

Thirteenth Session of the Orange River Conference

Held at Bloemfontein, May 2 to 8, 1927

Throughout the Session

THE new church was the meeting place throughout the session, and from the morning of the 3rd, when the full complement of delegates arrived in the city, the meetings were well attended, especially the devotional and preaching services.

There was enjoyment, appreciation and gratitude reflected in the facial expression and spoken testimony of the happy family, who had gathered to receive the good things provided by our local and visiting brethren, under the guidance of the Holy Spirit.

Our visiting ministers contributed greatly to the interest and success of the meetings by the encouraging reports which they brought, and also by their timely messages and earnest exhortations. While we could wish that it were possible to report a fuller and more complete representation of the various churches, we are glad to state that nearly every part of the field was represented.

One feature of the conference proceedings was that no more time than was essential was taken up with business meetings, and this very naturally resulted in more adequate provision being made for the spiritual requirements of the believers.

Elder J. I. Robison and Sister A. F. Tarr were in charge of the children's and young people's meetings, and these meetings were of a high and inspiring order, and were much appreciated by all.

The Sabbath school corner arranged by Sister Tarr attracted a great deal of attention, and much interest was evinced as representatives from the various parts of the field inspected the many devices displayed for stimulating interest in the needs of the mission fields, and to the giving to these objects.

S. J. STEVENSON.

Extracts From President's Report

WE welcome all the brethren and sisters to our annual meeting and thirteenth conference session, and pray for showers of blessings to fall upon us as together we shall seek the Lord, and that in all the business of the conference we might be guided by the Wonderful Counsellor.

OUR WORKERS

The Lord's special care has been over our workers in keeping all in good health. Elder Hiten, who for the previous year has been in a very low state, seems to be completely restored. During the five months of the president's absence to the General Conference, Brother Hiten took charge of his work, besides carrying on the work as pastor of the Kimberley church. Brother Venter, who was stationed at Taungs, held two tent efforts during the year, and had the privilege of seeing a goodly number baptised as the result of the work done by himself and our band of native workers in the Bechuanaland section. Brother and Sister Sharman, who have charge of the work at Emmanuel mission, report good progress in the work on that station. The school had a large attendance, and a baptismal class was conducted, and sixteen were baptised after the turn of the year.

VISITING THE ISOLATED

As has been mentioned in previous reports, two-thirds of the members in this conference live on farms, scattered over an area of 139,234 square miles, and find it impossible to meet together every Sabbath. The only way for a minister to get in touch with most of these members is to visit them on their farms. During the year 1926, as in previous years, we have endeav-

oured not to neglect our isolated members, but have visited them as much as possible.

EVANGELISTIC EFFORTS

Two tent efforts among the natives and one in Kimberley for the coloured people were held during the year with good results. Plans were laid to conduct a tent effort in Aliwal North, and a call was made for Pastor A. W. Staples to conduct the effort. Circumstances, however, did not allow us to start this work before the end of 1926. It might be mentioned that this effort has now been launched and good results are expected.

HARVEST INGATHERING AND BIG WEEK CAMPAIGNS

We are pleased to be able to report that good work has been done in these campaigns by our conference workers and many of our lay members. The territory has been more thoroughly worked than in previous years, and we reached more than the goals set. Our goal for Harvest Ingathering was £400, and £503-7-7 was received, or 103-7-7 above our goal. Big Week goal was £60, while £60-1-1 was raised.

DEPARTMENTAL WORK

Home Missionary Work.—Our Home Missionary workers have done faithful work in the campaigns that were launched during the year. Many papers and tracts have been scattered, and as a result, interests are springing up in different parts of the field. Letters have recently been received from people who have accepted the Truth as a result of reading literature placed in their hands, or sent through the post.

Let our church members remember the Lord has given to each his work, and expects us to be faithful. "We need to gird our armour afresh, and launch into the battle with every believer in line."

Sabbath School Work.—This very important phase of our work has been prospering under the able secretaryship of Sister A. F. Tarr, who has done faithful work.

Missionary Volunteer Work.—At the beginning of 1926 we had five organised Missionary Volunteer societies, with a membership of 107, but as most of our young people are living in rural districts, and do not find it possible to meet often, our society leaders have found it most difficult to keep up a good interest in their respective societies, but, notwithstanding all the difficulties in the way, our Missionary Volunteer society leaders have done much to help our young people. At times, when our quarterly services were held, splendid programmes were rendered by the Missionary Volunteers, which were indeed helpful to old and young.

Church Schools.—We cannot boast of many church schools for we have only one, and it has been a struggle to keep it going. This work should weigh much heavier upon our hearts than it has in the past. The Lord has given us much counsel regarding the establishment of church schools, where our children can receive an education that will fit them for the work of God.

Native Schools.—We had in operation eight native schools with an enrolment of approximately 350. These schools serve as an opening wedge for entering with our work. In all of these schools we make the teaching of the Bible the principal subject.

Colporteur Work.—More books were sold during the

year 1926 than during the previous year, as the following comparison will show:

| YEAR | EUROPEAN SALES | NATIVE SALES | TOTAL |
|------|----------------|--------------|-----------|
| 1925 | £1456 5 10 | 228 5 2 | 1684 11 0 |
| 1926 | 1556 9 5 | 154 11 8 | 1711 1 1 |

FINANCE

Tithe Receipts.—I am sorry to report that our records show a decrease in tithe receipts during 1926 of £326-17-7, as compared with 1925. There has been a loss in the operation of the conference largely due to this decrease in tithe.

Mission Offerings.—I am pleased to be able to say that there has been an increase in our mission offerings during the year.

| | | | |
|---|-------|----|---|
| Mission Offerings received during 1926, | £1420 | 9 | 3 |
| Mission Offerings received during 1925, | 1251 | 19 | 1 |

Increase £168 10 2

While in 1926 the amount received for mission offerings was larger than in 1925, the amount per member worked out the same. This is because of the fact that in 1926 we had to figure on a larger membership.

BAPTISMS

During 1926, there were added to our European membership 39 by baptism and 37 by transfers, a total of 76. Against this must be placed our losses by transfer, death and apostasy, which amounted to 58, thus giving us a net increase in membership of 18. Our present membership is 414.

To the native membership were added during the year 61 by baptism and 2 by vote, a total of 63; but the same number appears to have been dropped by death and apostasy, thus placing the number exactly the same as it was when we started the year, namely, 478. There were, however, 16 candidates baptised at Emmanuel mission shortly after the end of the year, which rightly should be credited to last year's work.

CONCLUSION

In closing this report, I would say that we are profoundly grateful to our Heavenly Father for the love and tender care which, notwithstanding all our mistakes and short-comings, He has graciously bestowed upon us. We are also thankful to our small band of workers and many of our lay members for the willing and faithful service they rendered in the various campaigns and other activities that were carried on in the conference during the past year.

J. N. DE BEER.



Election of Officers for the Ensuing Term

- CONFERENCE PRESIDENT, J. J. Birkenstock.
 CONFERENCE SECRETARY-TREASURER, To be appointed.
 BOOK DEPOSITORY SECRETARY-TREASURER, To be appointed.
 FIELD MISSIONARY SECRETARY, S. J. Fourie.
 HOME MISSIONARY SECRETARY, J. J. Birkenstock.
 Y. P. MISSIONARY VOLUNTEER SECRETARY, MRS. A. F. TARR.
 SABBATH SCHOOL SECRETARY, MRS. A. F. TARR.
 EDUCATIONAL SECRETARY, Union Educational secretary asked to carry local work.
 EXECUTIVE COMMITTEE, J. J. Birkenstock, Dr. J. J. Bell, G. W. S. Marais, T. J. J. van Rensburg, P. A. Venter, Jr., A. W. Staples, A representative of the Kimberley district, to be chosen by the S. A. U. Conference executive committee.

Plans and Resolutions

EXPRESSION OF GRATITUDE

WHEREAS, The Lord has greatly blessed our conference during the past year in protecting the homes and lives of our people, and in prospering our soul-winning endeavours, therefore

Resolved, That we humbly express our sincere appreciation of all these evidences of His love, especially as we realise that He has not dealt with us according to our just deserts, but according to His loving kindness, and that we re-dedicate our lives and all that we possess to His cause, and by God's help, determine to more fully meet His will during the coming year in the proclamation of this Message to a world in darkness and sin.

EDUCATIONAL DEPARTMENT

WHEREAS, The Lord has preserved to us a precious heritage in our children, and

WHEREAS, The proper education of the children and youth is of supreme importance to them and to our work, and

WHEREAS, The servant of the Lord has told us that, "As a church, as individuals, if we would stand clear in the judgment, we must make more liberal efforts for the training of our young people, that they may be better fitted for the various branches of the great work committed to our hands,"

Resolved, That we support every means provided for the proper education of our children and youth by training them, as far as possible, in our church schools and training school, and that we do all in our power to foster the principles of Christian education.

TITHES AND OFFERINGS

WHEREAS, The tithe is clearly declared to be sacred unto the Lord, and

WHEREAS, The promise of the Lord to His people for the outpouring of His blessing until there shall not be room enough to receive it, is made only to those who have brought in all the tithes and offerings, therefore

We recommend, That we here in conference assembled re-dedicate ourselves to the payment of a faithful tithe and the giving of more liberal offerings to missions. Further

We recommend, That all our members be urged to faithfulness in the payment of their tithes and offerings, that the way may be cleared for the outpouring of the special blessing of the Lord upon His people.

HOME MISSIONARY DEPARTMENT

WHEREAS, The church of Christ on earth was organised for missionary purposes, and the Lord desires to see the entire church devising ways and means whereby high and low, rich and poor, may hear the message of truth, and

WHEREAS, If every church member in our denomination were a living missionary, the message for this time would speedily be proclaimed in all countries, to every nation and tongue, and

WHEREAS, The soul-winning success by the mighty arm of active church members around the world, demonstrates the effectiveness of the divine plan, therefore

We recommend, That every believer be urged to respond to the call to consecration of life and service to the finishing of the work; that every worker give careful study to the best methods of enlisting and training the laity for soul-winning work.

PUBLISHING DEPARTMENT

WHEREAS, Great blessing has come to our evangelistic colporteur work in recent years as we have especially emphasised its evangelical and soul-saving nature, and

WHEREAS, It has in a marked degree resulted in a greater harvest of souls, therefore

We recommend, That both our office and field leaders continue especially to emphasise the evangelical nature of our colporteur work, and that we ever keep in view that this is a soul-saving and not a commercial work,

Further, that all of our lay members be urged to co-operate in this soul-saving work by encouraging the colporteurs in every way possible.

EXPRESSION OF CONDOLENCE

WHEREAS, Since the time of our last meeting together, the hand of death has removed from among us certain of our number, and has brought sorrow into the homes of our people,

Resolved, That we express our sympathy with the family of Brother Cloete in the loss of their aged father; with Brother and Sister Dale in the loss of their baby; and with the families of Brother Jackson and Sister Adamson, of Kimberley.

Orange River Conference

Report of Tithe and Mission Offerings for Quarter Ending 31st March, 1927

| NAME OF CHURCH | TITHE | MISS. OFF. RECEIVED | MISS. OFF. GOAL | % RAISED |
|----------------|-----------|---------------------|-----------------|----------|
| Kimberley | 83 5 3 | 29 11 8 | 92 12 6 | 32% |
| Bloemfontein | 257 11 10 | 26 14 4 | 78 0 0 | 34% |
| Taungs | 26 17 8 | 5 12 6 | 29 5 0 | 19% |
| Boschberg | 195 5 10 | 96 0 0 | 68 5 0 | 141% |
| Bolivia | 58 5 5 | 12 15 8 | 69 17 6 | 18% |
| Beaconsfield | 20 1 0 | 16 4 5 | 48 15 0 | 33% |
| Conference | 165 9 10 | 37 15 2 | 232 7 6 | 16% |
| Die Berg | 1 6 0 | | 24 7 6 | |
| Totals | £808 2 10 | 224 13 9 | 643 10 0 | 35% |

CORRESPONDING QUARTER 1926

| | | | | |
|--------|----------|----------|----------|-----|
| Totals | £636 0 3 | 255 16 1 | 568 15 0 | 53% |
|--------|----------|----------|----------|-----|

T. L. BULGIN.

SPION KOP COLLEGE

E. D. DICK, *Principal*

Private Bag, Ladysmith, Natal.

News Notes

DOCTOR HANKINS, of Durban, spent Sunday, May 1, in a medical examination of the students.

BROTHER HANSON, of the History Department, left on May 1 to represent the school at the Bloemfontein and Johannesburg meetings.

SISTER BROWNE, of Fort Beaufort, arrived on April 27 to visit her daughters, Violet and Ivy, and son, James, for a few days.

FIVE of our students were baptised on Sabbath afternoon, April 23. These five were, Enid Tarr, John Cooks, James Browne, Violet and Ivy Browne. In striking contrast to this beautiful quiet rite, which was conducted on the small beach of the Tugela, there was in progress at the same time, and but a few hundred yards away, a heathen wedding festival. The two events afforded a striking object lesson of the power of the gospel of Christ.

THE following students received an average of over 80% at the end of the last quarter:

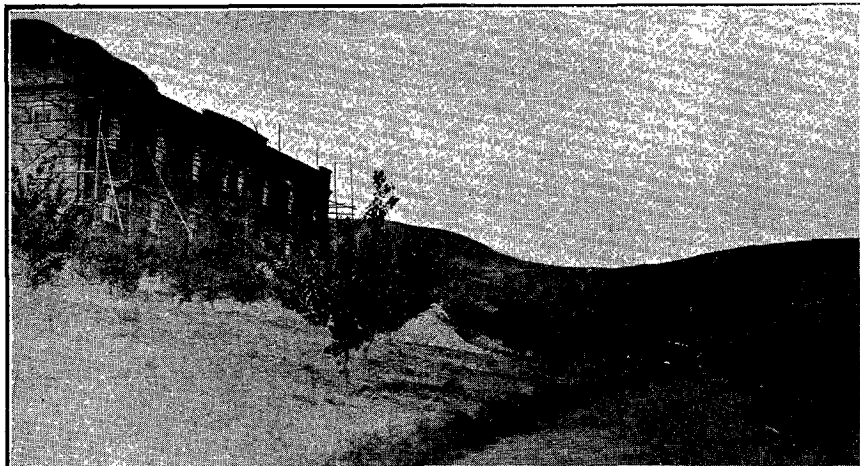
| | | | |
|-----------------|---------|-----------------|---------|
| Elaine Giddings | 88.9 % | Victor Norcott | 82.5 % |
| Henry Bell | 85.5 % | Beatrice Howard | 82.1 % |
| Ernest Marter | 84.77 % | George Hiten | 81.5 % |
| Stephen Hiten | 84.71 % | A. Lategan | 81.3 % |
| Miss P. Naude | 84.33 % | Jurie Moolman | 81.2 % |
| J. G. Siepman | 83.83 % | Enid Tarr | 80.66 % |
| Anna Steyn | 83.66 % | Rene Neiman | 80.33 % |

G. E. SHANKEL.



Used Magazines Wanted

THE Spion Kop church has a reading rack at the railway station in Ladysmith and the request is made for used copies of the *Signs of the Times*, *Youth's Instructor*, *Watchman Magazine*, *Little Friend*, or any such papers suitable for use in a reading rack. The *Review and Herald*, being our church paper, would not be such as should be placed in a public reading rack. Donations of these papers will be greatly appreciated by members of the Spion Kop church.



Progress at the New School Farm

I AM sure that all our believers throughout the African Division are watching with great interest the development of our new training college near Somerset West.

I am pleased to report that the work on the buildings is progressing very rapidly. The large drawing, shown on this page, illustrates how the plant will look when it is finished. The small picture is an actual photograph of one of the buildings as it was nearing completion. By the time this reaches our people, both of these dormitories will be completed on the outside and the finishing work will be going forward on the inside.

We find, however, that we will not have sufficient funds, by a considerable amount, to complete the inside of these buildings at the present time, and perhaps by the first of June work will have to be discontinued until later in the year when more funds come in for this purpose. We trust that any of our brethren who have pledged to the school, or who have funds that they would like to contribute toward this enterprise, will find it possible to send such gifts to their conference office in the near future, so as to assist us in completing these two buildings.

These buildings will be absolutely necessary if we are to open school in the new plant next February, which we wish to do by all means. Work should be resumed not later than November in

order that the buildings may be plastered on the inside, doors hung, the rooms ceiled, etc., so that our students coming to the school may be made as comfortable as possible.

For the first year or two, we will have to get on without the administration building, shown in the large drawing. But, since we have commodious basements in the two dormitories, we will be able to accommodate the school nicely in one of these, and the dining room, kitchen and laundry in the other, so that our students coming to the school should be quite comfortable from the very beginning.

So far, we have only two teachers' cottages erected, but we hope to be able to put up two more before

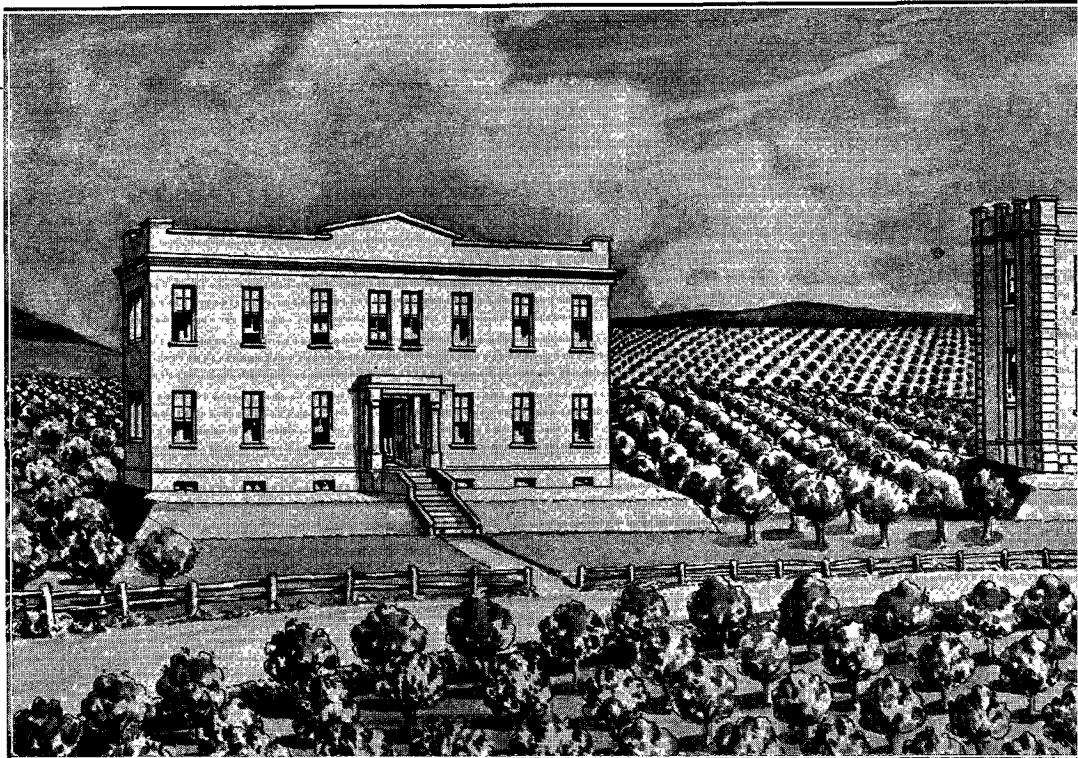
the time for school to open. Those who have visited this new school plant unite in declaring that the surroundings are most beautiful for an institution of this kind, and I am sure that our students will be most happy in this splendid environment.

No doubt, there are many young people who have been waiting for the new school to open its doors, and we trust that all such will definitely plan to join our student body when the school opens next February.

W. H. BRANSON.



“For the mind and the soul, as well as for the body, it is God’s law that strength is acquired by effort. It is exercise that develops. In harmony with this law, God has provided in His Word the means for mental and spiritual development.”—“Education,” page 123.



A Letter From Elder Bender

(Our readers will be interested to hear again from Elder Bender)

DEAR BROTHER COMMUN,

When we left Africa, I promised to write and let you know how we got on. I have surely taken plenty of time, for more than four months have passed since we sailed from Cape Town on November 12.

I must say that we often think of the kindness of the African brethren in helping us get started off in a good comfortable way.

Our voyage from Cape Town to Southampton ended on December 4. The events of this part of the trip were, a splendid sea, weather not too hot, and much better service and food than we had expected. Three days out from Cape Town, June developed chicken-pox. She and Mrs. Bender were put in the ship's hospital for ladies, and had it for two weeks all to themselves. On landing at Southampton, we were sent by train to London. Our brethren from the transportation office met us at Waterloo Station and made all arrangements for our stay-over until the 9th, when we were to leave for New York.

Our stay in London was a pleasure. Although the days were the shortest of the year, and the sun rose barely 20° above the southern horizon and could hardly be seen at noon because of the smoke and fog, yet we pushed about to see a few of the places of interest to us.

At the British Museum, I looked for the Rosetta Stone, and at Westminster Abbey the slab marking Livingstone's resting place. These are vitally connected with Africa.

At the Tower, we looked for the place where Lady Jane Grey was beheaded and the room where Sir Walter Raleigh spent so many years as a prisoner. There

are so many old things and places about that one must respect the English love of traditions and institutions.

Our brethren, wherever we met them, were very kind, and our transit through this part of England was a treat to us.

We sailed from Southampton on the "George Washington." A good sea with splendid weather was our experience across, and on the morning of December 18 we tied up at the Hoboken pier across the Hudson from New York. The letter to our transportation office in New York had not come through for some cause, and as no one met us we felt a bit lonesome at home. The next day, we located the office, and on Monday night took train for Chicago *via* Washington.

We stopped at Takoma Park over Christmas. More than thirteen years had passed since we were there, yet we met many old friends and made new ones.

Passing on through Chicago, we came to the home of Mrs. Bender's sister, at Nevada, Iowa. Here, her mother lives also, though now she is in California for the winter. On January 4, we came to my father's home in Firmont, Nebraska, thus completing the journey as allowed by our furlough.

We have found many new faces in old places. The work grows and increases in strength. The young people have grown older and many have gone out to other lands.

We note the great increase in the number of automobiles. Surely, "Neither is there any end of their chariots," fulfilled here. The other day, a brother was driving me from North to South Chicago. As we passed down the lake frontway, the cars became four ranks deep on either side going and coming. I said to myself, "Give me a span of oxen or donkeys on the veldt of Africa."

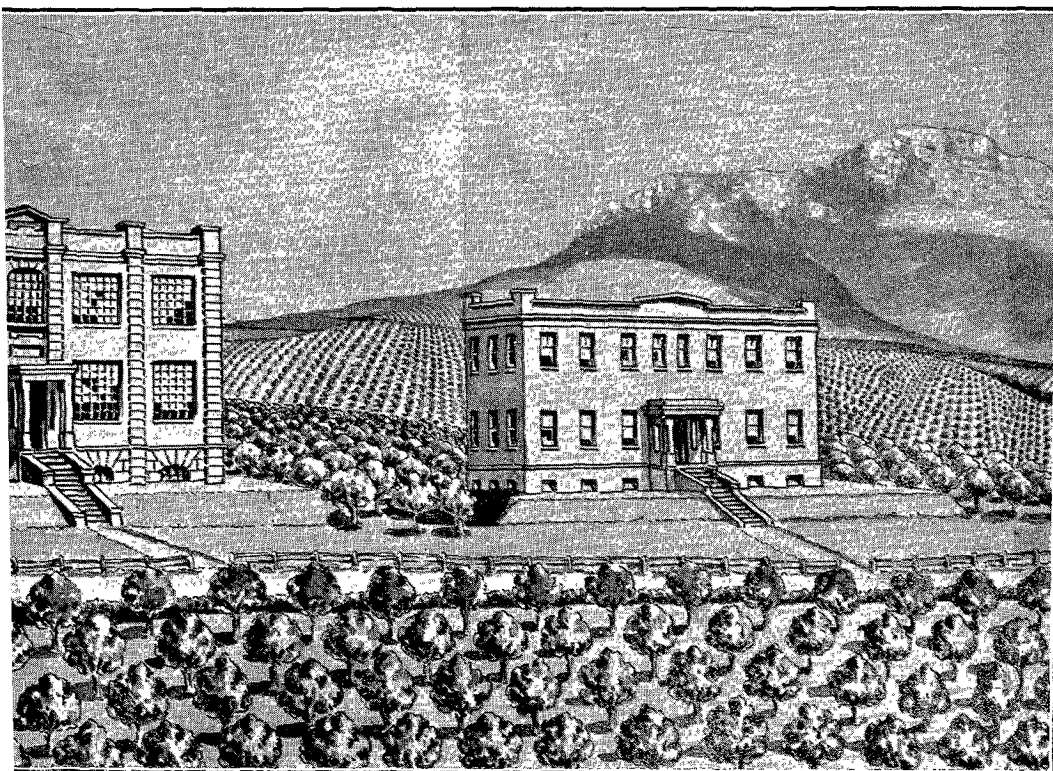
The winter has been very mild. The hardest thing to bear is the heat in the buildings.

Spring is almost here. The grass is beginning to show green and I see a number of robin red-breasts. Down South, the strawberries are ripe and are for sale on the Chicago market.

Mrs. Bender and June are at Nevada, Iowa, where June attends the church school. Thomas is in Nebraska at Fort Crook. I have been visiting a few places.

We send greetings to all over there, and believe this will find you well and of good courage. We pray for the success of the work in Africa.

Truly your brother,
U. BENDER.



STATISTICAL REPORT OF THE AFRICAN DIVISION

Tithe Receipts of the Unions, as Compared with Corresponding Quarter of Last Year

| NAME | AMT. FOR QUARTER | | | AMT. 1ST. QUARTER 1926 | | | REC'D. TO DATE THIS YEAR | | REC'D. SAME PERIOD | | PERIOD | | | | | | | | | | | | | |
|--------------------------|------------------|----------|----------|------------------------|-----------|-----------|--------------------------|-----------|--------------------|------------|-----------|-----------|-------------|----------|----------|------------|-----------|-----------|-------------|-----------|----------|------------|-----------|-----------|
| | WHITE | NATIVE | | WHITE | NATIVE | | WHITE | NATIVE | WHITE | NATIVE | | | | | | | | | | | | | | |
| S. A. Union Conference | 3576 | 9 | 2 | 231 | 7 | 8 | 2477 | 9 | 8 | 195 | 5 | 10 | 3576 | 9 | 2 | 231 | 7 | 8 | 2477 | 9 | 8 | 195 | 5 | 10 |
| Zambesi Union Mission | 236 | 18 | 8 | 93 | 0 | 5 | 255 | 7 | 10 | 70 | 11 | 6 | 236 | 18 | 8 | 93 | 0 | 5 | 255 | 7 | 10 | 70 | 11 | 6 |
| S. E. African Union Mis. | 28 | 10 | 4 | 25 | 0 | 1 | 63 | 19 | 6 | 29 | 17 | 10 | 28 | 10 | 4 | 25 | 0 | 1 | 63 | 19 | 6 | 29 | 17 | 10 |
| Congo Union Mission | 77 | 8 | 9 | 6 | 5 | 9 | 52 | 3 | 8 | 8 | 15 | 9 | 77 | 8 | 9 | 6 | 5 | 9 | 52 | 3 | 8 | 8 | 15 | 9 |
| Equatorial Union Mission | 34 | 18 | 4 | | | | 38 | 10 | 0 | | | | 34 | 18 | 4 | | | | 38 | 10 | 0 | | | |
| TOTALS | £3954 | 5 | 3 | 355 | 13 | 11 | 2887 | 10 | 8 | 304 | 10 | 11 | 3954 | 5 | 3 | 355 | 13 | 11 | 2887 | 10 | 8 | 304 | 10 | 11 |

Mission Offerings Receipts for the Unions

| NAME | REC'D. FOR QUARTER | | REC'D. TO DATE THIS YEAR | | SAME DATE LAST YEAR | | P/W PER MEMBER | | PERIOD | | | | | | | | | | | |
|--------------------------|--------------------|----------|--------------------------|------------|---------------------|-----------|----------------|----------|----------|------------|----------|-----------|-------------|-----------|----------|------------|----------|-----------|------------|------------|
| | WHITE | NATIVE | WHITE | NATIVE | WHITE | NATIVE | WHITE | NATIVE | | | | | | | | | | | | |
| S. A. Union Conference | 1294 | 4 | 0 | 86 | 0 | 4 | 1294 | 4 | 0 | 86 | 0 | 4 | 1163 | 4 | 0 | 74 | 2 | 5 | 1/3 | 1½d. |
| Zambesi Union Mission | 148 | 3 | 3 | 72 | 14 | 10 | 148 | 3 | 3 | 72 | 14 | 10 | 122 | 19 | 3 | 51 | 7 | 9 | 6/10 | ½d. |
| S. E. African Union Mis. | 11 | 3 | 8 | 35 | 12 | 4 | 11 | 3 | 8 | 35 | 12 | 4 | 28 | 1 | 2 | 39 | 0 | 9 | 2/5½ | ½d. |
| Congo Union Mission | 22 | 13 | 4 | 6 | 13 | 5 | 22 | 13 | 4 | 6 | 13 | 5 | 15 | 14 | 11 | 6 | 13 | 11 | 3/10½ | 1½d. |
| Equatorial Union Mission | 9 | 3 | 5 | | | | 9 | 3 | 5 | | | | 25 | 18 | 0 | | | | 10d. | |
| TOTALS | £1485 | 7 | 8 | 201 | 0 | 11 | 1485 | 7 | 8 | 201 | 0 | 11 | 1355 | 17 | 4 | 171 | 4 | 10 | 1/5 | ¾d. |

Tithe Receipts of Local Organisations as Compared with Corresponding Quarter of Last Year

| NAME | AMT. FOR QUARTER | | | AMT. 1ST. QUARTER 1926 | | | REC'D. TO DATE THIS YEAR | | REC'D. SAME PERIOD | | PERIOD | | | | | | | | | | | | | | | |
|---------------------------|------------------|----------|----------|------------------------|-----------|-----------|--------------------------|-----------|--------------------|------------|-----------|-----------|--------------|----------|----------|------------|-----------|-----------|-------------|-----------|----------|------------|-----------|-----------|--|--|
| | WHITE | NATIVE | | WHITE | NATIVE | | WHITE | NATIVE | WHITE | NATIVE | | | | | | | | | | | | | | | | |
| Cape Conference | 886 | 19 | 5 | | | | 886 | 19 | 5 | | | | 886 | 19 | 5 | | | | | | | | | | | |
| Cape Conf. (Coloured) | | | | 127 | 12 | 0 | | | | | | | | | | 127 | 12 | 0 | | | | | | | | |
| Natal-Tvl. Conference | 1775 | 17 | 4 | | | | 1775 | 17 | 4 | | | | 1775 | 17 | 4 | | | | 1108 | 17 | 3 | | | | | |
| Orange River Conference | 808 | 2 | 10 | | | | 808 | 2 | 10 | | | | 808 | 2 | 10 | | | | 636 | 0 | 3 | | | | | |
| Tvl.-Delagoa Miss. Field | 36 | 6 | 9 | 43 | 19 | 4 | 36 | 6 | 9 | 43 | 19 | 4 | 36 | 6 | 9 | 43 | 19 | 4 | 16 | 12 | 8 | | | | | |
| Kafirland Miss. Field | 33 | 6 | 0 | 32 | 3 | 1 | 33 | 6 | 0 | 32 | 3 | 1 | 33 | 6 | 0 | 32 | 3 | 1 | | | | | | | | |
| Basuto-Bechuana Miss. F. | 35 | 16 | 10 | 27 | 13 | 3 | 35 | 16 | 10 | 27 | 13 | 3 | 35 | 16 | 10 | 27 | 13 | 3 | | | | | | | | |
| S. Rhodesia Miss. Field | 123 | 6 | 1 | 69 | 18 | 0 | 123 | 6 | 1 | 69 | 18 | 0 | 123 | 6 | 1 | 69 | 18 | 0 | 135 | 4 | 6 | | | | | |
| N. Rhodesia Miss. Field | 63 | 0 | 6 | 17 | 18 | 6 | 63 | 0 | 6 | 17 | 18 | 6 | 63 | 0 | 6 | 17 | 18 | 6 | 70 | 2 | 2 | | | | | |
| N.-E. Rhodesia Mis. Field | 2 | 12 | 10 | 1 | 4 | 5 | 2 | 12 | 10 | 1 | 4 | 5 | 2 | 12 | 10 | 1 | 4 | 5 | 9 | 3 | 11 | | | | | |
| Bechuanaland Miss. Field | 47 | 19 | 3 | 3 | 19 | 6 | 47 | 19 | 3 | 3 | 19 | 6 | 47 | 19 | 3 | 3 | 19 | 6 | 40 | 17 | 3 | | | | | |
| Highlands Mission Field | 20 | 18 | 0 | 9 | 15 | 5 | 20 | 18 | 0 | 9 | 15 | 5 | 20 | 18 | 0 | 9 | 15 | 5 | | | | | | | | |
| Thekerani Mission Field | | | | 5 | 1 | 7 | | | | 63 | 19 | 6 | | | | 5 | 1 | 7 | 63 | 19 | 6 | | | | | |
| Matandani Mission Field | 7 | 12 | 4 | 10 | 3 | 1 | 7 | 12 | 4 | 10 | 3 | 1 | 7 | 12 | 4 | 10 | 3 | 1 | | | | | | | | |
| South Congo Miss. Field | 44 | 4 | 8 | 4 | 5 | 8 | 44 | 4 | 8 | 4 | 5 | 8 | 44 | 4 | 8 | 4 | 5 | 8 | 36 | 1 | 5 | | | | | |
| Lomami-Kasi Miss. Field | 24 | 15 | 0 | 1 | 7 | 6 | 24 | 15 | 0 | 1 | 7 | 6 | 24 | 15 | 0 | 1 | 7 | 6 | 8 | 3 | 7 | | | | | |
| Tanganyika Miss. Field | 8 | 9 | 1 | 12 | 7 | | 8 | 9 | 1 | 12 | 7 | | 8 | 9 | 1 | 12 | 7 | | 7 | 18 | 8 | | | | | |
| Bongo Mission | 34 | 18 | 4 | | | | 34 | 18 | 4 | | | | 34 | 18 | 4 | | | | 31 | 4 | 0 | | | | | |
| Luz Mission | | | | | | | | | | 7 | 6 | 0 | | | | 7 | 6 | 0 | | | | | | | | |
| TOTALS | £3954 | 5 | 3 | 355 | 13 | 11 | 2887 | 10 | 8 | 304 | 10 | 11 | £3954 | 5 | 3 | 355 | 13 | 11 | 2887 | 10 | 8 | 304 | 10 | 11 | | |

MISSION OFFERINGS RECEIPTS FOR THE LOCAL ORGANISATIONS

| NAME | REC'D. FOR QUARTER | | REC'D. TO DATE | | THIS YEAR | | SAME DATE LAST YEAR | | P/W PER MEMBER TO DATE | | | | | |
|-----------------------|--------------------|------------|----------------|-------------|-------------|------------|---------------------|-------------|------------------------|-------------|------------|-------------|------------|------------|
| | WHITE | NATIVE | WHITE | NATIVE | WHITE | NATIVE | WHITE | NATIVE | WHITE | NATIVE | | | | |
| Conference | 347 | 19 8 | 347 | 19 8 | | | 401 | 12 0 | | 11½d. | | | | |
| Conf. (Coloured) | | | | | 32 | 12 5 | | | 22 | 18 2 | 5d. | | | |
| al-Tvl. Conference | 683 | 0 0 | 683 | 0 0 | | | 505 | 15 11 | | 1/9½ | | | | |
| ange River Conference | 224 | 13 9 | 224 | 13 9 | | | 255 | 16 1 | | 10½d. | | | | |
| Delagoa Miss. Field | 8 | 3 3 | 8 | 3 3 | 29 | 16 5 | | | 24 | 2 8 | 4/2 | | | |
| erland Mission Field | 8 | 19 10 | 8 | 19 10 | 13 | 17 3 | | | 11 | 5 8 | 2/8 | | | |
| uto-Bechuana Miss. F. | 21 | 7 6 | 21 | 7 6 | 9 | 14 3 | | | 15 | 15 11 | 4/8 | | | |
| Rhodesia Miss. Field | 92 | 17 1 | 92 | 17 1 | 46 | 0 5 | 76 | 8 7 | 40 | 12 1 | 4/4 | | | |
| Rhodesia Miss. Field | 30 | 6 2 | 30 | 6 2 | 10 | 11 6 | | | 8 | 2 0 | 3/4 | | | |
| . Rhodesia Mis. Field | 2 | 10 0 | 2 | 10 0 | 2 | 2 2 | 2 | 0 0 | 1 | 11 11 | 3/10 | | | |
| uanaland Miss. Field | 22 | 10 0 | 22 | 10 0 | 14 | 0 9 | 42 | 8 8 | 6 | 3 9 | 11/6 | | | |
| hlands Mission Field | 5 | 3 8 | 5 | 3 8 | 16 | 15 2 | | | | | 1/2 | | | |
| kerani Mission Field | | | | | 13 | 17 5 | 28 | 1 2 | 39 | 0 9 | ½d. | | | |
| andani Mission Field | 6 | 0 0 | 6 | 0 0 | 4 | 19 9 | | | | | 4/6 | | | |
| h Congo Miss. Field | 11 | 17 3 | 11 | 17 3 | 4 | 19 5 | 7 | 3 9 | 5 | 1 8 | 3/5 | | | |
| ami-Kasi Miss. Field | 6 | 7 9 | 6 | 7 9 | 1 | 1 3 | 4 | 14 2 | 16 | 10 | 4/10 | | | |
| anyika Mission Field | 4 | 8 4 | 4 | 8 4 | 12 | 9 | 3 | 17 0 | 15 | 5 | 3/5 | | | |
| go Mission | 5 | 0 0 | 5 | 0 0 | | | 22 | 0 0 | | | 1/4 | | | |
| Mission | 4 | 3 5 | 4 | 3 5 | | | 3 | 18 0 | | | 3/2 | | | |
| TOTALS | £1485 | 7 8 | 201 | 0 11 | 1485 | 7 8 | 201 | 0 11 | 1355 | 17 4 | 171 | 4 10 | 1/5 | ¾d. |

Membership etc., of Union Organisations at Close of Quarter

| | AFRICAN DIVISION | | S. A. UNION | | ZAMBESI UNION | | S. E. AF. UNION | | CONGO UNION | | EQUATORIAL UNION | |
|------------------------------|------------------|--------|-------------|---------|---------------|--------|-----------------|---------|-------------|--------|------------------|--------|
| | WHITE | NATIVE | WHITE | NATIVE | WHITE | NATIVE | WHITE | NATIVE | WHITE | NATIVE | WHITE | NATIVE |
| Ordained ministers | 39 | 12 | 18 | 6 | 6 | 5 | 1 | | 3 | | 1 | 2 |
| Licensed ministers | 26 | 20 | 10 | 16 | 8 | 1 | 3 | 3 | 4 | | | 1 |
| Licensed missionaries | 36 | | 11 | | 8 | | 2 | | 2 | | | 3 |
| Evangelists, teachers | | 323 | | 35 | | 164 | | 104 | | 16 | | 4 |
| Colporteurs | 18 | 18 | 18 | 16 | | 2 | | | | | | |
| Other workers | 49 | 28 | 7 | 2 | 19 | 24 | 3 | | 1 | 1 | 2 | |
| Total all workers | 131 | 400 | 64 | 75 | 40 | 196 | 9 | 107 | 10 | 18 | 8 | 4 |
| No. of Sabbath schools | 52 | 267 | 48 | 69 | 1 | 122 | | 60 | | 13 | 3 | 3 |
| Membership " " | 1937 | 13832 | 1830 | 1393 | 53 | 6469 | | 5024 | | 752 | 14 | 194 |
| Students at Spion Kop | 72 | | 66 | | 3 | | | | 1 | | 2 | |
| No. of church schools | 4 | | 4 | | | | | | | | | |
| Enrolment " " | 73 | | 73 | | | | | | | | | |
| Students in training schools | | 502 | | 46 | | 247 | | 168 | | 41 | | |
| Students in mission schools | | 1301 | | 215 | | 476 | | 390 | | 90 | | 130 |
| No. of out-schools | | 200 | | 16 | | 115 | | 57 | | 12 | | |
| Enrolment " " | | 9424 | | 557 | | 4182 | | 4353 | | 332 | | |
| No. of church organisations | 37 | 68 | 33 | 44 | 3 | 16 | | 3 | | 3 | 1 | 2 |
| Membership Dec. 31, 1925 | 1580 | 5306 | 1531 | 1332 | 33 | 2226 | | 1644 | | 91 | 16 | 13 |
| Membership end last quarter | 1697 | 6063 | 1634 | 1404 | 47 | 2547 | | 1973 | | 127 | 16 | 12 |
| Added by baptism | 44 | 120 | 44 | 28 | | 25 | | 13 | | 38 | | 16 |
| Added by vote | 16 | 8 | 14 | | | 4 | | | | 4 | 2 | |
| Total gain during quarter | 60 | 128 | 58 | 28 | | 28 | | 13 | | 42 | 2 | 16 |
| Dropped by apostasy | 9 | 92 | 9 | 52 | | 4 | | 36 | | | | |
| Transferred by letter | 34 | 6 | 30 | | | 1 | | | | 5 | 4 | |
| Dropped by death | 2 | 13 | 2 | 1 | | | | 12 | | | | |
| Left gain in members | 15 | 17 | 17 | 25 loss | | 24 | | 35 loss | | 37 | 2 loss | 16 |
| Present membership | 1712 | 6080 | 1651 | 1379 | 47 | 2571 | | 1938 | | 164 | 14 | 28 |
| Total to close of year | 1799 | 6957 | 1799 | 1539 | | 3006 | | 2200 | | 212 | | |
| Probationers' class | | 1558 | | 118 | | 635 | | 753 | | 19 | | 33 |
| Teachers' class | | 3735 | | 52 | | 1623 | | 1852 | | 165 | | 43 |
| Total keeping Sabbath | 1712 | 11373 | 1651 | 1549 | 47 | 4829 | | 4543 | | 348 | 14 | 104 |

THE AFRICAN DIVISION OUTLOOK

Published semi-monthly by the

General Conference of Seventh-day Adventists, African Division

Subscription price, five shillings

W. B. COMMIN, Editor
 MISS P. E. WILLMORE, Asst. Editor
 Grove Avenue, Claremont, Cape

SOUTH EAST AFRICAN UNION

G. A. ELLINGWORTH, *Supt.* MRS. G. A. ELLINGWORTH, *Secy.-Treas.*
 ADDRESS: *Malamulo Mission, Blantyre, Nyasaland*

Notes

BROTHER AND SISTER WEBSTER lately spent a few days in Blantyre.

BROTHER PEARSON and family are now settled at Malamulo mission, after their furlough in Durban.

THE South-East African Union Mission's headquarters are now located just out of Blantyre. The new address is P. O. Box 51, Blantyre, Nyasaland.

WILL our friends please remember that all letters for Nyasaland, whether open or closed, should carry a twopenny stamp for the first ounce?

WE are very glad to learn that help is on the way to this field. Dr. Marcus and Brother Grisham, with their families, will be out in time for the Division Council which they will attend on the way up.

THIS has been a very wet season. Many miles of railway are rendered useless owing to the destruction of bridges and permanent way, and mails and passengers have to travel by river steamer from Murraca to Chiromo. It is reported that over fifty lives have been lost in the flooded areas. Two of our village schools have been blown down by the storms and in five other villages the schools are flooded so that teachers and people have sought refuge on the high ground. From Thekerani mission, the plains look like a huge lake.

G. A. ELLINGWORTH.

General News Notes

MISS P. ANSLEY, of Kimberley, has connected with the Division office.

THE R. M. S. "Balmoral Castle" brought to our shores on the 9th inst., six families who arrived just in time to attend the Division Council at Johannesburg before proceeding to their fields of labour.

DR. STURGES and family, immediately following the Council at Johannesburg, will proceed to the Congo, and we can assure the doctor of many opportunities to labour for the Master in that needy field.

DR. MARCUS and Brother Grisham are proceeding to Nyasaland, and will be a great help to the workers in that field, who, on account of illness, have been much handicapped of late.

DR. ERICKSON, who will take charge of the medical work in Kanye, proceeded to Lobatsi on the same day that he arrived. The doctor will visit a few days with Dr. Kretchmar to become acquainted with the hospital before attending the Division Council at Johannesburg.

WE welcome the return of Brother and Sister R. P. Robinson and family, and Brother and Sister Jewel and son, who have been away on furlough for several months. We are glad to find these workers enjoying such good health again.

ELDERS ANDERSON AND FRENCH cable from the French Cameroons that they have been successful in selecting five suitable mission sites.

REPORT from the African Missionary College advises that the almonds were of even better quality this year than last. The hard and soft shell nuts weighed a little over three tons. The crop has all been sold.

IN a letter written by Brother Potter, of the Natal-Transvaal Conference, to Brother Blennerhassett, he tells of an encouraging experience had while canvassing. Our prayers are with our canvassers as they go from door to door, bearing the message of truth to the people.



As In the Days of the Early Church

WE quote the following from a letter just received from Elder Kotz, of the General Conference office: "The other day, we received the following cable from China: 'All safe. College closed.' So we are thankful that the Lord has protected our brethren there so far.

"Here is an experience that came to me from Hungary the other day, and which you may find of interest: 'Some time ago, a family in Hungary accepted the Truth. One member of the family is a girl seventeen years of age, who was lame since the day of her birth. While we were studying the Sabbath school lessons in Acts all over the world, our brethren and sisters in Hungary also had the same studies, and so this little girl happened to read with us the report of the lame man healed at the gate Beautiful. It seemed to her that the Lord Jesus was standing by telling her, "I could do the same thing for you today if you could only believe." She did believe, and asked her sister to lift her out of the chair which she had been keeping all the time of her life, and lo and behold, she was able to walk and is still walking today, praising the Lord for His kindness.' This is the Acts of the Apostles in the twentieth century. Certainly, Jesus Christ is the same today as He was yesterday."

It takes the same faith to work miracles today as in the days of the early church.