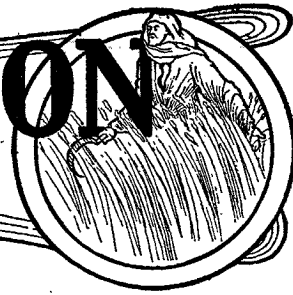




# SOUTHERN UNION WORKER



**"My meat is to do the will of Him that sent me, and to finish His work."**

## President's Annual Address

*To the delegates assembled in the fifteenth annual session of the Seventh-day Adventists, Greeting:*

ANOTHER year has passed, and again we are permitted to assemble and enjoy special blessings from heaven, and also to counsel how best to advance the light of truth in Mississippi.

The year just passed is one of the most eminent years in modern history. No historian has ever recorded such events as have occurred during the last half of 1914 and thus far in 1915. Little did we think of the momentous affairs set in motion when we sat in a like meeting last year about this time.

The great masses in the world are wholly blind to the signs of the times. In the struggle among the nations, many can see only commercialism; but the man of God, who sees the fulfilment of prophecy, is stirred and moved at the gravity and solemnity of these unusual days. Truly "nations are angry," and "nations are perplexed," and "the earth is full of violence." Man's heart is failing him for fear because of these unusual conditions now prevailing upon the earth. Few are they who know the deep undercurrent of evil working in every nation and among all people. The great enemy of truth is directing the affairs of this world for the closing events of its history, and "surely darkness covers the earth, and gross darkness the people."

This condition of the old earth affects every nook and corner. The inhabitants of all the earth will not escape the effects of this stupendous conflict; therefore Mississippi cannot be exempt.

The pressing conditions increase the burdens of daily care, the tremendous struggle for existence chokes the good seed, and the people are robbed of their spiritual experience. As the Spirit of God leaves the inhabitants of earth, the work becomes more and more difficult, until it is well nigh impossible to serve God unmolested. But be of good courage. It is then when the great God, the Lord, will provide us a new home, where we may gather from one Sabbath to another, worshipping the great King. However, before the song of victory will fill our hearts, before our heads will be crowned with a crown of glory, a very definite work must be accomplished. There is a world to be saved, and it falls upon the Seventh-day Adventists to announce to every nation and to all peoples the mes-

sage of the coming of our King and the setting up of his kingdom.

### HOME MISSIONARY WORK

There is no more effective method of discharging this responsibility than by home missionary work. This is a method of service that enlists the efforts of every member associated with this great advent movement. To fulfil the purpose of God, every church must be a working church. Every church-member who has a knowledge of the truth is expected to work while the day lasts. God expects personal service from every one: "Why stand ye here all the day idle?" is the query of the Lord. "Has no man hired thee? Come work in my vineyard and whatsoever is right I will pay thee." This is the invitation to every man and woman among our ranks.

The home missionary work is a wonderful asset to our ministerial force of workers

in winning souls, and a powerful means in the hand of God for enlightening the inhabitants of this earth, announcing to them its destruction and also the way of escape.

Much has been done in awakening the working faculties among our people since this definite missionary endeavor has been launched. The reports show a great work being done in distributing tracts and lending books, writing missionary letters, doing Christian help work, etc. May the missionary zeal, kindled in the hearts of the believers, increase until the whole State of Mississippi is filled with the doctrine of the third angel's message. Let your churches which may be still unorganized, organize into home missionary societies. Let them take a club of the *Signs of the Times* and the Present Truth Series and work the town and vicinity systematically from house to house, month after month. The result of this kind of work will be astonishing.

### THE COLPORTEUR WORK

This line of work is not as encouraging this year as we would like to have it. We all feel more or less the financial depression that has swept the country the past year. However, no one realized this condition so keenly and felt the depression so deeply as the colporteur going from house to house selling the printed page. Men will have money for every sort of pleasure, and strain every nerve to appear well in public, but to sell all they have that they may buy the "pearl of great

## Mississippi Conference

### Conference Directory

C. S. WIEST, President.  
 BEN C. MARSHALL, Secretary and Treasurer.  
 BEN C. MARSHALL, Tract Society Secretary.  
 VIRGIL SMITH, Field Missionary Agent.  
 JAMES A. MORROW, Religious Liberty Secretary.  
 MRS. E. L. MORROW, Sabbath School Secretary, 116 Short Bay St., Hattiesburg, Miss.  
 OFFICE ADDRESS, 932 Union St., Jackson, Miss.

### Twenty-Cent-a-Week Fund

Membership	Quota to Date	Amount Paid	Amount Short
311	\$1,362.00	\$846.00	\$516.00

### Sunset Calendar

Friday, Sept. 10, sun sets ..... 6:13

price" is difficult for them to do. Few see the great value and pleasures which these heaven-sent books contain, that will induce them to sell part of their possessions that they might buy that which will bring them riches untold. To the colporteur must be given divine persuasion if he is a success in these trying times. To the workers in this line, let me say, yield not to the temptation that may come to you to discontinue this noble service. You are performing an active part in restoring the waste places of Jerusalem. Remember the words of Nehemiah when tempted to stop his important work of rebuilding the temple, "I am doing a great work so that I cannot come down." It is possible to become so busy that we have no time to become discouraged. Therefore strengthen the feeble knees by the oil of determination and sincere consecration.

For a number of years, we, as a people, have been preaching the conditions now upon us. The hard times, the great war, and this general dissatisfied condition, were no surprise to the Seventh-day Adventists. Therefore, let us take courage, knowing that our position in explaining the prophecies is correct. The year 1915 is the greatest witness to every one of us that Jesus is coming again.

#### TITHES AND OFFERINGS

THIS is a most important feature in finishing the work of God on the earth. The one who pays a faithful and honest tithe and is liberal in offerings produces tangible evidence of his faith and confidence in the third angel's message. By his financial aid he helps to hasten the coming of Christ.

One who fails to pay tithe and has no sacrifice to make in offerings, will, so far as he is concerned, stop the advancement of this great truth.

The tithe for the last year shows a marked decrease. For 1913 we received on this fund the sum of \$2,777.49 and for 1914 only \$2,600.99.

We excuse ourselves more or less because of the financial depression, but may it not be that in some cases the Lord's money was used for things pertaining to the home and for the body? The temptation to rob God of his portion is greater during a domestic crisis than when the pantry is full of the necessities of life. But brethren, we must be faithful under the most trying and powerful depression. It takes all that we have to go into the kingdom.

However, it is evident from the figures when compared with the last three years, that the war had somewhat to do with this decrease in tithe. Notice the following statistics:

Tithe for the first seven months of 1913	\$1215 14
" " " " " " " " 1914	1338 72
" " " " " " " " 1915	1463 37

Total offerings in 1913, \$1,971.04; 1914, \$1,498.57.

You will notice that the falling off in tithes of 1914 must have been the last five months of the year. You will further notice that in spite of war conditions, we made a gain the first seven months of 1915 over 1914 of \$124.65. This is very encouraging, for the heaviest tithe is usually paid in the fall of the year.

Offerings for the first seven months in 1913	\$ 944 05
" " " " " " " " 1914	831 28
" " " " " " " " 1915	587 23

The offerings in the conference show considerable decrease. But when we take into consideration the amount raised for the Jackson church building fund, we understand this decrease in our general offering.

Some measures should be introduced at this meeting to raise our portion of the twenty-cent-a-week fund. The amount short on this fund is \$275.00.

We dare not localize our efforts to the extent that we forget our duty beyond our borders. Let us remember that the only

way we receive help is by giving help. Liberality begets liberality.

#### THE YOUNG PEOPLE'S WORK

The young people's work is quite in its infancy, but we have made a beginning along this line. Sister R. E. Burke is now young people's secretary of the conference and mission and has met with some success in getting the young people to read the Bible through and to take the Standard of Attainment, etc. Sister Burke will organize this work more fully, and I am sure in a short time the young people of Mississippi will do even a greater work.

#### SABBATH SCHOOL OFFERING

I am very much interested in the Sabbath school offering when compared with the last two years. For 1913 you gave as Sabbath school offering the sum of \$634, in seven months, \$395.14; for 1914 you gave as Sabbath school offering the sum of \$1,040.66, in seven months, \$716.96.

Notice the splendid gain along this line. This shows a systematic giving by our people. The gain of 1914 over 1913 amounts to the sum of \$406.66. The gain for the seven months of 1915 over 1914 amounts to \$321.82. The hard times did not affect this offering. I would suggest to every church to set as your weekly goal, fifteen cents per member. Then work and pray until every member feels a burden in reaching this amount. In this way the twenty-cent-a-week fund will be easily raised.

#### EVANGELICAL WORK

The Lord has blessed in some degree the efforts of soul saving. Souls have been added to the Jackson, Meridian, Conference, Greenville, Brookhaven, Yazoo City, Vicksburg, and Quitman Churches. Last year Elder R. E. Burke conducted a stirring tent meeting in the city of Meridian; Elder J. A. Morrow labored in Hattiesburg and vicinity. After the camp-meeting last year Brother Morrow was asked to follow up the interest awakened in the city of Jackson. In this city, the president, assisted by Brother Balsbaugh and wife, conducted a tent effort. In all these efforts the Lord gave substantial fruit.

At the last session of the Southern Union Mission committee, we were favored by an action taken to have our Union evangelist, Elder Scott, conduct a strong tent effort in the city of Jackson. Brother Scott was hindered somewhat on account of the effort at Shreveport but we are glad for what our eyes see and ears hear. The interest awakened in this effort bespeaks great results. Already some are keeping the Sabbath.

In counsel with the brethren, it was decided to respond to the urgent request that came from Hattiesburg and conduct a tent effort at that place. It was unfortunate that on August 11, at midnight, the tent that was almost new was burned to ashes. Brethren King and Barnes who had charge of the effort were tenting near by, but were unable to save even the seats from being burned. It is evident that the hand of the enemy did this work, but remember, you can do nothing against the truth, but for the truth. Some have begun to keep the Sabbath, and by the reports from the brethren, the Lord will do a great work at Hattiesburg. The enemy is angry, and these workers need your prayers that the Lord will not withhold his Spirit in this great need. Can this work of soul saving and enlightening the world of the coming of Christ be stopped? Yea, all the demons in the whole universe are not sufficient to turn the great current of the third angel's message. It will flow into every corner of every nation on this old earth, and Satan cannot prevent it.

We are indeed sorry to lose one of our ministers. Elder J. A. Morrow received a call from the Louisiana Conference and has accepted the call, leaving Mississippi August 1, 1915. Sister Morrow has for the last few years occupied the position of Sabbath school secretary. We shall miss her faithful labors very materially along this line, but what is our loss is gain

to the Louisiana Conference. We wish these workers heaven's blessing.

#### AN EARNEST APPEAL

The conditions of these days extend to every Seventh-day Adventist a very definite call for help. There was a time when the world looked to the Jews for spiritual light, but today it must look to the Seventh-day Adventists. Brethren, can we say that we are doing what we can in the spread of this message? The Lord has placed a very solemn responsibility on every one of us. Let us not neglect to discharge this duty. I appeal for your most hearty support in doing your part to finish giving the third angel's message in Mississippi.

Remember, stagnation will bring decomposition and death. The time has come for our church-members to arise to activity for the finishing of the work of God on the earth. Let the everlasting gospel stir your energies and compel you to greater earnestness and more faithful endeavor in gathering souls for the harvest, for "When the fruit is brought forth, immediately he putteth in the sickle, because the harvest is come."

C. S. WIEST.

#### Colporteur Report

IN BRINGING to you my annual report, I am glad that the grim monster, Death, has not claimed any of our workers as his victim. Some have been sick with the pellagra, others with chills and fever, while others that were with us one year ago, have returned to Egypt and are carrying brick and mortar, and have become hewers of wood and drawers of water.

Last year we had an average working force of fourteen, while this year we have had an average of only ten. For the first six months of last year we took in 12,083 hours, 8,164 orders valued at \$20,368.75. We delivered \$3,468.55 worth of books and sold \$478.70 worth of magazines and \$36.65 worth of Bibles. Our book sales for the first six months of last year were \$430.75 greater than for all the first three years of our business. Our future prospects were the brightest of any time in the history of our work.

In the midst of our prosperity the crash came, and with such a paralyzing and stunning effect upon our work that it was almost impossible to deliver our orders. Five of our best workers left our ranks, leaving their books upon our hands while hundreds of dollars worth remained unsold which we have been unable to dispose of until now. Our suffering is best understood when I tell you that we were able to deliver only 31 per cent of the orders we took. It seemed at one time as though everything would be lost. However, our old tried workers stood nobly by the work, and as a result we were able to deliver \$8,875.55 worth of books and sold \$662.90 worth of magazines and \$105.55 worth of Bibles, making a grand total of \$9,643.99 worth of books and magazines. This is \$358.05 more than for the year 1913.

This year the work has gone slowly. As soon as we could after the first of the year, we rallied our forces and held two of the best institutes we have ever held in the State of Mississippi. We were very fortunate in getting Brother and Sister Haskell to be with us during the first one. Brother Davis was with us during both. The instruction given was timely and such as we shall never forget. Several new ones have entered the work and have done good service.

Having a smaller working force we worked only 8,127 hours and took 4,729 orders valued at \$13,194.75. We have delivered 1,086.30 worth of books and sold \$367.70 worth of magazines and \$32.90 worth of Bibles. This is \$2,382.25 less than for last year and \$1,370.35 less than for the year 1913.

You will readily see that we have fallen short in time and orders and value, but this can be accounted for largely by the decrease in the number of workers. Our deliveries so far this year have been poor, but this is due to books being delivered

when the orders were being taken. One person could attribute over one hundred dollars loss to this alone. Had our working forces remained the same right along we would have done even better than last year.

The greater part of our deliveries are in the future. Each worker realizes that a serious condition confronts him. But we have talked of, and looked for just such a time as this to come, and now that it is here we feel no disposition to give up or quit. On the other hand, there is a determination on the part of all to steer clear of debt and to hasten to completion this great work.

Each one feels that it is a part of his work and must be done. The task is great and so is the reward, but the laborers are few. Our daily prayers are that God will raise up men and women capable of enduring hardships to assist in carrying this last message of mercy to a perishing world. "Pray ye therefore the Lord of the harvest that he would send forth laborers into his harvest." The colporteur work is a noble work. It is here that the faithful and true are tested and tried. May the Lord help all here to see our responsibility, and knowing what the Lord would have us do, may we be given strength and grace to faithfully perform it.

VIRGIL SMITH.

#### Influence

INFLUENCE is like electricity. We can see its working and feel its effects; but it is difficult to define it — to say that it is this or that. In general, we recognize two kinds of influence, positive and negative. Perhaps an illustration of each kind will best explain these terms:

A teacher of slum children wished to help her pupils to overcome their habits of fighting, stealing, and swearing, learned in the poorer districts of the city. Each morning she read or told the boys and girls a story of some one who had been tempted to do something of that kind but who had not yielded to the temptation. The teacher always praised the overcomer, making him appear in the light of a hero. Soon her pupils began to leave off doing the bad things and began to do the things which she pictured to them as being heroic. This teacher exercised a positive influence over her pupils.

A young woman was tempted to go to a dance. Her young friends who were going were not Christians, but she was. Finally she yielded to her friends' entreaties and went. Had she remained true to her convictions, her influence would have been positive. As it was, Christianity was cheapened in her friends' estimation; hence her influence was negative.

Perhaps nothing can give an individual more real pleasure than the knowledge that his influence is positive on the side of right. It is possible, for instance, to be positive on the side of wrong. The boy who leads his companions to smoke cigarettes has a positive influence, but it is on the side of wrong. No one may be so sure that his influence is right as the Christian.

To know that one's influence is detrimental, and yet be too weak to correct the condition, is torture indeed. The poor soul in this condition needs Christ to strengthen and to succor him. Our business as Christians in this world is to find such persons, and to point them to the One whose influence draws all unto himself. Thus we work with Christ.

It is difficult for us to realize the value of influence. We leave impressions either for good or for bad upon every one whom we meet. After our contact with persons, they go their several ways, and we never know how our lives have influenced them. Our influence is so great that we may lead a soul to Christ or send him to perdition. If we spend our time leading souls to Christ, no one but God himself can place the true value upon our influence. — *B. B. Davis, in the Youth's Instructor.*

Financial and Statistical Reports

Conference Receipts, First Seven Months 1915

Churches	Mem	Tithe	Per Capita	Bldg Fund	Emergency	Total	Per Capita
Cedar Creek	22	\$ 38 90	\$ 1 76	\$	\$	\$ 38 90	\$ 1 76
Conference	20	290 55	14 52	196 77	250 00	737 32	36 86
Ellisville	16	45 81	2 86			45 81	2 86
Hattiesburg Company		49 02				49 02	
Jackson	45	547 35	12 16	154 05		701 40	15 59
Hatley	30	77 70	2 59			77 70	2 59
Meridian	24	241 51	10 06			241 51	10 06
Pine Grove	10	111 78	11 17			111 78	11 17
Vicksburg	6	22 19	3 70			22 19	3 70
<b>Totals</b>	<b>173</b>	<b>\$1460 33</b>	<b>\$ 8 44</b>	<b>\$ 350 82</b>	<b>\$ 250 00</b>	<b>\$2061 15</b>	<b>\$ 11 91</b>

TWENTY-CENT-A-WEEK FUND

Churches	Annual	Har Ing	Mid sum	Mission	Sab S Off	Total	Per Cap	Due	Short
Cedar Creek	\$	\$	\$	\$ 1 51	\$ 16 24	\$17 75	\$ 03	\$ 132 00	\$ 114 25
Conference		2 50	28 55		77 51	108 56	18	120 00	11 44
Ellisville	1 05				24 35	25 40	05	96 00	70 60
Hattiesburg Company					41 21	41 21			
Jackson	61		17 50	9 17	163 75	191 03	14	270 00	78 97
Hatley				2 94	12 64	15 58	02	180 00	164 42
Meridian		75	11 50	1 43	90 09	103 77	14	144 00	40 23
Pine Grove				1 70	16 45	18 15	06	60 00	41 85
Vicksburg			5 00		7 35	12 35	07	36 00	23 65
Individual			2 00	2 50	47 00	51 50			
<b>Totals</b>	<b>\$ 1 66</b>	<b>\$ 3 25</b>	<b>\$ 64 55</b>	<b>\$ 19 25</b>	<b>\$ 496 59</b>	<b>\$ 585 30</b>	<b>\$ 14</b>	<b>\$1038 00</b>	<b>\$ 545 41</b>

Tract Society Revenue Statement For Year Ending December 31, 1914

INCOME	
Gross Profit on M'dse Sales	\$ 1048 52
EXPENSE	
Canvassers' Institute	209 90
Freight and Drayage	33 56
Furniture and Fixtures (Department)	67 13
Lost Accounts	185 64
Sustentation	77 86
Miscellaneous Office Expense	6 86
Stationery Supplies Ptg. Etc.	57 73
Telephone	17 94
Light and Fuel	12 55
Insurance	6 50
Rent	69 00
Postage	99 90
<b>Total Expense</b>	<b>\$ 844 57</b>
<b>Net Gain for Year</b>	<b>203 95</b>
	<b>\$1048 52</b>

Inventories:

Merchandise	1354 60
Furniture & Fixtures	383 95
Postage	14 61

1753 16

Total Assets

\$4964 95

LIABILITIES AND SURPLUS

Accounts Payable Publishers:

Oxford Univ Press.	\$ 20 19
Review and Herald	33 33
Pacific Press	28 70
So Pub Association	1173 37
Accts Payable (Indiv)	82 80
Southern Union Conf.	60 77
Mississippi Asso S D A	9 00
Literature Fund	2 02
Operative Deposit Acct	500 00
Reserve Bad Accounts	165 70

Total Liabilities

\$2075 88

Tract Society Balance Sheet, December 31, 1914

RESOURCES	
Cash and Bank	\$ 34 63
Accts Rec. (Indiv)	2738 82
Doubtful Accounts	282 75
Mississippi Conference	149 86
Mississippi Mission	5 73

SURPLUS	
Surplus Jan 1, 1914	\$2440 22
Net Gain Dec 31, 1914	203 95
	\$2644 17
Donations	244 90
<b>Surplus Dec 31, 1914</b>	<b>2889 07</b>

Mississippi Conference of S. D. A.

Mission Receipts First Seven Months 1915

Churches	Mem	Tithe	Per Capita	Tent Fund	Col Work	Total	Per Capita
Brookhaven	25	\$ 44 22	\$ 1 77	\$	\$ 1 60	\$ 45 82	\$ 1 85
Ellisville	10	5 00	50			5 00	50
Greenville	19	83 48	4 39		3 25	86 73	4 56
Hattiesburg	14	32 61	2 33			32 61	2 33
Jackson	16	92 63	5 79	2 00	1 20	95 83	5 99
Meridian	14	79 95	5 71		40	80 35	5 74
Natchez	11	27 35	2 49			27 35	2 49
Vicksburg	16	72 76	4 55		2 10	74 86	4 68
Yazoo City	16	56 79	3 55		2 10	58 89	3 68
Mission	12	26 64	2 22	3 00		29 64	2 47
Individuals		91 80				91 80	
<b>Totals</b>		<b>\$ 613 23</b>	<b>\$ 3 65</b>	<b>\$ 5 00</b>	<b>\$ 10 65</b>	<b>\$ 628 88</b>	<b>\$ 3 74</b>

TWENTY-CENT-A-WEEK FUND

Churches	Annual	Har Ing	Mid Sum	Missions	Sab S Off	Total Per Capita	Due	Short	
Brookhaven	\$	\$	\$	\$ 2 50	\$ 21 88	\$ 24 30	\$ 03	\$ 150 00	\$ 125 70
Ellisville		3 00	5 00			8 00	03	60 00	52 00
Greenville	11 74	45		4 65	25 58	42 42	07	114 00	71 58
Hattiesburg			3 95	1 25	12 68	17 88	04	84 00	66 12
Jackson		2 25	2 45	5 39	17 35	27 44	06	96 00	68 56
Meridian				5 01	11 51	16 52	04	84 00	67 48
Natchez					3 53	3 53	01	66 00	56 47
Vicksburg		1 05	1 29	30	21 26	23 90	05	96 00	72 10
Yazoo City	2 12	8 30			17 66	28 08	06	96 00	67 92
Mission	5 60	05		25	17 69	23 59	07	72 00	48 41
Individual	25	1 10		7 40	21 71	30 46			
<b>Totals</b>	<b>\$ 19 71</b>	<b>\$ 16 20</b>	<b>\$ 12 69</b>	<b>\$26 75</b>	<b>\$ 170 85</b>	<b>\$ 246 12</b>	<b>\$ 05</b>	<b>\$ 918 00</b>	<b>\$ 696 34</b>

Conference Revenue Statement For Year Ending December 31, 1914

EXPENSES		
Administrative Exp	\$	\$6977 32
Salary and Expense	5775 94	
General Expense	355 99	
Office Expense	235 21	
Camp-meeting Exp.	57 09	
Tent Fund	457 72	
Sou Union Worker	95 37	
<b>General</b>		<b>545 12</b>
Tithe to S U Conf	259 58	
5% to Missions	129 79	
Sustentation	155 75	
<b>Total Expense</b>		<b>\$7522 44</b>
INCOME		
Tithe	\$2600 99	
Appropriations	1836 59	
Tent Meeting Donation	84 02	
Negro Dep't 10%	297 24	
Emergency Fund	602 99	
Tent Fund Donations	201 50	
Worker Subscriptions	9 30	
<b>Total Income</b>		<b>5632 63</b>
Expense in excess of Income		1889 81
		<b>\$7522 44</b>

Conference Balance Sheet, December 31, 1914

LIABILITIES		
Bills Payable	\$ 500 00	\$
General Trust Funds	11 25	
Mississippi Tract Soc'y	149 86	
Canvasser's Fund	28 88	
Educational Fund	27 00	
Mississippi Conf Assn.	41 91	
Religious Liberty Fund	8 67	
Sou Union Conference	95 37	
Firms' Accts Payable	42 00	
Jackson City Fund	40 08	
Aged and Orphans	5 53	
Laborers Accts Pay'ble	426 58	
<b>Total Liabilities</b>		<b>\$1377 13</b>
RESOURCES AND DEFICIT		
Bank and Cash	\$ 308 93	
Mississippi Mission	108 85	
Jackson Bldg Fund	5 00	
Conference Poor Fund	70	
<b>Total Assets</b>		<b>\$ 423 48</b>
Net Loss for year ending Dec 31, 1914	\$1889 81	
Less Surplus Jan 1, 1914	936 16	
<b>Deficit Jan 1, 1915</b>		<b>953 65</b>
		<b>\$1377 13</b>

**Mission Revenue Statement For Year Ending  
December 31, 1914**

EXPENSE			
Administrative .....	\$	\$3158 42	\$
Salary and Expense ...	2828 47		
Administrative Expense	297 24		
Camp-meeting Expense	32 71		
<hr/>			
General .....		509 17	
Tithe to Union .....	120 70		
5% to Missions .....	60 36		
Sustentation .....	72 40		
P J Johnson .....	255 71		
<hr/>			
Total Expense ...		\$3667 59	
<hr/>			
INCOME			
Appropriations .....	1765 00		
Tithe .....	1211 44		
Tuition .....	30 65		
Donations .....	7 00		
<hr/>			
Total Income .....		\$3014 09	
Expenses in Excess of Income		653 50	
<hr/>			
		\$3667 59	

**Mission Balance Sheet, December 31, 1914**

31 1914			
RESOURCES			
Cash and Bank .....	\$	35 31	\$
Bills Receivable .....		322 00	
Tent Fund Purchases .....		73 25	
Personal Accounts Receivable .....		57 48	
Mississippi Conference Association ..		251 52	
<hr/>			
Total Resources .....		\$ 739 56	
LIABILITIES AND SURPLUS			
Personal Accounts Payable .....		205 95	
Harvest Ingathering .....		7 35	
Poor Fund .....		39	
Mississippi Tract Society .....		5 73	
Southern Publishing Association .....		20 44	
Mississippi Conference .....		108 85	
Religious Liberty Fund .....		46	
Tent and Emergency .....		16 00	
Canvassers Fund .....		1 00	
<hr/>			
Total Liabilities .....		366 17	
SURPLUS			
Surplus Jan 1, 1914 ...	\$	1026 89	
Net Loss .....		653 50	
<hr/>			
Surplus Dec 31, 1914.		373 39	
<hr/>			
		\$ 739 56	

Board of Trustees, Mississippi Conference Association;  
C. S. Wiest, President:

THIS is to certify that I have examined the accounts of the Mississippi Conference Association, a corporation, and have verified the various entries on the books from the original receipts and vouchers, have checked the trial balance at the close

of the year, and find the books to be in balance and the accompanying Revenue Statement and Balance Sheet to show the standing of the above association on January 1, to the best of my knowledge and belief.

Respectfully submitted,

G. H. CURTIS, Auditor.  
Southern Union Conference.

Dated this 4th day of April, 1915. Jackson, Mississippi.

**Conference Association Revenue Statement For Year  
Ending December 31, 1914**

INCOME			
Rent .....	\$	431 50	\$
W S Lowry .....		91	
<hr/>			
Total Income .....			\$ 432 41
EXPENSES			
Expense Account .....	\$	40 32	
Interest .....		56 43	
Repairs .....		12 75	
Insurance .....		17 50	
Deposit on Buildings ..		57 34	
Accrued Interest Jan 1.		51 64	
<hr/>			
Total Expense .....		\$ 235 98	
Gain Dec 31, 1914 ..		196 43	
<hr/>			
			\$ 432 41

**Conference Balance Sheet, December 31, 1914**

RESOURCES			
Cash and Bank .....	\$	16 88	\$
Accounts Receivable .....		146 91	
Jackson Ch Bldg ...		43 00	
Miss. Tract Society		9 00	
Miss. Conference ..		41 91	
Personal Accounts..		53 00	
<hr/>			
Bills Receivable .....		186 55	
Ellisville Property .....		251 52	
Real Estate .....		750 00	
Buildings .....		1911 56	
<hr/>			
Total Assets .....			\$3263 42
LIABILITIES AND SURPLUS			
Mississippi Mission .....	\$	251 52	
Pine Grove Church Property .....		266 55	
Department Reserve Buildings .....		57 34	
Accrued Interest .....		51 64	
Laurel Church Fund .....		21 10	
Notes Payable .....		1850 00	
<hr/>			
Total Liabilities .....		\$2498 15	
SURPLUS			
Surplus Jan 1, 1914 ...	\$	568 84	
Net Gain .....		196 43	
<hr/>			
Surplus Dec 31, 1914.		765 27	
<hr/>			
			\$3263 42

TO WHOM IT MAY CONCERN:

This is to certify that I have completed an audit of the records of the Mississippi Conference of S. D. A., the Mississippi Mission, and the Mississippi Tract Society for the fiscal year ending Dec. 31, 1914.

I have examined the original remittances and vouchers in connection with entries made, verified cash and bank balances, and believe the accompanying Revenue Statements and Balance Sheets to truly represent the standing of the conference and these departments on January 1, 1915.

Respectfully submitted,

G. H. CURTIS, Auditor.

Southern Union Conference.

Dated this 4th day of April, 1915, Jackson, Miss.

**Mission Revenue Statement For Seven Months  
Ending August 5, 1915**

EXPENSE			
Administrative:	\$	\$1710 42	\$
Salary and Expense.	1633 81		
General Expense ...	79		
Tent and Hall .....	75 82		
<hr/>			
General:		120 84	
Tithe .....	57 65		
Sustentation .....	34 46		
5% to Missions ....	28 73		
<hr/>			
Total Expense ...		\$1831 26	

INCOME			
Appropriations .....	\$1208 35		
Donations .....	8 35		
Tithe .....	576 53		
<hr/>			
Total Income .....		\$1793 23	
Net Loss for First Seven Months		38 03	
<hr/>			
		\$1831 26	

**Balance Sheet, August 5, 1915**

RESOURCES			
Bills Receivable .....	\$ 265 00		
Mississippi Conference	4 45		
Miss. Conf Association	251 52		
Personal Accts Rec....	50 14		
<hr/>			
Total Resources ....		\$ 639 36	

LIABILITIES			
Bank and Cash .....	\$ 6 52		
Emergency Fund .....	18 00		
Miss. Tract Society ...	11 94		
Personal Accts Payable	267 54		
<hr/>			
Total Liabilities ....		\$ 304 00	

SURPLUS			
Surplus Jan 1, 1915 ..	\$ 373 39		
Net Loss 1st 7 Months	38 03		
<hr/>			
Present Worth Aug 5, 1915		335 36	
<hr/>			
		\$ 639 36	

**Conference Revenue Statement For Seven Months  
Ending August 9, 1915**

EXPENSE			
Administrative:	\$	\$3356 23	\$
Salary and Expense.	3114 68		
General Expense ...	73 39		
Office Expense .....	52 09		
Tent and Hall .....	31 51		
Sou Union Worker..	57 90		
Tent Fund .....	25 85		
<hr/>			
General:		307 93	
Tithe to S U Conf...	146 64		
5% to Missions ....	73 31		
Sustentation .....	87 98		
<hr/>			
Total Expense ...		\$3664 16	

INCOME			
Appropriations .....	\$1543 75		
Tithe .....	1463 37		
Donations .....	327 43		
<hr/>			
Total Income .....		\$3334 55	
Net loss for first seven months		329 61	
<hr/>			
		\$3664 16	

**Balance Sheet, August 5, 1915**

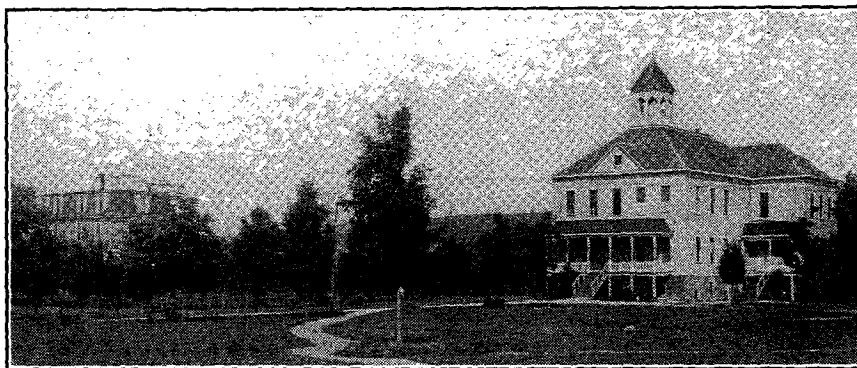
LIABILITIES			
Personal Accts Payable	\$ 268 29		
Bills Payable .....	500 00		
Miss. Tract Society ..	166 42		
Miss. Conf. Association	142 78		
Carnie Goudie .....	42 00		
Mississippi Mission ...	4 45		
Canvassers' Fund ....	29 88		
Aged and Orphans ....	5 53		
Educational Fund ....	27 00		
Jackson Fund .....	36 08		
Religious Liberty .....	24 29		
Sou Union Conference.	40 60		
<hr/>			
Total Liabilities ....		\$1287 32	

RESOURCES			
Bank and Cash .....	\$ 3 75		
Poor Fund .....	31		
<hr/>			
Total Resources ....		\$ 4 06	

DEFICIT			
Net Deficit Jan 1, 1915	\$ 953 65		
Net Loss 1st 7 Months	329 61		
<hr/>			
Net Deficit Aug 9, '15		1283 26	
<hr/>			
		\$1287 32	

A MAN can no more take in a supply of grace for the future than he can eat enough today to last him for the next six months or take sufficient air to his lungs at once to sustain life for a week to come. We must draw upon God's boundless store of grace from day to day as we need it.—D. L. Moody.

## Our Training Schools



### Southern Training School

THE Southern Training School has been a busy place during this vacation period. The church school teachers of the entire South have spent six busy weeks of study and conference, and at the close of this came the Educational and Missionary Volunteer Council, calling together a large number of workers in both these lines. These have now returned to their fields to take up the work with new determination to win the children and youth to God and help fit them for a place in his work.

In a few days a company of earnest teachers and students will be gathering for another year of study and work. School opens September 15.

It is encouraging to have so many express themselves as determined in view of the times and needs of the Lord's work, to make more of this school year than any previous one. We cannot meet the Lord's mind for us unless we do this.

The work is soon to be finished, and "with such an army as our youth rightly trained might furnish, how soon might the message of a risen and soon-coming Saviour be given to the world."

"All through our ranks are young men and women who should be trained for positions of usefulness and influence. Education is necessary for success in any field of usefulness."

Young reader, have you decided to give your life to God for service and to place yourself where you may receive the training to fit you quickly for his work? If not, can you afford to delay longer? Soon it will be too late. God wants you now. You cannot afford to consider any possible sacrifice too great. If you do not already have a copy, you should write for a calendar and application blank at once. Address A. N. Atteberry, principal, Graysville, Tenn.

### Hazel Notes

SUNDAY night, August 29, marked the opening of the Hazel tent meeting conducted by Elder W. R. Elliott. In spite of the stormy weather, an interested audience listened to an appealing sermon on the second coming of Christ. The academy family attended in body, going down in the big wagon.

At odd times the dormitory and grounds are being prepared for the reception of the young people whom we soon expect to meet.

From the farm we are now enjoying an abundance of home-grown produce.

The canner is doing good work and a large supply of fruit and vegetables is in cans for winter use.

Mr. Grounds, who will act as preceptor, has arrived. We are all glad to see him. Mr. Grounds always makes friends.

Miss Ruby Chastain from Jackson, Miss., has joined our family to take the place of Miss Mattie Hill who is spending a few weeks with her parents before school opens.

Earl Strawhun will soon leave to visit his parents for a few days.

Prospects are for a full attendance this fall. Old friends will meet and new friendships will be formed. We trust the Lord will use the school in a marked manner for the development of workers and for the saving of souls. Fathers and mothers, pray for the work in the academy this year.

—•—

"As ships meet at sea,— a moment together, when words of greeting must be spoken, and then away upon the deep,— so men meet in this world; and I think we should cross no man's path without hailing him, and, if he needs, giving him supplies."

## Louisiana Conference

### Twenty-Cent-a-Week Fund

Membership	Quota to Date	Amount Paid	Amount Short
<b>387</b>	<b>\$1,992.00</b>	<b>\$1,212.48</b>	<b>\$779.52</b>

### General Meeting

A GENERAL meeting for the southwestern part of the State of Louisiana will be held from September 23 to 26. The location of the meeting will be announced later. For this meeting we expect the help of several of the Southern Union Conference officers, and perhaps a representative of the North American Division Conference.

R. W. PARMELE.

### News Notes

Good reports have been received from Brother E. W. Radeke of Hammond, who has recently entered the colporteur field.

Miss Lura Reed is now enjoying a rest at her home, Lena Station, while recuperating after her recent operation.

The meetings at Mansfield are still in progress, and while the unfavorable weather lessened the attendance, honest souls are being sought out and an interest is being awakened.

A good, strong Harvest Ingathering Campaign should now be launched by every church, every Seventh-day Adventist family, and every individual member. The blessing is yours for the asking.

SPECIAL: All wishing to subscribe for the *Protestant* for the year 1916, may, by entering their subscriptions at once,



receive the last three issues of the present year free of charge. Price \$1 a year.

A recent order from Brother Turner for \$800 worth of books is an evidence of prospects for an excellent delivery. A "faith which worketh" is one of the essentials for successful colporteur work.

One excellent couple kept their first Sabbath at Mansfield last Sabbath. The attendance at the tent effort is good, and the workers are hopeful of a good harvest of souls.

Already good results are being seen from the presentation of the value of "the good old Review" in our homes, as rendered by the churches who followed the suggestive program for Sabbath, August 28, as presented in the *Church Officer's Gazette*. Many have been led to realize the valuable help to Christian living to be gained by reading the *Review and Herald*, and good lists of new subscribers are coming in.

### A Colporteur's Experience

The following encouraging words come from the colporteur field: "The Lord gave me one of the best experiences last week that I've enjoyed since being in the field.

"I had been working all morning among poor negroes. Shortly

after noon I came in sight of a large plantation home. As I approached the gate, the man, whom I knew to be wealthy, came to the gallery and gave me a cordial invitation to come in. He was very much interested in my book and readily gave me his order. As I arose to go, his wife came out. 'Ah!' she said, 'I was listening to you from the window there, and I wasn't going to let you get away until I saw *that book*. I have been wanting to get a book like that ("Bible Readings for the Home Circle") for a long time, as I wanted something to help me in studying the Bible, and to help me explain it to my children. Have been thinking I would write to the publishers of *Christian Standard* and see if they could get me a book of that kind. I am so glad you came. I wouldn't come out at first because I wanted you to sell it to him. I thought if he bought it, probably he would take more interest in reading it.' So I sat down again and showed her through the book. She was delighted with it. 'Well,' she said, 'I will take another one to send to my son in the Delta.' As I shook hands with them and bade them good-by, she said again, 'I am so glad you came, for you brought me what I have been wanting for years.' I can only praise the Lord for the great love he manifests toward us in permitting us to sow the seeds of truth that will finally yield a rich harvest of souls in the kingdom."

### Colporteurs' Report Southern Union Conference for Week Ending August 28, 1915

Name	Book	ALABAMA Hrs. Ords.	CONFERENCE Value	HELPS Helps	Total	Deliv.
G W Brown* . . . BF	48	6	\$11 00	\$ 3 80	\$14 80	\$
B D Crawford . BR	48	7	21 00		21 00	
H L Edwards . BR	27	6	18 00		18 00	6 00
S S Guilford . BR	29	15	51 00		51 00	
M L Ivory . . . D&R	38	3	9 00		9 00	
R T Jacks . . . BR	1					3 00
Mary Miles . BR	40	11	34 00		34 00	
Alex Wood . D&R	18	2	6 00		6 00	
Bibles . . . . .			4 85		4 85	

R H Hazelton . GC	40	14	29 00	60	29 60	
R A Judkins . COL	35	10	12 50	16 00	28 50	2 50
Wm J Keele . D&R	29	2	4 00	5 25	9 25	44 75
Chas R Smith . BR	45	11	34 00	1 15	35 15	1 25
Lloyd Swallen . BR	50	10	30 00	1 35	31 35	
Lucinda Sill . BF	16	7	10 00		10 00	
W B Tyus . . . BF	29	11	11 00	35	11 35	
J N Womack . BF	30	16	12 50		12 50	
J A Young . . . PG	20	2	6 00	75	6 75	
Bibles . . . . .			22 00	22 00	2 50	

Totals (Agts. 8) 249 50 \$154 85 \$ 3 80 \$158 65 \$ 9 00

Totals (Agts. 12) 386 117 \$270 50 \$33 10 \$303 60 \$51 00

G'd Totals (A. 36) 947 249 \$804 20 \$54 05 \$858 25 \$253 25

#### KENTUCKY CONFERENCE

JB Reichenbach BR	43	15	\$43 00	\$	\$43 00	\$
H E Beck . . . BF	17	4	5 50	1 00	6 50	
D E Pound . . . BF	28	6	6 00		6 00	
R W Harris . BR	33	18	43 00		43 00	
Mrs Manning . . .			26 55	2 30	28 85	
R F Raymond . BR	38	3	9 00	1 35	10 35	
D R Allman . D&R	25			12 00	12 00	72 00
J A Dominski . BR	5	1	3 00		3 00	
V B Sherer . . . BF	16	2	2 00		2 00	
Luther Bowles . BR	34	8	26 00		26 00	
L I Marcum . BR	10	2	6 00		6 00	
C C Oaks . . . BR	18	4	12 00		12 00	
Miscellaneous . . .			123 75		123 75	76 75
Bibles . . . . .			17 45		17 45	

Totals (Agts. 12) 257 63 \$323 25 \$16 65 \$339 90 \$148 75

#### LOUISIANA CONFERENCE

H McGilvrey PP&F	23		\$	\$	\$	\$36 50
E W Radeke . D&R	32	17	51 00	50	51 50	
Florence Page . BF						8 00
Bibles . . . . .	2		4 60		4 60	

Totals (Agts. 4) 55 19 \$55 60 \$ 50 \$56 10 \$44 50

#### TENNESSEE RIVER CONFERENCE

C G Bishop . D&R	44	27	\$83 00	\$ 3 95	\$86 95	\$
Bessie Cotton . BF	5	3	5 50	2 10	7 60	
RH Dewberry D&R	43	4	11 00	1 60	12 60	

\* Two Weeks.

### Summary from January 1 to Date

Conference	Orders	Helps	Deliveries
Alabama Conference . .	\$8121 00	\$ 159 30	\$1210 45
Kentucky Conference . .	13975 28	692 62	7631 34
Louisiana Conference . .	4657 56	177 50	1211 25
Mississippi Conference .	14850 10	542 80	2090 20
Tenn. River Conference .	5247 35	673 65	1655 85

Totals . . . . . \$46851 29 \$2245 87 \$13799 09

### Magazine Agents' Report for Week Ending August 28, 1915

Agent	ALABAMA CONFERENCE	No.	Value
B D Crawford . . . . .		20	\$ 2 00
H L Edwards . . . . .		3	30
	KENTUCKY CONFERENCE		
Seth T Walker . . . . .		50	5 00
Hattie Osterman . . . . .		50	5 00
Miscellaneous . . . . .		50	5 00
	TENNESSEE RIVER CONFERENCE		
Bessie Cotton . . . . .		73	7 30
Mrs M Johnson . . . . .		75	7 50
Wm J Keele . . . . .		23	1 15
Lucinda Sill . . . . .		30	3 00
Totals . . . . .		374	\$ 36 25

# SOUTHERN UNION WORKER

Published weekly (fifty numbers) by

## THE SOUTHERN UNION CONFERENCE

Embracing Tennessee River, Kentucky, Alabama, Mississippi, and Louisiana Conferences

511 Cole Building, Nashville, Tenn.

SUBSCRIPTION PRICE, FIFTY CENTS A YEAR

Printed by the Southern Publishing Association of Seventh-day Adventists

Entered as second-class matter, May 19, 1910, at the post-office at Nashville, Tenn., under the Act of March 3, 1879

### Pertaining to the Union

#### Twenty-Cent-a-Week Fund

Membership	Quota to Date	Amount Paid	Amount Short
2273	\$11,724.00	\$7,963.00	\$3,761.00

#### Report of Twenty-Cent-a-Week Fund August 1, 1915

Conference	Mem	Quota for Yr	Am't Pd	To Be Raised	Short'ge
Alabama . . . .	450	\$3510 00	\$1330 84	\$2179 16	\$ 694 16
Kentucky . . .	426	3910 40	2151 60	1758 80	104 40
Louisiana . . .	387	3452 80	1212 48	2240 32	779 52
Mississippi . .	311	2360 80	846 00	1514 80	516 00
Tenn. River . .	699	7087 60	2422 08	4665 52	1666 92

Totals . . . 2273 \$20321 60 \$7963 00 12358 60 \$3761 00  
 G. H. CURTIS, *Treasurer.*

#### Our Mission Fund Report

WE are sure that our friends throughout the Southern Union will be interested to see the statement of the standing of the twenty-cent-a-week fund, which appears in this issue of the WORKER.

In this report it will be observed that we have shown the quota for the entire year for each conference, also the total amount yet to be raised. By a study of the report, the standing of each conference with shortage to date will be readily seen, also the standing of the Union as a whole. It will be observed that we are short up to date \$3,761.00, with an amount yet to be raised before January 1, 1916 of \$12,358.60. It is quite probable that full returns have not come in from the mid-summer offering, which we hope will materially decrease the shortage.

With a large amount yet to be raised before us, a strong effort should be put forth by every Seventh-day Adventist in this Union, and each one should feel the responsibility resting upon him in helping to raise this money which is so much needed in the fields beyond.

This report includes the membership and the amount paid by the Southern Union Mission and the quota as based on the rate of ten cents a week as has been announced heretofore. Our conferences have made a rate of thirteen cents per member up to the time of this report, while the missions have made a rate of eight cents per member.

We will call special attention to the Harvest Ingathering Campaign which is now upon us and each church as well as the isolated members should begin to plan at once for a vigorous campaign with these good papers.

G. H. CURTIS, *Treasurer.*

### Alabama Camp-Meeting

THE camp-meeting for 1915 is now in the past. It was located on a side hill, but the place will ever be a Bethel to many people. They were not allowed to pitch a dining tent, so all were obliged to go down the hill to a house for meals. This made it quite inconvenient, but every one made the best of it. Several people who had not previously kept the sabbath decided to do so, and to join with us. There was a good outside attendance at all the evening services. Their earnestness was very marked which gave the meetings more than usual interest.

The conference work passed off harmoniously. There was no change in the officers. The conference committee was increased to seven. All departments reported an increase which was very encouraging. The conference arranged for an ordained minister to give his entire time to the home missionary work. It is believed when all the people are enlisted in this work earnestly that God will pour out his Spirit, and the work will soon close.

Besides the union conference laborers, Elders C. M. Sorenson and L. A. Hoopes were in attendance. Their services were very much appreciated. The last Sabbath Brother J. F. Wright was ordained to the gospel ministry. This conference has now four ordained ministers. The prospect for the future development of the work was never better than at present.

S. E. WIGHT.

### An Appeal for Help

THE church school at Lawrenceburg, Tennessee, has been doing good work the past three years, but on account of lack of means to purchase much-needed supplies and books, has not been able to accomplish the best work. We have felt that our brethren throughout the conference would be glad to make a small contribution to assist the brethren at that place in the buying of such books and supplies as are necessary for the school work. They have a building there, and Mrs. H. I. Reese has been elected to take charge of the school for the coming term. She has assured us that she will do all in her power to make the work a success, and will appreciate any donations that may be turned in from the conference at large. It will require about \$20 to fully equip the school with the necessary books, etc. All donations for this cause may be sent to the conference office, 509 Cole Building, Nashville, Tennessee.

F. C. BRUCE.

### Two Telegrams

Portland, Maine.

SEND at once, 100 Harvest Ingathering *Signs*. Please rush order. If I get them in ten days or two weeks, I expect to receive \$100 for them, or an average of one dollar apiece. Please forward them as soon as possible.  
 (Signed) A. E. SANDERSON.

One hundred Harvest Ingathering papers came August 7. We began immediately, and disposed of each one. Some over one hundred dollars has been received in return. Our campaign has started in earnest. The goal for the church here is \$1,000. Pray for us.

(Signed) A. E. SANDERSON.

This order from Brother Sanderson was the first lot of Ingathering papers sent out this year. The Portland Church is to be congratulated on setting such a good pace for us and certainly for the splendid goal fixed.

SIGNS OF THE TIMES.

J. COCHRAN, *Circulation Manager.*

"SIMPLICITY and plainness are the soul of elegance."