

# SOUTHERN UNION WORKER

"My meat is to do the will of Him that sent me, and to finish His work."

Vol. X

NASHVILLE, TENNESSE, AUGUST 10, 1916

No. 31

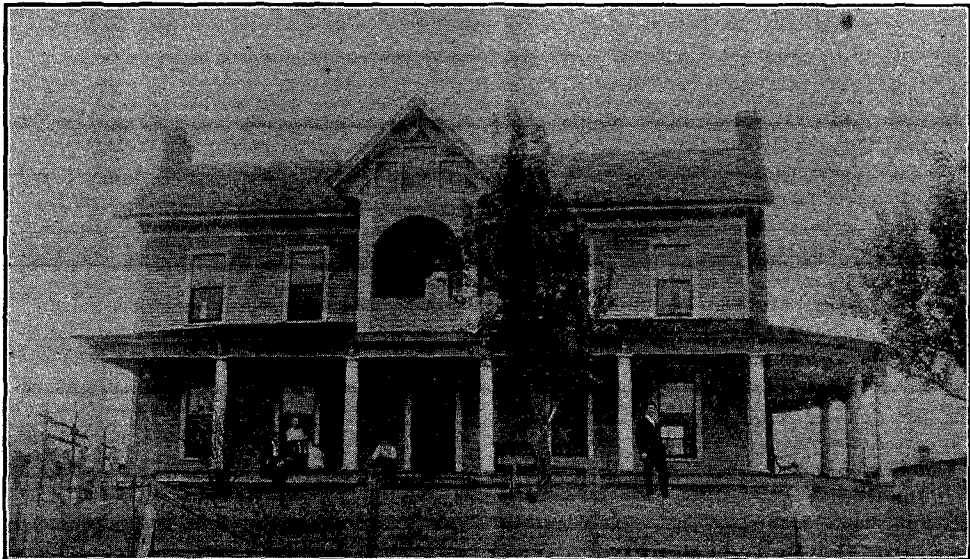
## The Ooltewah School

The accompanying picture will give some idea of the large house on the farm which is being purchased as the new home of the Southern Training School. This building will undoubtedly be the girls' dormitory for the coming winter, and will provide comfortable quarters for the students who are in attendance at the school this first year. In succeeding issues of this paper there will appear other views of the farm which we are sure will prove interesting to our readers.

From reports that are coming into our office, we are assured of the great interest that is being shown by our people in their

at the other camp-meetings soon, and we will be pleased to report from time to time the progress of the campaign.

Recently Prof. A. N. Atteberry, principal of the Southern Training School, spent a few days visiting some of the churches in northern Alabama. He reports that the churches everywhere are interested in the new school, not only to get their young people in the school, but are just as anxious to help financially to establish the school and equip it properly. In company with the writer Professor Atteberry visited the Birmingham church on July 15, and at the morning service over \$100 was quickly



Near view of the large ten-room farm house on the S. T. S. farm near Ooltewah, Tenn. The rooms are extra large and airy, and our girls will have a comfortable home from the start.

efforts to raise the ten-thousand-dollar fund necessary to install the school in its new location this fall. Our people are taking hold with great enthusiasm, and wherever the needs of the school have been presented by the workers, have responded liberally with cash and short-time pledges. In the few days since this matter has been presented to our people generally, quite a large amount has already been raised for this purpose, and the campaign has only begun.

During the past week Elder W. R. Elliott and Brother M. F. Knox, the treasurer of the Southern Publishing Association, have visited portions of west Tennessee and report donations amounting to \$354. The Memphis church made themselves responsible for \$284 of this amount. Other places will be visited soon in the interest of the school.

From the Louisiana camp-meeting, Professor Wood sends us the news that the little company of believers gathered at that place had raised \$368.50. The school work will be presented

raised. This was followed by an evening service, at which \$25 was subscribed by others who were not present at the morning service. On Sunday evening the colored church in Birmingham was given an opportunity to give, and very cheerfully added \$25 to the fund already raised in Birmingham. The churches at Borden Springs, Elkwood, Anniston, and other points were visited later. Altogether the Alabama Conference has raised to date about \$557.

From Elder W. H. Branson, president of the Southeastern Union Conference, we learn that about \$1,300 was raised in Florida at the time of the report, and they had visited only one or two churches at that time.

A sister in California, hearing of our needs, has donated \$1,000 to assist us in our enterprise. It is interesting to note that a brother in Scotland, after reading an article in the *Review and Herald* regarding the establishment of this new school, had a desire to assist this worthy cause and forwarded one dollar

as his donation. Surely if this brother in far-away Scotland is so much interested in this work, our people in the South who will be directly benefited by this school will rally nobly to its support.

A report of all donations by churches will appear in the *WORKER* as soon as space will permit. If you feel impressed to

assist us in this effort to start a school without incurring any debt, kindly send your donation to your local conference treasurer or direct to the writer, as funds will be needed at the earliest possible moment.

G. H. CURTIS,  
*Treas. Southern Union Conference.*

## Alabama Conference

*Sunset Table. Standard Time.*

*East 6: 26*

*Friday, August 11*

*West 6: 47*

### President's Annual Address

To the delegates, and brethren and sisters, assembled in the fourteenth annual session of the Alabama Conference of Seventh-day Adventists, Greeting:

The members of the Conference Committee extend a hearty welcome to the delegates from the different churches, as well as to the laity who will be privileged to meet with us during this session. How quickly the year has gone! It hardly seems possible another year has passed into eternity since we were in our last annual session at Birmingham. But the year has gone, and its records are made. We trust it has been a year of growth in grace and drawing nearer to God by us all. Each year should find us more nearly like our blessed Master.

The titanic struggle in Europe is still raging. When we think of three-fourths of the earth's inhabitants spending their energies in means and methods to kill their fellow-men, it is awful; and every lover of truth should bestir himself to do all he can to speedily give this message before the last act in the drama closes.

Each year finds some change in the personnel of our laborers. Elder Bellinger, who has been with us since my connection with the conference, was called the first of May to the Tennessee River Conference. We wish him every success in his new field. The Lord has blessed with a reasonable degree of health and strength every laborer, none having fallen at his post. However, among the laity some have been visited by the angel of death. We express our heartfelt sympathy for those who have been called upon to mourn the loss of loved ones.

#### THE WORK

When comparing the work in general with that of other years, we can see that progress has been made. But, as is always the case, there is a falling off in some lines. A steady growth is always the most substantial. A flashy work is usually followed by a fall and discouragement. Our policy is a steady growth, which always brings strength, hope, and courage.

#### EVANGELICAL WORK

Every department of the work is, or should be, in its aim evangelical. Soul-saving is the object and purpose of the gospel, let it be in what line or department of the work it may.

The Lord has blessed the laborers in their work during the past year. Almost every church has had some additions, and every minister and Bible worker has had a part in bringing these souls into the truth. Elder Keate has labored principally in Birmingham. Elder Wright, while located in Montgomery, has had to visit many of the churches in connection with his departmental work. Elder Bellinger labored in Mobile and vicinity until called to his new field. During the year two tent efforts have been held, one each for the white and colored, and fourteen other meetings have been held, seven for the white and seven for the colored. As a result of these efforts, in connection with the Bible work and the home missionary work of the laity, one hundred seventeen souls have been added to the churches, seventy-five to the conference and forty-two to the mission. Two churches have been organized, the one at Silverhill with a membership of eighteen. This church resulted from

a request of the Marlow church to separate the believers in and around Silverhill from the Marlow church and organize them into an organization of their own. The other was the colored church at Bessemer, chiefly the result of a tent effort, the interest being followed up by Brother Roberts.

Various hindrances prevented our visiting the churches and holding meetings with them as we had planned. We hope this can be done this coming year, as well as entering new places.

#### FINANCE

Finance is a very necessary part of the gospel work. The whole work of the gospel is based upon the principle of giving. "God so loved the world, that he gave his only begotten Son." "The gift of God is eternal life through Jesus Christ our Lord." The Lord calls upon us to give ourselves and our all to him. When the Corinthian brethren gave themselves unto the Lord, they willingly gave of their means to the support of the work. God promises the rich blessings of heaven upon the faithful soul who will render unto him his own in "tithes and offerings." But he says a curse will come to every unfaithful soul for not rendering unto him his own.

If every believer were faithful in the paying of tithes and offerings there would be plenty of means to speedily finish the work. Not many, if any, of the local treasurers find every member of the church paying tithe. But should it not be so? The indications last camp-meeting were that our tithe would not be as much in 1915 as it was in 1914. The close of 1915 showed the year to be \$141.49 short in tithe of the year 1914. If all are faithful, our tithe this year will equal that of 1914. In 1913 the tithe was \$4,844.76. in 1914, \$6,084.09, and in 1915, \$5,942.60. The treasurer's report will give the full particulars in the different funds.

#### HOME MISSIONARY WORK

At the last camp-meeting Elder J. F. Wright was selected as home missionary secretary. During the year he has visited most of the churches in the interest of this work, and also that of the Missionary Volunteers. We are pleased to report our churches are taking hold of the missionary work nicely, and a splendid work is being done. Many are beginning to realize that the ministry can never finish the work of God in the earth; but that the ministry with the laity can finish the work, and finish it in this generation. May the Lord put the spirit of work upon every believer.

#### MISSIONARY VOLUNTEER WORK

The Missionary Volunteer work, among us as a people, was started in 1907, when it was voted at Gland, Switzerland, to organize this department. We are pleased to see this branch of the work making the progress it is in our field. Our youth are our greatest asset. Upon them will rest the great burden of finishing the work of God in the earth. We hope that every church that has as many as five young people will organize a young people's society, if they have not already done so. Nearly all the churches have done this. We pray the Lord's richest blessing to rest upon our young people.

BOOK-WORK

The book-work is a work of the highest order, but not always so regarded. In the remote past the colporteur work has been looked upon by many as of a lower order than the other branches of the work. We thank God this sentiment is changing and that this branch of the work is taking its rightful place in the giving of the message. About fifty per cent of all who accept the truth, accept it through the printed page. Surely this is a work of the highest order and one that needs the support of every lover of truth. This branch of self-supporting work opens its arms to many to come and work in the Lord's vineyard. If you are a faithful worker, it will give you a living and help you save many souls for the kingdom. Our orders this year are much larger than they were this time last year. There is also a gain in the deliveries for the first six months of the year. We are thankful a more permanent class of workers are entering the field, and we hope many more will enter this field for the Master.

SABBATH SCHOOL WORK

We thank God for the Sabbath school. The Sabbath school is the principal Sabbath service in many of our churches. This branch of our work is the great educator in the Word, bringing to all the knowledge of divine truth. It is here the plastic mind of children and youth receives much of the mold that decides their eternal destiny. Here is the field where most of the youth are brought to God. Not only is the Sabbath school one of the best evangelistic agencies, but it is one of the most important fields for gathering mission funds. We have 19 white

schools and 10 colored schools, a total of 29 schools with a membership of 782. The offerings from the white schools amounted to \$1,434.34; from the colored, \$679.03; making a total of \$2,113.37.

EDUCATIONAL WORK

Our schools have been established in order that our children might receive a Christian education. An education merely for citizenship in this world is a one-sided education. We need not only an education for the citizenship of this world, but an education for the citizenship of heaven. Since it is dangerous to try to secure a full and complete education outside of denominational schools, especially in this age of the world, our schools have been established among us. Wherever it is possible, we trust every Seventh-day Adventist parent will place his children in some of our schools. During the past year we had seven white schools and three colored schools in operation with 101 and 150 scholars, respectively; a total of 251 in our schools for the year.

OUR NEEDS

Our greatest need is a daily death to sin, and a spirit-filled life dedicated to God. We need every church thoroughly organized for missionary work. We need a number of life-work colporteurs. We need \$500 in the Tent and Camp-meeting Fund to buy tents, cots, and seats. Soon we will meet in our last camp-meeting, the work will be finished, and our Lord will come. May the grace of God abide with you all.

A. L. MILLER.

Conference Revenue Statement for 1915

EXPENSE		
Administrative .....		\$6688 57
Salary and Expense ...	\$6033 45	
General .....	164 08	
Tent and Hall .....	104 06	
Office .....	386 98	
<hr/>		
General .....		1247 95
Tithe to S. U. Conf. ....	\$ 594 26	
Sustentation Fund. ....	356 56	
5 per cent to Missions.	297 13	
<hr/>		
Miscellaneous .....		368 85
So. Union Worker .....	\$ 180 12	
Less Receipts .....	2 50	
<hr/>		
	\$ 177 62	
Loss on Camp-meeting.	82 34	
Summer School Grays.	58 75	
Overdraft M. of H. Fd.	24 47	
Audit'g Committee Ex	25 67	
<hr/>		
Total Expense .....		\$8305 37
<hr/>		
INCOME		
Tithe .....	\$5942 60	
S. U. C. Appropriation.	1200 00	
Negro Dep't 10% .....	424 02	
Tent Meeting Collec's.	94 85	
School Fund .....	73 50	
<hr/>		
Total Income .....	\$7734 97	
Operating Loss for 1915	570 40	
<hr/>		
		\$8305 37

together with proper vouchers for incoming and outgoing funds, and after verifying all accounts I find the accompanying statement truly represents the standing of the conference as of Jan. 1, 1916.

G. H. CURTIS, Auditor So. Union Conference.  
Birmingham, Ala., June 16, 1916.

Conference Balance Sheet, Jan. 1, 1916

RESOURCES		
Cash on Hand .....		\$ 96 33
Conference Accounts		
Alabama Mission ...	10 00	
Alabama Conf. Assn	5 12	
Personal Accounts		
A. L. Miller .....	10 00	
W. R. Tolman .....	2 00	
Overdraft Accounts ...		
Tent Fund .....	200 82	
Religious Liberty ...	2 45	
Meter Deposit .....	2 50	
<hr/>		
Total Resources .....		\$ 329 22
<hr/>		
LIABILITIES		
Alabama Tract Society	\$ 77 12	
Personal Accounts ...	21 10	
C. E. Giles .....	\$ 8 60	
O. P. Ivie .....	12 50	
So. Union Conference .	32 09	
Young People's Tent Fd	58 00	
General Trust Funds ..	6 17	
<hr/>		
Total Liabilities .....		\$ 194 48
<hr/>		
SURPLUS		
Surplus Jan. 1, 1915 ...	\$ 705 14	
Loss for 1915 .....	570 40	
<hr/>		
Surplus Jan. 1, 1916.		134 74
<hr/>		
		\$ 329 22

TO WHOM IT MAY CONCERN:

This is to certify that I have made a careful audit of the books of account of the Alabama Conference of Seventh-day Adventists,

**TO WHOM IT MAY CONCERN:**

I have today completed an examination of the receipts and expenditures of the Alabama Mission, and find every entry to be correct and the books to be in balance.

The statement attached correctly represents the business of this department for the past year.

G. H. CURTIS, Auditor So. Union Conference.

Birmingham, Ala., June 16, 1916.

**Mission Revenue Statement for 1915**

EXPENSE		
Laborers' Expense . . . . .		\$2956 76
Salary and Expense . . . . .	\$2873 60	
General . . . . .	26 00	
Tent and Hall . . . . .	57 16	
<hr/>		
General . . . . .		504 35
Tithe to Union . . . . .	\$ 219 43	
Sustentation . . . . .	155 41	
5% to Missions . . . . .	129 51	
<hr/>		
Miscellaneous . . . . .		911 59
Administrative Exp. . . . .	\$ 424 02	
Appro. Oakw'd Sch. . . . .	352 35	
Appro. Huntsv'le Ch . . . . .	50 00	
Loss Camp-meeting . . . . .	65 46	
Lost Acc (S. D. M.). . . . .	9 76	
Appro Bir'm, Sylaca. . . . .	10 00	
<hr/>		
Total Expense . . . . .		\$4372 72
INCOME		
Tithe . . . . .	\$2590 22	
Appropriations . . . . .	1650 00	
Donations . . . . .	32 71	
<hr/>		
Total Income . . . . .	\$4272 93	
Expense Exceeds Income . . . . .	99 77	
<hr/>		
		\$4372 72

**Mission Balance Sheet, Jan. 1, 1916**

LIABILITIES		
Alabama Conf. Assn. . . . .	\$ 268 00	
Alabama Tract Society . . . . .	84 74	
Alabama Conference . . . . .	10 00	
Religious Liberty Fund . . . . .	60	
<hr/>		
Total Liabilities . . . . .		\$ 363 34
RESOURCES		
Cash . . . . .	36 09	
Seat Fund . . . . .	29 68	
<hr/>		
		\$ 65 77
DEFICIT		
Deficit Jan. 1, 1915 . . . . .	\$ 197 80	
Net Operating Loss . . . . .	99 77	
<hr/>		
Deficit Jan. 1, 1916. . . . .		297 57
<hr/>		
		\$ 363 34

**TO WHOM IT MAY CONCERN:**

I have today finished an audit of the books of the Alabama Tract Society, and present herewith a correct statement of the income and expense for the year 1915 and the standing of this department on Jan. 1, 1916.

Proper vouchers were presented for all entries and sufficient cash was on hand to meet the demands of the books.

G. H. CURTIS, Auditor So. Union Conference.

Birmingham, Ala., June 16, 1916.

**Tract Society Revenue Statement for 1915**

EXPENSE		
Depreciation, Bad Accounts . . . . .	\$ 522 37	
Office Expense . . . . .	247 61	
Depreciation on Furniture . . . . .	123 14	
Freight, Express, and Parcel Post . . . . .	127 69	
General Expense . . . . .	152 59	
Postage . . . . .	96 63	
Sustentation . . . . .	32 75	
<hr/>		
Total Expense . . . . .		\$1302 78
INCOME		
Sale of Merchandise . . . . .	\$5210 57	
Inventory, Dec. 31 '14. . . . .	\$ 699 59	
Purchases of New Stock . . . . .	3443 36	
Stock Returned . . . . .	1748 21	
<hr/>		
	\$5891 16	
Inventory, Dec. 31, '15. . . . .	812 80	
<hr/>		
Cost of Goods Sold . . . . .	5078 36	
<hr/>		
Gross Profit on Stock . . . . .	\$ 132 21	
Net Operating Loss for year . . . . .	1170 57	
<hr/>		
		\$1302 78

**Tract Society Balance Sheet, Jan. 1, 1916**

RESOURCES		
Cash on Hand . . . . .	\$ 562 26	
Accounts Receivable . . . . .		
Individual . . . . .	\$1870 45	
Less Reserve . . . . .	913 78	956 67
<hr/>		
Notes Receivable . . . . .		67 05
Conference Accounts . . . . .		274 44
Alabama Conference . . . . .	\$ 84 52	
Alabama Mission . . . . .	82 94	
Oakwood School . . . . .	102 73	
Surplus . . . . .	4 25	
<hr/>		
Total Cash and Accounts . . . . .		\$1860 42
Inventories:		
Stock of Books on Hand . . . . .	\$ 812 80	
Office Fur. and Fix. . . . .	499 62	
Expense . . . . .	35 58	
Overpaid Sustenta'n . . . . .	1 81	
<hr/>		
Total Inventories . . . . .		1349 81
<hr/>		
Total Resources . . . . .		\$3210 23

LIABILITIES		SURPLUS	
Notes Payable .....	\$1150 00	Surplus Jan. 1, 1915...	\$1408 28
Trustees B'ham Church	50 00	Net Loss for 1915.....	1170 57
So. Pub. Association ..	1569 55		
The MacMillan Co. ....	3 06		\$ 237 71
Mass. Tract Society. . .	11 36	Donations .....	117 50
Pac. Press Pub. Assn. . .	1 80		
Accrued Interest.....	14 31	Surplus Jan. 1, 1916...	\$ 355 21
Acc. Payable (Personal)	54 94		
<b>Total Liabilities ....</b>	<b>\$2855 02</b>		<b>\$3210 23</b>

**Tract Society Retail Sales Report for Year 1915**

Months	SubBooks	HomeWorks	Bibles	Tracts	Misc	Mags	Totals
January .....	\$ 99 89	\$	\$ 4 60	\$ 11 13	\$ 55 66	\$ 236 10	\$ 407 38
February .....	102 89	25		2 46	28 68	127 30	261 58
March .....	151 44	75		2 78	62 48	99 47	316 92
April .....	264 54		5 00	1 08	19 92	75 00	365 54
May .....	446 30	4 00	10 70	1 35	20 32	98 50	581 17
June .....	232 90		85	1 20	36 09	102 13	373 17
July .....	490 50		14 45	12 45	20 68	80 45	618 53
August .....	1019 35	4 20	27 85	4 49	58 80	85 71	1200 40
September .....	1901 85		123 25	11 01	100 20	71 71	2208 02
October .....	811 50	7 90	37 88	2 00	213 52	87 50	1160 30
November .....	123 93	14 35	6 55	1 88	100 32	165 27	412 31
December .....	153 40	7 25	2 75	3 49	81 22	113 13	361 24
<b>Sales .....</b>	<b>\$5798 49</b>	<b>\$ 38 70</b>	<b>\$ 233 88</b>	<b>\$ 55 32</b>	<b>\$ 797 90</b>	<b>\$1342 27</b>	<b>\$8266 56</b>
<b>Returns .....</b>	<b>3186 16</b>	<b>30</b>	<b>79 52</b>	<b>2 42</b>	<b>32 45</b>	<b>34 63</b>	<b>3335 48</b>
<b>Net Sales .....</b>	<b>\$2612 33</b>	<b>\$ 38 40</b>	<b>\$ 154 36</b>	<b>\$ 52 90</b>	<b>\$ 765 45</b>	<b>\$1307 64</b>	<b>\$4931 08</b>

**Tract Society Retail Sales Report First Six Months of 1916**

January .....	\$ 64 00	\$12 00	\$ 6 18	\$ 20 88	\$ 57 80	\$ 138 73	\$ 299 59
February .....	72 70	8 25	5 00	5 77	51 75	163 10	306 57
March .....	140 35	4 50		2 31	60 65	161 00	368 81
April .....	328 10	3 00	10 30	6 53	24 35	209 06	581 34
May .....	669 98	4 45	11 15	83	13 30	180 70	880 41
June .....	313 90	30	10 25	2 39	54 44	93 26	474 54
<b>Sales .....</b>	<b>\$1589 03</b>	<b>\$ 32 50</b>	<b>\$ 42 88</b>	<b>\$ 38 71</b>	<b>\$ 262 29</b>	<b>\$ 945 85</b>	<b>\$2911 26</b>
<b>Returns .....</b>	<b>237 75</b>	<b>75</b>	<b>16 95</b>		<b>14 18</b>	<b>79 75</b>	<b>349 38</b>
<b>Net Sales .....</b>	<b>\$1351 28</b>	<b>\$ 31 75</b>	<b>\$ 25 93</b>	<b>\$ 38 71</b>	<b>\$ 248 11</b>	<b>\$ 866 10</b>	<b>\$2561 88</b>
<b>Net Sales, same period 1915.....</b>	<b>*879 05</b>	<b>4 70</b>	<b>*44 97</b>	<b>18 33</b>	<b>199 74</b>	<b>723 00</b>	<b>21 75</b>
<b>Gain over corresponding period 1915</b>	<b>\$2230 33</b>	<b>\$ 27 05</b>	<b>\$ 70 90</b>	<b>\$ 20 38</b>	<b>\$ 48 37</b>	<b>\$ 143 10</b>	<b>\$2540 13</b>

\* Returns in excess of sales.

O. R. GODSMARK, Treasurer.

**Camp-meeting Notice.**

The mission camp-meeting is to be held at Montgomery, August 24-September 3. Last year it was said by many to be the best meeting ever held. This is as it should be, but this year the meeting should be a better meeting than that of last year. One way to have a good meeting is for a goodly number to be present. We trust every one who can will attend this annual gathering, and that you will plan to be present throughout the entire meeting.

We hope to have good help for this meeting. We are expecting Elder C. B. Stephenson, secretary of the North American Negro Department, and Prof. C. J. Boyd, principal of the Oakwood School, as well as others.

Everything will be done that can be done to make your expense as little as possible, yet the charge for tents and meals should be such as to meet the expenses of the meeting. Send your order for tent to Elder T. B. Buckner, 411 Range St., Dothan, Ala. Remember the time and place, and plan to come.

A. L. MILLER.

Board of Trustees of the Alabama Conference Association of Seventh-day Adventists, Elder A. L. Miller, president:

I have completed a careful examination into the affairs of the Alabama Conference Association of Seventh-day Adventists (a corporation), and can certify that the statement herewith presented is a correct showing of the association as of Jan. 1, 1916.

G. H. CURTIS, Auditor So. Union Conference.  
Birmingham, Ala., June 16, 1916.

**Conference Association Revenue Statement for 1915**

	INCOME	
Interest Receivable ...	\$	6 00
	EXPENSE	
Interest Payable.....		3 61
<b>Net Income.....</b>	<b>\$</b>	<b>2 39</b>

## Conference Association Balance Sheet, Jan. 1, 1916

RESOURCES		
Notes Receivable.....	\$ 900 00	
Alabama Mission.....	268 00	
Sheffield Church.....	157 50	
<b>Total Resources....</b>		<b>\$1325 50</b>
LIABILITIES		
Notes Payable.....	\$ 607 50	
Alabama Conference..	5 12	
Brewton Church.....	18 00	
Accrued Interest.....	3 61	
<b>Total Liabilities....</b>		<b>\$ 634 23</b>
SURPLUS		
Surplus Jan. 1, 1915...	\$ 688 88	
Net Gain for 1915.....	2 39	
<b>Surplus Jan. 1, 1916</b>	<b>691 27</b>	
		<b>\$1325 50</b>

## Conference Revenue Statement, Six Months Ending July 1, 1916

EXPENSE		
Auditing Committee Expense.....	\$ 9 26	
Expense .....	254 02	
5% to Missions .....	159 23	
General Expense.....	107 29	
Salary and Expense .....	2930 44	
Southern Union Worker .....	70 10	
Summer School.....	3 00	
Sustentation Fund.....	191 17	
Tent and Hall Expense .....	90 82	
Tithe to Union .....	318 45	
<b>Total Expense.....</b>		<b>\$4133 78</b>
INCOME		
Administrative 8%.....	\$ 80 67	
Appropriations .....	750 00	
Donations .....	57 51	
1% Fund.....	48 03	
Tithe .....	3184 42	
<b>Total Income .....</b>	<b>\$4120 63</b>	
Expense Exceeds Income .....	13 15	
		<b>\$4133 78</b>

## Conference Balance Sheet for Six Months Ending July 1, 1916

RESOURCES		
Alabama Mission .....	\$ 72 25	
Brown, L. W. ....	14 75	
Cash .....	494 23	
General Trust Funds.....	50	
Laborers' Overdrafts.....	73 67	
Meter Deposit .....	10 00	
Seat Fund .....	29 68	
Stereopticon .....	63 30	
Tent Fund.....	145 82	
<b>Total Resources .....</b>		<b>\$ 904 20</b>

## LIABILITIES

Alabama Conference Association....	\$ 487 88
Alabama Tract Society.....	135 79
Laborers' Accounts Unpaid.....	1 00
Religious Liberty Fund.....	19 98
Southern Training School.....	1 00
Southern Union Conference.....	33 15
Stereopticon Donations.....	3 07
Suspense .....	1 76
Young People's Tent.....	98 98
<b>Total Liabilities .....</b>	<b>\$ 782 61</b>
Surplus Jan. 1, 1916 .....	\$134 74
Loss First Six Months.....	13 15
<b>Surplus July 1, 1916.....</b>	<b>121 59</b>

\$ 904 20

## Operating Statement of the Mission for First Six Months 1916

INCOME		
Appropriations .....	\$ 900 00	
Donations .....	9 80	
1% Fund.....	13 17	
Tithe .....	1078 78	
<b>Total Income .....</b>		<b>\$2001 75</b>
EXPENSE		
Administrative 8% .....	\$ 80 67	
5% to Missions.....	53 97	
General Expense.....	77	
Salary and Expense .....	1421 81	
Sustentation .....	64 76	
Tent and Hall.....	46 52	
Tithe to Union .....	107 93	
<b>Total Expense.....</b>	<b>\$1776 43</b>	
Income Exceeds Expense .....	225 32	
		<b>\$2001 75</b>
Deficit Jan. 1, 1916.....	\$ 297 57	
Gain for Six Months.....	225 32	
<b>Deficit July 1, 1916 .....</b>	<b>\$ 72 25</b>	

## Church Elders

We call your special attention to Present Truth Series, Religious Liberty,—Extra No. 8. This number is devoted wholly to the principles of religious liberty. If you have not seen this number of the Present Truth Series you should by all means get one, and then send in your order for the needs of your church. Order from the Alabama Tract Society, 316 Lyric Bldg., Birmingham, Ala. Now is the time to get the principles of liberty before the people.

“Doctrines are of use only as they are practised. Men may go to perdition with their heads full of truth. To hold the truth and fight for it is one thing. To be sanctified through it is another.”

**Comparative Six Months Report of Home Missionary Work for Conference and Mission**

	1915	1916
Number churches .....	26	26
Membership .....	596	404
Number reporting (average) .....	184	355
Letters written .....	899	1701
Letters received .....	455	1211
Missionary visits .....	3256	5393
Bible readings .....	1526	2000
Subscriptions .....	88	319
Papers sold .....	1180	3972
Papers given away .....	11441	15030
Books sold .....	453	893
Books loaned .....	713	847
Tracts sold .....	90	435
Tracts loaned .....	5874	3817
Hours of Christian help work .....	3387	7050
Clothing given away .....	552	1386
Meals provided .....	1164	2513
Treatments given .....	313	982
Signers to Temperance Pledge .....	43	76
Offerings .....	\$ 180 96	\$ 230 03
Conversions .....	55	52

J. F. WRIGHT, *Home Missionary Secretary.*

**Missionary Volunteer Comparative Report for the Year Ending June 30, 1915-1916**

Letters written .....	603	924
Letters received .....	417	614
Missionary visits .....	2774	2443
Bible readings .....	748	936
Subscriptions taken .....	244	172
Papers sold .....	1021	2140
Papers mailed or given away .....	4693	5564
Books sold .....	244	560
Books loaned .....	166	267
Tracts sold .....	3365	103
Tracts given away .....	7907	2731
Hours of Christian help work .....	2275	4014
Articles of clothing given away .....	270	376
Number meals provided .....	449	1030
Treatments given .....		148
Signers to Temperance Pledge .....	64	43
Offerings to foreign missions .....	\$ 64 52	\$ 166 12
Offerings through Sabbath schools to missions .....		\$ 107 63
Offerings to home missions .....	\$ 36 91	\$ 73 15
Tithe paid to church treasurer .....		\$ 237 51
Conversions .....	43	50

J. F. WRIGHT, *State Secretary.*

**Home Missionary Report for Conference and Mission**

	Jan. 1 to Dec. 31, 1915				Jan. 1 to June 30, 1916		1 1/2 Years Total
	1st Quarter	2nd Quarter	3rd Quarter	4th Quarter	1st Quarter	2nd Quarter	
Number of churches .....	26	26	26	26	26	26	26
Membership .....	565	596	614	640	655	692	692
Number reporting .....	189	181	240	300	306	404	
Number holding missionary meetings .....		2	2	7	9	11	
Number chs. hold. 4th Sab. meetings .....		10	10	12	12	14	
Isolated members .....		15	15	15	15	16	
Number isolated members reporting .....			14	14	14	15	
Letters written .....	377	522	498	774	712	989	3872
Letters received .....	197	258	320	444	515	696	2430
Missionary visits .....	1626	1630	2718	2585	2900	2493	13952
Bible readings held .....	741	785	831	1117	1017	983	5474
Subscriptions .....	46	42	41	162	108	211	610
Papers sold .....	602	578	1046	2110	1796	2176	8308
Papers loaned .....	4774	6667	12233	13855	6859	8171	52565
Books sold .....	215	238	498	781	221	672	2625
Books loaned .....	193	520	190	456	470	377	2206
Tracts sold .....	73	17	32	220	83	352	777
Tracts given away .....	3133	2741	3022	9485	1708	2109	22198
Hours of Christian help work .....	1698	1689	1988	3181	3064	3886	15606
Articles of clothing given away .....	298	254	269	624	778	608	2831
Meals provided .....	673	491	914	1030	1416	1097	5621
Treatments given .....	143	170	308	888	432	550	2491
Signers to Temperance Pledge .....	13	30	22	28	55	21	169
Offerings .....	\$ 95 66	\$ 85 27	\$ 130 96	\$ 107 46	\$ 137 55	\$ 92 48	\$ 649 38
Conversions .....	24	31	18	36	15	37	154

J. F. WRIGHT, *Home Missionary Secretary.*

**Among the Churches**

Montgomery was the first place we stopped on our visit to the churches and isolated in the southern and southeastern part of the conference. We visited the churches of Montgomery, Ashford, Lynn Haven, and the colored church at Dothan, and the isolated at Linwood, Dothan, and Marianna.

We held quarterly meeting services at Montgomery, Ashford, and Lynn Haven. At Montgomery the communion service was held on our return trip. The church here is taking hold

of the missionary work in a commendable way. Every member who can is willing to do something. In the missionary meeting we held while there not one said no when asked to do anything. We hope this spirit for work will get hold of all our people.

At Dothan Elder Buckner and Brother Blackwood are holding a tent meeting. They have been hindered very much by the rain. The night we were present about sixty were out. Through the week the attendance is about sixty-five, and on Sunday nights about one hundred twenty-five. The prospect is good for fruit for the kingdom.

A. L. MILLER.

## Comparative Report Twenty-Cent-a-Week Fund

Church	CONFERENCE							
	Amount 1913	Per Capita	Amount 1914	Per Capita	Amount 1915	Per Capita	Amt. 1916-6mos.	Per Cap
Ashford	\$ 131 29	\$ .21	\$ 35 22	\$ .05	\$ 35 24	\$ .05	\$ 6 77	\$ .02
Birmingham	515 58	.23	526 07	.16	1039 48	.32	455 23	.24
Borden Springs	51 11	.10	119 58	.05	49 85	.02	14 22	.01
Carbon Hill	31 13	.06	35 14	.08	32 28	.08	19 11	.08
Citronelle	53 71	.13	46 76	.23	78 10	.08	6 93	.03
Conference Church	173 47	.30	91 61	.04	132 26	.09	69 92	.18
Elkwood	18 45	.03	60 91	.04	52 23	.03	22 35	.03
Gadsden	19 95	.05	28 81	.11	38 99	.05	14 68	.04
Individuals			362 09		149 74		22 53	
Long Island	71 67	.10	90 03	.08	108 75	.09	47 88	.10
Lynn Haven			22 92	.04	41 86	.07	9 04	.03
Marlow	113 63	.11	134 57	.05	117 47	.04	13 69	.02
Mobile	164 90	.16	298 50	.16	369 87	.20	126 22	.14
Montgomery	65 52	.31	145 54	.25	163 55	.29	51 04	.09
Santa Rosa	4 83		13 73	.01	7 60	.01	3 60	.01
Sheffield	35 56	.05	39 49	.04	127 50	.12	13 09	.03
Silverhill							47 28	.12
Stapleton	14 22	.05	11 43	.02	8 75	.02	5 00	.03
Rockford	8 55	.03						
Totals	\$1473 57	\$ .12	\$2062 40	\$ .10	\$2522 12	\$ .12	\$ 948 58	\$ .10

Church	MISSION							
	\$	\$	\$	\$	\$	\$	\$	\$
Bessemer							\$ 23 87	\$ .06
Birmingham	31 08		57 40	.03	120 50	.06	71 47	.07
Decatur	25 93		19 99	.05	16 00	.04	4 75	.02
Dothan	42 29		64 04	.07	46 40	.05	25 94	.05
Huntsville	17 17		35 68	.03	110 14	.09	42 71	.08
Individuals	28 95		2 65		44 84		6 00	
Mobile	15 51		47 89	.04	55 93	.05	20 23	.04
Montgomery	56 73		103 85	.06	133 43	.07	52 30	.06
Oakwood	79 88		248 11	.09	318 65	.12	139 57	.10
Pensacola	44 32		62 34	.03	48 44	.03	29 34	.03
Sylacauga	18 06		22 08	.02	9 79	.01	8 31	.01
Brewton	1 96							
Totals	\$ 361 88	\$	\$ 664 03	\$ .05	\$ 904 12	\$ .07	\$ 424 49	\$ .06
Grand Totals	\$1835 45	\$	\$2726 43	\$ .07½	\$3426 24	\$ .09½	\$1373 07	\$ .08

O. R. GODSMARK, Treasurer.

## Sabbath School Report for Year Ending June 30, 1916

School	CONFERENCE							
	Memb	AvAtt	13thSabOff	TotalOff	1915	PerfectAtt	Gain	Loss
Birmingham	74	57	\$ 121 21	\$ 617 77	\$ 339 07	14	\$ 278 70	\$
Borden Springs	46	39	3 94	22 64	23 96	4		1 32
Cool Springs	10	8	2 07	21 63	28 76			7 13
Elkwood	31	23	10 19	38 25	36 35	3	1 90	
Fairhope	10	9	9 88	34 62	44 09			9 47
Gadsden	9	8	3 31	19 35	25 82	6		6 47
Long Island No. 1	17	14	6 97	28 41	21 33	7	7 08	
Long Island No. 2	10	10	9 79	32 21	16 06		16 15	
Lynn Haven	7	6	9 52	19 63	14 23		5 40	
Montgomery	16	11	11 07	78 34	67 38	3	10 96	
Mobile	32	28	116 65	241 24	204 16	20	37 08	
Red Level	25	19	8 12	22 64	29 05			6 41
Rockford	7	7	78	6 41	10 65			4 24
Stapleton	12	10	3 47	10 18	9 37	3	81	
Silverhill	17	15	11 91	71 04	73 88	6		2 84
Sheffield	16	13	12 48	35 44	25 86	1	9 58	
Summerdale	13	10	3 27	21 98	15 88		6 10	
South Port, Fla.	13	10	26	3 58			3 58	
Anniston	11	11	53	6 88			6 88	
Home Schools	31		17 25	113 36	88 13		25 23	
Miscellaneous			3 41	12 82	96 45			83 63
Totals	407	308	\$ 366 08	\$1458 42	\$1170 48	67	\$ 409 45	\$ 121 51



	MISSION							
Birmingham	49	32	\$ 15 16	\$ 100 51	\$ 50 22	12	\$ 50 29	\$
Bessemer	17	7	17 51	42 00	1 01	3	40 99	
Dothan	30	22	6 38	38 40	63 52			25 12
Huntsville	23	19	9 67	67 72	39 66	7	28 06	
Montgomery	45	37	25 59	73 52	84 57	16		11 05
Mobile	29	18	2 73	36 16	22 54	13	13 62	
Oakwood	114	101	99 55	233 61	146 09	66	87 52	
Pensacola	39	24	5 64	46 85	28 98	15	17 87	
Sylacauga	15	9	67	4 03	6 02			1 99
Sycamore	7	7		1 35			1 35	
Home Schools	8	7	76	14 78	8 18		6 60	
Camp-meeting				26 62	8 00		18 62	
<b>Totals</b>	<b>376</b>	<b>283</b>	<b>\$ 183 66</b>	<b>\$ 685 55</b>	<b>\$ 458 79</b>	<b>132</b>	<b>\$ 264 92</b>	<b>\$ 38 16</b>
<b>Grand Totals</b>	<b>783</b>	<b>591</b>	<b>\$ 549 74</b>	<b>\$2143 97</b>	<b>\$1629 27</b>	<b>199</b>	<b>\$ 674 37</b>	<b>\$ 159 67</b>

The baptisms for the white schools number forty; that is two more than last year. For the colored schools eighteen were reported. Last year they had forty-four.

The total offerings show an increase of \$514.70. The white schools made an increase of \$287.94, and the colored, \$226.76. Last year the increase for the white schools was only \$74.65, while the increase for the colored schools was just sixty-two cents.

Our thirteenth-Sabbath offering is \$82.42 more than last year, the white schools showing an increase in this of \$57.63, and the colored, \$24.79.

HELEN M. KEATE, *State Sabbath School Secretary.*

Comparative Report of Tithe

Church	CONFERENCE						Memb.1916
	1912	1913	1914	1915	6mos.-1916		
Ashford	\$ 27 67	\$ 357 34	\$ 151 60	\$ 169 89	\$ 9 82	15	
Birmingham	727 32	1495 50	1790 39	2014 84	846 96	72	
Borden Springs	115 73	158 54	337 33	158 98	56 88	40	
Carbon Hill		36 95	181 15	140 80	87 13	9	
Citronelle	59 30	82 35	98 09	148 79	78 41	10	
Conference Church	463 20	586 07	281 92	297 49	273 22	15	
Elkwood	65 66	92 45	226 51	79 93	33 28	32	
Gadsden	85 51	69 20	56 35	72 83	53 86	13	
Individuals	612 71	70 16	937 05	754 66	218 90		
Long Island	327 64	348 99	263 23	241 40	107 06	18	
Lynn Haven			65 80	149 55	156 49	11	
Marlow	589 77	157 20	355 39	270 78	63 00	24	
Mobile	238 17	884 06	800 83	905 07	465 27	35	
Montgomery	184 80	177 70	215 80	364 73	458 76	21	
Santa Rosa		21 79	136 34	33 38	41 56	10	
Sheffield	166 83	136 25	170 82	95 37	67 78	20	
Silverhill					136 04	15	
Stapleton		13 90	15 49	64 61	30 00	7	
Wayside	105 72	151 52					
<b>Totals</b>	<b>\$3770 03</b>	<b>\$4839 97</b>	<b>\$6084 09</b>	<b>\$5963 10</b>	<b>\$ 184 42</b>	<b>375</b>	

	MISSION					
	\$	\$	\$	\$	\$	
Bessemer					\$ 70 64	
Birmingham		318 83	354 51	290 37	197 55	40
Decatur		270 75	114 96	36 08	13 93	9
Dothan		129 78	157 07	150 06	79 42	20
Huntsville		56 94	261 08	246 28	111 10	20
Individuals		31 36	59 24	57 81		
Mobile		47 99	88 17	138 46	54 56	20
Montgomery		336 76	253 49	230 68	143 32	35
Oakwood		100 00	259 77	1314 92	280 90	56
Pensacola		322 09	198 81	168 85	103 30	40
Sylacauga		72 24	54 26	50 94	24 46	25
Gadsden		28 62	14 97	5 80		
Brewton		13 05				
Anniston		5 41				
<b>Totals</b>	<b>\$</b>	<b>\$1733 82</b>	<b>\$1716 33</b>	<b>\$2590 25</b>	<b>\$1079 18</b>	<b>265</b>
<b>Grand Totals</b>	<b>\$</b>	<b>\$6573 79</b>	<b>\$7800 42</b>	<b>\$8553 35</b>	<b>\$4263 60</b>	<b>640</b>

**Colporteur Sales for Six Months of 1916**

Colporteur	Hrs	Total Value	Val per Hr	Total Del
M E Whatley	534	\$ 684 15	\$ 1 31	\$ 76 50
Robert Cook	782	610 55	78	37 50
Quinnie Tew	700	604 75	86	117 00
J E Foley	397	554 40	1 42	263 00
M L Ivory	871	553 35	55	16 00
E C Widgery	508	414 60	82	134 00
Carl Holland	256	362 85	1 42	99 00
N H Waters	255	348 70	1 37	11 50
S S Guilford	196	310 80	1 60	18 00
H L Edwards	289	306 25	1 05	33 00
Thomas Goodman	653	256 80	40	37 00
U Bracy	113	233 75	2 08	
B D Crawford	194	204 00	1 04	
H A Lynd	138	165 85	1 21	76 50
Luther Miller	126	13 956	1 01	5 50
Irregular	34	50 00	1 44	40 00
<b>Totals</b>	<b>6056</b>	<b>\$5797 75</b>		<b>\$ 964 50</b>
Helps Sold				108 60
Magazines Sold				749 90
<b>Grand Total</b>				<b>\$1823 00</b>

**COMPARATIVE SALES**

	Orders	Deliveries
First six months of 1916	\$5797 75	\$1823 00
First six months of 1915	5381 65	1533 85
<b>Gain</b>	<b>\$ 416 10</b>	<b>\$ 289 15</b>

We are very glad indeed to report a gain for the first six months, although it is small. Had all been faithful I am sure this would have been many times what it is, but the Lord is

**God's Light-Bearer**

The church is the light of the world. Especially is this true at the time when "darkness covers the earth, and gross darkness the people." It stands as God's divinely appointed agency for the uplift of fallen humanity, the salvation of lost mankind. The church has been organized for service, holy service, and its great mission is that of carrying the gospel to the world. Today the special burden of its work is that of warning all the world in this present generation of the soon-coming Saviour. But the church is composed of members, and each one who has taken the name of Christ is to be a faithful witness, showing forth the glory of God. The Christian is to become a center of holy influence, a soul-winner for the kingdom.

In ancient times God delivered Israel from Egyptian bondage, thus separating them from the world that they might do a special work. He committed to them a sacred trust. They were made the depository of his law. To them were given the oracles of heaven, and it was the design of God that through them a knowledge of himself should be preserved, that through them the light of the gospel would shine forth to the nations around, calling them to turn from their idolatry to the worship of the true and living God. Had Israel been true, faithful, and loyal to this sacred trust, they would have become a mighty power for good in the world. But they failed; they broke their covenant with God.

Now God has called the church in this generation, as he called ancient Israel, to stand forth as a light to the world. He likewise has made it the depository of his law. To it has been committed the sacred trust of giving to the world the "Three Angels' Messages," and the prophecies for our time. To all those who accept and who have accepted this message, Christ says

good and we have six months of the year yet before us. Who will add his name to the list and help us make the next six months the best of the year? The present average per hour is the best that we have ever made, and this gain has been made with a smaller number of workers in the field. It is our earnest prayer that some who read this report will be moved to give themselves to this great work.

M. L. WILSON, *Field Secretary.*

**Report of School Work**  
**WHITE SCHOOLS**

School	Teacher	Enrolment	Boys	Girls	Grade	Schl Trm. Mos.	Fin-ished 8th Grade
Birmingham, Miss A. Foster		20	5	15	1-8	9	3
Borden Springs, Miss Sylvia Gardner		22	9	13	1-5	6	
Red Level, M. E. Whatley and Mrs. C. G. Leitzman		15	7	8	1-10	9	
Elkwood, Ora Waters		16	12	4	1-6	6	
Oakwood, Miss Valah Dillen		11	4	7	1-8	9	3
Long Island, Miss Jessie Lewis		11	7	4	1-5	6	
Rockford, Mrs. A. Broiles		6	3	3	1-6	9	
<b>Total</b>		<b>101</b>					
<b>MISSION SCHOOLS</b>							
Dothan, Agnes Blackwood		64	26	38	1-5	8	
Oakwood, Miss B. Bartholomew		73	33	40	1-5	8	
Sylacauga, S. P. Robinson		13	5	8	1-6	6	
Colored		150					
White		101					
<b>Total</b>		<b>251</b>					

J. F. WRIGHT, *Educational Secretary.*

plainly, "Ye are the light of the world." "He depends upon the church for the forwarding of his work, and he expects them to do their work as intelligent beings." Vol. VI, p. 432.

Dear brethren and sisters, how are we treating the sacred trust committed to us of being God's light-bearers? We read from the servant of the Lord as follows: "In a special sense Seventh-day Adventists have been set in the world as watchmen and light-bearers. To them has been intrusted the last warning for a perishing world. . . . There is no other work of so great importance. They are to allow nothing else to absorb their attention." Vol. IX, page 19. Now, is our light shining forth as it ought to shine in this solemn hour of the world's history, or are some hiding it under a bushel? Are we as earnest in missionary work among our neighbors and friends as we should be? In these perilous times, do those whom we meet daily see by the lives we live and the work we do, that we expect the Saviour to come soon? These are solemn questions. How will you answer them? God is depending upon you. If you fail him, what then?

Much is being said today about "preparedness." It is a live question among the nations. Surely, is it not high time that we as Christians prepare for more efficient, consecrated service, and that the church prepare to meet her God? It would be a crime to fail as did Israel of old. May God help us to fully awaken, to sense the times in which we live, and place ourselves a living sacrifice on the altar of service, letting our light shine forth that the way of some poor, benighted, sin-sick soul may be lighted to the foot of the cross ere it is too late. Not far from this the "Well done" will be spoken to those who have been faithful in going from home to home seeking to save the lost.

J. F. WRIGHT.

# Louisiana Conference

Sunset Table, Standard Time.  
Friday, August 11

East 6:42

West 7:06

## News Items

Brother and Sister R. B. Stafford passed through New Orleans recently, returning from their field of labor in Peru.

Lucy McDonald, who is now engaged in Bible work in Shreveport, writes of the loss of her mother, Mrs. G. A. McDonald, June 14, 1916.

## Sabbath School Report for Quarter Ending June 30, 1916

School	Mem.	Av. Att.	Miss.	13th Sab.	Avr. p. Mem.
Alexandria	18	16	\$19 83	\$ 2 83	\$ 1 10
Arcadia	20	17	2 40	60	12
DeRidder	15	10	7 25	25	58
Evangeline	15	7	4 30	1 30	29
Hobart	24	19	25 00	3 52	1 04
Hammond	26	21	30 31	6 40	1 16
Lake Charles	34	24	19 31	3 79	57
Lena Station	11	8	3 56	1 00	32
Mansfield	21	17	22 87	3 30	1 09
Natalbany	9	8	76	08	08
New Orleans	73	65	144 08	36 55	1 97
New Orleans No. 2	100	70	24 72	4 00	24
Newellton No. 2	14	11	1 40	10	10
Natalbany No. 2	10	7	70	07	07
Ringgold	14	11	5 35	1 40	38
Shreveport	58	40	50 34	15 67	87
Shreveport No. 2	34	18	15 11	1 56	44
Sugartown	21	17	6 60	1 54	31
Welsh	29	17	13 92	1 00	48
Home Department	51	51	40 89	7 85	80
<b>Totals</b>	<b>597</b>	<b>454</b>	<b>\$438 70</b>	<b>\$92 56</b>	<b>\$ 74</b>

Have you noticed how the articles in the August *Watchman* ring with the message? This is a message number. When reading this good number notice particularly how Elders Wilkinson and Haynes, and Dr. Magan weave the message into their articles. This is characteristic of *The Watchman* and makes it a strong soul-winning journal.

## Colporteurs' Report, Week Ending July 22, 1916

ALABAMA CONFERENCE						
Book	Hrs.	Ords.	Value	Helps	Total	Deliv.
J E Foley	38	23	\$72 00	\$ 2 40	\$74 40	\$ 6 00
Carl Holland	45	21	65 00	2 60	67 60	3 00
Luther Miller	25	10	38 00	40	38 40	
R McAllister	8			75	75	3 00
F M Reiber	40	14	47 00	3 50	50 50	
Q Tew	31	13	42 00		42 00	
N H Waters	37	27	40 50	2 10	42 60	1 50
M E Whatley D&R	15	2	6 00	35	6 35	16 00
<b>Totals (Agts. 8)</b>	<b>240</b>	<b>110</b>	<b>\$310 50</b>	<b>\$12 10</b>	<b>\$322 60</b>	<b>\$29 50</b>

LOUISIANA CONFERENCE						
Book	Hrs.	Ords.	Value	Helps	Total	Deliv.
J B Hardy*	26	45	\$154 00	\$	\$154 00	\$
R R Coble*	46	12	39 00	9 00	48 00	95 00
A B Cheek*	49	21	89 00		89 00	
F W Schmehl	34	25	84 00		84 00	
Bibles			45 10		45 10	3 50
<b>Totals (Agts. 4)</b>	<b>155</b>	<b>103</b>	<b>\$411 10</b>	<b>\$ 9 00</b>	<b>\$420 10</b>	<b>\$98 50</b>

## KENTUCKY CONFERENCE

R F Hickman	BR	31	40	\$122 00	\$ 2 25	\$124 25	\$
J B Reichenbach*	BR	70	32	101 00		101 00	
D E Lindsey	D&R	41	22	71 00	1 00	72 00	
Jeff Hickman	BR	30	39	120 00	1 75	121 75	29 00
J H Clark	BF	28	33	61 50		61 50	
Elsie Tatman*	CK	82	82	130 00	3 10	133 10	
E Kuebel*	CK	72	45	71 10	1 75	72 85	
B E Wagner	D&R	35	23	50 00	3 50	53 50	
F Pierce	BR	27	15	45 00		45 00	
R W Harris	BR	10	4	18 00		18 00	
A Schroader	BR	27	5	15 00		15 00	
C Emanuel	HM	38	8	16 00	2 50	18 50	
W B Wilson	BR	20					48 00
L Bowles	BR	45			15 75	15 75	139 00
F L Harrison	BR	35	17	54 00	50	54 50	
Bibles				23 15		23 15	36 80

Totals (Agts.15) 591 365 \$897 75 \$32 10 \$929 85 \$252 80

## MISSISSIPPI CONFERENCE

Drue Bowen	BR	39	16	\$48 00	\$ 2 10	\$50 10	\$
J M Boyce*	BR&BF	15	10	20 00		20 00	72 50
Melvin Coltrin	BR	25	12	38 00	3 15	41 15	
J L Cooper	BR	44					66 00
Elmer Chastain	BR	10	13	47 00	1 00	48 00	
Hattie Jacobs	HM	1	1	2 00		2 00	2 00
A Johnson	D&R, HM	33	36	77 00	2 80	79 80	
Mrs A H Kelly					12 25	12 25	
Mattie Lee	HM	15	4	9 00		9 00	6 00
L McElroy	P&F, HM	25	2	4 00	1 40	5 40	46 50
V Smith*	D&R, BR	49	31	95 00	6 40	101 40	
Percy Stewart	BR	20	14	43 00	60	43 60	
W W Tinsley	BR	35	12	36 00	1 30	37 30	
R W Tinsley	BR	29	9	27 00	3 30	30 30	
J Weathington	HM	15	20	56 75	1 40	58 15	
Annie Watts	HM	20	14	29 70	70	30 40	
Bibles				10 85		10 85	

Totals (Agts.16) 374 194 \$543 30 \$36 40 \$579 70 \$193 00

## TENNESSEE RIVER CONFERENCE

Jesse Allen	BR	43	34	\$110 00	\$ 2 85	\$112 85	\$
Barnes Broiles	BR	42	20	65 00	4 30	69 30	
E B Edwards	BR	23	10	34 00	2 15	36 15	
R H Hazelton	GC	45	15	33 00	2 40	35 40	
W J Keele	D&R	36			21 00	21 00	242 00
W McEachern	BR	33	10	38 00	1 20	39 20	33 00
P Stuyvesant	BR	34	17	58 00	85	58 85	
W E Templeton	BR	31	11	37 00	2 65	39 65	
Bibles				16 00		16 00	

Totals (Agts. 8) 287 117 \$391 00 \$37 40 \$428 40 \$275 00

G'd Totals (A. 51) 1647 889 \$2553 65 \$127 00 \$2680 65 \$848 80

## Summary from January 1 to Date

Conference	Orders	Helps	Deliveries
Alabama Conference	\$6401 95	\$ 147 70	\$1020 25
Kentucky Conference	10197 75	301 52	4364 90
Louisiana Conference	5347 05	44 80	842 10
Mississippi Conference	18313 00	794 90	1254 90
Tenn. River Conference	7675 95	546 30	1482 51

Totals \$47935 70 \$1835 22 \$8964 66

A man should never be ashamed to say he has been in the wrong, which is but saying in other words that he is wiser today than he was yesterday.

\* Two Weeks.

## SOUTHERN UNION WORKER

Published weekly (fifty numbers) by

THE SOUTHERN UNION CONFERENCE

EMBRACING

Tennessee River, Kentucky, Alabama, Mississippi, and Louisiana  
Conferences

2014 23rd Ave. N., Nashville, Tenn.

SUBSCRIPTION PRICE : : : FIFTY CENTS A YEAR

Printed by the Southern Publishing Association  
of Seventh-day Adventists

Entered as second-class matter, May 19, 1910, at the post-office at  
Nashville, Tenn., under the Act of March 3, 1879.

## Tennessee River Conference

Sunset Table. Standard Time.

East 6: 19

Friday, August 11

West 6: 58

FOR SALE: Five acres good land partly wooded, with house and barn, across the road from a thriving rural school near Lawrenceburg, Tenn. Splendid opportunity for all kinds of missionary work. Price \$400 cash. Address, Geo. E. Crawford, 1801 Lawrence Ave., Beloit, Wis.

J. A. Poteete of Leach, Tenn., can use to advantage our literature, and would like a continuous supply of tracts and papers.

### In the Field

Since my last report I have made several trips. Some time was spent in Madison County with Brother Templeton, and the Lord greatly blessed us in our work. I will relate just one of our experiences. Late one afternoon we began to inquire for a place to stop overnight, but could not find one. We finally heard of one on ahead. It grew dark, but we walked on. About nine o'clock we came to a house and the kind man took us in. We also took his order for a \$4 book. I believe God led us there, for if we had not stopped there overnight, we would not have seen the man at all. This shows how God is leading his workers. While in this country I spent some time with Brother Stuyvesant, a student from the Madison School who is doing good work.

From there I went to Fulton, Ky., and spent some time with Brethren Keele and Allen. After trying the work in the tobacco section, Brother Allen and I decided to go to the cotton section. The Lord greatly blessed Brother Allen there. Later his brother joined him, also Brother Willie McEachern and Brother W. D. Wade. Brother Wade was called home on account of sickness, but he reports that his boy is much better now. We hope that he will be in the field again by the time this reaches the readers. In all I spent a little over a week with these workers, and they all seem full of courage.

I spent two days at Fountain Head. Brother E. Edwards from this church has decided to enter the canvassing work. He is now in Fayette County and is experiencing many blessings from the Lord. I am sure he will make a good worker and that the Fountain Head church is praying for his success.

"In the future men in the common walks of life will be impressed by the Spirit of the Lord to leave their ordinary employment and go forth to proclaim the last message of mercy." Vol. VII, p. 27. I feel that the time has come when this will be fulfilled, and that the Lord will impress every one who has the truth in his heart to take up the work in some line.

"Heavenly angels have long been waiting for human agents—the members of our churches—to cooperate with them in the great work to be done. They are waiting for you. So vast is the field, so comprehensive the design, that every sanctified heart will be pressed into service as an instrument of divine power." Vol. IX, p. 47.

I trust that all will stop and look into their hearts when they read these words of God, and ask themselves if their hearts are sanctified. Are you doing all you can to hasten the work in the earth, or, on the other hand, are you not enjoying the blessings of God? Is there a longing for the work, and some petty thing keeping you out? Look into this matter, and if the Lord is calling you by his Holy Spirit, send back the answer clear and plain, "Here am I; send me," and receive that peace and joy that God has in store for his people.

M. WHEELER.

## Pertaining to the Union

### Union Conference Directory

S. E. WIGHT, President.

G. H. CURTIS, Secretary-Treasurer and Auditor.

J. W. DAVIS, Union Missionary Secretary.

LYNN H. WOOD, Educational and Y. P. M. V. Secretary.

OFFICE ADDRESS, 2014 23rd Ave. N., Nashville, Tenn.

### Camp-Meeting Dates

Tennessee River, Nashville ..... Aug. 3-13  
Alabama, Montgomery ..... Aug. 10-20  
Kentucky, Bowling Green ..... Aug. 17-27  
Mississippi (Colored), Hattiesburg ..... Aug. 24-Sept. 3  
Alabama (Colored), Montgomery ..... Aug. 24-Sept. 3  
Rural School Institute, Madison, Tenn. .... Aug. 31-Sept. 4

### News Items

We are glad to report that Elder Wight is gaining, and is getting along as well as could be expected. He is still at the Madison Sanitarium, where he is receiving good care. He will not be able to attend any of the camp-meetings in the union this year, but the General Conference has been very kind in supplying us with help for our meetings. Elders Meade MacGuire and Charles Thompson will be in attendance at the Tennessee River camp-meeting.

Prof. Lynn H. Wood and Brother J. W. Davis have been away from the office for some time attending the Louisiana and Mississippi camp-meetings.

Prof. A. N. Atteberry and Brother G. H. Curtis spent last week visiting the churches in the Kentucky Conference. They stopped at Bowling Green, Louisville, and other places, visiting both white and colored churches in the interest of the educational work and our new school to be located at Ooltewah, Tenn.

### The Best Ten Cents' Worth Yet

In sending us a subscription for a friend the other day, one of our regular subscribers said:

"The articles from Dr. P. T. Magan and Elder C. B. Haynes in a single issue of *The Watchman* are worth the subscription price."

We are glad to inform all our friends that among the many good selections in the August *Watchman* are two of the best articles yet received from these two writers. The August *Watchman* contains the best ten cents' worth of reading we can offer.

Silence is very often the softest kind of an answer.