

Far Eastern Division Outlook

VOL. 15

SHANGHAI, CHINA, APRIL, 1926

NO. 4

An S. O. S. Call for You

I. H. EVANS

There's a call on the line from a people afar—
 Ringing, ringing, ringing!
A distressing, faint call as from farthest star—
 Ringing, ringing, ringing!
They are calling for help, saying, "Lost! Lost! Lost!"
 Ringing, ringing, ringing!
They are begging for help, not regarding the cost—
 Ringing, ringing, ringing!

They are speaking your name in this call of distress—
 Ringing, ringing, ringing!
They know not the Christ whom they hear you profess—
 Ringing, ringing, ringing!
The call on the line is a "hurry-up call"—
 Ringing, ringing, ringing!
The great wreck is complete, not a soul saved at all—
 Ringing, ringing, ringing!

Without help they are lost, and their doom is decreed—
 Ringing, ringing, ringing!
Two thousand an hour fall in death, so 'tis said—
 Ringing, ringing, ringing!
List! they're calling for you from Sinim's far land—
 Ringing, ringing, ringing!
They are praying that you will lend them your hand—
 Ringing, ringing, ringing!

"Save our Souls!" is the cry, "Must we perish and die
 (Ringing, ringing, ringing!)
Without Christ? without God? Is your faith but a lie?"
 Ringing, ringing, ringing!
They are calling for you; each wail is the same—
 Ringing, ringing, ringing!
"Come yourself and come now! O, come in Christ's name!"
 Ringing, ringing, ringing!

*On Train—Hankow-Peking
April 16, 1925*

Statistical Reports=1925

An Analysis of the Statistical Reports for 1925

THE various "Tables" of denominational statistics for the Far Eastern Division, covering the work of the year 1925, are summed up in the double-page Table "O" appearing on pages 10 and 11 (center) of this issue of the OUTLOOK. In Table "O" are given the leading facts concerning the force of laborers, the present status of the work, the tithes, the Sabbath schools and their offerings, and the church schools as well. These facts are grouped by Unions, the workings and net results for the year in every one of the provincial missions being set forth in detail. In this connection the gains and the percentage of gain during the four-year period of 1922 to 1925 are shown.

Church Membership Gains

During the past year the steady advance of former years was maintained in church membership gains, totaling 2,163 for the year. During the year 1924 the net gain was 1,999. In making comparisons between the past two years, however, we must remember that the transfer of the East Siberian Union from the Far Eastern Division to the European Division, effective from the first day of January, 1925, automatically lessened our Far Eastern church membership by a total of 490, which loss had to be made up in its entirety through the winning of a like number of new believers, before we could begin counting any net gains at all for the year under review. In actuality, there has been during the year 1925 in the Far Eastern Division a net total of 2,653, including the 490 won to replace those transferred to a sister Division. The Lord has given us the best year in soul-winning we have ever had in the Far East.

The membership chart given in Table "B" sets forth a number of details for study and reference, including the membership reported in former years. During the past quadrennium the number of baptized believers has increased by 7,267, a gain of 74%.

Church Membership Gains by Individual Unions

The total net gains in church membership during 1925 and during the four-year period 1921-25, have been realized in varying degrees from the ten Union missions in our territory as follows:

<i>Name of Union</i>	<i>Net Gains in Church Membership, Yr. 1925</i>	<i>Net Gains in Church Membership, 4-Yr. period, 1922-25</i>
Philippine Union	1,078	3,450
Chosen Union	118	491
Japan Union	35	161
Manchurian Union	43	118
Central China Union	278	542
North China Union	85	168
South China Union	104	321
West China Union	36	48
East China Union	412	784
Malaysian Union	442	1,275

Gains by Provincial Missions

In further analysis of gains in church membership, attention should be called to substantial advances in several of the provincial missions, notably the following:

<i>Name of Provincial Mission</i>	<i>Net Gains in Church Membership, Yr. 1925</i>	<i>Net Gains in Church Membership, 4-Yr. period, 1922-25</i>
Northern Luzon	291	667
East Visayan	225	615
West Visayan	488	1,582
Central Luzon	45	506
Southern Luzon	29	80
South Chosen	67	154
Central Chosen	21	134
Kansai	18	35
Fengtien	35	101
Honan	83	226
Hunan	51	127
Hupeh	83	139
Kiangsi	35	36
Shensi	26	14
Shantung	50	83
Chihli	35	85
Cantonese	52	119
Kwangsi	15	48
South Fukien	32	43
East Szechwan	17	20
West Szechwan	19	28
Anhwei	97	170
Kiangsu	238	475
South Chekiang	77	139
British North Borneo	12	38
East Java	51	138
Malay States	46	109
Siam	26	67
Singapore	21	89
South Sumatra	15	51
West Java	165	413
Celebes	106	286

In the list of gains by provinces, we have included some where the figures are relatively small, but in which territories the difficulties have been many. God is at work in places where difficulties are multiplying, as is evidenced by the record of gains in the China field. Never has China had so fruitful a year in soul-winning as during 1925, when a total of 958 were added to the church membership of the previous year for Unions in China and Manchuria.

The Sabbath School Department

A summary of Sabbath school statistics for the Far Eastern Division appears on the lower half of page 4. The total membership, 24,462, is 7,455 in excess of the baptized church membership. This gives ground for large expectations in the winning of many hundreds of the Sabbath school membership as regular members of our churches. The Sabbath school gifts for missions have already reached the substantial sum of about \$27,000 (gold) per annum.

The Publishing and Home Missionary Departments

For detailed information on the results reported from publishing department activities, see Tables "C" and "D" and also the Language Table. These are self-explanatory, and reveal an increase in every Union.

Educational and Young People's Work

Two hundred and one schools,—primary, intermediate, academic,—with 432 teachers and 8,349 pupils, bring educational benefits to a considerable portion of our constituency, although less than half of our youth are as yet served thus. The statistics revealing the present status of the schools appear in the two double-page tables shown on pages 10-11 and 8-9. In Table "O" church school statistics are given in the last two columns; on pages 8-9 educational statistics are given in columns 36-48. Young People's Missionary Volunteer statistics are given on pages 8-9 in columns 49-53. Detailed statistics year by year on educational and missionary volunteer work are given in the last few columns of Tables "F" "G" "H" "J" "K" "M".

Progress by Unions

Certain of the statistical tables set forth with considerable detail the progress year by year in various Union fields—Table "G" for Chosen; Table "H" for South China; Table "J" for Malaysia; Table "K" for Manchuria; Table "M" for

Philippines. Owing to the difficulty of segregating statistics for Mandarin China during years when the work was conducted under one central organization, Table "F" has been prepared to show progress year by year throughout all China, including the three outer provinces of Manchuria.

The figures given in Table "J" for Malaysia, Table "M" for the Philippines, Table "K" for Manchuria, and Table "F" for China, bear silent witness to many steady gains.

Tithes and Offerings

Detailed summaries of tithes and offerings appear in Tables "E" and "L".

The Need of Help from Heaven

The chart on page 5 should cause us to seek God for special blessing and help in the winning of souls; for from this chart it is apparent that scarce a tithe of what should be accomplished by our working force is being attained year by year. The low average of about one new believer a year (net increase) for each mission worker, maintained for many years, is now being slowly changed, and this is a source of satisfaction and of thanksgiving to God. But the needs of the millions yet to be warned and brought into touch with present truth, constitute a tremendous appeal to God's children to labor as never before to gather many into the fold—
in this work we must have more and more of the help of Heaven.

Table B

MEMBERSHIP CHART --- FAR EASTERN DIVISION --- FOUR YRS. --- 1921 - 1925									
Name of Union Mission	BAPTIZED MEMBERSHIP					NUMBER OF WORKERS			
	Total Members Dec. 31 1925	Total Members Dec. 31 1924	Net Gain One yr. --1925	Total Members Dec. 31 1921	%Gain four-year period	Baptisms in yr 1925	Total Wkrs. Native & For'n 1925	Total foreign workers Dec. 31 1925	Total foreign workers Dec. 31 1921
Division							166	56	51
Philippines	6,374	5,296	1,078	2,924	118%	1,364	257	28	29
Chosen	1,637	1,519	118	1,146	43%	245	164	26	23
Japan	460	425	35	299	54%	64	53	22	18
Manchuria	245	202	43	127	88%	64	51	12	9
Central China	1,732	1,454	278	1,190	45%	311	242	40	29
North China	276	191	85	108	155%	80	52	13	8
South China	2,356	2,262	104	2,045	16%	176	286	34	34
West China	126	90	36	78	61%	37	32	12	14
East China	1,513	1,101	412	729	107%	415	176	22	25
Malaysia	1,944	1,502	442	669	190%	431	238	52	50
Sungari-Mongolia	334	312 490*	22 -490*	425*		104	29	4	
TOTALS Yr. 1925	17,007	14,844	2,163	9,740	74%	3,291	1,746	321	300
Totals Yr. 1924	14,844							283	
Totals Yr. 1923	12,845							289	
Totals Yr. 1922	10,954							288	
Totals Yr. 1921	9,740							300	

*East Siberian Union, now transferred to European Division

Far Eastern Division Language Table

At the close of 1925 the work of the Seventh-day Adventist denomination was being carried on in the Far Eastern Division in forty-eight languages and distinct dialects, as follows:

Thirty-one Languages in which Seventh-day Adventist literature is now published in the Far East

Amoyese (Hokkien)	Mandarin
Baba-Malay	Mongolian
Battak (Toba-Battak)	Nias
Bicol	Pampangan
Cantonese	Panayan (Ilongot)
Cebuan (Visayan)	Pangasinan
Dusun	Russian
Dutch	Shanghai
English	Siamese
Ibanag	Sundanese
Ilocano	Spanish
Japanese	Tagalog
Javanese	Tamil
Korean	Tibetan
Malay (Java)	Wenli
Malay (Arabic)	

Total 31

Seventeen additional Languages in which oral work is carried on in the Far East, with no denominational literature in the vernacular

Ambonese (Ambon and Ceram)
Angkola-Mandailing Battak (Sumatra)
Benguet-Igorot or Inibaloi (Philippines)
Bontoc-Igorot (Philippines)
Foochowese (served by Wenli)
Hakka (served by Wenli)
Hainanese (Hailam) (served by Wenli)
Kalinga (Philippines)
Lepanto-Igorot or Kankani (Philippines)
Timorese (Netherlands East Indies)
Tompakew (Celebes)
Tingian (Philippines)
Miao (served by Wenli)
Ningpo (China; served by Wenli)
Nosu (West China)
Swatowese—T'ie Chiu (served by Wenli)
Wenchowese (served by Wenli)

Total, 17

The Sabbath School Department



Report of the Far Eastern Division Sabbath School Department for the Year Ending Dec. 31, 1925.

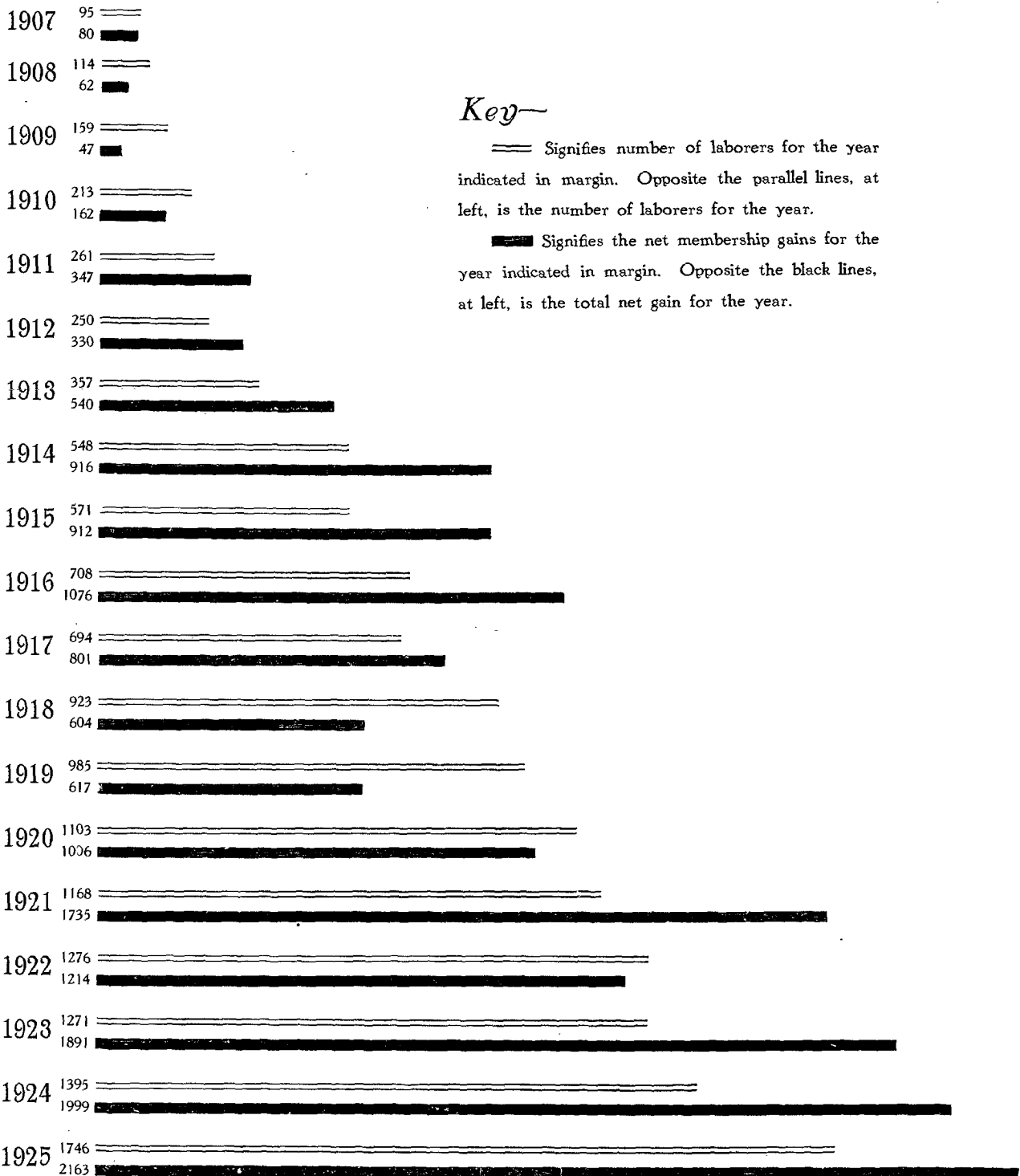
Conference or Mission	No. Schools	Membership	Average Attendance	Senior Division	Youth's Division	Primary Kindergarten	Cradle Roll	Twelve Sabbaths—Offering	13th Sabbath Offering	Offerings—Total
Central China	72	2702	2114	1911	446	253	1	1434.40	398.98	1833.38
Chosen	90	3867	2617	2160		1442	265	2647.06	323.99	2971.05
East China	78	3436	2647	2401	684	348	3	1949.62	347.65	2297.27
Japan	17	533	388	397	24	108	4	1560.90½	724.31½	2285.22
Malaysia	59	2029	1958	1285	324	420	5	4390.46	1749.78	6140.24
Manchuria	12	338	232	185	145	8		416.94	105.75	522.69
North China	9	416	374	254	126	32	4	392.69	74.96	467.65
Philippines	176	6520	5404	3932	1593	1195		5225.24½	1294.99½	6520.24
South China	91	3840	2521	1565	1240	417	23	1738.67½	410.95½	2149.63
Sungari-Mongolia	7	386	340	236	53	80	6	1129.02	221.66	1350.68
West China	11	395	308	229	87	70	9	462.76	85.57	548.33
Total	622	24462	18903	14555	4522	4373	320	21347.77½	5738.60½	27086.38

GAIN IN MEMBERSHIP—FAR EASTERN DIVISION

As compared with total laborers, both foreign and native



Against each year, from 1907 to 1925, the first number and the light line represent the total laborers in the Division, and the second number and the dark line represent the net gain in membership for the year



Key—

==== Signifies number of laborers for the year indicated in margin. Opposite the parallel lines, at left, is the number of laborers for the year.

■■■■ Signifies the net membership gains for the year indicated in margin. Opposite the black lines, at left, is the total net gain for the year.

In addition to the 2163 reported as net gain in membership during the year 1925, the loss of the 490 sustained through the transfer of East Siberian Union to the European Division has been fully met through the winning of 490, thus making an actual gain of 2653.

Unoccupied Fields in the Far East		Table A
NORTH CHINA UNION		Population
Shansi	- - - - -	11,080,827
CENTRAL CHINA UNION		
Kansu	- - - - -	5,927,997
WEST CHINA UNION		
Yunnan	- - - - -	9,839,180
Kweichow	- - - - -	11,216,400
MANCHURIAN UNION		
Heilungkiang	- - - - -	2,865,644
TIBET		6,430,000
CHINESE TURKESTAN		2,519,679
MONGOLIA		7,780,000
SOUTH CHINA UNION		
Macao	- - - - -	74,688
Annam	- - - - -	5,731,189
Cambodia	- - - - -	2,000,000
Cochin-China	- - - - -	3,795,613
Tongking, Laos	- - - - -	7,438,260
Hainan	- - - - -	1,500,000
Formosa	- - - - -	3,654,398
MALAYSIAN UNION		
Madoera	- - - - -	1,743,818
Banka and Billiton	- - - - -	222,723
Ternate (Moluccas and dependencies)	- - - - -	149,245
Dutch New Guinea	- - - - -	195,460
Dutch Timor and dependencies	- - - - -	1,146,660
Bali	- - - - -	947,233
Lombok	- - - - -	617,781
Portuguese East Indies (Portuguese Timor, etc.,)	- - - - -	377,815
Labuan	- - - - -	6,546
Brunei	- - - - -	60,000
TOTAL population unentered regions		87,299,048

NOTE: In several countries and provinces already entered our mission work touches less than one per cent of the people dwelling within the land; and any approximately correct estimate of unentered regions should include the greater portion of lands not named in this table, the aggregate population of which totals more than 500,000,000.

THE MOSLEM WORLD		Table M
NUMBER OF MOSLEMS IN THE FAR EAST		Estimated by Dr. Zwemer July, 1923
Borneo	- - - - -	162,500
Brunei	- - - - -	23,900
Sarawak	- - - - -	150,000
Straits Settlements	- - - - -	258,791
Federated Malay States	- - - - -	420,840
Protected Malay States	- - - - -	758,060
Siam	- - - - -	150,000
Portuguese East Indies	- - - - -	9,000
Dutch East Indies	- - - - -	36,000,000
French Indo-China	- - - - -	328,600
Philippines	- - - - -	586,999
China Proper	- - - - -	6,433,000
Dependencies of China	- - - - -	2,703,000
Total Moslems in Far East	- - - - -	47,984,690
NUMBER OF MOSLEMS IN OTHER LANDS		
India and Burma	- - - - -	70,385,469
North America	- - - - -	11,000
Central and South America	- - - - -	193,429
Australia	- - - - -	25,000
Polynesia -- Fiji	- - - - -	15,000
Europe (including Siberia)	- - - - -	17,769,957
Africa	- - - - -	59,444,397
Total Moslems in other lands	- - - - -	147,844,242
Moslems, World Total	- - - - -	195,828,932
Per cent of all Moslems in the Far East	- - - - -	24 1/3 %

Populations in the Far Eastern Division		Table N
(According to the latest official census taken in the various lands)		
EAST CHINA UNION		75,662,029
Anhui	- - - - -	19,832,665
Chekiang	- - - - -	22,043,300
Kiangsu	- - - - -	33,786,064
NORTH CHINA UNION		76,217,960
Weihaiwei	- - - - -	147,177
Chihli	- - - - -	34,186,711
Shansi	- - - - -	11,080,827
Shantung	- - - - -	30,803,246
CENTRAL CHINA UNION		126,282,787
Honan	- - - - -	30,831,909
Hunan	- - - - -	28,443,279
Hupei	- - - - -	27,167,244
Kiangsi	- - - - -	24,446,800
Shensi	- - - - -	9,466,668
Kansu	- - - - -	5,927,997
WEST CHINA UNION		70,838,390
Szechwan	- - - - -	49,782,810
Yunnan	- - - - -	9,839,180
Kweichow	- - - - -	11,216,400
MANCHURIAN UNION		22,083,434
Fengtien	- - - - -	12,824,779
Kirin	- - - - -	6,405,011
Heilungkiang	- - - - -	2,853,644
TIBET		6,430,000
CHINESE TURKESTAN		2,519,679
MONGOLIA		7,780,000
Inner Mongolia	- - - - -	6,743,000
Outer Mongolia	- - - - -	1,037,000
SOUTH CHINA UNION		87,403,111
Fukien	- - - - -	13,167,791
Kwangsi	- - - - -	12,268,335
Kwangtung	- - - - -	37,167,701
Macao	- - - - -	74,688
Annam	- - - - -	5,731,189
Cambodia	- - - - -	2,000,000
Cochin-China	- - - - -	3,795,613
Tongking, Laos	- - - - -	7,438,260
Hongkong	- - - - -	826,166
Hainan	- - - - -	1,500,000
Formosa	- - - - -	3,654,398
PHILIPPINE UNION		10,350,640
JAPAN UNION		59,736,704
CHOSON UNION		18,313,800
MALAYSIAN UNION		63,714,976
Java	- - - - -	33,240,353
Madoera (often included with Java)	- - - - -	1,743,818
Sumatra	- - - - -	6,075,267
Banka and Billiton	- - - - -	222,723
Dutch Borneo	- - - - -	1,626,001
Celebes (including Menado)	- - - - -	3,108,337
Amboina (including Ceram and dependencies)	- - - - -	277,966
Ternate (Moluccas and dependencies)	- - - - -	149,245
Dutch New Guinea	- - - - -	195,460
Dutch Timor & dependencies	- - - - -	1,146,660
Bali	- - - - -	947,233
Lombok	- - - - -	617,781
Portuguese East Indies (Portuguese Timor, etc.,)	- - - - -	377,815
British North Borneo	- - - - -	258,365
Sarawak	- - - - -	1,115,644
Labuan	- - - - -	6,546
Brunei	- - - - -	60,000
British Malaya (Straits, F. M. S., Unfed. M. G.)	- - - - -	3,332,603
Siam (including Bangkok)	- - - - -	9,223,179
Total Population Far Eastern Division		827,330,410
Total Population of World		1,748,000,000
Percentage of World's Population in the Far Eastern Division		36 2/3 %

TITHE — Far Eastern Division — 1925

All money in U. S. Gold.

Table E

Name of Union Mission	BAPTIZED MEMBERSHIP		1925 -- TITHE RECEIPTS			1925 -- PER CAPITA TITHE -- 1925			
	Total Members Dec. 31 1925	Total Members Dec. 31 1924	Foreign Tithe 1925	Native Tithe 1925	Total Tithe Foreign and Native 1925	Combined Foreign & Native 1925	Average Native Only 1925	Average Native Only 1924	Average Native Only 1923
Division			\$ 10,476.98		\$ 10,476.98				
Philippines	6,374	5,296	2,267.45	\$22,851.92	25,119.37	\$ 4.74	\$ 4.32	\$ 4.19	\$ 4.53
Chosen	1,637	1,519	2,577.32	4,429.80	7,007.12	4.61	3.03	2.96	2.82
Japan	460	425	1,802.21	5,642.29	7,444.50	17.52	12.64	14.36	15.17
Manchuria	245	202	939.53	666.08	1,605.61	7.95	3.43	3.95	4.11
Central China	1,732	1,454	2,847.45	2,927.40	5,774.85	3.97	2.05	1.94	1.79
North China	276	191	1,020.93	809.69	1,830.62	9.58	4.52	3.15	2.72
South China	2,366	2,262	2,800.25	3,597.85	6,398.10	2.83	1.60	1.58	1.50
West China	126	90	957.08	553.06	1,510.14	16.72	6.91	4.48	3.63
East China	1,513	1,101	2,556.21	3,066.04	5,622.25	5.11	2.82	2.79	2.08
Malaysia	1,944	1,502	5,124.00	15,401.00	20,525.00	13.67	10.60	10.52	10.70
Sungari-Mongolia	334	802*	687.02	2,445.71	3,132.73	10.04	7.84	5.45*	1.43*
TOTALS Yr. 1925	17,007	14,844	\$ 34,056.43	\$62,390.84	\$ 96,447.27	\$ 6.50	\$ 4.28	\$ 4.20	\$ 3.97
Totals Yr. 1924	14,844		29,722.50	52,713.82	82,436.32	6.42	4.20		
Totals Yr. 1923	12,845		26,348.80	42,339.35	68,688.15	6.27	3.97		
Totals Yr. 1922	10,954		23,642.72	35,302.08	58,944.80	6.05	3.74		
Totals Yr. 1921	9,740		24,899.51	32,600.89	57,500.40	7.46	4.23		
Totals Yr. 1920	7,705		15,703.07	33,168.83	46,871.90	7.28	4.95		
Totals Yr. 1919	6,699		14,197.84	23,966.37	38,164.21	6.27	3.94		
Totals Yr. 1918	6,028				28,809.34	6.15			

* East Siberian Union, now transferred to the European Division

OFFERINGS FOR MISSIONS ---- FAR EASTERN DIVISION ---- 1925

Table L

Name of Union	Baptized Membership		Total Offerings for Missions exclusive of Harvest Ingathering	Per Capita for Missions exclusive of H. I.	Total Offerings for Missions including Harvest Ingathering	Per Capita for Missions including Harvest Ingathering	Grand Total TITHES & OFFERINGS for year 1925	Per cent of Class I Budget Funds raised in field in the total tithes and offerings for missions
	Total Members Dec. 31 1925	Total Members Dec. 31 1924						
Division							\$ 10,476.98	
Philippines	6,374	5,296	\$ 8,253.38	\$ 1.56	\$ 11,229.13	\$ 2.12	36,348.50	28%
Chosen	1,637	1,519	4,389.66	2.89	4,389.66	2.89	11,396.78	13%
Japan	460	425	3,465.64	8.15	5,959.79	14.02	13,404.29	29%
Manchuria	245	202	967.21	4.79	1,237.27	6.13	2,842.88	15%
Central China	1,732	1,454	2,724.72	1.88	3,741.63	2.57	9,516.48	11%
North China	276	191	1,113.86	5.83	2,307.77	12.08	4,138.39	14%
South China	2,366	2,262	3,135.79	1.39	3,393.84	1.50	9,791.94	9%
West China	126	90	746.73	8.30	763.03	8.48	2,273.17	9%
East China	1,513	1,101	3,492.56	3.17	3,605.41	1.27	9,227.66	17%
Malaysia	1,944	1,502	7,049.31	4.69	18,710.27	12.46	39,235.27	30%
Sungari-Mongolia*	334	802*	1,270.60	4.07	1,290.73	4.14	4,423.46	22%
TOTALS Yr. 1925	17,007	14,844	\$ 36,609.46	\$ 2.47	\$ 56,628.53	\$ 3.82	\$ 153,076.80	21%
Totals Yr. 1924	14,844		27,517.74	2.14	49,959.43	3.89	132,247.99	21%
Totals Yr. 1923	12,845		29,419.76	2.68	45,506.97	4.15	114,195.12	18½%
Totals Yr. 1922	10,954		22,532.20	2.31	37,312.89	3.83	96,257.69	17 4/5%
Totals Yr. 1921	9,740		19,108.39	2.47	37,341.05	4.84	94,841.45	23%
Totals Yr. 1920	7,705		16,994.30	2.54	23,123.71	3.45	69,995.61	22%
Totals Yr. 1919	6,699		13,284.65	2.18	19,149.36	3.15	57,313.57	23½%
Totals Yr. 1918	6,028		11,254.54					

* Sungari-Mongolia was a part of the East Siberian Union in 1924, the transfer of East Siberia proper to the European Division taking place Jan. 1, 1925. In this transfer the Far Eastern Division lost 490 church members, and the newly formed Sungari-Mongolian Mission began the year with 312 baptized believers.

Annual Report

Statistical Report of the Far Eastern Division Mission

1 Number of Mission	2 NAME OF MISSION	3 Number of Mission Stations	4 Number of Mission Outstations	5 Number of Organized Churches	6 Baptized Membership of Organized Churches	7 Baptized During Year	8		9		10		11 BIBLE WOMEN (not including column 10)		12 Other Foreign Women (Unlicensed)	13 BOOK AND PERIODICAL CANVASSERS		
							Foreign	Native	Foreign	Native	Foreign	Native	Foreign	Native		Foreign	Native	
1	Philippine Union	5	153	110	6374	1364	7	9	3	26	18	43		8		1	85	
2	Chosen Union	3	52	20	1637	245	5	10	6	15	15	64		9		1	29	
3	Japan Union	3	15	10	460	64	5	4	2	9	4	5		1	11	1	12	
4	Manchurian Union	2	10	9	245	64	4		2	1	6	11	2	1		1	10	
5	Central China Union	5	66	25	1732	311	8	7	12	20	20	54		13		3	36	
6	North China Union	2	9	4	276	80	3	3	3	6	7	12	1	2		1	15	
7	South China Union	7	79	35	2366	176	10	6	3	68	21	31		19		1	11	
8	West China Union	3	7	2	126	37	4	2	2	1	6	7		2		1	6	
9	East China Union	5	72	35	1513	415	7	7	3	15	12	50	1	21		1	15	
10	Division Hdqrs.	1						9	2	1		46	6			2		
11	Malaysian Union	12	26	26	1944	431	18	3	7	35	27	30		7		1	61	
12	Sungari-Mongolian Mission	1	6	1	334	104	1		1	6	2	17	1	1			2	
13	TOTALS, Year 1925	49	495	277	17007	3291	81	53	45	202	184	330	5	84	11	14	282	
14	<i>The totals given below for preceding years reveal the growth year by year.</i>																	
15	Totals, Year 1924	45	435	251	14844	2992	72	39	41	172	161	239	6	71	10	15	242	
16	Totals, Year 1923	44	343	235	12845	2276	73	43	41	153	165	228	2	75	8	11	193	
17	Totals, Year 1922	46	337	230	10954	1901	61	38	55	155	159	203	5	79	10	13	192	
18	Totals, Year 1921	46	299	201	9740	2126	59	33	48	154	138	192	5	54	8	17	145	
25	26	27	28	29	30	31	32	33	34	35	36	37	38					
	Average Attendance S. S.	S. S. Offerings to Foreign Missions for First Twelve Sabbaths	Thirteenth Sabbath Offering	Total S. S. Offerings for Quarter, including Thirteenth Sabbath Offering	Retail Value of Periodical Sales (including Subscriptions)	Value of Book Sales (on Basis of Retail Price)	Total Retail Value of Book, Tract, and Periodical Sales (All Literature)	No. of Church Buildings Owned by Mission	Estimated Value	Approximate Seating Capacity	Number of Church Schools Conducted	Enrollment Church Schools	Number of Intermediate Schools					
1	5404	\$ 5076.54	\$ 1171.32	\$ 6247.86	\$ 16149.80	\$ 52311.72	\$ 69863.51	90	\$ 19841.00	10330	17	688						
2	2617	2672.85	298.44	2971.29	5739.87	9597.18	17057.65	61	22522.00	6450	31	1016						
3	388	1560.90	724.30	2285.20	7165.22	9369.45	15770.60	7	16000.00	900								
4	233	418.58	106.37	524.95	5422.83	1866.22	7263.89	2	6000.00	275	6	112	1					
5	2114	1434.40	398.98	1833.38	7869.89	7172.73	14664.34	20	12777.00	2000	26	391	3					
6	374	409.41	70.34	479.75	8501.42	2415.55	10876.94	1	1500.00	400	6	171	1					
7	3021	1656.15	374.54	2030.69	7572.83	2965.89	12337.65	18	13775.00	4100	46	2283	3					
8	308	444.29	89.36	533.65	784.77	658.40	1729.62	1	3000.00	250	4	121						
9	2647	1972.64	325.25	2297.89	8475.57	5715.26	14077.94	9	25100.00	2300	27	983	3					
10											1	6						
11	1958	4314.58	1641.38	5955.96	9980.94	32947.40	55558.94	10	39207.00	2050	20	917						
12	340	991.21	170.56	1161.77	27.36	1110.72	1989.81	1	12500.00	450	1	58						
13	19404	\$20951.55	\$5370.84	\$26322.39	\$77690.50	\$126630.52	\$221190.89	220	\$172222.00	29505	185	6746	11					
14	<i>Totals Year 1924, 1923, 1922, 1921, given below</i>																	
15	17406	17822.05	4288.10	22110.15	33486.25	148410.76	181903.01	182	123531.00	21810	154	5044	10					
16	14871	17083.04	3606.19	20689.23	31114.44	79878.60	171008.62	140	89212.00	20725	131	3884	12					
17	12897	15549.52	3062.86	18612.38	35660.30	80306.93	140357.35	76	36675.00	10163	139	3927	7					
18	10836	14771.82	3007.07	17778.89	39749.91	78157.47	119327.06	71	35036.00	8855	127	3846	5					

Far Eastern Division

for the Year Ending December 31, 1925

All Values in U. S. Gold

Number of Mission	14 MEDICAL WORKERS (including those licensed)		15 OTHER WORKERS (not else- where listed)	16 TOTAL LABORERS (net total)		17 TITHE RECEIPTS (U. S. GOLD)			18	19	20	21	22	23	24
	Foreign	Native	Native	Foreign	Native	Foreign	Native	Total tithe Receipts (Foreign and Native)	Tithe Per Capita	Total offerings Foreign Missions Excepting S. S. and Y. P. M. S. as noted Columns 27, 51	Total Contributions Home Mission Work Exclusive of Harvest Gathering and Sustentation Funds	Total Receipts, Harvest Gathering Work	Total Contributions for Local Church Work not Included in Columns Nos. 20 and 21	Number of Sabbath-Schools	Membership Sabbath-Schools
1			58	28	229	\$ 2267.45	\$22851.92	\$25119.37	\$ 4.74	\$ 1977.22	\$ 35.32	\$ 2975.75	\$ 278.93	184	6520
2	2	1	13	26	138	2577.32	4429.80	7007.12	4.61	1391.82	106.99		1332.69	90	3867
3				22	31	1802.21	5642.29	7444.50	17.52	1180.44	226.96	2494.15	6323.35	17	533
4			16	12	39	939.53	666.08	1605.61	7.95	442.26	116.22	270.06	59.05	12	338
5	5	20	15	40	202	2847.45	2927.40	5774.85	3.97	891.34		1016.91	426.12	72	2702
6			11	13	39	1020.93	809.69	1830.62	9.58	634.11	35.70	1193.91	35.98	10	416
7	5	16	74	34	252	2800.25	3597.85	6398.10	2.83	1105.10	119.44	258.05	166.99	91	3840
8	1	1	1	12	20	957.08	553.06	1510.14	16.72	213.08		16.30	118.67	11	395
9			5	22	154	2556.21	3066.04	5622.25	5.11	1194.67	102.13	112.85		78	3436
10	12	5	96	56	110	10476.98		10476.98							
11	2	3	47	52	186	5124.00	15401.00	20525.00	13.67	1093.35	228.13	11660.96	255.85	59	2029
12		1	3	4	25	687.02	2445.71	3132.73	10.04	108.83		20.13	116.59	7	385
13	27	47	339	321	1425	\$34056.43	\$62390.84	\$96447.27	\$ 6.50	\$10232.22	\$970.89	\$20019.07	\$9114.22	631	24462
14															
15	13	24	226	283	1112	29722.50	52566.06	82288.56	6.42	5378.38	1278.78	22441.69	9504.20	559	21034
16	13	27	266	289	982	26348.80	42339.35	68688.15	6.27	6399.41	2178.86	16087.21	3397.51	530	18180
17	16	44	268	288	988	23642.72	35302.08	58944.80	6.05	4662.38	564.93	14839.51	3154.85	501	16261
18	13	30	232	300	868	24899.51	32600.89	57500.40	7.46	1329.50	1017.26	18232.66	6152.58	423	13970

Number of Mission	40 Enrollment of Intermediate Schools	41 Number of Training Schools	42 Enrollment of Training Schools	43 Total Enrollment	44 NUMBER OF FOREIGN TEACHERS		45 NUMBER OF NATIVE TEACHERS		46 Total No. of Teachers	47 Estimated Value School Buildings and Equipment	48 Expense of Maintenance of Schools	49 Number of Young People's Societies	50 Membership	51 Y. P. S. Contributions for Foreign Work	52 Y. P. S. Contributions for Home Mission Work	53 Y. P. S. Contributions for Local Society Work
					Men	Women	Men	Women								
1		1	284	972	4	4	14	11	33	\$ 19500.00	\$ 15174.54	77	1906	\$ 28.30	\$ 36.93	\$117.47
2		1	125	1141	2	2	45	5	54	27251.48	15294.41	27	947	26.55	48.29	25.99
3		1	40	40	2	3	2		7	3000.00	7486.44	7	67			
4	18			130	1		7	1	9	807.50	853.35	7	142			1.11
5	189			580	3	4	38	7	52	19410.00	11449.10	10	284			20.67
6	70			241	1	2	10	4	17	6250.00	2213.44	9	223			
7	286			2569	4	7	80	26	117	30982.45	17253.81	8	325		55.18	6.16
8				121		1	7	3	11	650.00	1041.23					
9	133			1116	1	4	41	10	56	3000.00	8262.64	13	507			
10		1	150	156	7	4	8	3	22	83000.00	28500.00					
11		1	308	1225	4	6	29	11	50	60530.47	12573.61	6	200			6.68
12				58			1	3	4	551.16	1295.46	1	60		22.79	
13	696	5	907	8349	29	37	282	84	432	\$254933.06	\$121398.03	165	4661	\$ 54.85	\$163.19	\$178.08
14																
15	734	5	1005	6783	27	33	243	67	370	136296.77	97099.80	123	4365	29.21	79.39	94.63
16	935	5	989	5808	24	33	225	72	354	107774.77	100306.74	88	3200	66.90	285.36	241.40
17	681	5	867	5475	23	27	220	59	329	100697.16	77345.49	76	2835	202.15	48.09	266.95
18	422	5	766	5034	22	20	176	46	264	93467.65	47366.69	36	1062		30.07	97.54

Table O

THE FAR EASTERN DIVISION OF THE GENERAL CONFERENCE OF SEVENTH-DAY ADVENTISTS
 STATISTICAL SUMMARY --- INCLUDING PROVINCIAL MISSIONS --- FOR THE YEAR ENDING DECEMBER 31, 1925

WITH COLUMNS SHOWING STATUS DEC. 31, 1921, AND GAINS FOR FOUR YEARS

All monies in
 U. S. Gold

Name of Union Missions and Provincial Missions	Number of Churches	Baptized Membership Dec. 31, 1925	Net Gain during Yr. 1925 in Church Membership (Missions 1921 --- 1925)	Baptized Membership Dec. 31, 1921 (four years ago)	Net Gains during the four-year period--- 1921, 1922, 1923, 1924, 1925	Percentage of Gain for four-year period	Number of Baptisms during Yr. 1925	No. of Ordained Ministers	No. of Licensed Ministers	No. of Licensed Missionaries	No. of Colporteurs	Total No. of FOREIGN Laborers, Dec. 31, 1925	Total No. of NATIVE Laborers, Dec. 31, 1925	Total No. of Laborers, both Foreign and Native, Dec. 31, 1925	FOREIGN Tithe Receipts during Yr. 1925 (Gold)	NATIVE Tithe Receipts during Yr. 1925 (Gold)	Per capita NATIVE Tithe (Gold) Yr. 1925 mem- bership as basis figure using Dec. 31, '24 mem- bership as basis figure	No. of Sabbath Schools Dec. 31, 1925	Sabbath School Membership Dec. 31, 1925	Total Sabbath School Offerings for Missions during 1925 (Gold)	No. of CHURCH SCHOOLS	Total enrollment of Church Schools, Dec. 31, 1925
PHILIPPINE UNION	110	6374	1078	2924	3450	118%	1364	16	29	61	86	28	229	257	\$ 2267.45	\$22851.92	\$4.32	184	6520	\$6427.86	18	972
Northern Luzon Mission	16	1036	291	369	667	180	293	3	3	9	14	2	36	38	1878.91	2.53	25	1003	585.40	2	130	
East Visayan Mission	6	725	225	110	615	559	234	2	2	4	26	2	42	44	3243.55	6.49	25	739	791.01	1	33	
West Visayan Mission	35	2073	488	491	1582	322	489	2	6	20	9	2	43	45	5164.97	3.27	63	1975	1417.39	7	315	
Central Luzon Conf.	50	2460	45	1954	506	26	318	7	13	11	31	2	71	73	12300.00	5.14	67	2712	3403.03	7	210	
Southern Luzon Mission	3	80	29		80		30		2	1	6		8	8	264.49	5.19	4	91	51.03			
Union Mission								2	3	16	1	20	29	49	2267.45					1	284	
CHOSEN UNION	20	1637	118	1146	491	43	245	15	21	79	30	26	138	164	2577.32	4429.80	3.03	90	3867	2971.29	32	1141
West Chosen Mission	10	727	7	533	194	37	84	4	5	22	6	1	35	36	1720.11	2.41	38	1951	1436.34	18	556	
Central Chosen Mission	5	453	21	319	134	42	57	2	4	16	9		31	31	1358.30	3.23	23	872	807.69	5	161	
South Chosen Mission	3	372	67	218	154	70	84	4	5	14	13	4	32	36	958.95	3.12	24	802	617.50	6	187	
Union Mission	2	85	23	76	9	12	20	5	7	27	2	21	40	61	2577.32	392.44	6.33	5	242	109.76	3	237
JAPAN UNION	10	460	35	299	161	54	64	9	11	9	13	22	31	53	1802.21	5642.29	12.64	17	533	2285.20	1	40
Kyushu Mission	2	47	6	41	6	15	10		1		2		3	3	479.90	12.19	2	42	115.16			
Chugoku Mission	1	65	8	18	47	261	6	1	2	3	1		7	7	1168.52	20.50	3	80	393.05			
Kansai Mission	3	115	18	80	35	44	22	1	3	1	3		8	8	1336.62	13.78	5	168	561.31			
Kanto Mission	3	192	7	142	60	35	19	1	1		5		8	8	2146.71	12.85	4	212	919.30			
Tohoku Mission	1	23	-5	14	9	64	2		1				1	1	90.05	3.22	1	12	53.24			
Hokkaido Mission		18	1	4	14	350	5		1	1	1		3	3	283.69	20.25	2	19	87.73			
Union Mission								6	2	4	1	22	1	23	1802.21	136.80			155.41	1	40	
MANCHURIAN UNION	9	245	43	127	118	88	64	4	3	17	11	12	39	51	939.53	666.08	3.43	12	338	524.95	7	130
Fengtien Mission	7	187	26	86	101	117	50	1	2	8	4	3	22	25	506.64	3.42	8	251	343.00	5	87	
Kirin Mission	2	58	8	41	17	42	14	1	1	6	4	11	15		159.44	3.47	4	87	181.95	1	25	
Heilungkiang Mission											2		2	2								
Union Mission								2		3	1	5	4	9	939.53					1	18	
CENTRAL CHINA UNION	25	1732	278	1190	542	45	311	15	32	74	39	40	202	242	2847.45	2927.40	2.05	72	2702	1833.38	29	580
Honan Mission	9	649	83	423	226	53	114	4	11	27	9	13	78	91	1147.00	2.07	24	1217	740.97	8	208	
Hunan Mission	5	507	51	380	127	33	53	3	8	20	9	5	50	55	730.90	1.62	24	750	433.29	8	109	
Hupeh Mission	7	396	83	257	139	54	88	3	6	11	6	6	36	42	609.90	1.97	14	383	295.84	7	149	

Union Mission									2	2	4	1	8		8	2847.45										
NORTH CHINA UNION	4	276	85	108	168	155	80	6	9	19	16	13	39	52	1020.93	809.69	4.52	10	416	479.75	7	241				
Shantung Mission	2	143	50	60	83	138	45	1	4	7	5	2	18	20		393.41	4.42	6	221	182.89	3	63				
Chihli Mission	2	133	35	48	65	177	35	3	3	8	10	4	14	18		416.28	4.63	4	195	296.86	2	73				
Union Mission								2	2	4	1	7	7	14	1020.93							2	105			
SOUTH CHINA UNION	35	2366	104	2045	321	16	176	16	71	52	12	34	252	286	2800.25	3597.85	1.60	91	3840	2030.69	49	2569				
Cantonese Mission	7	405	52	286	119	41	52	5	19	20	2	9	49	58	1.64	943.75	2.74	16	470	733.77	8	306				
Hakka Mission	4	818		746	72	9	21	3	22	2	1	4	50	54	2.50	629.05	.77	21	1231	394.99	11	750				
Kwangsi Mission	5	162	15	114	48	42	15	1	2	13	1	6	22	28		188.20	1.32	9	238	182.22	2	130				
North Fukien Mission	6	342	5	319	23	7	39	1	11	3	2	4	39	43	27.30	669.80	1.97	14	576	199.22	8	255				
South Fukien Mission	5	304	32	261	43	16	35	4	8	2	4	4	45	49	3.00	712.10	2.66	9	655	309.45	7	500				
Swatow Mission	8	336		319	16	5	14	1	8	9	1	2	47	49	2.50	464.95	1.40	22	670	211.04	13	628				
Union Mission								1	1	3	1	5		5	2763.31											
WEST CHINA UNION	2	126	36	78	48	61	37	6	3	13	7	12	20	32	957.08	553.06	6.91	11	395	533.65	4	121				
East Szechwan Mission	1	76	17	56	20	35	20	3	1	5	6	2	15	17	224.16	331.85	6.51	6	170	274.29	2	30				
West Szechwan Mission	1	50	19	22	28	127	17	2					4	8	460.84	195.02	6.71	4	215	213.01	2	91				
Tibetan Mission									1	1			2	1	174.41	26.19		1	10	46.36						
Union Mission								1	1	2	1	4		4	97.67											
EAST CHINA UNION	35	1513	412	729	784	107	415	14	18	62	16	22	154	176	2556.21	3066.04	2.82	78	3436	2297.89	30	1116				
Anhwei Mission	6	379	97	209	170	81	73	6	3	15	4	3	36	39		820.69	2.96	16	781	451.22	11	340				
Kiangsu Mission	20	845	238	370	475	128	257	5	10	21	7	7	81	88	980.18	2001.85	3.33	33	1692	1686.74	15	660				
South Chekiang Mission	9	289	77	150	139	92	85	1	3	22	4	4	37	41	31.37	243.50	1.17	29	963	159.93	4	116				
Union Mission								2	2	4	1	8		8	1544.66											
Division Headquarters								11	1	52	2	56	110	166	10476.98							2	156			
MALAYSIAN UNION	26	1944	442	669	1275	190	431	21	42	57	62	52	186	238	5124.00	15401.00	10.60	59	2029	5955.96	21	1225				
Batakland Mission								2		2		4	5	9	221.00	267.00	3.00	6	188	115.58	1	127				
British North Borneo	2	167	12	129	38	29	12	1	2	6	1	2	11	13	215.00	532.00	3.48	9	129	344.46	4	90				
East Java Mission	3	195	51	57	138	242	32	3	6	9	20	6	32	38	623.00	3534.00	25.61	5	164	1034.37	3	310				
Malay States Mission	2	206	46	97	109	112	46	1	6	2	11	4	19	23	513.00	1092.00	7.00	8	127	504.03	3	45				
North Sumatra Mission	1	47	4	30	17	56	5	1	3	2	4	2	8	10	312.00	432.00	10.54	2	62	215.01						
Siam Mission	1	81	26	14	67	478	16	1	5	2	6	4	13	17	176.00	479.00	9.39	2	95	185.60	2	54				
Singapore Mission	3	282	21	193	89	46	20	2	4	3	2	2	12	14	2069.00	3543.00	14.46	6	330	1828.79	5	170				
South Sumatra Mission	2	88	15	37	51	138	13	1	2	5	2	2	9	11	201.00	546.00	7.69	2	123	453.72	1	30				
West Java Mission	9	503	165	90	413	459	165	2	4	13	14	6	31	37	560.00	3700.00	11.18	13	496	927.92	1	91				
Celebes Mission	2	286	106		286		104	2	6	1	1	2	8	10	234.00	1276.00	7.17	6	315	346.48						
Union Mission	1	89	-4	22	67	304	18	5	4	12	1	18	38	56							1	308				
SUNGARI-MONGOLIAN MISSION	1	334	22				104	1	7	19	2	4	25	29	687.02	2445.71	7.84	7	386	1161.77	1	58				
Lost through transfer of East Siberia to Europe			-490	425	-91																					
DIVISION TOTALS YEAR 1925	277	17007	2163	9740	7267	74%	3291	134	247	514	296	321	1425	1746	\$34056.43	\$62390.84	4.28	631	24462	26322.39	201	8349				

Quarterly Report—

Statistical Report of the Far Eastern Division Mission

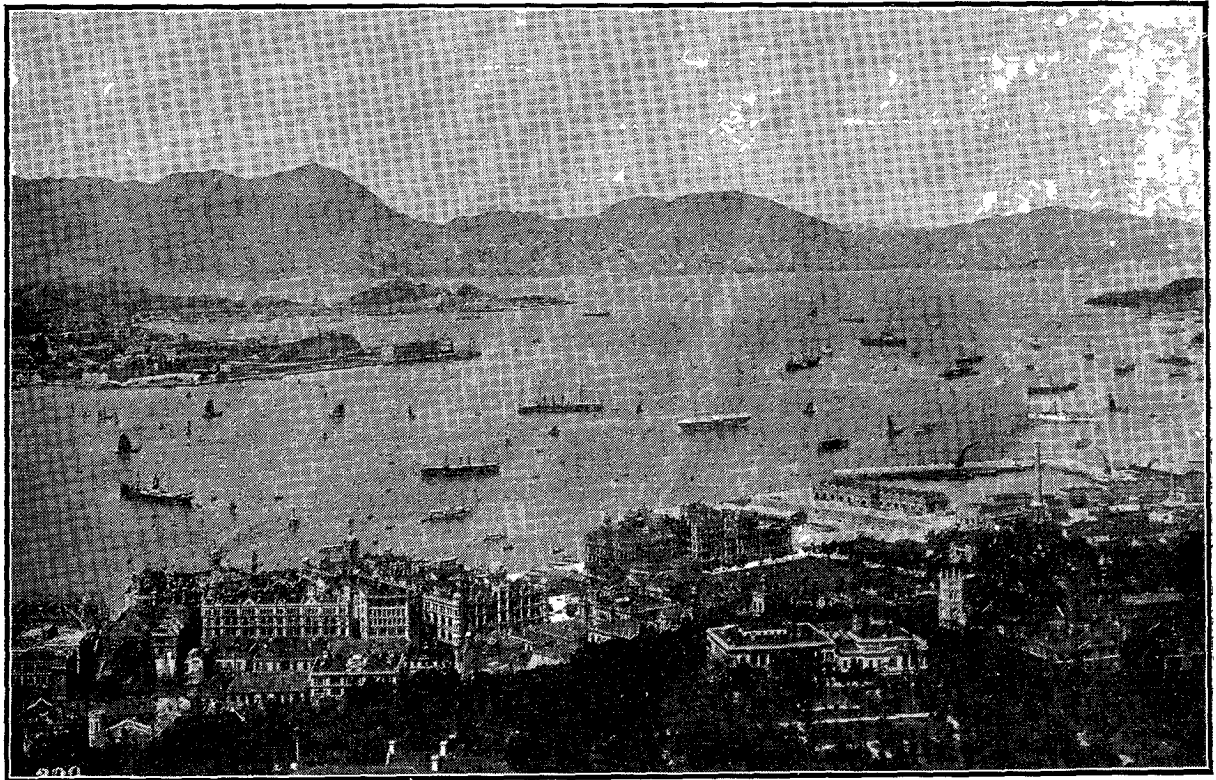
1 Number of Mission	2 NAME OF MISSION	3 Number of Mission Stations	4 Number of Mission Outstations	5 Number of Organized Churches	6 Baptized Membership of Organized Churches	7 Baptized During Quarter	8		9		10		11 BIBLE WOMEN (not including column 10)		12 Other Foreign Women (Unlicensed)	13 BOOK AND PERIODICAL CANVASSERS			
							Foreign	Native	Foreign	Native	Foreign	Native	Foreign	Native		Foreign	Native	Foreign	Native
1	Philippine Union	5	153	110	6374	379	7	9	3	26	18	43		8		1	85		
2	Chosen Union	3	52	20	1637	118	5	10	6	15	15	64		9		1	29		
3	Japan Union	3	15	10	460	32	5	4	2	9	4	5		1	11	1	12		
4	Manchurian Union	2	10	9	245		4		2	1	6	11	2	1		1	10		
5	Central China Union	5	66	25	1732	106	8	7	12	20	20	54		13		3	36		
6	North China Union	2	9	4	276	36	3	3	3	6	7	12	1	2		1	15		
7	South China Union	7	79	35	2366	69	10	6	3	68	21	31		19		1	11		
8	West China Union	3	7	2	126	17	4	2	2	1	6	7		2		1	6		
9	East China Union	5	72	35	1513	28	7	7	3	15	12	50	1	21		1	15		
10	Division Hdqrs.	1					9	2	1		46	6				2			
11	Malaysian Union	12	26	26	1944	252	18	3	7	35	27	30		7		1	61		
12	Sungari-Mongolian Mission	1	6	1	334		1		1	6	2	17	1	1			2		
13	TOTALS, 4th Qr. 1925	49	495	277	17,007	1037	81	53	45	202	184	330	5	84	11	14	282		
14	<i>The totals given below for preceding years reveal the growth year by year.</i>																		
15	Totals, 4th Qr. 1924	45	436	251	14844	875	72	39	41	166	160	239	6	70	10	20	234		
16	Totals, 4th Qr. 1923	44	343	235	12845	785	73	43	41	153	165	228	2	79	8	10	190		
17	Totals, 4th Qr. 1922	46	337	230	10954	504	61	38	55	155	159	203	5	79	10	13	192		
18	Totals, 4th Qr. 1921	46	299	201	9740	731	59	33	48	154	138	192	5	54	8	17	145		
25	26	27	28	29	30	31	32	33	34	35	36	37							
Number of Mission	Average Attendance S. S.	S. S. Offerings to Foreign Missions for First Twelve Sabbaths	Thirteenth Sabbath Offering	Total S. S. Offerings for Quarter, including Thirteenth Sabbath Offering	Retail Value of Periodical Sales (including Subscriptions)	Value of Book Sales (on Basis of Retail Price)	Total Retail Value of Book, Tract, and Periodical Sales (All Literature)	No. of Church Buildings Owned by Mission	Estimated Value	Approximate Seating Capacity	Number of Church Schools Conducted	Enrollment Church Schools							
1	5404	\$1352.11	\$370.96	\$1723.07	\$4448.35	\$16090.35	\$21426.42	90	\$19841.00	10330	17	688							
2	2617	725.05	91.24	816.29	2490.03	1823.80	4313.84	61	22522.00	6450	31	1016							
3	388	422.05	169.96	592.01			2311.26	7	16000.00	900									
4	233	112.31	29.44	141.75	1939.50	524.41	2463.91	2	6000.00	275	6	112							
5	2114	361.43	98.36	459.79	3540.84	1895.92	5436.76	20	12777.00	2000	26	391							
6	374	101.45	25.71	127.16	3686.42	429.76	4122.59	1	1500.00	400	6	171							
7	3021	491.71	99.91	591.62	5061.67	467.68	5832.11	18	13775.00	4100	46	2283							
8	308	148.95	32.34	181.29	372.85	351.25	920.30	1	3000.00	250	4	121							
9	2647	559.34	71.46	630.80	3859.09	2327.09	6186.18	9	25100.00	2300	27	983							
10											1	6							
11	1958	1016.00	418.81	1434.81	4628.53	21566.66	28853.43	10	39207.00	2050	20	917							
12	340	304.82	67.66	372.48		225.03	537.59	1	12500.00	450	1	58							
13	19404	5595.22	1475.85	7071.07	30027.28	45701.95	82404.39	220	172222.00	29505	185	6746							
14	<i>Totals Year 1924, 1923, 1922, 1921, given below</i>																		
15	17714	5066.60	1394.84	6461.44	10243.02	28873.08	43790.04	182	123531.00	21810	153	5023							
16	14871	5729.42	1095.36	6824.78	9911.17	23878.40	41862.19	140	89212.00	20725	131	3884							
17	12897	4596.12	919.49	5515.61	8918.77	29363.54	40492.18	76	36675.00	10163	139	3927							
18	10836	3674.99	743.89	4418.88	10985.87	18460.67	29558.41	71	35036.00	8855	127	3602							

Far Eastern Division

for the Quarter Ending December 31, 1925

All Values in U. S. Gold

Number of Mission	14 MEDICAL WORKERS (including those licensed)		15 OTHER WORKERS (not elsewhere listed)	16 TOTAL LABORERS (net total)		17 TITHE RECEIPTS (U. S. GOLD)			18 Tithe Per Capita	19 Total offerings Foreign Missions Excepting S. S. and Y. P. M. S. as noted Columns 27, 51	20 Total Contributions Home Mission Work Exclusive of Harvest Ingathering and Sustentation Funds	21 Total Receipts, Harvest Ingathering Work	22 Total Contributions for Local Church Work not included in Columns Nos. 20 and 21	23 Number of Sabbath-Schools	24 Memberships		
	Foreign	Native	Native	Foreign	Native	Foreign	Native	Total tithe Receipts (Foreign and Native)									
1			58	28	229	576.10	5840.63	6416.73		622.50		4.25		184	6520		
2	2	1	13	26	138	622.88	1530.82	2153.70		869.13			514.43	90	3867		
3				22	31	524.78	1816.29	2341.07		929.52		2283.32	5654.25	17	533		
4			16	12	39	231.00	172.92	403.92		230.81	69.17	270.06	23.59	12	338		
5	5	20	15	40	202	683.32	871.16	1554.48		346.05		514.33	367.54	72	2702		
6			11	13	39	246.44	178.25	424.69		562.90	31.47	1193.91	15.27	10	416		
7	5	16	74	34	252	678.60	1170.13	1848.73		104.42	87.16	212.05	127.57	91	3840		
8	1	1	1	12	20	289.10	130.14	419.24		105.38			107.74	11	395		
9			5	22	154	590.27	1228.73	1819.00		538.54	90.15	19.00	862.80	78	3436		
10	12	5	96	56	110	3799.20		3799.20									
11	2	3	47	52	186	1655.21	5623.91	7279.12		999.24	6.36	7104.47	76.50	59	2029		
12		1	3	4	25	292.25	451.05	743.30						7	386		
13	27	47	339	321	1425	10189.15	19014.03	29203.18		5308.49	284.31	11601.39	7749.49	631	24462		
14																	
15	13	24	228	283	1062	7216.45	15684.18	22900.63		3144.49	317.15	9080.22	1465.43	558	21044		
16	13	27	266	289	980	6734.73	14873.33	21608.06		4808.36	3344.66	7845.76	2618.13	530	18180		
17	16	44	268	288	988	5587.78	10073.68	15661.46		3248.19	71.67	9383.18	396.81	501	16261		
18	13	30	232	300	863	6397.93	8322.43	13015.73		534.62	393.85	6609.35	1219.70	423	13970		
38																	
Number of Mission	39 Number of Intermediate Schools	40 Enrollment of Intermediate Schools	41 Number of Training Schools	42 Training Schools Enrollment of	43 Total Enrollment	44 NUMBER OF FOREIGN TEACHERS		45 NUMBER OF NATIVE TEACHERS		46 Total No. of Teachers	47 Estimated Value School Buildings and Equipment	48 Expense of Maintenance of Schools	49 Number of Young People's Societies	50 Membership	51 Y. P. S. Contributions for Foreign Work	52 Y. P. S. Contributions for Home Mission Work	53 Y. P. S. Contributions for Local Society
						Men	Women	Men	Women								
1			1	284	972	4	4	14	11	33	\$ 19500.00	\$ 4809.37	77	1906	6.00	7.43	5.00
2			1	125	1141	2	2	45	5	54	27251.48	3986.75	27	947	5.55	2.42	4.81
3			1	40	40	2	3	2		7	3000.00	716.00	7	67			
4	1	18			130	1		7	1	9	807.50	297.11	7	142			1.11
5	3	189			580	3	4	38	7	52	19410.00	1485.00	10	284			20.67
6	1	70			241	1	2	10	4	17	6250.00	342.00	9	223			
7	3	286			2569	4	7	80	26	117	30982.45	2768.46	8	325		7.60	6.16
8					121		1	7	3	11	650.00	255.00					
9	3	133			1116	1	4	41	10	55	3000.00	168.69	13	507		4.72	
10			1	150	156	7	4	8	3	22	83000.00	7125.00					
11			1	308	1225	4	6	29	11	50	60530.47	1564.53	6	200			6.68
12					58			1	3	4	551.16	410.12	1	60			
13	11	696	5	907	8349	29	37	282	84	432	254933.06	23928.03	165	4661	11.55	22.17	44.43
14																	
15	10	699	5	1005	6727	27	33	242	66	368	136296.77	26852.22	123	4231	3.96	30.11	27.64
16	12	935	5	989	5808	24	33	225	72	354	84374.77	15262.32	88	3200	27.06	96.99	30.24
17	7	681	5	867	5475	23	27	220	59	329	100697.16	18959.41	76	2835	126.90	45.29	31.25
18	5	422	5	766	5034	22	20	168	45	255	93467.65	12770.68	36	1062			51.97



Hongkong Harbor, where Brother A. La Rue pioneered the way as a Colporteur-Evangelist

Table C

Colporteur-Evangelists — Literature Sales in the Far Eastern Division— 1924 and 1925
(U. S. Gold)

Name of Union	1924 Total Sales	1925 Total Sales	Gain	Per Cent Gain	Membership Jan. 1 '25	Average Sales per Member '25
Philippines	\$ 68,841.68	\$ 69,863.51	\$ 1,021.83	1.48%	5,296	\$ 11.30
Chosen	11,470.26	17,057.65	5,587.39	40.87%	1,519	11.23
Japan	15,259.38	15,770.60	511.22	3.35%	425	37.10
Manchuria	4,521.38	7,263.89	2,742.51	60.65%	202	36.26
Central China	12,287.90	14,664.34	2,376.44	19.34%	1,454	10.08
North China	2,801.89	10,876.94	8,075.05	288.20%	191	56.95
South China	11,768.62	12,337.65	569.03	4.83%	2,262	5.45
West China	1,080.19	1,729.62	649.43	60.12%	90	19.22
East China	4,001.65	14,077.94	10,076.29	251.80%	1,101	12.79
Malaysia	43,161.67	55,558.94	12,397.27	28.72%	1,502	36.99
Sungari-Mongolia	1,043.00	1,989.81	946.81	90.77%	312	6.34
Miscellaneous Sales -- China	5,665.39		-5,665.39		490 tr. to Europe	
Division TOTALS	For Yr. 1924 \$181,903.01	For Yr. 1925 \$221,190.89	\$39,287.88	21.60%	14,844	14.89

THE KOREAN (CHOSŬN) UNION MISSION OF SEVENTH-DAY ADVENTISTS --- ANNUAL SUMMARIES

Table G

SHOWING DEVELOPMENT IN KOREA YEAR BY YEAR

All monies in U. S. gold

Year	No. of Churches	No. of Baptized Church Members	Total Baptisms during year	NET GAIN in membership during year	Ordained Ministers	Licensed Ministers	Licensed Missionaries	Colporteurs	Total Workers Foreign and Native	Total TITHES Receipts both Foreign and Native together	Total NATIVE TITHES here listed separately	No. of Sabbath Schools	Sabbath School Membership	Total Sabbath School Contributions to Missions	No. Church Schools	Church School Enrollment	Total Value of Book and Periodical Sales
1904	4	72															
1905	4	72								100.00		3	40	10.00	1	18	
1906	5	100		28	1		5	1	5	100.00		9	275		2	35	
1907	6	105		5	2		5	8	13	65.83		8	200		2	75	
1908	4				2		3		14	150.00		6	143	140.00	1	14	15.00
1909	4	96		24	2		7	1	21	501.00		18	625	52.16	12	179	30.00
1910	4	96		0	2		2	1	21	674.17		20	625	80.53			30.00
1911	4	159		63	3	12	17	4	45	786.90		22	575	98.97	4	112	1,342.77
1912	5	200		41	4	1	7		60	1,120.59		20	600	164.83	9	215	
1913	8	420	66	220	3	12	33	6	54	1,355.27	405.44	32	865	253.25			1,021.89
1914	10	585	137	165	3	18	35	22	78	1,388.56	597.93	40	1,116	359.82	8	161	1,714.09
1915	12	704	189	119	2	20	29	25	90	1,428.44		60	1,369	297.71			1,667.98
1916	19	860	172	156	5	31	32	28	106	2,048.20	1,179.18	73	1,601	594.96			1,846.16
1917	17	882	84	22	6	25	7	22	96	1,952.38	1,317.93	81	1,632	699.93			2,501.33
1918	17	923	116	41	8	15	44	15	106	2,504.73	1,433.26	81	1,615	899.21	7	136	3,417.10
1919	24	1,021	124	98	10	22	40	33	131	3,262.40	2,066.33	78	1,681	1,319.71	13	349	7,377.83
1920	20	1,032	131	11	11	18	39	22	124	4,348.40	2,829.44	78	2,008	2,179.03	23	684	11,878.61
1921	20	1,246	104	114	9	21	52	22	128	5,213.62	2,842.03	73	2,565	2,515.09	16	771	9,452.54
1922	20	1,397	112	51	9	23	43	22	136	4,778.63	3,057.95	163	3,047	2,318.13	20	962	13,005.69
1923	20	1,350	287	163	10	29	55	25	149	5,061.02	3,382.50	105	3,540	2,416.27	23	963	12,305.49
1924	21	1,519	265	159	10	23	59	31	149	6,590.04	3,915.56	85	3,721	2,483.79	30	1,078	11,470.26
1925	20	1,637	245	118	15	21	79	30	164	7,007.12	4,429.20	90	3,887	2,971.29	32	1,141	17,087.65

THE MANCHURIAN UNION MISSION OF SEVENTH-DAY ADVENTISTS --- ANNUAL SUMMARIES

Table K

SHOWING DEVELOPMENT IN MANCHURIA YEAR BY YEAR

Year	No. Churches	No. of Baptized Church Members	Total Baptisms during year	NET GAIN in membership during year	Ordained Ministers	Licensed Ministers	Licensed Missionaries	Colporteurs	Total Workers Foreign and Native	Total TITHES Receipts both Foreign and Native together (gold)	Total NATIVE TITHES here listed separately (gold)	No. of Sabbath Schools	Sabbath School Membership	Total (gold) Sabbath School Contributions to Missions	No. of Church Schools	Church School Enrollment	Total Value of Book and Periodical Sales (U.S. gold)
1914	1	6			1	1	3		5	124.83		1	7	8.57			11.98
1915	1	17	9	11	1	4	4		9	200.24		2	23	62.26			77.58
1916	1	35	18	18	1	7	4	3	15	339.59	85.17	5	53	149.34			629.51
1917	2	54	18	39	2	5	1	4	18	412.86	203.80	6	85	215.92			1,975.61
1918	2	65	14	11	2	7	3	3	17	692.17	242.61	6	98	264.15	1	12	2,180.10
1919	3	87	23	22	2	7	7	4	23	705.17	335.80	7	123	201.51	2	30	3,351.06
1920	6	135	28	48	3	9	11	6	31	1,099.61	434.55	9	186	300.79	2	38	3,657.88
1921	5	127	25	18	1	8	10	7	38	1,142.35	357.79	9	182	386.33	4	57	3,512.83
1922	7	145	36	18	1	7	14	6	37	1,285.75	500.38	10	255	498.72	6	98	5,603.30
1923	8	175	40	30	1	6	24	13	43	1,369.08	596.23	10	231	460.60	6	113	6,033.26
1924	9	202	42	27	2	5	11	9	31	1,331.69	675.73	11	291	444.56	6	132	4,521.38
1925	9	245	64	118	4	3	17	11	51	1,605.61	668.08	12	338	524.95	7	130	7,223.89

THE MALAYSIAN UNION MISSION OF SEVENTH-DAY ADVENTISTS --- ANNUAL SUMMARIES

Table J

SHOWING DEVELOPMENT IN MALAYSIA YEAR BY YEAR

(All monies in U.S. gold)

Year	No. of Churches	No. of Baptized Church-members	Total Baptisms during year	NET GAIN in membership during year	Ordained Ministers	Licensed Ministers	Licensed Missionaries	Colporteurs	Total Workers For 'n & Ntve	Total TITHES Receipts both Foreign and Native	Total NATIVE TITHES (Only Native)	No. of Sabbath Schools	Sabbath School Membership	Total Sabbath School Contributions to Missions	No. Church Schools	Church School Enrollment	Total Value of Book and Periodical Sales
1898 to 1902	--- Beginnings; no statistics																
1903					1		2		4	150.22		1	20		1	3	79.12
1904					1		3		5	73.78							3.05
1905					1		4	1	6	306.82		1	38	23.13	1	12	1944.14
1906					2		5	1	8	478.93		2	58	47.02	1	21	
1907					3		5	6	9	720.13		3	76	149.92			4257.56
1908					3	1	10	6	15	769.14		4	98	124.16			3513.42
1909					1	2	13	4	21	778.95		5	250	186.01	1	40	3640.28
1910					2	2	12	5	22	1156.61		6	275	277.43			4308.46
1911	1	44			3	2	13	2	20	1665.81		7	217	405.33	1	43	976.98
1912	7	113			3	2	14	1	32			8	249		14	133	
1913	4	137	42	24	2	9	10	2	23	2228.03		12	283	641.91			1529.37
1914	6	200	54	63	4	5	17	4	30	3082.38		11	266	1013.18	1	35	1114.12
1915	6	243	53	43	4	15	21	3	43	2583.06		9	314	1047.22			919.54
1916	6	314	68	71	4	16	22	3	46	4437.24	3700.00	7	393	1108.86			1928.24
1917	6	337	57	23	7	16	12	12	43	4834.97	4018.96	12	429	1334.02			3143.54
1918	7	348	38	11	6	12	8	7	36	6407.95	5000.00	13	442	1692.55	6	207	6688.09
1919	8	455	79	107	11	17	15	69	9523.55	6335.57	22	487	2356.66	7	119	21257.24	
1920	9	500	81	45	12	22	29	25	93	11097.78	7712.74	23	619	3389.15	3	89	35342.03
1921	11	669	175	189	17	23	26	24	99	11171.57	6499.23	28	866	3423.45	5	264	23387.00
1922	12	844	206	175	17	30	34	43	112	11237.12	7811.63	28	972	4850.52	3	335	27211.14
1923	16	1120	270	276	20	29	45	26	115	15444.79	9032.89	32	1112	4429.53	9	546	36532.30
1924	19	1502	481	382	19	34	60	48	158	15683.00	111265.53	47	1658	4679.73	16	709	43161.67
1925	26	1944	491	442	21	42	57	62	238	20525.00	15401.00	59	2029	5955.96	21	1225	55556.64

China:

A STATISTICAL TABLE SHOWING THE DEVELOPMENT, YEAR BY YEAR, OF ALL THE PROVINCIAL MISSIONS OF THE SEVENTH-DAY ADVENTIST DENOMINATION IN CHINA AND MANCHURIA

Table F
U. S. GOLD

Year	No. of Churches	No. of Baptized Church Members	Total Baptisms during Year	Total NET GAIN in church members during the Yr.	Ordained Ministers	Licensed Ministers	Licensed Missionaries	Colporteurs	Total Laborers Foreign and Native	Total TITHE RECEIPTS (in U.S. Gold) for the Year	Total NATIVE TITHE for the Yr. (Native only) (Gold)	Total Offerings for Evangelistic Work, exclusive of Harvest Ingathering	No. of Sabbath Schools	Total Sabbath School Membership	Total Sabbath School Contributions to Missions (Gold)	No. of Church Schools	Total Enrollment of Church Schools	Total RETAIL VALUE of Book and Periodical Sales for the Year (U.S. Gold)		
1921	1				1	3	1		4	300.00			1	16	20.00					
1923	1	6		4	9	10			13	200.00			2	16	16.00		13			
1924	2	20		14	14	14			14	600.00			3	60	16.00		15	100.00		
1925	1	36		20	19	19			19	600.00			6	100	10.00		15	180.00		
1926	2	36		6	2	2			49	990.00			9	280	60.00		6	150		
1927	7	70		32	7	7			41	966.65			9	214	114.95		8	287.45		
1928	5	128		58	4	4			30	1,252.00			9	150	100.00		7	170		
1929	5	150		2	13	13			79	1,500.00			10	320	110.78		10	200		
1930	12	251		101	15	15			80	2,666.75			11	464	100.12		11	242		
1931	14	706		205	10	10			137	2,115.25			168	38	300.00		13	333		
1932	14	706		205	10	10			137	2,500.00			168	38	1,200		22	470		
1933	29	611		272	11	11			193	3,197.24			945	39	437.23		23	2,644.32		
1934	42	1,355		404	15	15			255	3,184.40			1,264	40	87	6.604	33	906		
1935	43	1,610		471	25	25			325	4,535.99			1,500	80	90	3,411	36	1,960		
1936	66	2,155		558	39	39			401	7,605.40			1,600	61	126	4,871	63	3,984.91		
1937	61	2,288		341	33	33			401	4,882.42			1,097	95	137	4,535	67	2,958.60		
1938	70	2,866		598	57	57			490	9,208.01			1,464	77	121	5,080	67	4,091.36		
1939	77	3,166		574	306	31			651	10,366.47			1,654	77	121	4,871	66	4,091.36		
1940	77	3,575		535	407	38			1,000	11,212.51			1,823	77	121	4,871	66	4,091.36		
1941	96	4,277		710	708	40			1,114	16,345.95			1,823	77	121	4,871	66	4,091.36		
1942	106	4,498		533	821	45			1,114	19,432.46			1,926	77	121	4,871	66	4,091.36		
1943	92	4,799		544	801	46			98	23,370.40			4,254	41	4,504	86	235	6,935	99	3,270
1944	97	5,300		736	801	46			103	21,961.55			4,254	41	4,504	86	235	6,935	99	3,270
1945	110	6,324		1,083	891	72			103	33,216.53			4,254	41	4,504	86	235	6,935	99	3,270
1946	110	6,324		1,083	891	72			103	33,216.53			4,254	41	4,504	86	235	6,935	99	3,270

SOUTH CHINA: THE SOUTH CHINA UNION MISSION OF SEVENTH-DAY ADVENTISTS --- ANNUAL SUMMARIES SHOWING DEVELOPMENT IN SOUTH CHINA YEAR BY YEAR

Table H
U. S. GOLD

Year	No. of Churches	No. of Baptized Church Members	Total Baptisms during the Year	Total NET GAIN in church members during the year	Ordained Ministers	Licensed Ministers	Licensed Missionaries	Colporteurs	Total Laborers Foreign and Native	Total TITHE RECEIPTS (in U.S. Gold) for the year, from both foreign and native.	Total NATIVE TITHE (here given separately) (gold)	No. of Sabbath Schools	Total Sabbath School Membership	Total Sabbath School Contributions to Missions during yr. (Gold)	No. of Church Schools	Total Enrollment of Church Schools	Total RETAIL VALUE of Book and Periodical Sales for the year (Gold)	
1910	4	92			6	34	13		53	\$ 1,090.56		8	205	32.25	7	348	381.92	
1911	7	208		116	5	7	24		45	843.08		19	544	96.83	7	298	355.83	
1912																		
1913	9	222		61	9	23	30		35	1,051.21		36	908	177.21	14	501	942.10	
1914	11	421		161	199	7	40		5	1,567.35		34	1,029	290.39	14	501	942.10	
1915	14	739		343	318	6	49		5	1,819.76		39	1,682	561.49	14	501	942.10	
1916	25	865		215	126	9	47		15	2,321.76		44	1,992	831.50	42	1,226	2,751.71	
1917	25	1,021		258	216	11	49		17	2,197.88		44	1,798	831.47	42	1,226	2,751.71	
1918	25	1,259		250	178	12	40		17	340	1,173.62	44	2,112	846.80	34	936	2,918.25	
1919	28	1,365		259	104	13	40		30	349	1,654.04	50	2,499	1,005.87	35	1,275	5,819.65	
1920	28	1,652		310	289	12	44		49	1,101	1,791.01	61	2,461	958.91	49	1,588	4,864.47	
1921	28	2,045		412	393	12	52		51	2,357.84		76	3,085	1,490.93	45	1,782	6,742.42	
1922	32	2,013		348	28	15	56		46	9	2,444	3,079.40	70	2,728	1,443.77	51	1,907	7,189.04
1923	35	2,127		198	94	18	56		35	236	5,999.71	70	2,850	2,090.61	49	1,936	10,709.65	
1924	35	2,262		198	175	18	66		46	13	6,928.69	80	3,744	1,824.94	48	2,410	11,768.72	
1925	35	2,262		198	175	18	66		46	13	6,928.69	80	3,744	1,824.94	48	2,410	11,768.72	
1926	35	2,262		198	175	18	66		46	13	6,928.69	80	3,744	1,824.94	48	2,410	11,768.72	
1927	35	2,262		198	175	18	66		46	13	6,928.69	80	3,744	1,824.94	48	2,410	11,768.72	
1928	35	2,262		198	175	18	66		46	13	6,928.69	80	3,744	1,824.94	48	2,410	11,768.72	
1929	35	2,262		198	175	18	66		46	13	6,928.69	80	3,744	1,824.94	48	2,410	11,768.72	
1930	35	2,262		198	175	18	66		46	13	6,928.69	80	3,744	1,824.94	48	2,410	11,768.72	
1931	35	2,262		198	175	18	66		46	13	6,928.69	80	3,744	1,824.94	48	2,410	11,768.72	
1932	35	2,262		198	175	18	66		46	13	6,928.69	80	3,744	1,824.94	48	2,410	11,768.72	
1933	35	2,262		198	175	18	66		46	13	6,928.69	80	3,744	1,824.94	48	2,410	11,768.72	
1934	35	2,262		198	175	18	66		46	13	6,928.69	80	3,744	1,824.94	48	2,410	11,768.72	
1935	35	2,262		198	175	18	66		46	13	6,928.69	80	3,744	1,824.94	48	2,410	11,768.72	
1936	35	2,262		198	175	18	66		46	13	6,928.69	80	3,744	1,824.94	48	2,410	11,768.72	
1937	35	2,262		198	175	18	66		46	13	6,928.69	80	3,744	1,824.94	48	2,410	11,768.72	
1938	35	2,262		198	175	18	66		46	13	6,928.69	80	3,744	1,824.94	48	2,410	11,768.72	
1939	35	2,262		198	175	18	66		46	13	6,928.69	80	3,744	1,824.94	48	2,410	11,768.72	
1940	35	2,262		198	175	18	66		46	13	6,928.69	80	3,744	1,824.94	48	2,410	11,768.72	
1941	35	2,262		198	175	18	66		46	13	6,928.69	80	3,744	1,824.94	48	2,410	11,768.72	
1942	35	2,262		198	175	18	66		46	13	6,928.69	80	3,744	1,824.94	48	2,410	11,768.72	
1943	35	2,262		198	175	18	66		46	13	6,928.69	80	3,744	1,824.94	48	2,410	11,768.72	
1944	35	2,262		198	175	18	66		46	13	6,928.69	80	3,744	1,824.94	48	2,410	11,768.72	
1945	35	2,262		198	175	18	66		46	13	6,928.69	80	3,744	1,824.94	48	2,410	11,768.72	
1946	35	2,262		198	175	18	66		46	13	6,928.69	80	3,744	1,824.94	48	2,410	11,768.72	
1947	35	2,262		198	175	18	66		46	13	6,928.69	80	3,744	1,824.94	48	2,410	11,768.72	
1948	35	2,262		198	175	18	66		46	13	6,928.69	80	3,744	1,824.94	48	2,410	11,768.72	
1949	35	2,262		198	175	18	66		46	13	6,928.69	80	3,744	1,824.94	48	2,410	11,768.72	
1950	35	2,262		198	175	18	66		46	13	6,928.69	80	3,744	1,824.94	48	2,410	11,768.72	
1951	35	2,262		198	175	18	66		46	13	6,928.69	80	3,744	1,824.94	48	2,410	11,768.72	
1952	35	2,262		198	175	18	66		46	13	6,928.69	80	3,744	1,824.94	48	2,410	11,768.72	
1953	35	2,262		198	175	18	66		46	13	6,928.69	80	3,744	1,824.94	48	2,410	11,768.72	
1954	35	2,262		198	175	18	66		46	13	6,928.69	80	3,744	1,824.94	48	2,410	11,768.72	
1955	35	2,262		198	175	18	66		46	13	6,928.69	80	3,744	1,824.94	48	2,410	11,768.72	
1956	35	2,262		198	175	18	66		46	13	6,928.69	80	3,744	1,824.94	48	2,410	11,768.72	
1957	35	2,262		198	175	18	66		46	13	6,928.69	80	3,744	1,824.94	48	2,410	11,768.72	
1958	35	2,262		198	175	18	66		46	13	6,928.69	80	3,744	1,824.94	48	2,410	11,768.72	
1959	35	2,262		198	175	18	66		46	13	6,928.69	80	3,744	1,824.94	48	2,410	11,768.72	
1960	35	2,262		198	175	18	66		46	13	6,928.69	80	3,744	1,824.94	48	2,410	11,768.72	
1961	35	2,262		198	175	18	66		46	13	6,928.69	80	3,744					



Worship

O Brother man! fold to thy heart thy brother;
 Where pity dwells, the peace of God is there;
 To worship rightly is to love each other,
 Each smile a hymn, each kindly deed a prayer.
 Follow with reverent steps the great example,
 Of Him whose holy work was "doing good";
 So shall the wide earth seem our Father's temple,
 Each loving life a psalm of gratitude.
 Then shall all shackles break; the stormy clangor
 Of wild war music o'er the earth shall cease;
 Love shall tread out the baleful fire of anger,
 And in its ashes plant the tree of peace!
 —J. C. Whittier.

1925 Report of the Northern Luzon Mission

*(As rendered by Pastor Juan O. Afenir at the annual meeting,
 Artacho, Pang., Jan. 28, 1926)*

"FEAR thou not; for I am with thee: be not dismayed; for I am thy God; I will strengthen thee; yea, I will help thee; yea, I will uphold thee with the right hand of My righteousness." Isa. 28:10. There is no promise dearer and more encouraging to the hearts of the workers and believers in this great territory, than this. Surely the Lord has been good to us the past year. We were weak, but He encouraged us. He gave us manifold blessings. He used not only workers, but also laymen, as His instrumentalities through whom many were delivered from the bondage of sin. He gave freely of His Holy Spirit to comfort and sustain those in distress and sorrow. For any measure of success achieved in 1925 we should ascribe the honor and glory to Him.

Evangelistic Work

Strong evangelistic campaigns were put forth, especially the first half of the year. At one time there were five tent efforts in Pangasinan, one in La Union, and one in Ilocos Norte. Our baptisms totaled 293, the most we have ever had in this mission. At the close of 1924 our church membership was 1,036.

We were able to organize two strong churches, and two of our new companies are awaiting organization. With the help of the Harvest Ingathering funds used for church extension work, we assisted in building a nice chapel at Laoac, Manaoag, Pang., and we bought a lot in Suriwan on which our brethren built a neat chapel. The company at Natividad built a neat chapel with only ten pesos of help from the Harvest Ingathering. It is a small chapel of light materials, but it stands as a monument of the triumph of the third angel's message in that town. Our brethren in San Nicolas, Pang., have prepared all necessary materials for their chapel. It is worthy of mention that the San Nicolas brethren went to the forest several times to cut the timber. When constructed, theirs will be one of the strongest chapels in this mission. The Union liberally promised us a good amount to help in building the chapel at Camilang. The Camilang brethren are planning to build as soon as the harvest is over.

Sabbath Schools

Some of the Sabbath schools reported in 1924 have been dropped, and so we have an increase of only two schools. The membership at the close of December was 1,003 and the average attendance, 938.

Colporteur Work

Until September the colporteur force actively engaged in the field was slender. Under the direction of Brother M. F. Wiedemann, with the help of Pastor R. R. Figuhr, a strong colporteur institute was held in Tayug, Pang. As the result, nine strong bookmen and six magazine workers went out. A considerable number of souls have been brought to Christ the past year through the influence of the printed page.

Home Missionary Work

There were many laymen who co-operated with ministers and Bible workers in soul-saving. In most places where our evangelists pitched tents, many lay brethren gave not only their time, but also the needed materials for the seating and decorating of the tents. In one church, ten were baptized as the result of the combined efforts of home missionary workers. If all our missionary societies were to do the same, how long would it take us to finish the work in this mission? My brethren in the ministry, our people are willing to work if they have the proper training. We must remember when we baptize a number of believers that our work has just begun. There should be patient teaching and demonstration of how to distribute our papers and tracts, and of how to give Bible studies in the neighborhood. Instruction should be given every new company of believers on all kinds of missionary work.

Church Schools

Three church schools are now doing good work,—Artacho, Narvacan, and Tambuan (Mountain Province),—with an enrollment of 130. Many of the unbaptized young people who come to the schools are instructed and baptized, and thus our schools become centers of light. Five of the pupils in Artacho are now preparing to be baptized during this general meeting.

Young People's Work

We have ten good young people's societies doing an excellent work for the Master. More societies will be organized as soon as the secretary is relieved of his school responsibilities.

Number of Workers

There are two ordained ministers, three licentiates, eight licensed missionaries, and nine laboring "on probation," never having received any license for doing such labor. This gives us twenty-one evangelistic workers. To this we must add our fourteen colporteurs and our tract society secretary,—a total of thirty-six.

Our Needs

Our supreme need is individual victorious life day by day. The work cannot be finished unless it is finished in us individually,—unless we can say that we are already saved by the grace of the Lord. Next to this we need a better, keener vision of the task set before our eyes. Oh the thought of preaching the gospel to all the people within the boundary of Northern Luzon! This task seems impossible from a human standpoint, but our General who has never known defeat says to us, "Advance." And we should advance, trusting in His promises. The harvest truly is ripe. The time has come for the finishing of God's work in the earth. Brethren and sisters in conference assembled, let us consecrate ourselves and our possessions to be used in this closing message of salvation.

JUAN O. AFENIR.

Far Eastern Division Outlook

Published monthly by the Far Eastern Division of the General Conference of Seventh-day Adventists, 25 Ningkuo Road, Shanghai, China. Subscription, seventy-five cents gold a year. Edited by the Division Secretary. Registered at the Chinese Post-Office as a Newspaper.

中華郵政特准掛號認爲新聞紙類

The Spring Council

As we go to press, the superintendents of Unions are coming in for attendance at the annual Spring Council of the Far Eastern Division Committee, opening the morning of March 19, and continuing for about ten days. It is anticipated that all the superintendents of Unions will be able to reach Shanghai, although several lines of communication in the interior of China are entirely closed to civilian traffic because of warring factions.

The Council is to be followed by a Convention of bookmen—the Union field and home missionary secretaries, the managers of the five major publishing houses, and a few others, including Brother H. H. Hall, associate secretary of the General Conference Publishing Department. Reports of these meetings will be appearing in our next two issues.

In Terms of Four Figures

In the days of the early apostolic church there were unusual "pentecostal" experiences bringing to the church gains in membership so very large that these could be expressed only in terms of four figures. In this connection, it is a cause for gratitude to a kind Providence to be able to note that the year 1925 brought to the Philippine Union Mission of Seventh-day Adventists a net gain of 1,078 in church membership, as Brother Eugene Woenser, the secretary-treasurer of that Union, reported during the opening hour of the annual meeting of the Philippine Union Committee recently held in Manila.

The Southern Luzon Mission

During the recent annual meeting of the Philippine Union Mission Committee, arrangements were perfected for the officering of a mission being formed for operation on and after March 1, 1926, under Union supervision, and to be known as The Southern Luzon Mission. Brother W. B. Riffel is to serve as director and treasurer, and Brother Fortuna Parlan as secretary. Headquarters are to be established in A'bay, the capital of the province of Albay. Most of those in the newly formed mission speak the Bicol language, which Brother and Sister Riffel are studying with diligence. The mission includes in its territory the provinces of Camarines Norte, Camarines Sur, Albay, and Sorsogon, with a combined population of 707,500.

Already there are nearly one hundred baptized believers in the Bicol language area, and these form a splendid nucleus around which to form a constituency.

Literature Sales in the Philippines

During the Year 1925

Summaries of sales of denominational literature in the Philippine Union, as compiled by Brother E. A. Moon, publishing house manager, show the 1925 sales to be 139,727.03 pesos, which is an increase of 1,356.80 pesos over the preceding year. On this business a profit has been shown for the year's operations. Thus the publishing work in the Philippines continues to be self-supporting in all essential features, aside from occasional grants of heavy machinery from the Home Board. Brother M. F. Wiedemann, in charge of the distribution of this large output from the Philippine Publishing House, is planning with his associate workers to make the year 1926 by far the best ever seen in the Philippine Union, in the placing of Bible truth for to-day in the homes of the people throughout the archipelago.

At the Shanghai Sanitarium

Several of our workers have been receiving medical aid at the Avenue Joffre Branch of the Shanghai Sanitarium. Pastor A. J. Wearner, director of the Hupeh Mission, spent a number of weeks under the care of Dr. H. W. Miller and associate medical workers, and early in March was able to return to Hankow, although he is still far from well, and will of necessity have to complete his convalescence while at home. Two of our workers from the Chosen Union are at the Sanitarium,—Mrs. H. J. Bass, and Brother L. I. Bowers. Brother A. Mountain is now here from the Central China Union. A few from the force of workers in Shanghai have also been receiving the benefits of medical aid at the Sanitarium.

The South China Union has loaned Pastor C. C. Morris, director of the North Fukien Mission, to the Sanitarium for several weeks, in order that he may unite with Dr. Miller in the preparation of detailed plans and blueprints for the buildings of the main institution to be established on the Rubicon Road property of the Association.

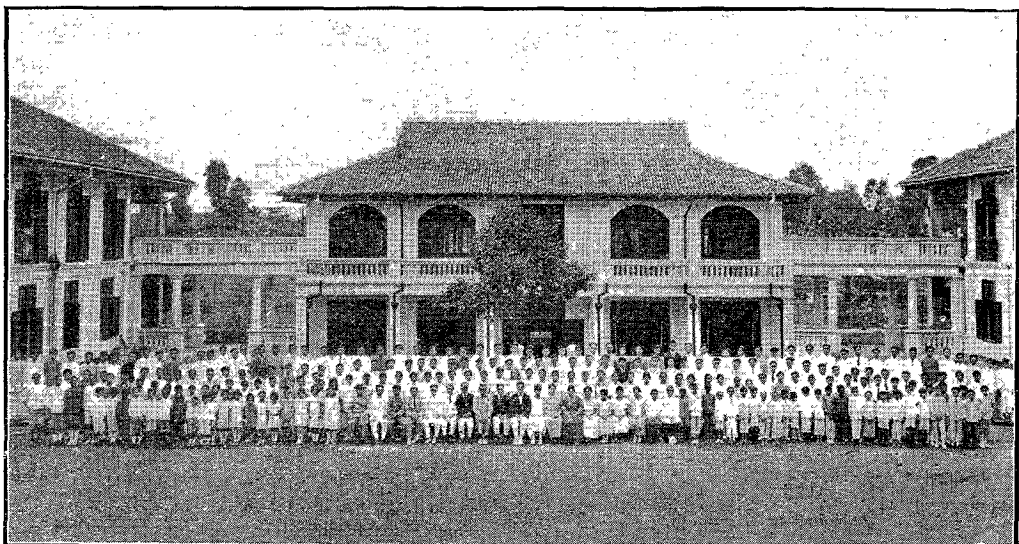
Another Language Area

From the West China Union we learn that a Nosu convert is now preaching in the Nosu language, in use in northwestern Kweichow and adjacent territory in the far west of China. This necessitates the adding of another language to our Table of Languages appearing on another page of this number of the *Outlook*.

Notice—Legal Meeting of the Shanghai Sanitarium Association

The regular annual session of the constituency of the Shanghai Sanitarium Association will be held at 25 Ningkuo Road, Shanghai, China, on March 24, 1926, at 10 A. M.

(Signed) I. H. Evans, *President*,
C. C. Crisler, *Secretary*.



Student body and faculty of the Malaysian Training School, with Seminary building in foreground