

# QUARTERLY REVIEW

of the

## European Division of the General Conference of Seventh-Day Adventists

Vol. 12

No. 1

Statistical Report of Conferences and Mission Fields  
for the  
First Quarter 1926

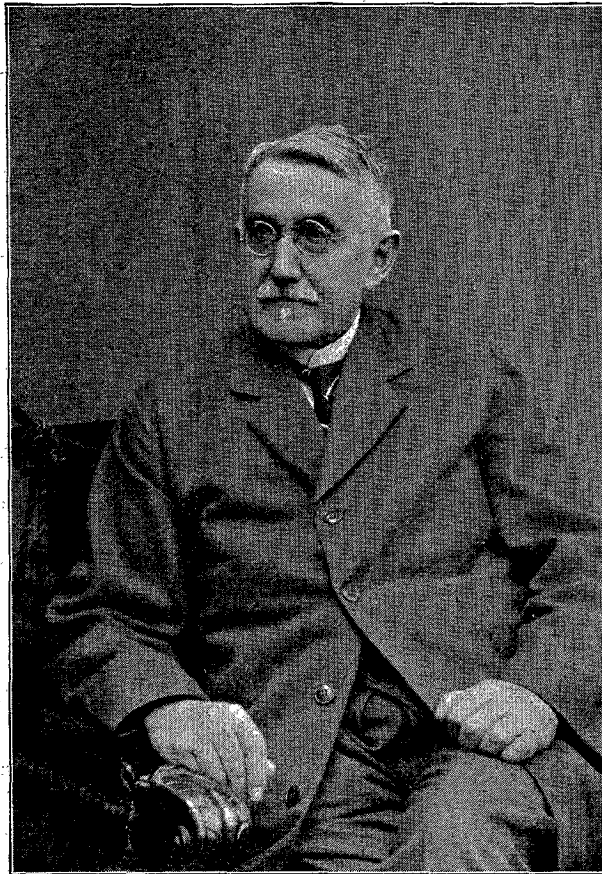
Issued by the European Division of Seventh-Day Adventists  
17 Höheweg, Berne, Switzerland

## A Veterans Birthday.

Shortly after returning from his trip to the Far East which took him away from the homeland over six months on a very strenuous journey, Elder L. R. Conradi celebrated his seventieth birthday, March 20, at Hamburg. The nine churches here and the employees of the publishing house and the food factory had arranged for an appropriate and very dignified festive meeting in the "Advent Kapelle" at the Grindelberg which has been the scene of many a historic event linked with the Advent movement in Europe. Elder H. F. Schuberth, an early associate of Elder Conradi at Hamburg outlined the work of our veteran leader on this occasion, whose privilege it had been to see the fruit of his labours ripen that he has so untiringly worked for during the past forty years in Europe, a jubilee that was commemorated with his birthday.

Brother Conradi has lived to see the work grow from its infancy until it has now gained a foothold in practically every country of Europe under the signal blessing of God. When addressing the congregation, Brother Conradi said that the fact of his birthday falling on a Sabbath was not without deeper meaning as it predicted a more restful life than in the past now that he had reached the Biblical age of threescore years and ten. This thought was emphasized by the gift of a most comfortable easy-chair presented by the three German unions. Knowing, however, Brother Conradi's will-power and love of work and travel

that has been found to overcome natural physical limitations of advanced years, the brethren gave expression to this expectation by the addition to their gift of two new leather suitcases to replace those so well worn on the last journey to the Far East.



After some critical weeks at the Zehlendorf sanitarium when the life of our beloved brother hung in the balance he has again recovered sufficiently at this point of writing that we found him at home sitting in his easy-chair surrounded by piles of books he was studying in finishing the last chapters of the English edition of his great work on the Golden Age. He was also planning to work out the annual report for the German Mission Society that is to link up our present work with previous days while he is recuperating and preparing to take the boat on May 14 for the United States to attend the General Conference session.

When in connection with some Board meetings a number of Division brethren were invited to Brother Conradi's home following his birthday, it was touching to hear the hundred telegrams read that had come from all over Europe showing the esteem and love cherished for Brother Conradi who was rightfully celebrated as one of the greatest men the Lord had given to His people. Some fine artistically engraved addresses were presented. Of special note among these was that sent by the Scandinavian union presented at the hands of Elder

J. C. Raft. May the Lord uphold our brother and his faithful companion that his wise counsel may still be obtained for the cause of God to which he has so unreservedly given his life.

Hamburg, May 6, 1926.

W. K. Ising.



## The Latin Union.

In point of population, the Latin Union is without question the largest union conference in the world. It has within its borders as many people as the three large division conferences of South America, Inter-America, and South Africa. From this vast field we bring greetings and words of cheer.

Although the work in our Union has had to be carried forward under great difficulties and against many obstacles, we have only words of courage and cheer. The Lord has protected, blessed and prospered His work, and to Him we give all the honor and praise.

The believers throughout the Latin Union love the Lord, and are willing to labor and sacrifice for the advancement of His cause. It has been a source of real encouragement to witness the readiness and enthusiasm with which they have taken hold of our various campaigns, such as the Harvest Ingathering and the Big Week. In spite of the greatly depreciated value of the currencies in most of the countries comprising our field, the Latin Union heads the list of European Unions with the highest average per capita returns for the Big Week. Remarkable progress has also been made in the Harvest Ingathering work, which was undertaken for the first time in 1920. Last year 47 %, or nearly one half, of all of our foreign mission offerings came from this source. Tithes and offerings for the last quadrennial period show a good increase over the preceding four years.

Under the able and courageous leadership of Brother J. A. P. Green, who entered the field in 1921, a strong, successful colporteur work has been built up. Only those who know the character of the field can fully appreciate what has been accomplished. The General Conference President in speaking of it not long ago, stated that he regarded it "as one of the miracles of grace in modern missions."

Five years ago we did not own a building of any kind anywhere in our vast field outside of Switzerland. In the year 1921 two properties were purchased in France, one at Collonges near the Swiss border, and the other at Melun not far from Paris. Since then an excellent school has been built up on the Collonges' property, and at Melun, thanks to the liberal aid from the Publishing Fund, and the valuable counsel and help given by Brother H. H. Hall, we now have a fine well equipped publishing house.

During the last four years good buildings with ample room for chapel, conference offices and

workers' apartments have either been built or bought in Lisbon, Marseilles, Brussels, and Strasbourg, — (this last one is not yet finished). In Florence, Italy, a publishing house and mission headquarters' building is now in process of construction. Several small chapels have also been built recently. These buildings have already proved a great blessing to our work. In our great crowded cities it has been absolutely impossible to rent suitable buildings and because of this the work has suffered much in the past. In addition to providing better accommodation and facilities for our work, these buildings have also given us added influence and prestige among the people, who now believe we have come to stay.

The school at Collonges, though still in its infancy, has been of inestimable value to our field. Already fifty of its students have entered our organized work as evangelists, Bible workers, department secretaries and office workers. This school is our hope for supplying the necessary workers to carry the message to the unwarned millions in the Latin countries.

We believe that all will be glad to learn that another country has recently been added to our list of entered fields. Not long ago a sister moved from Algeria to Casa Blanca, French Morocco. In a humble way she began to give the message to her neighbors. Soon a number of these began to keep the Sabbath, and then earnest appeals were sent to us for a worker. In response to these appeals one of our young ministers and his wife, both of them former students from Collonges, were sent there last fall. Several converts have been baptized, a Sabbath school has been organized, and soon we expect to have a good church there. So at the very time when great armies have been contending fiercely for the possession and control of Morocco, the soldiers of the cross have quietly entered, and planted the banner of Emmanuel.

During the past four years about 1400 souls have been baptized and admitted into our churches. We thank God for these precious souls that have been gathered into our ranks, but we are sorry that we have not been able to win many times as many.

In the past it has seemed almost impossible to break through the terrible spiritual darkness and indifference that has existed practically everywhere in our field, but thank God a new day seems to be dawning. In Italy where the message has been preached in about fifteen different cities the past winter, the workers have reported splendid interests. In Lisbon our new chapel seating more than six hundred has been crowded to the doors night after night for months, and in France where it has always been the most difficult to create an interest, practically all of our ministers now have their halls filled with attentive listeners. In Le Havre, France, where Doctor Nussbaum is laboring the largest halls and cinemas in the city have proved too small.

As we see these indications of a new and better day, we thank God and take courage. Soon we believe hundreds and thousands will embrace the Third Angel's Message in these Latin countries of Europe and North Africa. What we need now is more workers, and above all, more of the Spirit and power of God.

A. V. Olson.



## Gendia Hospital.

It gives me great pleasure to write something of the welfare of our hospital here in Kenya Colony, Central Africa. It has been some time since we commenced to dream of a hospital here. Now we see that dream almost fulfilled. Mr. Salway, our builder, is hard at work completing the buildings that comprise the hospital. The building operations have taken longer than we expected but we must remember that this is tropical Africa, a land where "wait" and "not yet" are the order of the day. After Mr. Salway had laid the foundations of the ward, put up the brick walls and concreted the floor, he was hindered for several weeks for timber for the roof that had been ordered locally five months before. At last the timber arrived and the roof went up in a little over a week.

Our two nurses, Sisters Olsen and Neilsen from the Skodsborg Sanitarium, Denmark, have recently arrived and will prove a great asset to our medical work here. Also they will form a link with our European medical institutions which I hope will strengthen our connection with them.

The operating-room building is finished and from there we are carrying on dispensary work till the other buildings are finished, when we can treat in-patients and do a bigger work. At present, my time is divided between carpentry work for hospital furniture, and medical work.

I have informed the people that when the hospital is finished we shall give notice to the chiefs and headmen. We shall then expect that the patients will come in large numbers. Among our many patients we have treated quite a few cases of syphilis and yaws with injections of Novarsenobillon, with very good success. Some of these cases were greatly disfigured and deformed and it does our hearts good to know that we have been able to help them. We have had people come for treatment from distances up to 60—70 miles, they having walked all the way.

The other afternoon we removed a fibroma from a woman's upper alveola, that protruded 2½ inches from the mouth and caused much difficulty in eating and drinking. She had had this for ten years. The relief and pleasure that this woman showed when it was removed and she was going home looking and feeling like a different woman, was good to see. Her son gave a thank-offering of 6/—. The woman had come twelve miles to seek help.

We try to show these sick people the reason we are here to help them. We trust that by our daily life among them and our kindness and efficiency in treating them we shall bring the light of the good news of salvation into their souls.

G. A. S. Madgwick, M. D.



## East African Union Mission.

It would be difficult and misleading to give comparative statistics for the past four years. The Great War had ravaged East Africa and laid much of our mission work in seeming ruin. Most of the workers were inexperienced, just getting acquainted with the languages and the native peoples.

Our baptized membership to-day in Kenya Colony and Tanganyika Territory is about 1000. Our native tithe for 1925 is about 7000/— sh. and the native offerings for the same year reach about 9000/— sh.

Shall we glance briefly over the field. Mwanza district was reentered at the end of 1922. Bro. W. Cuthbert, the Superintendent, is at Ikidzu Mission where, in 1925, he was reinforced by Bro. and Sr. Munderspach, trained nurses from Skodsborg. Within a few weeks the daily average of patients had risen to 60 and continues to grow. Many of the cases present a shocking appearance. The local tribes are savage and murders are frequent, but the Mission is making solid headway among them. Bro. Phillips at Busegwe deals with a similar people, who must experience a radical reformation before we can accept them for baptism, yet the Gospel wins its trophies among them.

At Majita Bro. H. A. Matthews occupies our biggest church on Sabbaths, with a congregation ranging from 400 to 900. Here the people are more amenable and school work prospers. Strong native leaders are being developed. For a time we were excluded from the adjacent territory of our old Iramba Mission by the hostility of the natives, but their hearts were gradually turned till they asked us to send teachers.

At Utimbaru the Chief objected to the return of our Mission so we are allowed to do medical work only for the present. There also we look for early victory as the Chief has become outwardly friendly, and his people are asking for instruction. Bro. Watson is now building a brick house there.

To the south, in the huge country of the Wasukuma, we have at present only Bro. Robson and wife, new arrivals. They have a few trusty native teachers and the work is promising enough if only it can be adequately manned.

Near the Coast, in the Pare District, we took over a living cause, nurtured to the last by faithful German workers. Brn. S. G. Maxwell and A. F. Bull have laboured there for about three years. Their small field is well provided with schools and

capable teachers. For its size it was our strongest mission, leading the way in offerings, and supplying native workers for more needy fields; but it was shut in on all sides by other Missions. Last year by unmistakable providences the barriers were burst, and now the Mission has free access to all the territory it desires to enter. The workers rejoice in an open door.

Our work in South Kavirondo moves forward. At present there are about 500 candidates for baptism. In the Kisii tribe we are the only Protestant society at work, and from all parts of the territory come calls for teachers. They are a hot-tempered race but they make ardent evangelists. Bro. Beavon has made a small beginning with literature in the vernacular, which as yet possesses not even a single gospel.

Among the large Luo tribe we had four stations, now reduced to two main ones, at Gendia and Kamagambo. Among our converts some are enterprising and ambitious. They make capable teachers and successful evangelists. In 1925 we set ten of our best teachers free to work especially in unentered territory. They report great readiness to hear the Word, and many calls for schools. To meet these demands we are laying larger plans for the training of teachers. In some three districts the weekly council of elders has asked an evangelist to preach to them regularly. These old heathen are gradually turning toward the Light. One of them, after talking with an evangelist, said: "You are not going away without prayer?" We war with strongly-entrenched customs and superstitions, but we are growing stronger. In a time of drought some of the heathen will still urge that the rain-maker be sent for, but on the whole the rain-makers are having hard times, and our native believers are beginning to cherish the hope that their land will yet become a Christian country. At first it seemed the usual thing for a native church-member who went elsewhere seeking work to give way on the Sabbath, but now we hear of them standing firm and gaining the victory.

Government officials have paid us many visits during recent months, sometimes attracted by the fame of our model native village. They express approval of what they see here, and some of them hold us up as an example in neighbouring territories. The Government Inspector of Native Education, after visiting the schools of several Missions, some of them the biggest in the country, reported that in the standard of work done and training of teachers, and for general cleanliness and smartness, the Seventh-day Adventists lead the way. One result is that we are getting many visitors. Lately a Christian chief came with ten of his men to see our work and beg for one of our teachers. We learn of two native Christians across the Kavirondo Gulf who have begun alone to observe the Bible Sabbath.

A small beginning has been made in the circulation of literature which is eagerly purchased.

A booklet is being prepared with a direct appeal to Moslems.

Statistics do not tell the whole truth, especially in Africa where the clan instinct leads people to move *en masse* or not at all. One positive Christian may be worth a score of weaker characters. We rejoice in possessing a goodly number of native believers who really count, and are linking them up more and more with ourselves in the bearing of burdens and the sense of responsibility for the success or failure of the missionary enterprise. Five years ago we sometimes wondered whether an African could develop a really spiritual nature. Now we have no doubts on that point. If the missionary will preach the Word faithfully he will see the results in men of God, „thoroughly furnished to every good work.“

Our builder has been kept busy. Since we restarted operations there have been erected four brick dwellings, one of iron and timber, three large stone schools, three Hospital buildings, a brick store, a brick workshop, to say nothing of repairs and improvements to existing buildings. It is economy to erect good buildings because temporary ones are a continual expense and a steady drain on the time and strength of the missionary.

Our new cylinder press has now been set up, having recovered the seven severe fractures it sustained on the voyage out. It is housed in a suitable building, with its oil engine, and the rest of the plant. We are now beginning to print our own books. For this plant we are truly grateful because it will multiply manifold the efficiency of our schools and evangelists.

The Hospital buildings are just about completed. They consist of a house for the accommodation of Dr. Madgwick, his two European nurses (from Skodsborg), and two European patients. The native ward has beds for fifty patients, men and women. There is a good surgery, with its anteroom, a store for medical supplies and a dispensary. In addition there is a smaller building with four compartments for the treatment of out-patients and for minor surgery. Long before the buildings were completed there was a crowd of patients daily. The Hospital will be a great benefit to the community, not only in saving of life and relief of suffering, but also by the training of our native workers in hygiene and simple remedies.

As we contemplate the work for the ensuing quadrennium, with a good hospital, a well-equipped printing house, earnest evangelists, a considerable body of trained teachers, large numbers of candidates in our baptismal classes, surrounding regions calling for our publications and our teachers, a thousand church-members who know something of the joy of giving and are eager for the spread of the truth, with the old circumscribing barriers broken down, and the country of Uganda now open before us, we expect by the blessing of God a period of progress and victory.

Kisumu, January 17, 1926. W. T. Bartlett.

## Statistical Report of the European Division of the General

Name of Conference or Mission	No. of Churches	Previous Membership	By baptism	By vote	By letter	Total gains	By apostasy	By death	By letter	Total losses	Net gain	Present Membership	Ordained Ministers	Licensed Ministers	Lic. Missionaries	Other Workers	Colporteurs	Total Workers
1	2	3	4	5	6	7	8	9	10	11	12	13	14	15	16	17	18	19
<b>European Division</b> .....	..	..	..	..	..	..	..	..	..	..	..	..	12	..	..	14	..	26
<b>Baltic Union</b> .....	..	..	..	..	..	..	..	..	..	..	..	..	4	1	..	1	..	6
Latvian Conference	38	2001	17	3	7	27	14	4	..	18	9	2010	7	3	7	1	14	33
Esthonian "	18	1280	28	27	..	55	6	4	..	10	45	1275	5	4	1	3	6	19
Lithuanian Mission .....	9	166	..	..	1	1	..	..	1	1	..	166	2	..	3	..	4	9
<b>Total</b>	65	3397	45	30	8	83	20	8	1	29	54	3451	18	8	11	6	24	67
<b>British Union Conference</b> .....	..	..	..	..	..	..	..	..	..	..	..	..	4	3	..	2	1	10
South British Conference	44	2498	4	9	23	36	22	6	12	40	-4	2494	13	2	28	6	62	111
North British "	30	1708	4	3	2	9	6	2	14	22	-13	1695	11	3	13	1	44	72
<b>Total</b>	74	4206	8	12	25	45	28	8	26	62	-17	4189	28	8	41	9	107	198
<b>Central European Union</b> .....	..	..	..	..	..	..	..	..	..	..	..	..	3	3	..	3	1	7
German Swiss Conference	30	1081	10	1	9	20	7	4	14	25	-5	1076	4	3	3	1	20	31
Wurtemberg "	46	1471	61	1	8	70	8	1	2	11	59	1580	5	3	7	1	34	50
Baden "	21	916	21	3	3	27	7	7	9	23	4	920	4	2	1	1	18	29
North Bavarian "	22	1213	21	1	23	10	..	..	9	19	4	1217	6	2	3	1	20	32
South Bavarian "	34	1726	60	2	6	68	31	5	12	48	20	1746	6	2	7	1	14	30
Main-Neckar "	23	1313	49	4	11	64	15	6	4	25	39	1357	5	2	6	1	33	47
Austrian "	20	869	12	2	1	15	13	1	4	18	-3	866	8	..	2	1	19	30
School Church .....	1	179	9	..	6	15	..	..	4	4	11	190	2	2	..	10	19	33
<b>Total</b>	197	8773	243	14	45	302	91	24	58	173	129	8902	43	19	29	20	178	289
<b>Czechoslovakian Union</b> .....	..	..	..	..	..	..	..	..	..	..	..	..	1	..	..	2	1	4
Moravia-Silesian Conference	25	860	23	2	9	34	18	2	2	22	12	872	3	1	2	1	13	20
North Bohemian "	23	565	16	1	18	8	1	5	14	4	..	569	4	2	1	..	13	20
Central Bohemian Mission	11	240	9	1	1	11	1	1	4	6	-5	245	2	1	..	3	16	29
Slovakian Mission .....	15	368	17	4	3	24	4	4	3	11	13	381	2	2	1	1	14	20
<b>Total</b>	74	2033	65	8	14	87	31	8	14	53	34	2067	12	6	4	7	57	86
<b>East German Union</b> .....	..	..	..	..	..	..	..	..	..	..	..	..	3	..	..	4	1	8
Berlin Conference	30	2185	50	4	91	145	22	8	69	99	46	2231	8	9	6	..	42	65
Brandenburg "	51	1967	42	5	20	67	21	4	46	71	-4	1963	10	8	..	1	38	57
Lower Siles. "	37	1109	54	5	61	120	25	4	47	76	44	1153	6	6	1	3	26	42
N. E. Saxonian "	42	2008	52	3	35	90	10	8	25	43	47	2055	10	7	5	2	40	64
Upper Silesian "	33	1266	41	1	12	54	18	3	17	38	16	1282	5	3	3	1	39	51
East Prussian "	66	2028	30	4	26	60	12	8	50	70	-10	2018	8	6	1	2	40	57
Pomeranian "	48	1529	38	6	21	65	13	2	31	46	19	1548	9	3	3	2	30	47
West Saxonian "	62	2282	43	1	17	61	22	5	20	47	14	2296	7	7	7	4	38	63
<b>Total</b>	369	14374	350	29	283	662	143	42	305	490	172	14546	66	49	26	19	294	454
<b>Hungarian Union</b> .....	..	..	..	..	..	..	..	..	..	..	..	..	1	1	1	4	..	7
East Hungarian Conference	23	593	36	3	3	42	7	3	1	11	31	624	2	2	6	1	29	40
Central Hungarian "	17	541	41	4	5	50	14	3	7	24	26	567	2	..	5	..	22	29
West Hungarian Mission	12	131	18	..	..	18	1	1	2	4	14	145	1	1	2	..	17	21
<b>Total</b>	52	1265	95	7	8	110	22	7	10	39	71	1336	6	4	14	5	68	97
<b>Latin Union</b> .....	..	..	..	..	..	..	..	..	..	..	..	..	9	2	..	..	1	14
Leman Conference	19	890	1	2	9	12	5	5	12	22	-10	880	3	..	10	1	20	34
South France "	18	447	..	..	1	1	..	1	2	3	-2	445	4	1	6	..	4	15
Belgian "	8	364	19	2	..	21	8	2	..	10	11	375	7	..	5	..	8	20
East France "	11	360	16	..	2	18	1	1	8	10	8	368	3	1	5	..	4	13
North France "	10	269	4	1	8	13	5	2	2	9	4	273	5	4	4	1	4	13
Italian Mission	12	332	23	2	5	30	4	3	1	8	22	354	4	8	5	1	16	34
Spanish "	7	244	..	..	..	..	..	..	..	..	..	244	4	4	5	..	14	27
Portuguese "	4	167	..	..	3	3	1	..	6	7	-4	163	2	5	..	..	9	16
Algerian Mission .....	4	107	..	..	..	..	..	2	2	4	-4	103	1	1	3	..	2	7
<b>Total</b>	93	3180	63	7	28	98	24	16	33	73	25	3205	42	26	45	3	82	198

Conference of S. D. A. for the Quarter Ending March 31, 1926.

Tithe	Tithe per Capita	Offerings to Mission (except Sabbath Sch. Off.)	Sabbath School Offerings (12 Sabbaths)	13th Sabbath School Offerings	Mission Offerings per Capita and per Week	Special Offerings (Big Week)	Contributions for Local Church Work	Books and Periodical Sales	No. of Sabbath-Schools	Membership	Average Attendance
20	21	22	23	24	25	26	27	28	29	30	31
\$ .....	.....	.....	.....	.....	.....	.....	.....	.....	.....	.....	.....
Ls. 19679.25	9.83	1681.50	2176.65	557.60	0.17	—	1871.94	7698.00	67	2087	1345
Emk. 545158.00	443.22	34449.50	118186.00	48576.00	12.58	—	—	156591.00	23	1256	980
Lit. 1945.72	11.72	264.38	424.90	61.30	0.34	—	5.85	1843.25	10	151	110
Ls. 28297.85	8.33	2285.55	4012.99	1257.94	0.17	—	1374.66	10868.88	100	3444	2435
\$ 5461.60	1.61	441.11	770.70	242.78	0.03	—	264.35	2090.17	—	—	—
£ .....	.....	.....	.....	.....	.....	.....	.....	.....	.....	.....	.....
" 3661.13. 4	1.9. 4	25.10. 0	549. 9. 8	211.14. 1	0. 0. 7	12.12. 6	422. 0. 3	2425. 6. 6	63	2683	1980
" 1894.18. 7	1.2. 4	157. 6. 5	384.12. 6	90.16. 3	0. 0. 5	7. 2. 6	365. 8. 0	1778.13. 4	55	1700	1406
£ 5556.11.11	1.6. 5	214. 7. 6	884. 2. 2	302.10. 4	0. 0. 6	19.15. 0	787. 8. 3	4198.19.10	118	4383	3336
\$ 27057.50	6.48	1044.23	4304.92	1471.46	0.12	96.13	3834.70	20424.63	—	—	—
SFr. 24828.14	24.11	1748.72	4047.88	956.65	0.48	—	4334.75	22348.00	30	950	688
Rmk. 24770.09	16.84	2594.74	3802.28	904.52	0.38	—	6773.82	23644.00	46	1800	1344
" 14432.84	15.75	1510.78	2382.85	398.33	0.36	—	4118.02	12042.00	34	974	701
" 17499.67	14.98	1187.21	2349.44	398.99	0.25	—	4237.27	13401.00	35	1339	974
" 25905.80	15.00	1884.06	3924.32	951.74	0.30	—	6366.03	8871.00	52	1879	1368
" 20802.50	15.78	1400.91	2664.94	422.31	0.26	—	4478.38	24380.00	28	1425	907
Sh. 20100.92	20.87	1232.08	1966.39	353.23	0.33	—	1768.27	15389.00	20	911	616
Rmk. 2090.82	11.68	49.55	225.38	20.50	0.13	—	111.90	2394.00	1	190	121
Rmk. 137522.05	15.67	10766.62	19788.16	4075.17	0.30	—	30639.87	116110.39	241	9468	6914
\$ 32763.50	3.73	2564.46	4713.91	969.77	0.07	—	7295.20	26676.87	—	—	—
Kč. 58124.83	67.58	6104.19	8339.09	2591.15	1.53	81.40	4103.13	49093.90	30	859	646
" 63803.59	112.93	5856.89	7257.37	1984.35	2.10	286.20	8523.30	55091.00	30	598	453
" 24118.00	100.49	3284.55	2773.49	789.20	2.19	—	897.00	55932.40	11	291	244
" 16752.54	45.52	3231.10	2282.17	524.15	1.27	—	1376.90	46627.80	13	301	273
Kč. 162798.93	80.08	18496.73	20642.12	5888.85	1.72	367.60	14902.38	206745.10	86	2049	1616
\$ 4807.30	2.36	546.20	609.54	173.39	0.05	10.85	451.58	6177.01	—	—	—
Rmk. 43980.43	20.10	4095.83	4158.33	583.86	0.31	—	8624.03	19546.00	30	2366	1303
" 28379.05	14.69	4636.08	3924.90	721.82	0.36	—	3468.99	24871.00	50	2158	1597
" 15775.55	14.22	1420.19	2450.25	431.54	0.30	—	2059.12	15760.00	37	1259	947
" 38095.84	18.97	3894.05	5053.54	914.49	0.38	—	6375.27	22216.00	42	2298	1647
" 17461.37	13.78	1390.19	2303.83	432.57	0.25	—	2344.59	14844.00	33	1454	1036
" 16976.62	8.37	1223.03	2697.54	399.03	0.16	—	1863.15	17179.00	65	2102	1367
" 18332.55	11.99	1366.35	2424.54	426.33	0.21	—	2420.73	14829.00	49	1621	1222
" 38896.34	17.04	3514.58	6073.56	985.72	0.36	4.00	4331.07	16364.00	58	2917	2419
Rmk. 213347.75	15.19	21540.30	29086.54	4895.36	0.30	4.00	31491.95	145609.00	364	16172	12038
\$ 52025.50	3.62	5124.82	6928.03	1165.10	0.07	0.96	7498.10	34668.75	—	—	—
HKr. 77206910.-	130197.00	19165460.00	14668100.00	3826450.00	5180.00	—	14226500.00	204911000.-	30	575	450
" 112315600.-	207736.00	31864140.00	16517850.00	6209100.00	7256.00	—	25010900.00	190091000.-	31	487	429
" 22842310.-	174372.00	5180620.00	3912200.00	1449300.00	6066.00	—	4295600.00	152337000.-	18	128	131
HKr. 212365320.-	167877.00	56210220.00	35098150.00	11484850.00	5941.00	—	43533000.00	547389000.-	79	1190	1010
\$ 2949.50	2.33	780.66	487.46	159.51	0.09	—	607.62	7709.71	—	—	—
SFr. 32169.73	36.14	1412.22	3404.41	971.86	0.50	55.25	—	15823.05	25	591	530
FFr. 30235.00	67.64	2407.05	4421.10	1518.20	1.48	—	—	11690.00	22	374	273
BFr. 39207.37	107.71	522.05	3763.33	1122.15	1.14	—	1293.30	8941.60	9	431	322
FFr. 33076.25	91.88	4023.00	3955.95	2973.60	2.33	—	—	9208.65	12	341	253
" 26916.60	100.06	1235.40	3049.85	1227.50	1.59	30.00	—	4878.70	11	216	193
Lire 18913.45	56.97	1153.70	2175.60	373.00	0.97	—	2727.85	36733.45	21	290	287
Pesetas 6212.75	25.46	893.65	1188.45	366.00	0.77	—	231.51	14306.90	12	200	216
Escud. 7841.06	46.95	234.80	1524.22	467.30	1.03	—	—	11233.10	6	167	145
FFr. 4184.30	39.11	—	1162.00	329.05	1.07	—	39.15	7414.25	12	122	95
SFr. 69844.20	21.96	4012.50	8835.19	2949.23	0.37	60.95	1032.40	45081.60	130	2732	2314
\$ 18480.00	4.24	738.76	1618.34	569.19	0.07	11.76	193.60	3669.53	—	—	—

## Statistical Report of the European Division of the General

Name of Conference or Mission	No. of Churches	Previous Membership	By baptism	By vote	By letter	Total gain	By apostasy	By death	By letter	Total losses	Net gain	Present Membership	Ordained Ministers	Licensed Ministers	Lic. Missionaries	Other Workers	Colporteurs	Total Workers	
1	2	3	4	5	6	7	8	9	10	11	12	13	14	15	16	17	18	19	
<b>Polish Union</b>																			
Posanian Conference	16	325	—	1	6	7	—	1	4	5	2	327	1	1	—	2	1	4	
Silesian "	18	582	39	2	15	56	—	1	17	18	38	620	4	3	4	1	10	22	
Warsaw Mission	82	632	13	—	18	31	6	2	19	27	4	636	5	1	4	2	15	27	
<b>Total</b>	<b>66</b>	<b>1539</b>	<b>52</b>	<b>3</b>	<b>39</b>	<b>94</b>	<b>6</b>	<b>4</b>	<b>40</b>	<b>50</b>	<b>44</b>	<b>1533</b>	<b>11</b>	<b>5</b>	<b>12</b>	<b>6</b>	<b>38</b>	<b>72</b>	
<b>Rumanian Union †</b>																			
Muntenia Conference	61	2340	7	5	68	80	19	5	61	85	-5	2335	3	1	3	3	—	10	
Moldavian "	46	1550	5	1	10	16	30	6	13	49	-33	1517	3	3	14	2	10	37	
Transilvanian "	72	1688	9	4	80	93	5	5	149	159	-66	1622	4	3	9	1	13	30	
Banat "	31	673	26	4	82	112	12	3	10	25	87	760	4	—	4	2	13	36	
<b>Total</b>	<b>210</b>	<b>6251</b>	<b>47</b>	<b>14</b>	<b>240</b>	<b>301</b>	<b>66</b>	<b>19</b>	<b>233</b>	<b>318</b>	<b>-17</b>	<b>6234</b>	<b>22</b>	<b>10</b>	<b>40</b>	<b>9</b>	<b>55</b>	<b>136</b>	
<b>Scandinavian Union</b>																			
Danish Conference	44	2504	14	2	3	19	33	11	23	67	-48	2456	3	5	9	2	1	6	
Norwegian "	51	2239	13	1	3	17	27	6	22	55	-38	2201	9	4	10	1	22	44	
Swedish "	43	1718	1	3	4	8	16	13	7	36	-28	1690	6	3	9	1	20	39	
Finnish "	25	1275	4	8	3	15	56	—	—	56	-41	1234	4	2	7	2	34	49	
<b>Total</b>	<b>163</b>	<b>7736</b>	<b>32</b>	<b>14</b>	<b>13</b>	<b>59</b>	<b>132</b>	<b>30</b>	<b>52</b>	<b>214</b>	<b>-155</b>	<b>7581</b>	<b>29</b>	<b>14</b>	<b>35</b>	<b>7</b>	<b>104</b>	<b>139</b>	
<b>West German Union</b>																			
Hanover Conference	48	2001	83	9	14	106	39	5	9	53	53	2054	2	3	5	5	1	8	
Hansa "	50	2069	97	6	15	118	11	7	11	29	89	2158	6	1	13	1	41	62	
Hess. Westphal. "	54	1827	61	6	7	74	55	4	12	71	3	1830	8	1	8	1	48	66	
Rhenish "	50	2928	62	11	15	88	56	11	32	99	-11	2917	7	1	12	1	67	88	
Thuringian "	61	2111	67	9	13	89	27	11	16	54	35	2146	7	1	10	1	41	60	
Holland "	26	709	34	3	4	41	12	1	4	17	24	733	3	3	4	—	21	31	
<b>Total</b>	<b>289</b>	<b>11645</b>	<b>404</b>	<b>44</b>	<b>68</b>	<b>516</b>	<b>200</b>	<b>39</b>	<b>84</b>	<b>323</b>	<b>193</b>	<b>11333</b>	<b>43</b>	<b>10</b>	<b>52</b>	<b>10</b>	<b>266</b>	<b>331</b>	
<b>Jugoslavian Union Mission</b>																			
Adriatic Mission	25	333	25	—	—	25	12	—	1	13	12	345	1	1	—	—	15	17	
Voivodina "	26	400	—	4	7	11	26	1	3	30	-19	381	1	1	—	—	26	28	
Sava "	7	133	9	—	—	9	3	2	3	8	1	134	1	—	—	1	11	18	
<b>Total</b>	<b>58</b>	<b>866</b>	<b>34</b>	<b>4</b>	<b>7</b>	<b>45</b>	<b>41</b>	<b>3</b>	<b>7</b>	<b>51</b>	<b>-6</b>	<b>860</b>	<b>3</b>	<b>2</b>	<b>—</b>	<b>1</b>	<b>52</b>	<b>58</b>	
<b>Bulgarian Mission</b>	13	216	7	—	—	7	8	2	1	11	-4	212	3	—	5	1	20	29	
<b>†† MISSIONS</b>																			
<b>East African Missions</b>																			
Kenya Mission	6	504	53	2	—	55	8	—	8	16	39	543	2	4	6	1	—	13	
Mwanza "	5	144	39	—	—	39	4	—	4	4	35	179	2	2	3	—	—	7	
Pare "	4	238	17	2	—	19	3	2	5	14	—	252	1	1	12	—	—	14	
<b>Ethiopian Union Mission</b>																			
Central Abyss. Mission	2	17	6	—	—	6	—	—	—	—	6	23	2	1	—	—	—	3	
Gallaland "	1	7	—	—	—	—	—	—	—	—	—	7	2	1	—	—	—	3	
<b>West African Missions</b>																			
* Sierra Leone Mission	4	151	—	—	—	—	1	—	—	1	-1	150	2	1	5	—	—	8	
Gold Coast "	4	268	72	—	—	72	4	6	—	10	62	330	2	2	8	—	—	12	
Nigeria Mission	13	358	—	—	—	—	1	2	—	3	-3	350	2	3	—	10	—	15	
<b>Egypto-Syrian Mission</b>																			
Egyptian Mission	3	74	7	—	—	7	1	—	—	1	8	82	1	1	4	1	—	8	
Syria Mission	2	52	4	2	—	2	9	—	—	—	8	60	1	—	4	2	—	7	
<b>Miscellaneous Missions</b>																			
** Eritrean Mission	1	8	7	—	—	7	—	—	—	—	7	15	1	1	—	—	—	2	
Faroe Islands Mission	1	20	1	—	—	1	—	—	—	—	1	21	1	—	—	—	—	5	
Greece "	3	78	—	—	—	—	1	1	—	2	-2	76	2	2	—	—	—	1	
Iceland "	4	223	—	—	—	—	—	—	—	—	—	223	1	1	1	—	—	4	
Madagascar "	1	2	—	—	—	—	—	—	—	—	—	2	1	—	—	—	—	1	
+ Mauritius "	7	181	—	4	—	4	—	1	—	1	3	184	1	—	3	3	1	8	
Mesopotamia "	1	13	4	—	—	4	—	—	—	—	4	17	1	—	—	—	—	2	
Persia "	5	140	—	—	—	—	—	—	1	1	-1	139	1	—	3	5	—	9	
Ruanda Mission	4	29	28	—	—	31	—	—	—	—	31	60	2	1	—	—	—	3	
Turkish Mission	1	52	—	—	—	—	—	—	—	—	—	52	1	—	—	3	—	4	
<b>Total</b>	<b>72</b>	<b>2554</b>	<b>238</b>	<b>10</b>	<b>7</b>	<b>255</b>	<b>23</b>	<b>12</b>	<b>9</b>	<b>44</b>	<b>211</b>	<b>2765</b>	<b>29</b>	<b>19</b>	<b>51</b>	<b>26</b>	<b>4</b>	<b>129</b>	

† The financial report is given for two months only (Jan. & Feb.) with the exception of columns 27 & 28 which represent the full quarter.

†† Report for fourth quarter 1925.

\* The financial report includes the third and fourth quarters.

\*\* The financial report here given is for the year 1925.

+ Includes third and fourth quarters of 1925.

— The considerable decrease in the number of workers in this report is due to the fact that the native teachers in the African Missions have not been included. — Previously they were only reported by some of the fields.



Conference of S. D. A. for the Quarter Ending March 31, 1926.

Tithe	Tithe per Capita	Offerings to Mission (except Sabbath Sch. Off.)	Sabbath School Offerings (12 Sabbaths)	13th Sabbath School Offerings	Mission Offerings per Capita and per Week	Special Offerings	Contributions for Local Church Work	Books and Periodical Sales	No. of Sabbath Schools	Membership	Average Attendance
20	21	22	23	24	25	26	27	28	29	30	31
Zl.	5959.21	18.33	450.82	1156.05	254.85	0.44	645.46	8645.17	25	352	305
"	7079.86	12.16	529.10	1728.48	295.84	0.33	1440.86	1461.55	31	784	689
"	6320.68	10.00	528.12	1842.41	345.93	0.27	672.50	5517.74	32	674	600
Zl.	19359.75	12.58	1506.04	4221.94	896.62	0.33	2758.32	15624.46	88	1760	1594
\$	2403.80	1.56	189.51	529.05	104.10	0.04	344.85	2083.94			
Lei	322809.10	138.00	68069.30	46941.25	206.00	3.63	168093.10	139545.00	61	2335	1501
"	158468.80	102.25	30712.50	24574.50	26.00	2.47	24131.50	194940.00	45	1700	1500
"	146816.90	87.00	25395.65	16886.15	651.50	1.86	34593.05	125931.00	152	1755	1300
"	85181.20	126.57	15087.52	12627.00	164.50	2.80	25050.80	128761.00	38	885	607
Lei	713276.00	126.60	139064.97	101028.90	1048.00	2.78	251852.95	589177.00	296	6625	4908
\$	2986.50	0.48	155.07	423.55	4.38	0.01	1119.35	2798.88			
D. Kr.	42121.65	16.82	1844.18	7267.23	3050.13	0.37	3216.35	43993.55	69	2312	1496
N. Kr.	40618.78	18.14	2102.08	6847.26	2216.58	0.38	3503.37	72496.20	57	1995	1499
S. Kr.	24707.99	14.38	573.88	3720.41	1621.92	0.27	239.43	29113.19	51	1489	1323
F. Mk.	89583.50	70.26	2500.95	12616.09	5062.61	1.22	6928.80	206437.00	45	1072	837
S. Kr.	105626.00	13.65	4172.75	17319.46	6826.10	0.28	60.01	6839.86	222	6813	5155
\$	28336.20	3.66	1119.42	4646.29	1831.24	0.07	16.08	1833.74			
Rmk.	31166.13	15.57	2807.35	4925.06	810.37	0.33	5040.84	32123.00	47	2235	1748
"	38358.82	18.78	3078.89	4604.91	960.09	0.32	4943.32	20925.00	49	2205	1602
"	26063.34	14.26	2263.09	4041.34	755.75	0.30	4532.07	27237.00	53	1647	1131
"	43316.39	14.79	3805.66	5033.66	664.01	0.25	1343.70	34636.00	49	2516	1667
"	33505.84	15.87	3330.73	4971.53	844.11	0.33	4519.30	27238.00	60	2379	1733
fl	770.62	1.08	128.89	870.14	108.67	0.12	—	6476.00	22	713	489
Rmk.	185357.02	15.96	15493.90	25033.33	4208.49	0.30	88.28	158168.00	280	11695	8420
\$	44284.20	3.80	3701.35	5965.53	1001.54	0.07	10.98	36437.76			
Dinar	53462.75	160.54	2048.00	1942.60	519.25	1.04	—	—	45	491	485
"	30718.25	76.79	2471.50	3223.00	1053.35	1.30	—	298400.70	36	470	460
"	16588.70	121.79	784.00	959.50	208.00	1.12	—	—	15	170	155
Dinar	100769.60	116.36	5803.50	6125.10	1780.60	1.17	—	298400.70	96	1131	1100
\$	1765.50	2.04	93.25	107.47	30.93	0.02	—	5328.57			
Lewa	57317.55	265.35	10115.65	11554.70	4918.15	9.47	9868.25	161138.00	16	235	195
\$	409.30	1.90	72.24	82.51	35.12	0.07	73.10	1249.12			
\$	1133.00	2.25	845.95	220.40	—	0.16	38.64	—	64	3369	3434
"	466.80	3.24	261.75	149.05	—	0.21	—	—	26	1095	1055
"	219.70	0.92	374.06	129.11	—	0.16	—	—	7	300	300
"	143.60	8.44	136.99	45.60	5.19	0.86	—	—	2	96	98
"	77.60	11.08	47.67	20.07	3.15	0.77	—	—	2	20	20
"	417.50	2.75	173.04	131.82	14.28	0.08	—	—	15	441	387
"	371.60	1.39	103.53	241.39	—	0.10	—	—	19	856	694
"	281.60	0.80	89.63	84.33	13.92	0.04	—	—	17	953	634
"	258.80	3.50	715.76	53.75	—	0.80	—	281.05	5	78	80
"	129.70	2.50	33.28	24.00	—	0.08	—	—	2	44	58
"	133.20	16.65	40.84	25.95	2.80	0.15	9.42	—	2	13	33
"	108.32	5.41	107.86	23.35	6.10	0.53	—	—	4	33	26
"	421.70	5.41	116.63	27.80	—	0.14	—	24.40	4	125	112
"	723.30	3.26	654.63	137.72	18.39	0.27	240.00	114.99	6	186	95
"	77.00	38.50	—	—	—	—	—	—	1	2	2
"	1355.60	7.49	1107.96	150.53	71.38	0.29	38.00	102.60	45	629	325
"	1152.00	88.61	369.01	65.98	6.09	2.61	—	—	1	32	27
"	245.40	1.75	28.48	30.51	12.75	0.04	—	—	6	242	215
"	112.00	3.86	471.56	46.21	—	1.37	—	—	3	743	609
"	140.20	2.70	76.37	20.17	5.71	0.15	9.55	—	1	75	58
\$	7973.62	3.12	5755.00	1633.11	159.76	0.22	48.06	523.04	232	9332	8252

## Statistical Report of the European Division of the General

Name of Conference or Mission	No. of Churches	Previous Membership	By baptism	By vote	By letter	Total gains	By apostasy	By death	By letter	Total losses	Net gain	Present Membership	Ordained Ministers	Licensed Ministers	Lic. Missionaries	Other Workers	Colporteurs	Total Workers
	2	3	4	5	6	7	8	9	10	11	12	13	14	15	16	17	18	19
<b>*ALLRUSSIAN UNION.....</b>													2	—	—	8	—	10
Allrussian Union District....	5	215	—	—	50	50	7	2	38	47	3	218	—	2	3	—	—	5
<b>North Russian Union.....</b>													1	—	—	2	—	3
Neva Conference.....	18	428	—	5	9	14	8	1	19	28	-14	414	—	4	3	—	—	7
North West Russ. Conf. ....	16	263	—	1	2	3	2	—	1	3	—	263	1	1	1	—	—	3
Upper Volga Conference....	13	260	—	2	—	2	22	—	4	26	-24	236	3	—	1	—	—	4
White Sea Mission.....	2	18	—	—	—	—	1	—	—	1	-1	17	—	—	—	—	—	—
<b>Total</b>	49	969	—	8	11	19	33	1	24	58	-39	980	5	5	5	2	—	17
<b>West Ukrainian Union.....</b>													1	2	—	3	—	4
Black Sea Conference.....	24	499	3	10	10	23	7	2	4	13	10	509	2	2	2	—	—	6
Central Dniepr Conference	34	1312	14	—	7	21	18	3	13	34	-13	1299	2	1	2	—	—	5
Podol Conference.....	50	1367	9	5	46	60	47	3	56	106	-46	1321	2	2	2	—	—	7
Wolynian Conference.....	27	476	5	—	27	32	10	1	32	43	-11	465	2	1	1	—	—	4
Upper Dniepr Mission.....	12	154	—	6	20	26	1	—	15	16	10	164	1	1	2	—	—	4
Lower Dniepr Conference....	25	577	—	4	7	11	48	1	6	55	-44	533	2	2	2	—	—	4
Crimean Mission.....	7	202	1	—	3	4	—	1	16	17	-13	189	2	2	1	—	—	4
Kiew Union District.....	4	176	—	—	2	2	2	—	5	7	-5	171	—	1	1	—	—	2
<b>Total</b>	183	4763	32	25	122	179	133	11	147	291	-112	4651	15	10	12	3	—	40
<b>South East Russian Union...</b>													1	—	—	3	—	4
Asow Conference.....	22	476	19	2	10	31	19	1	6	26	5	481	2	2	—	—	—	4
Cuban Black Sea Conference	25	588	6	1	3	10	64	4	14	82	-72	516	2	2	—	1	—	5
Central Caucasian Confer. ...	29	783	—	18	16	34	32	3	27	62	-28	755	2	1	1	—	—	4
Transcaucasian Mission....	12	271	14	6	1	21	16	2	3	21	—	271	3	1	1	—	—	5
Don Mission.....	19	496	13	6	6	25	12	4	9	25	—	496	3	1	1	—	—	5
<b>Total</b>	107	2614	52	33	36	121	143	14	59	216	-95	2519	13	7	3	4	—	27
<b>East Russian Union.....</b>													1	—	—	2	—	3
Volga Conference.....	27	666	—	1	23	24	10	2	44	56	-32	632	2	—	—	—	—	4
Saratov-Tambov Confer. ...	12	293	—	1	11	12	2	—	2	4	8	301	2	1	1	—	—	4
Samara-Orenburg Mission....	5	107	1	—	—	1	1	—	4	5	-4	103	1	1	1	—	—	2
Turkestan Mission.....	10	327	4	1	6	11	—	1	7	8	3	330	1	1	1	—	—	3
<b>Total</b>	54	1398	5	3	40	48	13	3	57	73	-25	1368	7	2	5	2	—	16
<b>Siberian Union.....</b>													1	—	—	2	—	3
Omsk Mission.....	6	194	—	—	—	—	1	—	2	3	-3	191	—	—	1	—	—	1
Central Siberian Conference	37	632	6	—	6	12	7	2	15	24	-12	620	2	1	—	—	—	3
Irtysh Conference.....	23	522	4	13	97	114	13	—	105	113	-4	518	2	—	2	—	—	4
West Siberian Conference....	16	456	1	2	9	12	2	1	—	3	9	465	2	—	3	—	—	5
North Siberian Mission....	4	180	11	—	6	17	2	—	2	2	15	195	1	—	1	—	—	2
East " ".....	5	102	—	11	7	18	—	—	4	4	14	116	1	—	1	—	—	2
<b>Total</b>	91	2086	22	26	125	173	25	3	126	154	19	2105	9	1	8	2	—	20
<b>Dalne Wostotschn. Un. Miss.</b>													3	—	2	—	—	5
Coastal Region.....	24	366	43	2	73	118	3	2	23	28	90	456	—	—	—	—	—	—
Amur Mission.....	1	5	—	—	6	6	—	—	—	—	6	11	—	—	—	—	—	—
Transbaikalia.....	3	23	—	—	3	3	—	—	2	2	1	24	—	—	—	—	—	—
<b>Total</b>	28	394	43	2	82	127	3	2	25	30	97	491	3	—	2	—	—	5
<b>Grand Totals for Russia</b>	517	12434	154	97	466	717	357	36	476	869	-152	12282	54	27	38	21	—	140

\* Report for fourth quarter 1925.

**Our First Church in Transjordan.**

Our hearts are cheered at the news coming to us of the first-fruits gathered at Salt in Transjordan. Elder Nils Zerne, resident at Beyrout,

Syria, in a recent letter gives the following report: "Last Monday night I returned home from a trip to Transjordan. Some people had just been massacred near Sidon when passing in an automobile and so our driver and the passengers who were

Conference of S. D. A. for the Quarter Ending March 31, 1926.

Tithe	Tithe per Capita	Offerings to Mission (except Sabbath-Sch. Off.)	Sabbath School Offerings (12 Sabbaths)	13th Sabbath School Offerings	Mission Offerings per Capita and per Week	Special Offering	Local Church Work	Books Sales	S. S.	Membership	Average Attendance
20	21	22	23	24	25	26	27	28	29	30	31
Rbl. 2649.61 \$ 1365.78	12.32 6.35	929.00 478.86	306.93 157.90	16.39 8.45	0.45 0.23	— —	403.80 208.10	— —	5	225	
Rbl. 1842.66 734.72 1209.92 — —	4.80 2.79 4.65 —	565.97 103.88 247.66 —	191.87 81.85 104.26 —	18.57 15.98 14.87 —	0.14 0.06 0.11 —	— — — — — — —	106.00 98.00 78.70 —	— — — — — — —	18 16 13 —	397 260 248 —	
Rbl. 3787.30 \$ 1952.22	3.90 2.00	916.51 472.42	377.98 194.89	49.87 25.45	0.11 0.06	— —	282.70 145.70	— —	49	905	
Rbl. 1875.90 3013.97 2198.94 1344.48 595.77 1824.97 1013.66 794.98	3.75 2.30 1.60 2.82 3.86 3.16 5.02 4.51	205.16 425.10 366.12 173.25 125.44 194.63 164.46 279.42	202.02 258.68 287.19 119.78 91.02 196.97 121.14 110.54	25.06 34.24 34.88 20.52 10.09 72.07 8.07 8.91	0.07 0.04 0.04 0.05 0.11 0.06 0.11 0.17	— — — — — — — — — — — — — — —	194.90 149.20 358.50 112.70 42.60 124.00 89.00 58.60	— — — — — — — — — — — — — — —	24 34 50 27 12 25 7 4	567 2143 1123 488 153 566 205 172	
Rbl. 12662.67 \$ 6527.14	2.65 1.37	1933.58 996.69	1387.34 715.12	213.84 110.25	0.06 0.03	— —	1129.50 582.20	— —	183	5417	
Rbl. 1850.29 1010.89 1690.49 1615.75 2849.97	3.89 1.72 2.15 5.96 5.75	285.66 173.08 331.09 351.87 446.17	233.50 173.49 231.00 225.18 220.73	12.34 7.94 22.86 12.74 38.36	0.09 0.05 0.06 0.17 0.11	— — — — — — — — —	144.30 59.40 72.60 67.80 117.60	— — — — — — — — —	22 25 29 12 19	527 578 824 293 544	
Rbl. 9017.39 \$ 4648.14	3.45 1.78	1587.87 818.50	1039.90 558.72	94.74 48.82	0.08 0.04	— —	461.70 238.00	— —	107	2766	
Rbl. 2124.02 1187.99 586.53 1459.64	3.19 4.05 5.69 4.42	185.49 157.94 146.72 135.40	141.84 61.33 39.25 156.63	22.47 8.79 4.18 10.72	0.04 0.06 0.14 0.07	— — — — — — —	92.10 24.10 62.10 42.60	— — — — — — —	27 12 5 10	673 233 87 352	
Rbl. 5358.18 \$ 2761.97	3.84 1.97	625.55 322.45	399.05 205.70	46.16 23.76	0.06 0.03	— —	220.80 118.80	— —	54	1345	
Rbl. 568.43 970.91 840.21 853.47 676.81 277.48	2.92 1.53 1.61 1.82 3.76 2.72	114.62 101.84 78.58 39.00 50.32 48.49	75.58 106.29 110.91 60.90 75.74 53.02	6.82 18.44 4.57 1.17 4.10 3.59	0.08 0.03 0.03 0.02 0.05 0.07	— — — — — — — — — — —	44.70 119.70 86.10 42.10 34.40 52.50	— — — — — — — — — — —	6 37 23 16 4 5	216 585 532 371 192 153	
Rbl. 4187.31 \$ 2158.40	2.00 1.03	428.35 220.80	432.44 248.68	38.69 19.94	0.03 0.01	— —	329.50 169.80	— —	91	1999	
Rbl. 1504.25 5.27 253.96	4.10 0.44 10.58	105.94 — 9.66	404.18 8.80 31.10	29.11 — 3.46	0.11 — 0.15	— — — — —	34.80 — —	— — — — —	24 1 3	493 12 30	
Rbl. 1763.48 \$ 909.00	3.59 1.85	115.60 59.58	444.08 228.90	32.57 16.79	0.12 0.06	— —	34.80 17.90	— —	28	535	
Rbl. 39425.94 \$ 20322.65	3.17 1.63	6536.46 3369.30	4481.12 2309.85	491.76 253.48	0.07 0.04	— —	2862.80 1475.50	— —	517	13192	10400

with me in the car were rather excited, especially as we had been delayed and had to pass through that region at midnight. The Lord, however, did not allow anyone to trouble us.

On my way down I met Elder Keough at Jerusalem and we then traveled together to Salt

where we remained about a week. You would surely enjoy another visit to that country. The brethren are sincere and devoted. They have had to overcome many obstacles, but they love the truth.

On April 2 we started with our new converts at 5.30 in the morning and marched to the brook

Recapitulation for Quarter

Name of Conference or Mission	No. of Churches	Previous Membership	By baptism		By vote		By letter		Total gains	By apostasy	By death		Total losses	Net gain	Present Membership	Ordained Ministers	Licensed Ministers	L.c. Missionaries	Other Workers	Colporteurs	Total Workers
1	2	3	4	5	6	7	8	9	10	11	12	13	14	15	16	17	18	19	20	21	
<b>1. European Division</b>																					
2. Baltic Union	65	3397	45	30	8	83	20	8	1	29	54	3451	18	8	11	6	24	67			
3. British Union	74	4206	8	12	25	45	28	8	26	62	-17	4189	28	8	41	9	107	193			
4. Central European Union	197	8773	243	14	45	302	91	24	58	173	129	8902	43	19	29	20	178	289			
5. Czechoslovakian Union	74	2033	65	8	14	87	31	8	14	53	34	2067	12	6	4	7	57	86			
6. East German Union	369	14874	350	29	283	662	143	42	305	490	172	14546	66	49	26	19	294	454			
7. Hungarian Union	52	1265	95	7	8	110	22	7	10	39	71	1336	6	4	14	5	68	97			
8. Latin Union	93	8180	63	7	28	98	24	16	33	73	25	3205	42	26	45	3	82	198			
9. Polish Union	66	1539	52	3	39	94	6	4	40	50	44	1583	11	5	12	6	38	72			
10. Rumanian Union*	210	6251	47	14	240	301	66	19	233	318	-17	6234	22	10	40	9	55	136			
11. Scandinavian Union	163	7736	32	14	13	59	132	30	52	214	-155	7581	29	14	35	7	104	189			
12. West German Union	289	11645	404	44	68	516	200	39	84	323	198	11838	43	10	52	20	266	381			
13. Jugostavian Union Mission	58	866	34	4	7	45	41	3	7	51	-6	860	3	2	1	1	52	58			
14. Bulgarian Mission	13	216	7	—	—	7	8	2	1	11	-4	212	3	—	5	1	20	29			
15. Missions**	72	2554	233	10	7	255	23	12	9	44	211	2765	29	19	51	26	4	129			
16. Russian Unions**	517	12434	154	97	466	717	357	86	476	869	-152	12232	54	27	38	21	—	140			
<b>Totals 1st Qtr. 1926</b>	2312	80469	1837	293	1251	3381	1192	258	1349	2799	582	81051	421	207	403	174	1349	2544			
„ 1st Qtr. 1925	2152	75421	1881	240	733	2859	896	214	773	1960	899	76320	394	160	364	201	1485	2604			
„ 1st Qtr. 1924	1975	69305	2545	343	571	3464	630	179	693	1939	1525	70830	320	150	230	221	945	2031			
„ 1st Qtr. 1923	1816	62719	1812	292	803	2907	593	154	852	2115	792	63511	309	170	233	223	910	1952			

\* The financial report is given for two months only (Jan. and Febr.) with the exception of Columns 27 and 28 which represent the full quarter. \*\* Report for the fourth quarter of 1925.

Financial Report of the European Division

	Tith e		Sabbath School Offerings		13th. Sabbath Offerings		Weekly Offerings		Harvest Ingathering	
	Loc. Curr'y	Dollars	Loc. Curr'y	Dollars	Loc. Curr'y	Dollars	Loc. Curr'y	Dollars	Loc. Curr'y	Dollars
	1	2	3	4	5	6	7	8	9	10
<b>East African Union Mission</b>										
Kenya Mission	£ 331. 6. 8	\$ 1133.00	£ 45. 7. 9	\$ 220.40	—	—	—	—	—	—
Mwanza Mission	„ 95. 2. 6	„ 466.80	„ 30.14. 2	„ 149.05	—	—	—	—	—	£ 12. 5. 2 \$ 59.52
Pare Mission	„ 45. 0.10	„ 219.70	„ 26.11. 7	„ 129.11	—	—	—	—	—	—
<b>Ethiopian Union Mission</b>										
Central Abyss. Miss.	„ 29.11. 8	„ 143.60	„ 10. 0. 0	„ 48.60	£ 1. 1. 5	\$ 5.19	£ 2.15. 8	\$ 13.50	„ 0.16. 5	„ 3.98
Galland Mission	„ 15.19. 2	„ 77.60	„ 4. 2.10	„ 20.07	„ 0.12.11	„ 3.15	„ 2. 7.10	„ 11.64	—	—
<b>West African Missions</b>										
Sierra Leone *)	„ 85.19. 2	„ 417.50	„ 27. 2.11	„ 131.82	„ 2.18.10	„ 14.28	—	—	„ 4.11. 7	„ 22.24
Gold Coast Mission	„ 76.10.10	„ 371.60	„ 49.14. 3	„ 241.39	—	—	—	—	„ 1.15. 3	„ 8.56
Nigeria Mission	„ 58. 0. 0	„ 281.60	„ 17. 7. 4	„ 84.93	„ 2.17. 4	„ 13.92	—	—	„ 4.16. 9	„ 23.49
<b>Egypto Syrian Mission</b>										
Egyptian Mission	£ E 52,690	„ 253.80	£ E 11,626	„ 55.75	—	—	£ E 4,085	„ 19.66	£ E 102,165	„ 496.00
Syrian Mission	£ E 25,960	„ 129.70	£ E 4,875	„ 24.37	—	—	—	—	£ E 6,325	„ 33.23
<b>Miscellaneous Missions</b>										
Eritrea Mission **)	Lir. 3455.00	„ 133.20	Lira 674.85	„ 25.95	Lira 73.00	„ 2.80	Lira 167.50	„ 6.44	—	—
Faroe Islands	DKr. 417.26	„ 103.32	DKr 89.94	„ 23.35	DKr. 23.51	„ 6-10	DKr. 49.00	„ 12.72	DKr 242.45	„ 62.94
Greece	Dr. 21703.80	„ 421.70	Dr 1432.15	„ 27.80	—	—	—	—	Dr. 844.50	„ 16.39
Iceland	IKr. 4101.00	„ 723.30	IKr. 765.79	„ 137.72	IKr. 102.24	„ 18.39	—	—	IKr 3159.36	„ 568.28
Madagascar	Rs. 221.00	„ 77.00	—	—	—	—	—	—	—	—
Maoritius *)	Rs. 3910.00	„ 1355.60	Rs. 439.70	„ 150.53	Rs 200.11	„ 71.33	—	—	Rs. 1816.34	„ 629.89
Mesopotamia	£ 237. 5. 0	„ 1152.00	£ 13.11. 9	„ 65.98	£ 1. 5. 1	„ 6.09	—	—	—	—
Persia	Krs. 2123.00	„ 245.40	Krs. 264.05	„ 30.51	Krs. 110.35	„ 12.75	Krs. 42.00	„ 4.85	—	—
Ruanda-Urundi	£ 23. 1. 0	„ 112.00	£ 9.10. 4	„ 46.21	—	—	—	—	£ 0. 9. 0	„ 2.18
Turkey	Ltq. 270.00	„ 140.20	Ltq. 38.84	„ 20.17	Ltq. 11.00	„ 5.71	Ltq. 6.51	„ 3.88	—	—
		\$ 7973.62		\$ 1633.11		\$ 159.76		\$ 72.19		\$ 1926.75

\*) Report for third and fourth quarters.

\*\*) Report for the year 1925.

Ending March 31, 1926.

Tithe	Tithe per Capita	Offerings to Mission (except Sabbath Sch. Off.)	Sabbath School Offerings (12 Sabbaths)	18th Sabbath School Offerings	Mission Offerings per Capita and per Week	Special Offering (Big Week)	Contributions for Local Church Work	Books and Periodical Sales	No. of Sabbath Schools	Membership	Average Attendance
20	21	22	23	24	25	26	27	28	29	30	31
5461.60	1.61	441.11	770.70	242.78	0.08	—	264.35	2090.17	100	3444	2435
27057.50	6.43	1044.23	4304.92	1471.46	0.12	96.13	3834.70	20424.63	118	4383	3336
32763.50	3.78	2564.46	4713.91	969.77	0.07	—	7295.20	26676.87	241	9468	6914
4807.30	2.86	546.20	609.54	173.89	0.05	10.85	451.58	6177.01	86	2049	1616
52025.50	3.62	5124.82	6928.03	1165.10	0.07	0.96	7498.10	34668.75	364	16172	12038
2949.50	2.33	780.66	487.46	159.51	0.09	—	607.62	7709.71	79	1190	1010
13430.00	4.24	758.76	1613.84	569.19	0.07	11.76	198.60	8669.58	130	2732	2314
2403.80	1.56	189.51	529.05	104.10	0.04	—	344.85	2033.94	88	1760	1594
2986.50	0.43	155.07	423.53	4.38	0.01	6.43	1119.35	2793.88	296	6625	4908
28386.20	3.66	1119.42	4646.29	1831.24	0.07	16.08	1833.74	39561.59	222	6318	5155
44284.20	3.80	3701.35	5965.53	1001.54	0.07	10.98	4853.38	36437.76	280	11695	8420
1765.50	2.04	93.25	107.47	30.93	0.02	—	—	5328.57	96	1131	1100
409.30	1.90	72.24	82.51	35.12	0.07	—	73.10	1249.12	16	235	195
7973.62	3.12	5755.00	1633.11	159.76	0.22	48.06	287.55	523.04	232	9332	8252
20822.65	1.63	3369.30	2809.85	253.48	0.04	—	1475.50	—	517	13192	10400
\$ 247026.67	3.06	25715.38	35130.26	8172.25	0.06	201.25	30137.62	194344.57	2865	90226	69637
" 242279.27	3.17	22342.70	34541.80	8037.43	0.06	717.73	16303.89	220089.38	2650	84879	67382
" 169181.10	2.40	20847.62	24302.54	6763.07	0.07	11248.48	11051.51	150187.76	2335	74193	59343
" 125114.39	1.96	14106.85	15704.65	3556.12	0.04	233.14	1207.51	96034.77	2131	61513	48073

Missions for the 4th. Quarter 1925 specified.

Annual Offerings	Miscellaneous Off.	Week of Sacrifice	Y. P.'s Collection West Africa	Total Offerings to Foreign Miss.	Percentage of Offer. of Tithe	"Big Week"-Fund
Loc. Curr'y Dollars	Loc. Curr'y Dollars	Loc. Curr'y Dollars	Loc. Curr'y Dollars	Loc. Curr'y Dollars	% of Tithe	Loc. Curr'y Dollars
6	7	8	9	10	11	12
£ 134.18. 6 \$ 655.50	—	£ 39. 5. 0 \$ 190.45	—	£ 219.11. 3 \$ 1066.35	94.1%	£ 7.19. 2 \$ 38.64
" 81.18. 3 " 154.50	—	" 9.16. 0 " 47.73	—	" 84.13. 7 " 410.80	88.0%	—
" 77. 0. 2 " 374.06	—	—	—	" 103.11. 9 " 503.17	229.0%	—
" 15. 2.10 " 73.44	—	" 9.10. 0 " 46.07	—	" 39. 6. 4 " 190.78	132.8%	—
" 2. 2.10 " 10.48	—	" 5. 5. 0 " 25.55	—	" 14.11. 5 " 70.89	91.3%	—
" 2. 8. 0 " 11.65	—	" 28.13. 2 " 139.15	—	" 64.14. 6 " 319.14	76.4%	—
" 2. 0. 0 " 9.71	£ 0.17. 9 \$ 4.29	" 16.13. 6 " 80.97	—	" 71. 0. 8 " 344.92	92.8%	—
" 8.14. 2 " 41.86	—	" 5. 0. 0 " 24.28	—	" 38.15. 7 " 187.88	66.7%	—
£E 23,970 " 116.30	—	£E 12,642 " 33.80	—	£E 154,488 " 771.51	298.2%	—
—	—	—	—	£E 11,700 " 56.65	44.4%	—
Lira 346.35 " 13.32	Lira 206.00 " 7.92	Lira 203.60 " 7.83	Lira 138.50 \$ 5.83	Lira 1671.30 " 69.59	48.2%	Lira 245.00 \$ 9.42
DKr. 124.00 " 32.20	—	—	—	DKr. 528.90 " 137.31	126.7%	—
—	Dr. 921.10 " 17.88	Dr. 4240.10 " 32.36	—	Dr. 7437.85 " 144.43	34.2%	—
IKr. 324.26 " 61.54	IKr. 72.85 " 13.11	IKr. 65.00 " 11.70	—	IKr. 4508.00 " 310.74	111.3%	—
Rs. 669.96 " 232.41	Rs. 57.10 " 19.87	Rs. 599.84 " 207.87	Rs. 51.67 " 17.92	Rs. 3732.55 " 1329.87	96.7%	—
£ 26.15.11 " 130.11	£ 44. 9.10 " 215.84	£ 4.15. 0 " 23.06	—	£ 90.6. 19 " 441.08	35.2%	—
Krs. 120.40 " 13.92	—	—	Krs. 84.10 " 9.71	Krs. 536.80 " 71.74	25.2%	—
£ 73. 8. 1 " 356.45	£ 23. 5. 2 " 112.93	—	—	£ 106.12. 7 " 517.77	462.2%	—
Ltq. 133.68 " 69.41	Ltq. 6.38 " 3.58	—	—	Ltq. 196.91 " 102.25	72.9%	—
\$ 2356.86	\$ 395.42	\$ 970.82	\$ 32.96	\$ 7547.87	93.7%	\$ 48.06

## Report of the Home Missionary

	Baltic Union		British Union		Bulgarian Mission		Central Eu-rop. Union		East Ger-man Union		West German Union		** Czecho-slov-ak Union		Greek Mission	
	Adult	Y. P.	Adult	Y. P.	Adult	Y. P.	Adult	Y. P.	Adult	Y. P.	Adult	Y. P.	Adult	Y. P.	Adult	Y. P.
No. of Church. & Comp. Reporting	73		107		13		—		368		289		74		4	
Members of Y. P. Soc. (incl. in Church Memb.)	65		73		12		—		361		—		74		2	
Total	3451		4189		212		8902		14546		11838		2067		76	
No. of Church observing Miss. Sabbath	677		1839		21		1517		2644		2069		348		—	
Hold. weekly prayer meet. % of Members Reporting	38	20	67	47	12	8	—	—	—	—	—	—	74	—	2	—
	38 %		27 %		64 %	0 %	52 %		62 %		65 %		60 %		—	
<b>Report of Missionary Work:</b>																
1) No. of Pers. Reporting	968	345	675	456	116	20	3797	821	6420	2538	6461	1178	883	348	—	—
2) " Doing Bible or Gosp. Meet. Work	222	256	61	2	113	5	—	—	554	53	—	—	123	—	—	—
3) " Report. Med. Miss. Work	335	—	110	18	38	2	—	—	283	113	—	—	—	—	—	—
4) " Liter. Work	543	224	348	52	59	17	—	—	—	—	—	—	—	—	—	—
5) Souls Won	2	5	3	4	—	—	84	12	129	50	75	19	—	—	—	—
a) No. of Miss. Visits	4807	1757	3839	1618	736	36	14275	53	19654	5900	24078	4096	6296	—	4	148
b) " Bible Readings	3901	926	333	183	823	33	13777	2161	21691	8019	19208	2960	7750	—	—	73
c) " Pers. tak. to Serv. Work	387	203	282	126	370	4	—	—	726	201	—	—	493	—	—	—
d) Hours of Christ. Help. Treatments Given	1216	349	8686	8704	473	4	3166	873	—	11	—	—	—	—	—	—
e) Bouquets Given	720	207	1489	180	127	1	655	164	1923	480	1431	337	400	—	48	—
f) Periodicals Distributed	—	—	624	256	25	—	—	—	—	—	—	—	—	—	—	—
g) Tracts	9623	3396	59952	22774	960	108	76753	24973	132019	56511	130539	35333	7263	—	—	—
h) New Subscriptions to Periodicals	1605	402	23465	9013	62	—	2744	210	2780	389	3812	472	1410	—	12	—
i) Books Distributed	485	98	130	28	49	5	126	—	592	118	207	—	126	—	—	—
k) Miss. Letters Written	1302	293	1921	1620	234	4	910	106	1009	211	1046	158	383	—	106	—
l) " Received	819	435	1447	950	206	1	2730	552	2670	969	2355	545	839	—	—	25
Offerings for Home Miss. Work	358	197	906	504	135	4	1308	300	1170	576	1196	298	566	—	—	16
	\$ 279.	—	\$ 522.	73	—	—	\$ 822.	13	—	—	\$ 1001.	30	\$ 363.	11	—	—

\* Report for the 4th. Quarter 1925.

\*\* Including Y. P. and Adult.

## Report of the Missionary Volunteer Department\* of the

	Baltic Union	British Union	Bulgar. Miss.	Central European Union	Czecho-slovak Union	East German Union	Hungarian Union	Iceland Mission
No. of Societies	33	66	2	176	22	379	14	—
Total Membership of Societies	677	1839	31	3024	348	5739	287	—
Members reporting	345	453	20	1113	139	2538	221	—
<b>MISSIONARY WORK:</b>								
1 Missionary and Sick Visits	1757	1618	36	873	743	5900	1559	—
2 Bible Readings	926	183	11	2161	769	8019	3050	—
3 Hours of Christian Help Work	349	8704	4	—	127	11	426	—
4 Treatments given	207	180	1	164	95	480	505	—
5 Subscriptions to Periodicals	98	28	5	app. 200	13	118	—	—
6 Papers and Magazines distributed	3396	22774	108	24973	1386	56511	372	—
7 Books distributed	298	1620	4	106	105	211	20	—
8 Tracts distributed	402	9085	—	210	292	339	119	—
9 Letters written	435	950	3	552	159	969	309	—
10 Letters received	197	504	2	300	100	576	156	—
11 SOULS WON	13	1	—	12	1	50	21	—

\* Including Junior Members.

Zarqa which we reached in 1½ hours. It was a really splendid and enjoyable walk in this early morning hour. Mount Gilead at this time of the year is especially wonderful. It is covered with a multitude of wild flowers, glowing in all colours of the rain-bow. Corn and grass is also growing plentifully this year, because of the abundant rain during the winter — the rainy season in this country. It must have been similar, or even better, in

the days of the Reubenites, when they said to Moses: "Behold, this is a land for cattle...let this land be given unto thy servants for possession." Twelve persons were baptized by Bro. Keough at this place, 7 brethren and 5 sisters, all members of one family. Brother Michael Haddad was the first one. He has had a hard struggle to quit tobacco, but he has finally overcome. The oldest in age but youngest in faith was his cousin

Department for the First Quarter 1926.

Hungarian Union	† Iceland Mission	Jugoslav. Un. Miss.	Latin Union	† Mauritius Mission	Polish Union	Rumanian Union	Scandinavian Union	Turkish Mission	Totals	Grand Totals	1st Qu. 1925										
Adult Y.P.	Adult Y.P.	Adult Y.P.	Adult Y.P.	Adult Y.P.	Adult Y.P.	Adult Y.P.	Adult Y.P.	Adult Y.P.	Adult Y.P.	both	both										
52	4	—	93	7	66	258	284	1	—	—	—										
47	—	—	77	6	—	121	145	1	—	—	—										
1836	223	860	3205	184	1533	6234	7581	52	—	—	—										
287	80	—	774	159	247	884	826	—	—	—	—										
52	4	—	14	7	—	121	280	1	—	—	—										
71 %	4	35 %	30 %	124 %	48 %	45 %	21 %	58 %	—	49 %	—										
729	221	—	303	—	704	243	149	81	576	178	2088	697	1273	295	27	5	25169	7426	32595	—	
474	108	—	235	—	—	—	—	—	193	36	—	—	520	1	—	—	2496	460	2956	—	
122	17	—	—	—	—	—	—	—	229	50	—	—	239	—	—	—	1466	200	1666	—	
260	50	—	315	—	—	—	—	—	281	45	—	—	562	1	—	—	2732	388	3170	—	
41	21	—	34	—	5	—	—	—	11	—	—	—	48	—	—	—	407	111	518	659	
6410	1559	—	2177	14	4065	1183	513	142	3482	956	16783	3619	4681	909	91	20	111891	22010	133901	150253	
9577	3050	—	3928	13	3364	839	922	659	5402	1034	27258	4356	3470	490	64	14	121968	24810	146778	156090	
330	6	—	450	81	103	—	—	—	11	23	2904	339	380	236	—	—	6386	1219	7605	—	
458	426	—	462	384	—	—	—	—	10	131	487	113	1945	407	—	42	17933	11449	29382	—	
805	505	—	78	—	476	101	74	23	43	16	1537	218	609	256	49	—	10464	2498	12957	8287	
2993	372	1347	545	3	14885	5365	517	325	2157	556	15653	7485	36057	3931	4	4	491267	162191	653458	691731	
647	119	—	237	50	1456	630	1103	223	156	73	3192	448	24143	3455	67	—	66941	15484	82425	90336	
4	—	—	5	—	305	91	13	—	6	—	198	62	1753	133	—	2	3999	537	4536	—	
269	20	—	1537	85	1388	269	322	27	55	21	928	340	2333	254	41	3	13344	3411	17255	20510	
546	309	13	419	41	1242	288	30	15	183	39	990	603	2461	593	18	—	16968	5365	22333	21747	
339	156	—	233	26	595	126	23	13	92	27	487	397	800	224	7	2	8215	2866	11081	10826	
\$ 22.48	—	—	\$ 545.15	—	—	—	\$ 45.07	—	\$ 82.45	—	\$ 257.12	—	—	—	—	—	—	—	—	—	—

+ Report for the 4th. Quarter 1925.

European Division for the First Quarter of 1926.

Jugo-slavian Miss.	Latin Union	Mauritius Miss. *	Polish Union	Persian Miss.	Rumanian Union	Russian Unions	Scandinavian Union	West German Union	Turkish Miss.	Totals for the first quarter 1926	Totals for the first quarter 1925
4	62	11	21	—	57	—	50	308	1	1206	904
70	970	159	247	—	834	1166	914	4168	20	20043	15975
—	243	43	178	—	697	—	316	1825	—	8131	6940
14	1138	44	956	—	3619	234	909	4464	20	23929	27171
13	339	659	1034	—	5358	451	430	2931	14	26898	23856
—	384	454	131	—	309	—	407	1052	42	12400	—
—	101	28	16	—	218	—	256	337	—	2588	1839
—	91	—	—	—	62	—	133	app. 300	2	1050	867
3	5365	325	556	—	7485	—	3931	46232	4	173421	203869
85	269	27	21	—	340	—	254	512	3	3870	5503
50	630	238	73	—	448	—	3436	166	—	15438	17390
41	238	15	39	—	603	—	593	553	—	5509	5362
26	126	13	27	—	397	—	224	302	2	2952	2760
—	3	—	—	—	6	—	—	19	—	126	198

\* Report for the fourth quarter.

and brother-in-law, Nassar Soliman, who is sixty years of age. Also two sons of Brother Michael and two sons of his deceased brother, one daughter and four married women were in this number. After the baptism, we held the ordinances out in the open country where we spent the whole day returning again to Salt at sun-set. Years have passed since the work was first started and we are glad for these first-fruits. The Word of God does in-

deed not return void. Here in Beyrout we have baptized three this year and five more are ready for baptism. At Aleppo there are also five waiting for this rite."

Thus the Advent Message has gained a definite foothold in a new country, the beginnings of which, however, date back some thirteen years. It was in the spring of 1913 while the writer was making his first itinerary to Mesopotamia, that he sent

Harvest Ingathering Campaign 1925 in the European Division.

	Date	Goal 1925	Raised 1925	% of Memb. taking part.	Amount per capita	No. of papers ordered	Languages	1924 raised	Method: I. Bus. house solicitor. II. house to house work
Baltic Union	October 1 - November 15.	\$ 2807.80	\$ 2421.33		\$ 0.76	22200	Lettonian Esthonian German Hebrew	\$ 2261.55	
British Union	September 1 - October 14.	" 29160.00	" 37219.48	70 %	" 9.18	112500	English	" 29942.42	
Central European Union	September 1 - December 31.	" 14285.70	" 13867.70	69 %	" 1.65	105270	German	" 10695.12	II
East German Union	August 22 - December 31.	" 24528.80	" 27229.71	70 %	" 1.98	210000	German	" 22055.86	II
West German Union	September 5 - September 20.	" 28571.40	" 25395.78	75 %	" 2.26	180000	Dutch German	" 21729.15	I
Czechoslovak. Union	October 1 - November 30.	" 3030.80	" 2349.71	80 %	" 1.26	27000	German Czech. Polish Hungarian	" 1426.37	I & II
Latin Union	September 1 - December 31.	" 15384.60	" 16086.51		" 5.32	99000	French German Italian Portuguese Spanish Flemish	" 14834.09	I
Polish Union	October - December	" 800.00	" 713.15	80 %	" 0.52	21000	Polish German	" 1233.93	I & II
Rumanian Union	September 5 - November 30.	" 1456.30	" 1173.31	70 %	" 0.22	22000	Rumanian Hungarian German	" 1132.73	II
Scandinavian Union	September 1 - November 1.	" 18000.00	" 18746.40	40 %	" 2.57	85000	Norwegian Danish Swedish Finnish	" 13059.76	
Bulgarian Union	September 15 - December 6.	" 148.10	" 278.60	50 %	" 1.36	3250	Bulgarian German French	" 119.94	II
Hungarian Union	November 1 - December 31.	" 1500.00	" 2032.34	65 %	" 1.91	9500 calendars 500 H. I. P.	Hungarian German	" 2179.83	II
Jugoslavian Union Mission Missions			" 1.87					" 697.59	
		\$ 139167.50	\$ 149898.64		\$ 2.35 +			\$ 123274.59	
Total cost of papers			" 34012.73					" 26288.16	
Net gain			\$ 115885.91					\$ 96986.43	

+ Based on the membership in the European Division excluding Russia.

Specification of Mission Offerings for the First Quarter 1926.

	Sabb. Sch. Off. 12 Sabbaths	13th (Sabbath Off.)	Weekly Off.	Harvest Ing. Offerings	Annual Off.	Miscell. Off.	Week of Sacrif. Offerings	Y. P.'s Coll. for West Africa	Total Off. for Foreign Missions	Percentage of Off. of 11th	"Big Week" Funds	Eu. Relief
	1	2	3	4	5	6	7	8	9	10	11	12
1. Baltic Union	770.70	242.78	321.05	—	68.70	—	—	51.36	1454.59	26.6 %	—	—
2. British	4304.92	1471.46	—	144.29	154.32	332.68	—	412.94	6320.61	25.2 %	—	—
3. Central Europ. Union	4713.91	969.77	1643.93	49.45	92.46	763.52	4.69	10.41	8243.14	25.2 %	—	—
4. Czechoslovakian "	609.54	173.89	206.35	307.04	12.36	—	1.18	19.27	1329.63	27.6 %	10.85	—
5. East German Union	6928.03	1165.10	3064.75	324.67	668.89	928.30	41.27	96.44	13217.95	25.4 %	0.96	—
6. Hungarian	487.46	159.51	70.63	527.45	51.37	84.63	—	46.58	1427.63	48.4 %	—	—
7. Latin	1613.34	569.19	171.89	325.66	219.16	—	0.97	41.08	2946.29	21.1 %	11.76	—
8. Polish	529.05	104.10	141.60	21.26	7.10	12.67	—	6.88	822.66	34.2 %	—	—
9. Rumanian *	423.55	4.38	98.16	22.19	21.89	2.00	2.23	8.60	583.00	19.5 %	6.43	—
10. Scandinavian	4646.29	1831.24	136.37	333.33	214.35	21.10	1.23	362.99	7596.95	26.8 %	16.08	—
11. West German	5965.53	1001.54	2012.03	285.61	219.81	1121.32	—	62.53	10668.42	24.1 %	10.98	—
12. Jugoslavian Union-M.	107.47	30.93	47.56	—	45.69	—	—	—	231.65	13.1 %	—	—
13. Bulgarian Mission	82.51	35.12	10.73	38.78	10.65	4.82	—	7.26	189.87	46.3 %	—	—
14. Missions **	1633.11	159.76	72.19	1926.75	2356.86	395.42	970.82	32.96	7547.37	93.7 %	48.06	—
15. Russian Unions **	2309.85	253.48	—	—	—	3369.30	—	—	5932.63	29.2 %	—	—
\$	35130.26	8172.25	7997.29	4356.53	4143.61	7036.26	1022.39	1159.30	69017.39	27.9 %	105.12	96.

\* For two months only (January and February).

\*\* Report for the fourth quarter of 1925.



European Division of the General Conference of S. D. A.  
Report of the Publishing Houses for the Year 1925.

Name	Address	Book Sales	Periodical Sales	Total Value Literature Sold	Bldgs.	Empl.	Period. Publ.	Lan- guages
1. Hamburg Publishing House*	Hamburg, Germany.....	\$ 581384.40	211638.04	748022.44	9	152	11	3
2. Stanborough Press, Ltd.	Watford, Herts, England.....	83057.22	47780.00	130837.22	1	30	3	2
3. Norway Publ. House	Oslo, Akersgaten 74, Norway.....	30931.70	19222.87	50254.57	—	19	4	1
4. Sweden Publ. House	Stockh., Tunnelgatan 25, Sweden.....	36000.00	11000.00	47000.00	1	6	2	1
5. Denmark Publ. House	Copenh., Margrethevej 5, Denm.....	36233.73	9436.88	45670.56	—	4	2	1
6. France Publ. House	Dammarié-les-Lys, (S. & M.) Fr.....	24738.85	8409.33	33148.18	1	16	3	1
7. Finland Publ. House	Helsingfors, Annegatan 7, Finl.....	27512.00	2818.00	30330.00	—	5	3	2
8. Latvian Publ. House	Riga, Brivibas eela 11, Latvia.....	20785.62	2215.48	23001.10	—	5	2	5
9. Czechoslovak. Publ. House	Brno, Kralovo Pole, Czechosl.....	15928.48	2940.05	18868.53	1	4	2	7
10. Jugoslavia Publ. House	Novi Sad, Petra Zrinskog, Jugosl.....	15500.50	2573.80	18073.80	1	3	3	3
11. Spain Publ. House	Barcelona, Apartado 492, Spain.....	14879.79	1003.81	15888.10	—	2	2	1
12. Poland Publ. House	Bydgoszcz, Nakielska 103, Pol.....	7443.47	6845.56	14289.03	1	3	1	1
13. Rumania Publ. House	Bukarest, Str. Labirint 116, Rum.....	8129.00	2082.00	10211.00	1	3	2	3
14. Italy Publ. House	Florence, Casella Post. 408, Italy.....	6804.50	525.20	7329.70	1	2	1	1
15. Esthonia Publ. House	Reval, Merepustee 14-a, Esth.....	3453.14	847.40	4300.54	1	2	2	1
16. Portugal Publ. House	Lisbon, Rua Joaquin Bonifacio, P.....	2182.00	—	2182.00	—	—	1	1
17. Bulgaria Publ. House	Sofia, Ul. Solunska 47, Bulgaria.....	1275.90	544.56	1820.46	1	1	1	1
18. Egypt Depository	Cairo, 2 Sharia Ayad Bey, Shubra.....	552.90	—	552.90	—	—	—	—
19. Turkey Depository	Constantinople, Galata, P. B. 109.....	359.43	280.75	640.18	1	—	—	2
20. South Kavirondo Press	Gendia, P. O. Kisumu, Kenya, E. A.....	292.45	—	292.45	1	3	—	6
21. Iceland Depository**	Reykjavik, P. B. 262, Iceland.....	—	—	—	—	—	—	—
Grand Totals for the Year 1925		\$ 867445.08	330262.68	1197707.76	21	260	45	
Grand Totals for the Year 1924		\$ 776323.35	271975.65	1048299.00	17	245	44	
Grand Totals for the Year 1923		\$ 476947.04	178247.11	655194.15	21	231	42	
Grand Totals for the Year 1922		\$ 487078.33	93457.95	580586.28	20	250	39	

\* Includes Holland, Hungarian, Austrian and Swiss Branches.

\*\* No report received.

European Division of the General Conference of S. D. A.  
Educational Institutions (1925).

Name	Address	No. of Bldgs.	No. of Acres	Capacity	Grades			Teachers	Grades done	Library	Laboratory	Manual Tr. Fac.	Stud. grad.	Grad. 12 grad.	Grad. 14 grad.	Grad. 16 grad.	Stud. ent. Work.
					1-8	9-12	13-16										
1. Baltic Union School	Brivibas eela 11, Riga, Latvia	8	275	150	—	150	—	8	7-12	1000	Yes	Yes	—	—	—	—	75
2. Czechoslovak. Miss. School	Lodenice near Prague, Czechosl.	3	33	70	—	14	—	2	9-11	220	No	Yes	3	3	—	—	14
3. Finland Mission School	Hameenlinna as. Finland.....	1	1	25	—	24	—	4	9-11	175	—	—	11	11	—	—	7
4. Friedensau Miss. Seminary	Post Grabow, Bez. Magdeburg, Germany.....	14	200	258	21	207	30	11	9-14	3500	Yes	Yes	22	121	—	—	31
5. Latin Union Miss. Seminary	Collonges-sous-Saleve, France	7	30	115	—	86	22	9	9-14	1600	Yes	some	3	—	3	—	60
6. Marienhöhe Miss. Seminary	near Darmstadt, Germany.....	4	30	250	—	210	—	8	9-12	1500	Yes	Yes	13	13	—	—	11
7. Naerum Mission School	Naerum, Denmark.....	2	4	75	—	42	—	5	9-12	410	Yes	Yes	5	5	—	—	27
8. Naerndertal Miss. Seminary	Mettmann, Rheinland, Germany	2	32	150	—	136	—	9	9-12	900	No	Yes	18	18	—	—	18
9. Norway S. D. A. Miss. School	Onsrud, Algarheim Jessheim, Norway.....	6	225	50	—	43	—	5	9-12	300	Yes	No	4	4	—	—	15
10. Rumanian Mission School	Str. N. Saveanu 10, Focsani, Rum.	1	2	35	—	31	—	4	9-12	150	No	No	—	—	—	—	12
11. Stanborough College	Stanborough Park, Watford, Herts, England.....	2	112	218	84	100	52	18	9-14	2500	Yes	Yes	10	8	2	—	50
12. Swedish Mission School	Järnboas, Sweden.....	6	625	60	—	53	—	6	9-12	700	some	some	9	9	—	—	34
Grand Totals for 1925:		56	1569	1456	105	1096	104	89		12335			98	72	26	—	354
Grand Totals for 1924:		43	1622	1415	132	750	310	89		9940			94	56	8	26	267
Grand Totals for 1923:		41	1661	1230	236	525	306	81		8170			170	95	40	—	162
Grand Totals for 1922:		35	1314	1135	208	581	94	70		6900			134	94	33	7	103

**European Division of the General Conference of S. D. A.  
Report of the Sanitariums for the Year 1925.**

Name	Address	No. of Buildings	No. of Acres	Capacity	Persons treated	Value of Charity Work	Physicians	Nurses	Other Employees	Total Employees
1. Skodsborg Sanitarium	Skodsborg, Denmark .....	21	8 <sup>1</sup> / <sub>2</sub>	340	1638	\$ 12615.90	5	95	164	264
2. Sanitarium "Waldfriede"	Zehlendorf-West-Berlin, Germany.....	4	8	110	1196	\$ 5275.00	4	34	27	65
3. Stanborough Park Sanitarium	Watford, Herts, England .....	1	17	80	559	\$ 7954.00	2	22	32	56
4. Lake Geneva Sanitarium	Gland, Ct. Vaud, Switzerland .....	3	93	75	242	\$ 400.00	2	13	19	34
5. Aibling Sanitarium	Kurhaus Wittelsbach, Oberb., Germany	1	—	124	50	\$ 250.13	—	2	19	21
6. Oslo Health Home	74, Akersgaten, Oslo, Norway .....	1	—	15	900	\$ 566.60	—	18	14	32
7. Kenya Mission Hospital	Gendia, P. O. Kisumu, Kenya, East Africa	3	10	50	1710	\$ 48.00	1	2	1	4
Totals for 1925:		34	136 <sup>1</sup> / <sub>2</sub>	794	6290	\$ 27109.63	14	186	276	476
Totals for 1924:		38	151	691	5201	\$ 20497.03	13	201	274	488
Totals for 1923:		40	157	730	4762	\$ 17758.80	15	196	275	485
* Totals for 1922:		46	780 <sup>1</sup> / <sub>2</sub>	781	4513	\$ 18350.00	16	182	304	502

\* Includes Nyhyttan Health Home.

**Report of the Treatment Rooms for the Year 1925.**

Name	Address	Capacity	Persons treated	Charity Work	Physicians	Nurses	Other Empl.	Total Empl.
1. Bergen, Treatment Rooms	Kurbadet, V. Torvgate 11, Bergen, Norway	45	150	\$ 18.83	—	4	—	4
2. Nyhyttan Health Home	Järnboas, Sweden .....	85	200	\$ 200.00	1	8	22	31
3. Stockholm Treatment Rooms	Humlegardsgaten 18, Stockholm, Sweden	100	700	\$ 842.00	—	11	4	15
Totals for 1925:		230	1050	\$ 1060.83	1	23	26	50
Totals for 1924:		220	1050	\$ 1164.47	1	26	25	52
Totals for 1923:		215	1050	\$ 824.45	1	26	23	50
Totals for 1922:		130	900	\$ 550.00	—	15	3	18

Tigran Zakharian, an Armenian colporteur-evangelist to Salt, where he held meetings with the people. On my return from Mesopotamia early in 1914 I visited Salt together with Elder Henry Erzberger, following which the evangelist Ibrahim el-Khalil, a convert from Mohammedanism, was located there, but was compelled to leave after the outbreak of

war. Soon after the departure of Brother Khalil, Michael Haddad, a merchant, meditated upon the message heard, and on his own accord began to keep the Sabbath, closing his shop regularly as



Sabbath-keepers at Salt.



Church members at Mosul.

the only one in this city of some 20,000 inhabitants. Remembering something of tithe-paying he turned over certain, rather considerable, amounts, to the local Protestant church with the request that it be used by the British and Foreign Bible Society for the circulation of the Scriptures. Having been compelled to flee during the war when his shop was raided, he was happy on his return after some years to find the £ 220 in gold he had hid in the ground which served as a working capital to start business anew; when all other people were impoverished. So, when the writer with Elder Keough visited Salt in the winter of 1922, we found him prospering and faithful to the light received. He had a good reputation and was generally known by the population as "es-Sabti", i. e. the Sabbath-keeper.

It gives us great joy to learn that the labours of our brethren in the field have finally resulted in the baptism of these twelve dear souls in the river Zarqa which is really the Jabok of old, where the Patriarch Jakob had that wonderful experience with the Lord. It meant quite a struggle for these new converts to step out in the face of opposition, but the Lord has given them the victory.

W. K. Ising.



### Miscellaneous.

By the time this Quarterly is in the hands of its readers, the European delegation will be in attendance at the General Conference Session convening at Milwaukee, Wisconsin, May 27 — June 14. This will be an important gathering and we pray God to bless all the deliberations of His people as they meet here from all parts of the world field to study, and to lay plans for, the hastening of the message in all lands.

We are glad to learn of the progress made in building the Gendia Hospital as will be seen from the report of Dr. Madgwick. The funds, it will be remembered, were provided by the Jubilee-Offering of 1924. May this institution prove a great blessing in relieving the suffering of the people for whom it is intended and may many of them be led to the Great Physician of their soul.

We were pleased to meet at Berne Prof. Thomas W. Steen, Principal of the "Collegio Adventista", our training school at Sao Paulo, Brazil. From the school calendar we have in hand it is evident that they have a fine faculty and a very promising student-body numbering in 1924, 236, of whom 193 were internes. According to the catalogue they expected a considerable increase in 1925. Quite a large farm is connected with the school

and the proceeds from agriculture provide a large share of the financial up-keep and have also made Brother Steen's trip to Europe in the interest of their school work possible. Our hearts were cheered as Prof. Steen spoke to the Division family of some of the remarkable experiences they have had, especially during the time of the revolution. Of particular note is the fact that all their building has been done by their own students under the leadership of a builder. Brother Steen has made a round of our principal schools where, we are sure, his visit has been greatly enjoyed. Europe certainly takes a great interest in the work in South America as quite a few European workers have gone to that field.

Elder K. Kaltenhäuser, formerly of Germany, reports 150 attending their conference in Jaragua, Brazil, where our brethren have to cover long distances. He has recently baptized five persons as a result of his labours. Some pictures sent us show him building a little home for himself and a church at Brusque, St. Catharina.

Early in April we were favoured with the visit of Brother L. C. Shepard, Secretary of the Publishing and Home Missionary Departments of the Southern Asia Division who is returning home on furlough after seven years of service in India. During his stay in Berne he spoke to the young people of the church and also at the morning worship to the Division workers. We were glad to learn of the wonderful progress made in India in the circulation of literature. Our canvassing work has now been placed on an entirely self-supporting basis, while until recently canvassers were still receiving a small supplementary wage in addition to the commission on their sales. It took much courage to change this condition, but our colporteurs, now numbering 40 in India, are heart and soul in this work. Many promising openings and the sympathy shown even by Mohammedans bespeak good progress for the future.

In No. 13 of the Review and Herald C. C. Crisler, Secretary of the Far Eastern Division, speaks of the work of Elder Leon Z. Roda, one of their pioneer Filipino evangelists, who has been instrumental in raising up a number of churches in the Philippine islands, where the work has prospered so wonderfully in recent years. With our brethren in the Far East we mourn the loss of this faithful worker from tuberculosis. The many souls won for the Kingdom by this brother are the best monument of his labours.

Speaking further of the work in the Philippines Brother Crisler goes on to say:

"The increase of Sabbath-keeping believers in the Philippines during the fifteen years since the baptism of Elder Roda and the seven other "first fruits", has been nothing less than Pentecostal. Today, in the Tagalog language area, there are 2,500 baptized members of Seventh-day Adventist churches; in the Ilocano language area there are upward of 1,000, including the sixty-two won by Brother Roda during his last public effort; in the southern islands there are more than 2,000 in Panay and Negros, and 1,000 more in Cebu and adjacent territory. "What hath God wrought!" And what a monument to those who have been faithfully pioneering the way!"

---

No. 10 of the official organ of the German Evangelical-Lutheran Church brings the following statement:

"Lunartsharsky, minister of education for Soviet Russia, himself an atheist, admitted to a newspaper reporter that the church of Russia has come forth from these years of her most serious internal distress with an undeniable gain in religious sentiment and spirituality, and that by a deepening of their church services, religious musical programmes and the bringing of the faith in God to the individual has become a successful ideal competitor of purely political Bolshevism with its clubs, theatres and cinemas."



"Love wins, It finds ways and means of reaching the straying brother. Love is not condemnatory, but is constructively helpful. It points the way back to the fold, to a reunion with Christ and the brethren, in such a definite and kind way as to make possible the return of the discouraged, wandering brother."

