

# QUARTERLY REVIEW

of the  
European Division of the General  
Conference of Seventh-Day Adventists

Vol. 14

No. 1

Statistical Report of Conferences and Mission Fields  
for the  
First Quarter 1928

Issued by the European Division of Seventh-Day Adventists  
17 Höheweg, Berne, Switzerland



Partial view of our mission station in Liberia. To the right the bell donated by the M. V. societies and churches in Saxony.

## VISITING WEST AFRICA.

Early in January of this year the writer together with Brother W. E. Read took boat at Southampton to visit our missions in West Africa. Brother and Sister Tranborg from Denmark, both trained nurses from the Skodsborg sanitarium, were with us to connect with the work in Sierra Leone, also Sister Sara Henriksen, who was returning from her furlough to take up her school work again; further there was Brother K. Noltze from southern Germany, who went out as a new recruit to Liberia. Thus we were quite a little company bound for the regions beyond. A similar number of missionaries of the Basel mission were travelling on the same boat to the Gold Coast and the Cameroons.

After two weeks we reached Freetown, the capital of Sierra Leone, where we were glad to meet Brethren Gronert and Berglund. The latter was awaiting our arrival to return home with his family on their first furlough. Brother Gronert had been in the field only some seven months and, as the new superintendent, had taken hold of things in a good way bearing in mind the shortness of time and the multitude of questions confronting a new-comer in entirely new surroundings. During the days of our stay at Waterloo, the main station, which is about 22 miles distant from Freetown, we had meetings both for the European and African workers and special committee councils to plan for the work in this field. We have a growing interest up-country among the Temne and Mende tribes where our native evangelists are located in a number of out-stations conducting also school-work.

One of the most inspiring experiences I have ever had was the farewell meeting we had with the brethren when we celebrated the ordinances followed by a social meeting. It did our hearts good to listen to the simple, earnest testimonies given by them. We could enter most sympathet-

ically into the feelings of our dear missionary brethren as the parting words had to be spoken here as well as at the other fields visited.

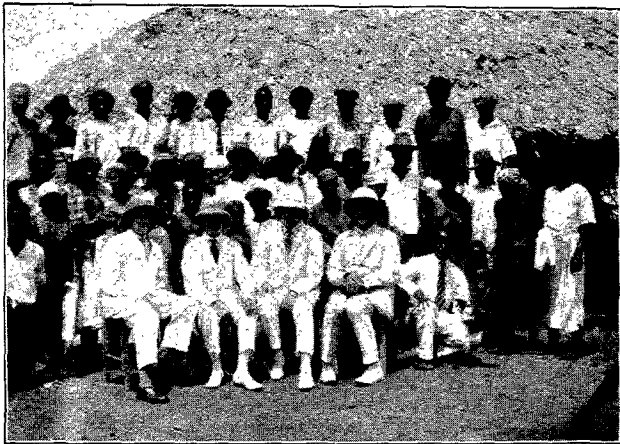
From Freetown we then proceeded on a Dutch cargo boat, as the only passengers, which took six days to Monrovia, the capital of Liberia, the Negro Republic founded in 1847 by the liberated slaves from America. Here we met Brethren Helbig and Noltze. The latter had been delayed by custom formalities, while Brother Helbig had made a very arduous and dangerous journey of several days from the mission station across country to meet us at Monrovia travelling one whole night and sitting almost motionless with nine natives in a canoe through the bush where the river was infested with crocodiles and hippopotami. After visits to the Secretary of State Dr. Barclay, and the Director of Education Dr. Payne, where we heard good reports of our work, we made preparations for our voyage to Grand Bassa. As steamer communication is not regular we decided rather reluctantly, in order to lose no time, to make the trip by surf-boat. With the native crew and several other African passengers we were some twenty persons in all — quite a company for such a small craft which was partly driven by a sort of patched-up "sail" when there was wind, and by oars during the calm. It was a bit adventurous but could not well be avoided. Happily we had not yet entered upon the rainy season with its terrific storms when such a trip would be considered hazardous amid the rocks all along the coast and the shallow bar. In twenty-six hours we reached Grand Bassa and were glad when the sturdy krumen carried us and our goods on their shoulders safely to the shore. Here we were welcomed by the agents of the Woerman Line, who with the Dutch agent and manager of the branch of the Bank of British West Africa had been very obliging to Brother Helbig during his financial crisis at the beginning

of his work early in 1927 when our remittances miscarried by advancing to him, though a stranger, a sum of up to \$ 1750 without which the work would have been crippled in this initial stage of building up the station before the rainy season. We certainly appreciate this noble help rendered.

Also at this place we visited officials such as the acting county superintendent and the mayor of the city both of which had words of praise for our mission, especially the latter who lay sick in his home, and had been successfully treated also previously by Brother Helbig, the "doctor", as he is generally known. He had recently visited his Excellency President King at Monrovia and done by our brethren there.

After a march of eight hours, a number of porters carrying our loads, we reached the mission station, which is about 40 kilometres northeast of the coast cut right out of the "bush" and located on a little plateau of a plot of ten acres granted us by friends. An hour's distance they hold one hundred acres as a mission farm given us by the government. Our brethren reached this place and began cutting the bush beginning of April and it is really astonishing what they have accomplished in such a short time. They have built eight little houses, the larger one of which with three rooms serving as their dwelling until the bungalow is finished for which the foundation was just being laid. Five of the houses, with two rooms each, serve as dormitories for twenty boys with whom school was to be started in April of this year. Another is used as dispensary and the adjoining one as store-room. Between these two rows of houses there is a large open "palaver house", a roof on poles, which is to be used also for class-rooms, further a carpenter shop, boys' kitchen etc. Brethren Helbig and Flammer, the only workers, have, in addition to their other work, treated 800 patients since August to the end of the year. This medical help has been the entering wedge and it was touching to see the love manifested by these raw heathen towards Brother Helbig who has given relief to so many, while himself suffering the heaviest loss in his companion, who never saw the station and died shortly after returning home in July last year. Brother Flammer was advised to return on his furlough a few months earlier to get some special medical treatment. His place will be filled meanwhile by Brother Noltze who came with us.

Much as we desired to remain longer we had to take our departure, again on a cargo steamer to Sekondee, on the Gold Coast. From here we went by rail and auto up to Agona, 200 miles inland, our main station. Brother Hyde, formerly



Group of European workers with native helpers and visitors at the mission station Liberia. Front row from left to right: E. Flammer, R. Helbig, K. Noltze, W. E. Read.

of Sierra Leone, is now the superintendent of this mission where work was first started on the West Coast as early as 1894. In fact, it appears that Brethren R. G. Rudolph and E. L. Sanford arrived at Appam February 22 of that year while the missionary party sent from South Africa to Bulawayo, Matabeleland, reached that place only in July. Brother Stokes had just come out to this field from England a few weeks ago to relieve Brother Munson who was preparing to return on furlough. In our meetings and councils we followed the same plan here as in Sierra Leone. We could also visit a number of out-stations where we had the opportunity of speaking to the people, mostly heathen. One greatly encouraging factor in this field is the ingenious plan introduced for the Harvest Ingathering in which they were collecting during 1927 some £ 300. This is remarkable and an evidence of what can be done in the mission fields by systematic effort. Our brethren look for even greater results in the future. The school work needs to be strengthened, and a church building should be erected in the nearby village of Agona where we have a hundred loyal brethren.

From Kumasi, which is about 25 miles from Agona, we took the train down to Accra on the coast whence we proceeded by steamer to Lagos in Nigeria, and from here by another cargo boat to Port Harcourt, the eastern coastal terminus of the railroad. Several hours' ride north brought us to Aba, the main station for the south-eastern section of our work, where Brethren Clifford and Edmunds with their wives are located, with the former in charge. Another station is soon to be erected for Brother Edmunds. Here we had a short institute, visiting also a few stations up country. We then, with the European workers, set out in a motor truck across country from Aba to Ibadan,

the headquarters of our work in Nigeria, which we reached in three days. This place has been chosen but recently as the center of our work. The bungalow which happily is a more substantial structure as it is well to have in countries with such trying climate, was just completed while the school-building was under roof. Ibadan with, it is said, almost 500,000 inhabitants is the second largest city in Africa, Cairo ranking first, while the former is probably the largest so far as the native population is concerned. We have as yet no church at this metropolis but work is begun by a promising young evangelist. Brother and Sister Till are located also at this place with Brother McClements who is in charge of our mission in Nigeria. Brother and Sister McClements have had their share of hard experience during their eight years of service in this field, the longest of any white workers on the West Coast. Next to them are Brother and Sister Clifford. They need a better bungalow to live in. This is only economy in fields where our workers are exposed to such severe strain, in order to preserve their health and insure a continuity of service that is the paramount prerequisite for building up a strong work. After studying the problems here in committee and laying plans for the future, several of us proceeded on a day's journey by train and auto to Awtun further north, the third European station, where Brother W. Hyde is located. Here we held an institute with the African workers. On Sabbath I had the privilege of speaking twice in our nearby church to our brethren and a large number of visitors. We then returned to Ibadan and from there passed on by train to Lagos. The following day we had a meeting with our brethren in the rather out-of-the-way home of Brother Hamilton, one of our early native workers on the West Coast. He had recently been given a furlough to his homefield Sierra Leone where he unfortunately lost his wife shortly before returning to Lagos. This is a large and important city where a strong work should be established. The brethren in Nigeria voted to invite well educated and experienced coloured evangelists from America to take up work in this city. After visiting a number of government officials we boarded a British steamer homeward bound, reaching Plymouth April 7.

In looking up old records of the visit of Elder Conradi, who was really the first member of the General Conference Committee to visit the West Coast in the fall of 1913 it is interesting to note the fruitage that has grown out of the plans laid there. It was then decided to take up work in the hinterland of Sierra Leone among the Temne and Mende tribes where two white workers were to be located with native evangelists. But only the latter could be sent. A white worker was to go to the Gold Coast in an effort to hold what was still left. Another great step of faith was taken in

sending Elder Babcock to Nigeria to start new work. To-day our work is numerically strongest in Nigeria, where we have over a thousand Sabbath keepers with a growing interest though it was begun latest. Some Baptist brethren in Liberia requested that we send a worker to them with a view to entering new territory. It has taken fourteen years for this plan to mature in the sending of our first brethren to Liberia early in 1927. The result obtained in Nigeria is an illustration of what might have been accomplished had we been able to comply with this request from Liberia at that time. There are many unentered regions in West Africa waiting for the Advent Message where as yet there is not a single representative. Our work at present touches but a fringe along the coast of a few colonies. What about the other vast stretches of country on the West Coast? What we now have needs strengthening and consolidating to serve in time as a "home base" for the work to be done in the hinterland and in new territory.

Two resolutions passed at the time of Elder Conradi's visit in 1913 are still the clarion call in our days when fifteen long years have elapsed: "To give our chief attention to the preaching of the everlasting Gospel"; and, "to extend our work as fast as possible into the unoccupied hinterland", for, as the record reads: "Everywhere we behold souls bound down in heathen darkness and unoccupied territory is inviting us to enter."

W. K. Ising.

## THE HUNGARIAN UNION CONFERENCE.

The first quadrennial session of the Hungarian Union convened at Budapest March 14-18. In connection with this meeting the Central Hungarian local conference had its annual meeting, and right before came the conference in East Hungary, and right after the one in West Hungary. All the workers of the Hungarian field were in attendance at the Union workers' meeting. From outside the Union Bro. Jos. Braun of Vienna and the writer were present. The Lord greatly blessed in these gatherings. Bro. A. Minck, who has served this field faithfully in the hard and difficult war times and after, was unanimously re-elected president of the Union. God has greatly blessed him in his labours and he has the fullest confidence of his fellow-workers.

The cause of God is onward in Hungary. In 1919 we had 482 members. Today the membership of the Union is 1556 with 62 churches and companies. During the last three years, since the Union was organised, there has been a net increase in membership of 493. In finances, too, there is real growth. The tithe in 1925 was 62,008.—Pengö.

In 1927 it was 84,245 Pengö. The mission offerings for 1925 were 38,362 Pengö, and in 1927 49,802 Pengö. (5.76 Pengö make one dollar). In the colporteur work also there is a good increase. Bro. Wicklein, the colporteur leader, has gathered a strong force of over sixty workers and the sales show a steady increase. Brother Sohlmann heads up the other departmental work and has had excellent success. The reports show growth in practically every line. We attended a Young People's program in Budapest evening after the Sabbath on foreign missions. It was one of the best we ever heard. Bro. Stein, the manager of the Hungarian Branch of the Hamburg House, gave a very instructive report of what that good institution is doing. One thing that helps us much in Hungary is the health paper and other temperance literature.

One of the many encouraging signs in Hungary is the group of substantial young ministers, leaders and other workers who have been brought into the truth and work. Both ministers and members enter upon this new quadrennial session with the highest courage. The meetings were deeply spiritual and very helpful in every way.

L. H. Christian.

## THE MISSIONARY'S OPPORTUNITIES AND QUALITIES.

In his voluminous book "The Republic of Liberia", Sir R. C. F. Maugham, for many years British Consul General at Monrovia, Liberia, now serving in the same capacity at Dakar, French Senegal, makes an interesting statement in the chapter entitled "Missions and Religious Institutions" on the opportunities afforded missionaries entering Liberia. Only a comparatively narrow strip of the coastline has thus far been explored and brought under the influence of orderly government, while the major part of the hinterland is still practically unexplored *terra incognita*.

It is well to note also what a high government official with long experience abroad in mission lands has to say on the type and quality of the missionaries sent out to such countries as Liberia, upon whom they look as a pioneering factor of the first order. Here is the statement:

"All these missions have made sufficient progress to enable one to say with confidence that they are necessary, that they are doing good, and that they are deserving of every encouragement. But, if I might be allowed to speak with great frankness, I would observe that, in my opinion, it would be productive of still greater and more far-reaching good if these admirable institutions were to devote a little less attention to the coast lands, where every native, in greater or lesser degree, is already acquainted with religious doctrine, and can now

receive all necessary instruction, and enlarge their borders towards the hitherto unvisited up-country regions. To minister to the moral and intellectual needs of those savage tribes who are still plunged deep in the darkness of the most abandoned superstition, and for whom the teachings of missionaries, and what they stand for, are unheard-of mysteries towards which their minds, such as they are, have never for one moment strayed, seems to me to be the object to which missionary effort should without delay direct itself. On the whole, I consider that the coast has had already its full share of attention for the present. Between it and the country of the really wild tribes there is quite a sharp dividing line. You might take a map and paint one black, and the other — well, almost grey, this serving to indicate that in the forest country the light of instruction had never penetrated, and that its illuminating force had been stayed in the past by — shall we say, the density of the interwoven jungle? But it is quite time that the other side of the dividing line was approached, when, properly undertaken, I shall look for great and important results. From such a campaign as this, every sort of advantage may be expected. . . . The presence of missions in the country would, after a while, lead to the opening and extension of inland roads, and, more important still, an increased measure of safety for the foot-passengers travelling over them. Little by little administrative officials would find means safely to establish themselves, and, by tactful handling, bring the up-country tribes to understand the important share which they should bear in the opening up and good government of the country. . . ."

Referring to the great work done by David Livingstone and Ludwig Krapf for the African continent, he says further:

"They belonged to a restricted class of men from which, in the past, other great missionaries have been drawn. All have not had the same great opportunities, of course, but what I feel is that, here in Liberia, which would seem in so far as its unknown resources are concerned to realize our conception of darkest Africa, is afforded, on a somewhat reduced scale perhaps, such an opening as Livingstone (speaking of him and Krapf before as missionaries and explorers. Ed.) saw when he devoted to research work the remainder of his career after his first memorable journey across Africa. It is, indeed, a great opportunity, and one for which missionaries in other lands have sighed in vain, for this is no ordinary missioning. *The men who are sent over the border-line to hold the gate in a land which has too long known but darkness, must be of the best that can be found, or they would be worse than useless. For the great role which they will have to play only men of the*

(Continued on page 8.)

## Statistical Report of the European Division of the General

Name of Conference or Mission	No. of Churches	Previous Membership	By baptism	By vote	By letter	Total gains	By apostasy	By death	By letter	Total losses	Net gain	Present Membership	Ordained Ministers	Licensed Ministers	Lic. Missionaries	Other Workers	Colporteurs	Total Workers	
1	2	3	4	5	6	7	8	9	10	11	12	13	14	15	16	17	18	19	
<b>European Division.....</b>	..	....	..	..	..	....	..	..	..	....	..	....	12	..	..	17	..	29	
<b>GERMAN-INTER-UNION ASSOCIATION (3)</b>																			
<b>1) East German Union.....</b>	..	....	..	..	..	....	..	..	..	....	..	....	4	..	..	4	..	8	
Berlin Conference.....	28	2357	19	5	247	271	13	5	216	234	37	2394	9	2	9	2	23	45	
Brandenburg Conference....	56	2125	30	6	53	89	25	9	51	85	4	2129	10	1	6	2	28	47	
Lower Silesian Conference..	41	1200	27	4	37	68	15	2	35	52	16	1216	5	3	2	15	27		
Northeast Saxonian Confer.	42	2112	39	—	34	73	24	10	39	73	—	2112	10	4	9	30	55		
Upper Silesian Conference...	32	1270	31	5	21	57	27	3	15	45	12	1282	6	4	2	22	36		
East Prussian Conference...	64	2037	22	11	30	63	28	7	36	71	—8	2029	9	3	4	2	44		
Pomeranian Conference.....	46	1407	13	7	15	35	6	6	28	40	—5	1402	8	2	4	1	30		
West Saxonian Conference..	67	2352	42	5	46	93	20	7	44	71	22	2374	10	3	7	2	44		
<b>Total</b>	<b>376</b>	<b>14860</b>	<b>223</b>	<b>43</b>	<b>483</b>	<b>749</b>	<b>158</b>	<b>49</b>	<b>464</b>	<b>671</b>	<b>78</b>	<b>14938</b>	<b>71</b>	<b>22</b>	<b>43</b>	<b>19</b>	<b>181</b>	<b>336</b>	
<b>2) West German Union.....</b>	..	....	..	..	..	....	..	..	..	....	..	....	2	..	..	6	..	8	
Hanover Conference.....	57	2175	45	3	11	59	28	5	18	51	8	2183	8	4	7	1	26	46	
Hansa Conference.....	52	2259	67	8	24	99	55	6	15	76	23	2282	8	2	13	1	27	51	
Hess. Westphal. Conference	56	1746	32	5	12	59	14	4	13	41	18	1764	7	1	9	1	29	47	
Rhenish Conference.....	57	2788	37	5	23	65	53	6	44	103	—38	2750	8	1	12	1	40	62	
Thuringian Conference.....	62	2216	38	5	16	59	29	4	24	57	2	2218	9	2	9	1	29	50	
Holland Conference.....	26	822	30	4	5	39	2	4	7	13	26	848	4	3	5	—	17	29	
<b>Total</b>	<b>310</b>	<b>12006</b>	<b>249</b>	<b>30</b>	<b>91</b>	<b>370</b>	<b>181</b>	<b>29</b>	<b>121</b>	<b>331</b>	<b>39</b>	<b>12045</b>	<b>46</b>	<b>13</b>	<b>55</b>	<b>11</b>	<b>168</b>	<b>293</b>	
<b>3) Central European Union...</b>	..	....	..	..	..	....	..	..	..	....	..	....	2	..	..	4	..	6	
German Swiss Conference...	28	1124	9	16	6	31	21	4	14	39	—8	1116	4	6	3	2	20	35	
Wurtemberg Conference....	45	1557	24	9	20	53	24	9	42	11	1568	7	1	8	2	2	26	44	
Baden Conference.....	19	940	14	2	9	25	7	5	18	30	—5	935	4	4	5	2	16	31	
North Bavarian Conference	22	1223	15	—	7	22	6	5	3	14	8	1231	6	1	4	2	19	32	
South Bavarian Conference	34	1853	45	4	5	54	21	8	17	46	—8	1861	7	5	5	3	19	39	
Main Neckar Conference....	22	1448	13	4	10	27	13	5	9	27	—	1448	4	1	9	2	25	41	
Austrian Conference.....	22	965	57	2	3	62	13	1	2	16	46	1011	7	2	6	2	20	37	
School Church.....	1	180	—	—	15	15	5	—	6	11	4	184	2	1	—	13	5	21	
<b>Total</b>	<b>193</b>	<b>9290</b>	<b>177</b>	<b>37</b>	<b>75</b>	<b>289</b>	<b>110</b>	<b>37</b>	<b>78</b>	<b>225</b>	<b>64</b>	<b>9354</b>	<b>43</b>	<b>21</b>	<b>40</b>	<b>32</b>	<b>150</b>	<b>286</b>	
<b>Baltic Union.....</b>	..	....	..	..	..	....	..	..	..	....	..	....	4	1	..	1	..	6	
Latvian Conference.....	40	2102	2	2	3	7	16	6	5	27	—20	2082	6	4	6	1	17	34	
Esthonian Conference.....	18	1379	—	12	—	12	10	7	—	17	—5	1374	5	4	1	1	12	23	
Lithuanian Mission.....	9	159	—	—	—	—	—	—	1	1	—1	158	2	3	1	—	2	8	
<b>Total</b>	<b>67</b>	<b>3640</b>	<b>2</b>	<b>14</b>	<b>3</b>	<b>19</b>	<b>26</b>	<b>13</b>	<b>6</b>	<b>45</b>	<b>—26</b>	<b>3614</b>	<b>17</b>	<b>12</b>	<b>8</b>	<b>3</b>	<b>31</b>	<b>71</b>	
<b>British Union Conference....</b>	..	....	..	..	..	....	..	..	..	....	..	....	5	2	..	2	..	9	
South British Conference...	36	2734	9	6	14	29	23	10	11	44	—15	2719	16	2	23	5	45	91	
North British Conference...	29	1812	24	11	7	42	5	11	6	22	20	1832	11	6	12	4	50	83	
<b>Total</b>	<b>65</b>	<b>4546</b>	<b>33</b>	<b>17</b>	<b>21</b>	<b>71</b>	<b>28</b>	<b>21</b>	<b>17</b>	<b>66</b>	<b>5</b>	<b>4551</b>	<b>32</b>	<b>10</b>	<b>35</b>	<b>11</b>	<b>95</b>	<b>183</b>	
<b>Czechoslovakian Union.....</b>	..	....	..	..	..	....	..	..	..	....	..	....	1	1	..	4	..	6	
Moravia Silesian Conference	30	880	24	7	7	38	6	3	4	13	25	905	3	2	1	2	15	23	
North Bohemian Conference	29	614	23	—	1	24	9	1	2	12	12	626	6	—	2	1	13	22	
Central Bohemian Mission..	13	302	12	2	4	18	1	—	5	6	12	314	1	—	1	3	16	21	
Slovakian Mission.....	16	381	5	—	—	5	1	—	3	4	1	382	2	1	2	3	13	21	
<b>Total</b>	<b>88</b>	<b>2177</b>	<b>64</b>	<b>9</b>	<b>12</b>	<b>85</b>	<b>17</b>	<b>4</b>	<b>14</b>	<b>35</b>	<b>50</b>	<b>2227</b>	<b>13</b>	<b>4</b>	<b>6</b>	<b>13</b>	<b>57</b>	<b>93</b>	
<b>Hungarian Union.....</b>	..	....	..	..	..	....	..	..	..	....	..	....	2	1	..	4	..	7	
East Hungarian Conference..	27	718	23	7	2	32	15	3	14	32	—	718	3	4	3	1	24	35	
Central Hungarian Confer.	20	672	34	3	13	50	12	2	3	17	33	705	2	2	6	—	29	39	
West Hungarian Mission....	14	166	—	—	—	2	—	—	—	—	2	168	1	1	2	—	12	16	
<b>Total</b>	<b>61</b>	<b>1556</b>	<b>57</b>	<b>10</b>	<b>17</b>	<b>84</b>	<b>27</b>	<b>5</b>	<b>17</b>	<b>49</b>	<b>35</b>	<b>1591</b>	<b>8</b>	<b>8</b>	<b>11</b>	<b>5</b>	<b>65</b>	<b>97</b>	

Conference of S. D. A. for the Quarter Ending March 31, 1928.

	Tithe	Tithe per Capita	Offerings to Mission (except Sabbath Sch. Off.)	Sabbath School Offerings (12 Sabbaths)	13th Sabbath School Offerings	Mission Offerings per Capita and per Week	Special Offerings (Big Week)	Contributions for Local Church Work	Books and Periodical Sales	No. of Sabbath Schools	Membership	Average Attendance
	20	21	22	23	24	25	26	27	28	29	30	31
<i>RM</i>	52781.43	22.39	2438.33	4221.73	974.53	0.25	8.00	10844.98	13802.00	28	2546	1758
<i>RM</i>	34662.31	16.31	2207.12	3786.43	1015.06	0.25	—	4854.52	19094.00	56	2165	1626
<i>RM</i>	17089.55	14.24	734.83	2371.96	547.12	0.24	181.76	3098.05	8042.00	41	1439	1101
<i>RM</i>	45003.37	21.31	2482.47	5591.85	1469.01	0.35	—	6722.30	15470.00	42	2366	1717
<i>RM</i>	18903.79	14.88	789.66	2249.05	527.47	0.24	339.81	3728.56	9564.00	32	1394	1046
<i>RM</i>	19545.49	9.60	838.10	2651.02	685.06	0.16	63.50	3110.89	12001.00	64	2198	1460
<i>RM</i>	18638.39	13.25	781.21	1818.89	495.36	0.17	0.50	3173.66	8108.00	46	1466	1078
<i>RM</i>	49436.50	21.02	2246.13	5827.37	1356.74	0.31	—	7351.50	11800.00	67	2910	2048
<i>RM</i>	256060.83	17.23	12517.85	28518.30	7070.35	0.25	593.57	42884.46	97881.00	376	16484	11834
\$	61294.40	4.12	2996.34	6826.11	1692.09	0.06	142.07	10210.58	23304.99	—	—	—
<i>RM</i>	35576.77	16.36	1007.90	4501.15	832.45	0.23	94.70	4852.62	20701.00	57	2544	1743
<i>RM</i>	45701.17	20.23	2129.47	4877.35	1328.02	0.28	18.33	6112.22	18311.00	52	2659	1999
<i>RM</i>	27464.15	15.73	1456.96	3675.41	807.01	0.27	119.40	4462.50	20833.00	56	1605	1152
<i>RM</i>	47972.26	17.21	1868.69	5302.87	936.98	0.23	236.77	7804.91	27828.00	57	3054	2181
<i>RM</i>	39555.44	17.85	1976.78	4820.05	1232.41	0.28	180.75	6615.17	20426.00	62	2760	2015
hfl.	9102.30	11.07	950.65	927.58	200.90	0.19	—	803.47	6432.00	26	804	630
<i>RM</i>	211561.62	17.62	10036.90	24735.16	5474.38	0.29	649.95	31197.25	119191.93	310	13424	9720
\$	50642.60	4.22	2402.49	5920.90	1310.13	0.06	155.55	7427.91	28379.03	—	—	—
SFr.	31636.07	28.14	1328.40	4266.82	1256.60	0.47	85.25	4138.50	30308.00	29	976	656
<i>RM</i>	28183.24	18.10	1491.19	3643.10	801.48	0.30	235.60	3569.80	18302.00	45	1733	1351
<i>RM</i>	17449.34	18.56	913.18	2514.30	483.73	0.32	—	4479.40	9774.00	21	1036	716
<i>RM</i>	20292.45	16.59	566.91	2438.42	421.51	0.21	—	5300.26	13180.00	23	1322	916
<i>RM</i>	31913.58	17.22	1191.91	4314.28	1453.85	0.29	—	6331.99	15205.00	34	2066	1478
<i>RM</i>	22737.21	15.70	820.82	2763.48	340.92	0.22	188.80	4159.70	16287.00	22	1546	913
Sh.	24962.21	25.86	1148.46	2465.16	433.35	0.33	77.40	—	16275.00	23	976	675
<i>RM</i>	3082.93	17.13	39.18	238.06	57.78	0.14	—	122.95	4669.00	1	167	132
<i>RM</i>	164011.67	17.65	6776.79	20822.22	4832.80	0.27	539.12	27316.28	111568.73	198	9822	6837
\$	39260.20	4.23	1622.17	4984.29	1156.59	0.06	129.02	6503.88	26592.05	—	—	—
Ls.	20641.16	9.82	746.08	1938.09	597.20	0.12	—	5928.53	11961.00	77	2193	1522
EKr.	6975.35	5.06	420.26	1222.38	430.79	0.11	—	1186.46	3328.87	27	1459	1253
Lt.	3255.05	20.66	124.80	505.42	56.05	0.33	—	261.00	1529.00	9	163	135
Ls.	31942.66	8.77	1389.68	3882.73	1220.27	0.14	—	6798.95	17351.29	113	3815	2910
\$	6165.00	1.69	268.20	749.37	235.48	0.03	—	1486.28	3349.67	—	—	—
£	3580.9.1	1.6.2	119.15.10	534.14.6	206.10.0	0.0.6	3.8.10	226.0.4	2307.9.3	61	2863	2130
£	2139.14.1	1.3.7	71.5.4	326.16.2	106.16.7	0.0.5	0.2.6	217.1.7	2199.7.11	58	1841	1374
£	5720.3.2	1.5.2	191.1.2	861.10.8	313.6.7	0.0.6	3.11.4	443.1.11	4506.17.2	119	4704	3504
\$	27931.70	6.14	932.92	4206.79	1529.95	0.11	17.43	2162.30	21948.40	—	—	—
Kč.	69726.60	79.23	4313.35	9521.70	3454.30	1.51	—	3236.00	45716.10	30	1012	759
Kč.	85515.62	139.28	3354.41	8392.27	3022.65	1.89	350.00	9958.37	46686.00	29	656	513
Kč.	24182.35	80.07	1694.85	3840.70	708.70	1.59	—	1481.84	46917.00	13	302	245
Kč.	19237.10	50.49	869.45	2591.06	618.35	0.84	76.70	1975.00	41826.70	15	342	323
Kč.	198661.67	91.25	10232.06	24345.73	7804.00	1.51	426.70	16651.21	181145.80	87	2312	1840
\$	5895.90	2.71	303.68	722.24	231.25	0.04	10.39	497.05	5407.36	—	—	—
Pengö	6536.14	9.10	668.20	1135.02	279.03	0.25	282.70	1981.45	11816.20	28	756	551
Pengö	11865.22	17.65	1348.37	1696.29	473.56	0.47	588.63	2237.01	14343.50	20	628	516
Pengö	2088.54	12.58	152.24	423.17	117.36	0.36	89.30	493.80	6739.20	14	183	150
Pengö	20489.90	13.17	2168.81	3254.48	869.95	0.36	960.63	4712.26	32898.90	62	1567	1217
\$	3571.80	2.29	377.69	567.44	151.95	0.06	167.79	825.27	5751.57	—	—	—

## Statistical Report of the European Division Unions and Missions of the

Name of Conference or Mission	No. of Churches	Previous Membership	By baptism	By vote	By letter	Total gains	By apostasy	By death	By letter	Total losses	Net gain	Present Membership	Ordained Ministers	Licensed Ministers	Lic. Missionaries	Other Workers	Colporteurs	Total Workers
1	2	3	4	5	6	7	8	9	10	11	12	13	14	15	16	17	18	19
1 Latin Union.....	..	..	..	..	..	..	..	..	..	..	..	..	10	1	2	..	..	13
2 Leman Conference.....	21	939	..	4	23	27	5	9	7	21	6	945	2	4	13	1	14	34
3 South France Conference.....	19	470	1	1	6	8	..	..	..	..	8	478	6	1	..	..	6	19
4 Belgian Conference.....	10	405	11	3	..	14	2	..	..	2	12	417	5	4	3	..	6	18
5 East France Conference.....	11	326	11	..	3	14	5	..	..	5	9	335	3	2	5	..	8	18
6 North France Conference.....	8	332	1	..	2	3	8	1	19	28	25	307	4	3	7	..	4	18
7 Italian Mission.....	12	388	13	4	2	19	12	1	3	16	3	391	5	2	12	1	8	28
8 Algerian Mission.....	5	123	..	..	..	..	..	..	..	..	..	123	2	..	5	..	2	9
Total	86	2983	37	12	36	85	32	11	29	72	13	2996	37	17	53	2	48	157
9 Polish Union.....	..	..	..	..	..	..	..	..	..	..	..	..	1	..	5	..	..	2
10 Posanian Conference.....	15	341	2	..	6	8	2	5	12	19	11	330	3	..	1	1	8	17
11 Silesian Conference.....	18	692	6	7	6	19	6	..	7	13	6	698	1	2	8	3	14	28
12 Central Polish Conference.....	17	305	2	1	3	6	2	1	4	7	1	304	2	..	6	..	18	26
13 East Polish Conference.....	36	695	..	1	5	6	2	2	10	14	3	687	5	2	4	1	13	25
Total	86	2033	10	9	20	39	12	8	33	53	14	2019	12	4	24	5	53	98
Rumanian Union.....	..	..	..	..	..	..	..	..	..	..	..	..	3	2	3	4	..	12
Muntenian Conference.....	81	2996	11	15	103	129	20	9	101	130	1	2995	9	4	18	2	21	54
Moldavian Conference.....	53	1867	..	18	100	118	19	5	101	125	7	1860	4	3	11	2	11	31
Transylvanian Conference.....	88	2110	5	6	34	45	19	6	31	56	11	2099	5	2	9	2	10	28
Banat Crisana Conference.....	36	971	13	10	24	47	13	5	25	43	4	975	4	1	7	1	11	24
Total	258	7944	29	49	261	339	71	25	258	354	15	7929	25	12	48	11	53	149
Scandinavian Union.....	..	..	..	..	..	..	..	..	..	..	..	..	4	..	..	2	..	6
Danish Conference.....	44	2622	20	2	1	23	12	9	24	45	22	2600	9	4	8	2	18	41
Norwegian Conference.....	50	2295	4	2	5	11	15	10	11	36	25	2270	10	2	8	1	22	43
Swedish Conference.....	45	1835	1	2	1	4	21	6	10	37	33	1802	6	2	7	1	17	33
Finnish Conference.....	25	1431	2	6	1	9	36	4	1	41	32	1399	4	2	6	2	43	57
Total	164	8183	27	12	8	47	84	29	46	159	112	8071	33	10	29	8	100	180
Iberian Union Mission.....	..	..	..	..	..	..	..	..	..	..	..	..	1	1	..	..	..	2
West Spanish Mission.....	4	80	..	..	1	1	..	..	..	..	1	81	1	2	2	..	4	9
East Spanish Mission.....	5	186	..	..	2	2	..	..	2	2	..	186	3	1	4	..	4	12
Portuguese Mission.....	4	190	..	..	..	..	..	..	..	..	..	190	2	3	2	..	6	13
Total	13	456	..	..	3	3	..	..	2	2	1	457	7	7	8	..	14	36
Jugoslavian Union Mission.....	..	..	..	..	..	..	..	..	..	..	..	..	2	..	3	..	..	..
Adriatic Mission.....	28	408	19	..	1	20	1	7	..	8	12	420	2	..	3	..	19	24
Vojvodina Mission.....	33	530	10	..	..	10	..	1	..	1	9	539	2	..	3	..	30	35
Sava Mission.....	10	182	16	..	..	16	..	1	2	3	13	195	1	1	..	..	15	17
Total	71	1120	45	..	1	46	1	9	2	12	34	1154	5	1	6	..	64	76
Bulgarian Mission.....	15	258	5	3	6	14	3	1	6	10	4	262	2	5	2	1	10	20
Greecian Mission *.....	2	80	5	1	..	6	..	..	3	3	3	83	2	..	2	..	1	5

\* Report for the fourth quarter 1927.

(Continued from page 5.)  
*loftiest aims, the most uncompromising principles, and the highest possible conception of conduct and morality should be chosen.* It is not so much what at first they will actually teach which will constitute the thin end of the wedge of mutual confidence; it is rather the immense and increasing

value of the example set by their upright and blameless lives to a wondering barbaric world which will not, I venture to say, be so very slow, according to its lights, in making some attempt, however uncouth, to go and do likewise. Such men are to be found. They are, of course, the born missionaries — something of a priest, something



General Conference of S. D. A. for the Quarter Ending March 31, 1928.

	Tithe	Tithe per Capita	Offerings to Mission (except Sabbath Sch. Off.)	Sabbath School Offerings (12 Sabbaths)	13th Sabbath School Offerings	Mission Offerings per Capita and per Week	Special Offerings	Contributions for Local Church Work	Books and Periodical Sales	No. of Sabbath Schools	Membership	Average Attendance
	20.	21	22	23	24	25	26	27	28	29	30	31
SFr.	39007.08	41.54	1473.05	4109.62	1478.79	0.58	12.70	1644.10	20446.18	25	695	554
FFr.	40854.30	86.92	1620.60	7294.65	2722.45	1.92	78.50	—	26105.50	27	429	393
BFr.	73519.20	181.53	1954.73	6126.42	2636.35	1.73	—	—	26100.90	12	409	373
FFr.	37819.15	116.01	780.81	4042.75	2969.15	2.08	1010.55	—	28006.10	12	305	250
FFr.	48462.35	145.97	709.10	4100.80	1816.75	1.56	117.50	—	24611.00	8	280	216
Lire	18004.50	46.40	899.70	2939.95	895.05	0.94	—	2112.40	21363.50	25	376	358
FFr.	10153.85	82.55	—	1225.70	669.50	1.48	467.80	16.00	18489.00	10	133	115
SFr.	82511.60	27.66	2408.82	9218.09	3778.88	0.41	353.24	2238.83	50033.30	119	2627	2259
\$	15924.70	5.34	464.85	1779.10	729.32	0.08	68.17	432.20	9676.21	—	—	—
Zl.	8149.02	23.86	338.51	1382.30	279.65	0.47	80.53	—	3916.18	25	351	315
Zl.	11538.32	16.67	370.24	2155.34	427.88	0.33	—	—	5847.05	46	826	654
Zl.	6412.59	21.02	251.39	1258.84	309.38	0.54	342.00	—	4547.25	25	349	254
Zl.	5538.86	7.92	203.83	1037.19	210.51	0.16	—	—	4561.75	46	808	563
Zl.	31638.79	15.56	1163.97	5833.67	1227.42	0.33	422.53	—	18872.23	142	2334	1786
\$	3541.70	1.74	130.30	633.02	137.40	0.04	47.30	—	2113.35	—	—	—
Lei	782211.00	261.01	74848.75	160327.75	44022.75	7.22	2130.00	—	447363.00	81	4340	3060
Lei	336129.95	180.03	16200.60	56713.75	18572.50	3.90	3126.00	—	181730.00	49	2310	1901
Lei	438368.00	207.75	25705.50	42609.75	12227.75	2.95	508.00	6754.00	137848.00	135	2312	1983
Lei	176786.50	182.06	12419.25	24644.50	9738.00	3.71	100.00	3574.25	116086.00	33	1040	850
Lei	1733495.45	318.21	129174.10	284295.75	84561.00	4.88	5864.00	10328.25	883027.00	298	10002	7794
\$	10706.10	1.35	797.76	1735.81	522.25	0.03	36.22	63.75	5454.84	—	—	—
D. Kr.	44533.82	16.99	1340.86	6213.08	3150.17	0.40	3096.93	1359.73	30703.00	70	2448	1788
N. Kr.	33038.80	14.40	552.68	5774.34	1641.25	0.34	2170.76	4670.51	43348.55	50	2058	1400
S. Kr.	27096.14	14.77	402.46	4004.24	1674.63	0.36	2401.03	3797.51	25599.21	52	1596	1324
FMk.	135565.75	94.74	1124.00	19438.00	8951.50	2.71	20851.50	14598.50	319089.00	51	1206	1062
S. Kr.	116738.50	14.26	2387.75	17708.75	7267.58	0.35	9576.81	11393.70	130176.96	223	7308	5574
\$	31317.40	3.83	640.60	4750.74	1949.67	0.09	2569.18	3071.08	35088.13	—	—	—
Pes.	2533.40	31.67	881.75	453.60	184.85	1.46	—	44.10	4037.25	5	57	58
Pes.	4465.90	24.01	107.20	998.50	444.85	0.64	—	223.30	3790.60	9	185	178
Esc.	12663.00	66.65	—	2098.92	442.90	1.03	—	—	Pes. 6644.82	4	176	156
Pes.	10617.20	23.28	988.95	2051.79	755.92	0.64	—	267.40	14472.67	18	418	392
\$	1791.60	3.93	167.48	346.16	126.93	0.11	—	45.70	2404.10	—	—	—
Din.	44398.45	108.81	5428.25	3965.00	913.70	1.98	184.00	—	100513.00	34	553	475
Din.	45885.70	86.57	5821.25	5645.85	1507.00	2.10	1534.50	4392.45	87516.06	46	784	591
Din.	30479.65	167.47	3583.86	3019.05	594.95	3.04	—	—	67161.00	16	271	226
Din.	120763.80	107.82	14833.36	12629.90	3035.65	2.21	1718.50	4392.45	255190.00	96	1608	1292
\$	2121.00	1.89	260.53	221.82	52.96	0.04	30.18	78.43	4556.95	—	—	—
Leva	62388.45	241.81	2650.00	13133.00	5599.00	7.69	—	35175.71	64245.00	15	283	250
\$	480.40	1.86	51.14	95.05	40.52	0.05	—	253.00	462.19	—	—	—
Dr.	18102.20	226.28	14806.75	1683.15	916.05	16.74	—	—	6733.70	2	98	76
\$	295.10	3.69	241.17	27.41	14.91	0.27	—	—	91.00	—	—	—

of a diplomat, something of a soldier, and all three great qualities cemented, welded, riveted together by an ever present sense of the boundless importance of the great work which they have set their devoted hands to do." pp. 258—261.

We are fortunate indeed in being the first mission to enter Liberia at a point some 40 kilo-

metres inland from the coast in the very "bush", surrounded by peoples hitherto untouched by the influence of the Gospel; and the beginning made promises encouraging results for the future.

W. K. I.

## Statistical Report of the European Division of the General

Name of Conference or Mission	No. of Churches	Previous Membership	By baptism	By vote	By letter	Total gains	By apostasy	By death	By letter	Total losses	Net gain	Present Membership	Ordained Minist.	Licensed Minist.	Lic. Missionaries	Other Workers	Colporteurs	Total Workers
1	2	3	4	5	6	7	8	9	10	11	12	13	14	15	16	17	18	19
<b>ALLRUSSIAN UNION*.....</b>	..	...	..	..	..	..	..	..	..	..	..	...	2	..	..	14	..	16
Allrussian Union District.....	6	355	—	1	66	67	9	1	65	75	-8	347	2	2	5	1	—	10
<b>North Russian Union.....</b>	..	...	..	..	..	..	..	..	..	..	..	...	1	1	..	1	..	3
Neva Conference.....	22	438	1	4	5	10	1	1	2	4	6	444	3	—	2	—	—	5
North West Russian Conf.	15	263	6	5	5	16	2	—	1	3	13	276	2	2	—	—	—	4
Upper Volga Conference.....	14	284	5	6	3	14	8	—	5	13	1	285	2	—	3	—	—	5
White Sea Mission.....	5	22	—	—	1	1	—	—	—	—	—	23	1	1	—	—	—	2
<b>Total</b>	56	1007	12	15	14	41	11	1	8	20	21	1023	9	4	5	1	—	19
<b>All Ukrainian Union.....</b>	..	...	..	..	..	..	..	..	..	..	..	...	1	..	..	3	..	4
Black Sea Conference.....	32	624	13	1	12	26	5	1	13	19	7	631	3	2	2	—	—	7
Central Dniepr Conference..	59	1325	35	1	19	55	8	2	16	26	29	1354	3	3	3	—	—	9
Podol Conference.....	57	1358	1	7	14	22	8	6	23	37	-15	1343	3	1	4	—	—	8
Volhynian Conference.....	30	499	1	6	19	26	6	—	20	26	—	499	2	—	2	—	—	4
Asow Conference.....	28	535	6	8	15	29	4	—	15	19	10	545	1	4	1	—	—	6
Lower Dniepr Mission.....	12	313	14	28	14	56	15	1	9	25	31	344	1	1	2	—	—	4
Upper Dniepr Mission.....	10	141	1	—	2	3	1	—	3	4	—	140	1	2	1	—	—	4
Kiev District.....	15	401	6	—	6	12	19	—	37	56	-44	357	1	3	2	—	—	6
<b>Total</b>	243	5196	77	51	101	229	66	10	136	212	17	5213	16	16	17	3	—	52
<b>South East Russian Union....</b>	..	...	..	..	..	..	..	..	..	..	..	...	1	..	..	3	..	4
Cuban Black Sea Conference	27	554	3	—	8	11	22	—	2	24	-13	541	1	1	2	—	—	4
Central Caucasian Confer...	29	685	5	2	3	10	11	1	1	13	-3	682	3	1	1	—	—	5
Transcaucasian Mission.....	14	374	12	—	2	14	6	—	10	16	-2	372	2	—	4	—	—	6
Don Mission.....	25	665	1	4	4	9	3	2	4	9	—	665	2	1	3	—	—	6
Crimean Mission.....	8	216	4	1	1	6	—	—	4	—	-6	222	3	—	1	—	—	4
<b>Total</b>	103	2494	25	7	18	50	42	3	17	62	-12	2482	12	3	11	3	—	29
<b>East Russian Union.....</b>	..	...	..	..	..	..	..	..	..	..	..	...	1	..	..	2	..	3
German Volga Conference..	29	692	4	6	9	19	5	1	4	10	9	701	2	1	3	—	—	6
Lower Volga Conference....	13	332	—	—	—	—	4	—	4	8	-8	324	2	—	1	—	—	3
Central Volga Mission.....	5	118	1	1	1	3	1	—	6	7	-4	114	—	1	1	—	—	2
Central Asiatic Mission.....	11	292	7	2	—	9	14	—	14	28	-19	273	2	—	1	—	—	3
<b>Total</b>	58	1434	12	9	10	31	24	1	28	53	-22	1412	7	2	6	2	—	17
<b>Siberian Union.....</b>	..	...	..	..	..	..	..	..	..	..	..	...	1	..	..	2	..	3
Omsk District.....	7	203	1	—	3	4	1	—	6	7	-3	200	—	1	—	—	—	1
Central Siberian Conference	37	684	15	8	3	26	16	7	14	37	-11	673	3	1	—	—	—	4
Irtysk Conference.....	31	586	4	—	40	44	6	1	34	41	3	589	3	1	1	—	—	5
West Siberian Conference...	19	497	—	7	2	9	17	3	11	31	-22	475	2	—	2	—	—	4
North Siberian Mission.....	9	261	—	—	—	—	1	—	3	4	-4	257	1	—	2	—	—	3
East Siberian Mission.....	6	159	5	—	—	5	1	1	1	3	2	161	1	1	—	—	—	2
<b>Total</b>	109	2390	25	15	48	88	42	12	69	123	-35	2355	11	4	5	2	—	22
<b>Dalne Wostotchn. Un. Miss.</b>	..	...	..	..	..	..	..	..	..	..	..	...	1	..	..	1	..	2
Coastal Region.....	23	495	8	1	13	22	3	4	13	20	2	497	1	2	1	—	—	4
Amur Mission.....	4	46	—	—	4	4	—	1	2	3	1	47	—	1	1	—	—	2
Transbaicalian Mission.....	3	16	1	—	6	7	—	—	—	—	—	23	1	—	—	—	—	1
<b>Total</b>	30	557	9	1	23	33	3	5	15	23	10	567	3	3	2	1	—	9
<b>Grand Totals for Russia</b>	605	13433	160	99	280	539	197	33	338	568	-29	13404*	62	34	51	27	—	174

\* Report for the fourth quarter 1927.

Conference of S. D. A. for the Quarter Ending March 31, 1928.

Tithe	Tithe per Capita	Offerings to Mission (except Sabbath Sch. Off.)	Sabbat School Offerings (12 Sabbaths)	13th Sabb. School Offerings	Mission Offerings per Capita and per Week	Special Offerings	Local Church Work	Books Sales	S. S.	Membership	Average Attendance
20	21	22	23	24	25	26	27	28	29	30	31
Rbl. 3965.71	11.17	1552.78	438.98	39.00	0.44	—	748.90	—	6	389	375
\$ 2044.19	5.76	800.40	226.28	20.10	0.22	—	386.00	—	—	—	—
Rbl. 1985.31	4.53	879.66	230.89	30.30	0.20	—	94.00	—	22	449	503
Rbl. 1258.79	4.80	377.80	118.73	9.16	0.14	—	31.40	—	15	276	325
Rbl. 1619.32	5.70	685.65	122.57	12.45	0.22	—	81.60	—	14	273	309
Rbl. 170.27	7.73	57.00	9.00	4.00	0.24	—	5.00	—	5	23	27
Rbl. 5033.69	5.00	2000.11	481.19	55.91	0.19	—	212.00	—	56	1021	1164
\$ 2594.68	2.58	1030.98	248.03	28.82	0.10	—	109.30	—	—	—	—
Rbl. 2106.34	3.37	743.40	263.97	24.02	0.13	—	301.70	—	32	689	609
Rbl. 3152.33	2.37	810.94	358.44	37.57	0.07	—	210.70	—	59	1503	1592
Rbl. 3045.96	2.24	799.12	456.10	51.93	0.07	—	329.20	—	57	1434	1311
Rbl. 1268.48	2.54	314.42	172.85	19.32	0.08	—	120.50	—	30	326	508
Rbl. 2202.27	4.12	638.95	283.76	27.43	0.14	—	239.60	—	28	599	518
Rbl. 961.53	3.07	342.36	127.44	13.23	0.12	—	234.60	—	12	378	354
Rbl. 635.44	4.50	215.93	117.55	12.78	0.19	—	23.50	—	10	162	151
Rbl. 1170.65	2.91	497.21	166.82	10.51	0.13	—	115.40	—	15	401	328
Rbl. 14543.00	2.80	4362.33	1946.93	196.79	0.10	—	1585.20	—	243	5692	5371
\$ 7496.40	1.44	2248.62	1003.57	101.44	0.05	—	817.20	—	—	—	—
Rbl. 520.64	0.93	140.67	66.47	6.98	0.03	—	17.40	—	27	602	624
Rbl. 820.50	1.20	164.27	92.26	6.34	0.03	—	37.80	—	29	777	809
Rbl. 1442.57	3.88	412.18	151.90	14.64	0.12	—	53.70	—	14	403	450
Rbl. 2387.09	3.59	1037.09	282.11	30.93	0.16	—	101.80	—	25	757	677
Rbl. 371.99	1.72	169.75	60.64	5.16	0.08	—	9.20	—	8	236	247
Rbl. 5542.79	2.22	1923.96	653.38	64.05	0.08	—	219.90	—	103	2775	2807
\$ 2857.10	1.14	991.74	336.79	33.03	0.04	—	113.40	—	—	—	—
Rbl. 2047.32	2.96	417.13	213.36	21.35	0.07	—	119.60	—	29	703	499
Rbl. 1130.60	3.40	187.44	74.03	7.24	0.06	—	64.10	—	13	330	230
Rbl. 645.67	5.47	206.01	60.03	1.80	0.17	—	43.90	—	5	115	83
Rbl. 1651.88	5.66	399.83	127.62	11.87	0.14	—	26.40	—	11	273	192
Rbl. 5475.47	3.81	1210.41	475.04	42.26	0.09	—	254.00	—	58	1421	1004
\$ 2822.40	1.96	623.92	244.87	21.78	0.05	—	130.90	—	—	—	—
Rbl. 819.98	4.03	333.89	115.84	18.01	0.18	—	57.80	—	7	206	197
Rbl. 1282.57	1.87	247.06	183.77	18.34	0.05	—	59.70	—	37	704	279
Rbl. 1156.09	1.97	322.97	161.32	11.84	0.06	—	36.50	—	31	636	235
Rbl. 1634.25	3.29	311.87	148.30	16.24	0.07	—	212.20	—	19	513	266
Rbl. 679.47	2.60	152.51	100.00	8.73	0.08	—	40.70	—	9	286	87
Rbl. 586.23	3.68	163.47	57.47	6.77	0.11	—	13.40	—	6	180	138
Rbl. 6157.69	2.57	1531.77	766.70	78.93	0.08	—	420.30	—	109	2525	1202
\$ 3174.06	1.32	789.58	395.21	40.68	0.04	—	216.60	—	—	—	—
Rbl. 885.16	3.80	607.82	324.46	35.68	0.15	—	45.20	—	23	525	418
Rbl. 259.90	5.65	60.28	33.81	3.20	0.16	—	3.50	—	4	55	24
Rbl. 165.10	10.31	44.20	21.88	3.85	0.33	—	1.80	—	3	23	14
Rbl. 2310.16	4.15	712.30	380.15	42.73	0.15	—	50.50	—	30	603	456
\$ 1190.81	2.14	367.16	195.95	22.02	0.08	—	26.00	—	—	—	—
Rbl. 43028.51	3.20	13293.66	5142.37	519.67	0.11	—	3490.80	—	605	14426	12379
\$ 22179.64	1.65	6852.40	2650.70	267.87	0.06	—	1799.40	—	—	—	—

## Statistical Report of the European Division

Name of Conference or Mission	No. of Churches	Previous Membership	By baptism	By vote	By letter	Total gains	By apostasy	By death	By letter	Total losses	Net gain	Present Membership	Ordained Minist.	Licensed Minist.	Lic. Missionaries	Other Workers	Colporteurs	Total Workers	
1	2	3	4	5	6	7	8	9	10	11	12	13	14	15	16	17	18	19	
<b>Arabic Union Mission.....</b>																			
Egypt .....	3	90	14	1	—	15	1	—	—	1	14	104	2	1	6	2	3	14	
Syria .....	2	93	6	—	1	7	—	1	—	—	5	98	1	—	4	—	—	5	
Mesopotamia .....	1	21	—	—	—	—	—	—	—	2	—	21	—	—	1	—	—	1	
	6	204	20	1	1	22	2	1	—	3	19	223	3	1	11	2	3	20	
<b>East African Union Mission..</b>																			
Kenya.....	6	923	256	—	—	256	4	2	7	13	243	1166	2	2	4	2	—	10	
Mwanza.....	5	268	40	—	7	47	4	—	—	4	43	311	3	2	2	—	—	7	
Pare.....	6	252	29	—	11	40	10	—	11	21	19	271	—	1	2	—	—	3	
Ruanda-Urundi.....	4	122	—	—	—	—	5	1	—	6	—	116	2	1	1	—	—	4	
Uganda.....	1	6	—	—	1	1	—	—	—	—	1	7	1	—	—	—	—	1	
	22	1571	325	—	19	344	23	3	18	44	300	1871	8	6	9	2	—	25	
<b>Ethiopian Union Mission.....</b>																			
Central Abyssinia.....	2	46	1	—	—	1	—	—	—	—	1	47	1	2	1	—	—	4	
Eastern Abyssinia.....	1	2	—	—	—	—	—	—	—	—	—	2	1	—	—	—	—	1	
Western Abyssinia *.....	1	9	—	—	—	—	—	—	—	—	—	10	1	1	—	—	—	2	
Eritrea.....	1	21	24	1	—	25	1	2	5	8	17	38	1	—	—	—	—	1	
	5	78	26	1	—	27	1	2	5	8	19	97	4	3	1	—	—	8	
<b>West African Missions.....</b>																			
Sierra Leone **.....	4	150	—	—	—	—	—	—	—	—	—	150	1	—	3	—	—	4	
Liberia.....	1	2	—	—	—	—	—	—	—	—	—	2	—	1	1	—	—	2	
Gold Coast.....	4	397	—	—	—	—	—	—	2	2	—2	395	1	1	—	—	—	2	
Nigeria.....	4	514	—	—	—	—	—	—	—	—	—	514	1	2	2	—	—	5	
	13	1063	—	—	—	—	—	—	2	2	—2	1061	3	4	6	—	—	13	
<b>Miscellaneous Missions.....</b>																			
Faroe Islands.....	1	29	2	—	—	2	—	—	—	—	2	31	—	1	—	—	1	2	
Iceland ***.....	4	278	—	—	—	—	—	—	—	—	—	278	1	1	1	1	3	7	
Madagascar.....	1	9	—	—	3	3	—	—	2	2	1	10	2	—	1	2	—	5	
Mauritius.....	6	179	15	—	3	18	—	1	6	7	11	190	1	—	3	4	3	11	
Persia.....	7	148	—	—	—	—	—	—	—	—	—	148	3	—	8	2	—	13	
Turkey.....	1	65	—	—	2	2	—	—	—	—	2	67	1	—	1	1	1	4	
	20	708	17	—	8	25	—	1	8	9	16	724	8	2	14	10	8	42	
<b>Totals for Missions</b>	<b>66</b>	<b>3624†</b>	<b>388</b>	<b>2</b>	<b>28</b>	<b>418</b>	<b>26</b>	<b>7</b>	<b>33</b>	<b>66</b>	<b>352</b>	<b>3976</b>	<b>26</b>	<b>16</b>	<b>41</b>	<b>14</b>	<b>11</b>	<b>108</b>	

\* Report for 3rd and 4th quarters.

\*\* Report for 2nd, 3rd and 4th quarters.

\*\*\* Financial Report only received.

† Greece not now being included here.

## MISSIONS, ADMINISTRATION AND COMMERCE.

In an article written by Thomas Welsh appearing under the above title in the 1926 Christmas number of the Elder Dempster Magazine, indicating the "trinity which has been most concerned with Africa during the last half century" the following interesting tribute is paid to the aggressive work of missions and the unselfish service of the missionary:

"So far as length of service goes", the writer says, "the Missionary leads; from Cape to Cairo, from Morocco to Natal, he has led always and everywhere. Kipling in the "Lost Legion" speaks of its members as those who "Skirmish ahead of the church"; well, no "Lost Legion", and no

administration ever skirmished ahead of Christian missions.

"The work of the Missionary is unselfish; he does longer tours of service, he receives a bare living wage, he dwells amongst the people, he is serving, sharing their joys and sorrows; helping the helpless and relieving the distressed. Those he serves are often unresponsive, and may even resent his presence because his life is to them a perpetual reproach. No segregation for him!

"Mary Slessor of Calabar started her life work on a pay of £ 60.— a year and quarters which, for most of her life, was a poor native house. For thirty-eight years she laboured, and I do not suppose she ever saved a penny; yet she saved and enriched many lives."

Missions for the fourth Quarter 1927.

Tithe	Tithe per Capita	Offerings to Mission (except Sabb.-Sch. Off.)	Sabbat School Offerings (12 Sabbaths)	13th Sabb. School Offerings	Mission Offerings per Capita and per Week	Special Offerings	Local Church Work	Books Sales	S. S.	Membership	Average Attendance
20	21	22	23	24	25	26	27	28	29	30	31
394.00	4.38	866.53	90.36	8.40	0.82	.....	.....	232.70	6	117	114
307.10	3.30	110.54	31.52	5.70	0.12	.....	.....	.....	4	93	85
154.10	7.34	174.90	73.45	5.86	0.93	.....	.....	.....	1	32	28
\$ 855.20	4.19	1151.97	195.33	19.96	0.51	---	---	232.70	11	242	227
852.10	0.92	1272.48	283.30	62.85	0.14	25.76	.....	.....	111	5330	5498
396.60	1.48	549.07	125.28	29.10	0.20	.....	.....	.....	35	1608	1701
179.80	0.71	571.00	86.60	33.88	0.21	.....	.....	.....	12	800	810
164.40	1.34	119.15	44.06	18.27	0.11	.....	.....	.....	15	1481	1251
45.50	7.58	74.52	16.84	3.89	1.22	.....	.....	.....	1	17	40
\$ 1638.40	1.04	2586.22	556.08	147.99	0.16	25.76	---	---	174	9436	9300
186.00	4.04	94.63	51.00	5.10	0.25	.....	.....	.....	2	47	38
35.60	17.80	18.45	9.78	1.46	1.14	.....	.....	.....	1	18	15
85.80	4.77	49.98	16.12	9.78	0.32	.....	.....	.....	2	44	44
61.60	2.93	25.00	11.15	1.28	0.14	.....	.....	.....	4	38	40
\$ 369.00	4.73	188.06	88.05	17.62	0.28	---	---	---	9	147	137
673.40	4.49	101.08	215.15	.....	0.05	.....	.....	.....	17	469	520
46.40	23.20	34.19	7.32	1.46	1.65	.....	.....	.....	1	2	13
647.40	1.63	1294.46	143.31	39.85	0.28	.....	.....	.....	18	641	351
407.80	0.79	250.51	127.27	30.26	0.06	.....	.....	.....	25	1121	799
\$ 1775.00	1.67	1680.24	493.05	71.57	0.16	---	---	---	61	2253	1683
40.52	1.40	219.96	34.70	11.06	0.70	.....	.....	.....	4	41	41
654.50	2.35	890.05	163.62	41.02	0.30	.....	.....	.....	3	261	258
148.40	16.49	59.38	18.41	5.39	0.71	.....	.....	821.08	5	266	159
1151.80	6.43	762.91	69.94	39.93	0.37	.....	.....	104.41	44	714	302
197.00	1.33	75.66	20.35	3.87	0.05	.....	.....	.....	7	74	81
266.40	4.10	93.84	40.84	13.61	0.17	.....	.....	86.73	3	75	62
\$ 2458.62	3.47	2101.80	347.86	114.88	0.28	---	---	1012.22	66	1431	903
\$ 7096.22	1.96	7708.29	1680.37	372.02	0.21	25.76	---	1244.92	321	13489	12250

Speaking at some length of the numerous difficulties, the heavy mortality accompanying the early days of the work at Calabar from which "concrete example we may envisage the experience of all missions", the writer closes the first section of his article with these words: "Perhaps we would appreciate Missionaries better if they acquiesced in a lower standard of life; it is unpleasant to most of us to live alongside a man or woman whose ideals and conduct are beyond our imaginings."

W. K. I.

JU-JU CUSTOMS.

It is wonderful what the grace of God has done through the preaching of His word by the faithful missionary for the heathen peoples steeped in grossest superstition and the most vile and

barbarous practices. Here are a few illustrations gleaned from reading matter on Nigeria taken from the diary of H. Cotterell, a dealer who came to the West Coast in 1863 and took notes on some of the customs then in vogue. At Bonny, a huge lizard was held sacred. If it was injured or molested by a native, he was killed; if by a European, he was fined £ 500 and no further trading was done with him. At Brass a *boa constrictor* was held sacred and no one was allowed to touch or harm it even for self-protection, on penalty of death. If the serpent happened to be in a house, which was not uncommon, the fetishman had to be brought in order to remove it by some enchantment. The native chiefs had power of life and death, as the people belonging to their houses were slaves brought from the interior.

(Continued on page 16.)

Recapitulation for Quarter

Name of Conference or Mission	No. of Churches	Previous Membership	By baptism	By vote	By letter	total gains	By apostasy	By death	By letter	Total losses	Net gain	Present Membership	Ordained Minist.	Licensed Minist.	Lic. Missionaries	Other Workers	Colporteurs	Total Workers
1	2	3	4	5	6	7	8	9	10	11	12	13	14	15	16	17	18	19
<b>European Division</b>	.....	.....	.....	.....	.....	.....	.....	.....	.....	.....	.....	.....	12	..	..	17	...	29
<b>German Inter-Union Association</b>	(3)																	
1. East German Union.....	376	14860	223	43	483	749	158	49	464	671	78	14938	71	22	43	19	181	336
2. West German Union.....	310	12006	249	30	91	370	181	29	121	331	39	12045	46	13	55	11	168	293
3. Central European Union..	193	9290	177	37	75	289	110	37	78	225	64	9354	43	21	40	32	150	286
Baltic Union.....	67	3640	2	14	3	19	26	13	6	45	-26	3614	17	12	8	.3	31	71
British Union.....	65	4546	33	17	21	71	28	21	17	66	5	4551	32	10	35	11	95	183
Czechoslovakian Union.....	88	2177	64	9	12	85	17	4	14	35	50	2227	13	4	6	13	57	93
Hungarian Union.....	61	1556	57	10	17	84	27	5	17	49	35	1591	8	8	11	5	65	97
Latin Union.....	86	2983	37	12	36	85	32	11	29	72	13	2996	37	17	53	2	48	157
Polish Union.....	86	2033	10	9	20	39	12	8	33	53	-14	2019	12	4	24	5	53	98
Rumanian Union.....	258	7944	29	49	261	339	71	25	258	354	-15	7929	25	12	48	11	53	149
Scandinavian Union.....	164	8183	27	12	8	47	84	29	46	159	-112	8071	33	10	29	8	100	180
Iberian Union Mission.....	13	456	—	—	3	3	—	—	2	2	1	457	7	7	8	—	14	36
Jugoslavian Union Mission..	71	1120	45	—	1	46	1	9	2	12	34	1154	5	1	6	—	64	76
Bulgarian Mission.....	15	258	5	3	6	14	3	1	6	10	4	262	2	5	2	1	10	20
Greecian Mission *.....	2	80	5	1	—	6	—	—	3	3	3	83	2	—	2	—	2	6
Missions *.....	66	3624	388	2	28	418	26	7	33	66	352	3976	26	16	41	14	10	107
Russian Unions *.....	605	13433	160	99	280	539	197	33	338	568	-29	13404	62	34	51	27	—	174
Totals 1st Quarter 1928:	2526	88189	1511	347	1345	3203	973	281	1467	2721	482	88671	453	196	462	179	1101	2391
Totals 1st Quarter 1927:	2435	84343	1565	294	1336	3195	1070	269	1452	2791	404	84747	432	191	425	191	1209	2447
Totals 1st Quarter 1926:	2312	80469	1837	293	1251	3381	1192	258	1349	2799	582	81051	421	207	403	174	1349	2544
Totals 1st Quarter 1925:	2152	75421	1881	240	738	2859	896	214	773	1960	899	76320	394	160	364	201	1485	2604
Totals 1st Quarter 1924:	1975	69305	2545	348	571	3464	630	179	698	1939	1525	70830	320	150	280	221	945	2031

\* Report for the fourth quarter of 1927.

Specification of Mission Offerings for the First Quarter 1928.

Name of Conference or Mission	Sabb. Sch. Off. (12 Sabbaths)	13th Sabbath Offer.	Weekly Offer.	Harvest Ingath. Offerings	Annual Offerings	Miscell. Offerings	Week of Sacrif. Offerings	Total Offerings for Foreign Miss.	Percentage of Offer. of Tithe	"Big Week" Fund	Europ. Relief Fund
	1	2	3	4	5	6	7	8	9	10	11
<b>European Division</b>											
<b>German Inter-Union Association</b>											
East German Union.....	\$ 6826.11	1692.09	1459.54	248.37	331.21	955.78	1.44	11514.54	19.0%	142.07	—
West German Union.....	\$ 5920.90	1310.13	1016.36	247.85	186.43	951.85	—	9633.52	19.3%	155.55	—
Central European Union ..	\$ 4984.29	1156.59	847.67	45.45	64.11	664.94	—	7763.05	20.1%	129.02	—
Baltic Union.....	\$ 749.37	235.48	166.89	58.68	42.63	—	—	1253.05	20.3%	—	—
British Union.....	\$ 4206.79	1529.95	—	143.58	143.27	614.14	31.93	6669.66	23.9%	7.05	10.38
Czechoslovakian Union ..	\$ 722.24	231.25	101.80	158.95	37.00	—	5.93	1257.17	21.4%	10.39	—
Hungarian Union.....	\$ 567.44	151.95	39.09	225.41	—	113.19	—	1097.08	35.4%	167.79	—
Latin Union.....	\$ 1779.10	729.32	155.92	168.13	132.37	8.43	—	2973.27	19.1%	68.17	—
Polish Union.....	\$ 653.02	137.40	65.59	24.13	14.21	21.33	5.04	920.72	27.3%	47.30	—
Rumanian Union.....	\$ 1755.81	522.25	152.94	308.38	301.78	10.18	24.48	3075.82	29.0%	36.22	—
Scandinavian Union.....	\$ 4750.74	1949.67	61.82	294.73	284.05	—	—	7341.01	31.6%	2569.18	—
Iberian Union Mission.....	\$ 346.16	126.93	8.27	150.27	—	8.94	—	640.57	35.7%	—	—
Jugoslavian Union Mission..	\$ 221.82	52.96	25.24	221.81	13.48	—	—	535.31	26.6%	30.18	—
Bulgarian Mission.....	\$ 95.05	40.52	6.54	31.96	12.64	—	—	186.71	38.8%	—	—
Greecian Mission.....	\$ 27.41	14.91	12.98	149.68	78.51	—	—	283.49	96.0%	—	—
Missions *.....	\$ 1680.37	372.02	71.32	4221.76	2907.14	108.62	399.45	9760.68	137.5%	25.76	—
Russian Unions *.....	\$ 2650.70	267.87	564.86	1556.70	4730.84	—	—	9770.97	44.0%	—	—
Totals 1st Quarter 1928:	\$ 37937.32	10521.29	4756.83	8255.84	9279.67	3457.40	468.27	74676.62	26.9%	3388.68	10.38
Totals 1st Quarter 1927:	\$ 36161.05	9612.09	7810.87	4801.54	4586.58	8315.95	607.58	71895.66	26.9%	268.87	21.95
Totals 1st Quarter 1926:	\$ 35130.26	8172.25	7997.29	4356.53	4143.61	7036.26	1022.39	69017.89	28.0%	105.12	96.13
						1159.30	—	Y. P. Coll.			

\* Report for 4th Quarter 1927.

Ending March 31, 1928.

Tithe	Tithe per Capita	Offerings to Mission (except Sabb. Sch. Off.)	Sabbath School Offerings (12 Sabbaths)	13th Sabbath School Offerings	Miss. Offerings per Capita and per Week	Spec. Offerings	Contributions for Local Church Work	Book and Periodical Sales	No. of Sabbath Schools	Membership	Average Attendance
61294.40	4.12	2996.34	6826.11	1692.09	0.06	142.07	10210.58	23304.99	376	16484	11834
50642.60	4.22	2402.49	5920.90	1310.13	0.06	135.55	7427.91	28379.03	310	13424	9720
39260.20	4.23	1622.17	4984.29	1156.59	0.06	129.02	6503.88	26592.05	198	9822	6837
6165.00	1.69	268.20	749.37	235.48	0.03	—	1486.28	3349.67	113	3815	2910
27931.70	6.14	932.92	4206.79	1529.95	0.11	17.43	2162.30	21948.40	119	4704	3504
5895.90	2.71	303.68	722.24	231.25	0.04	10.39	497.05	5407.36	87	2312	1840
3571.80	2.29	377.69	567.44	151.95	0.06	167.79	825.27	5751.57	62	1567	1217
15924.70	5.34	464.85	1779.10	729.32	0.08	68.17	432.20	9676.21	119	2627	2259
3541.70	1.74	130.30	653.02	137.40	0.04	47.30	—	2113.35	142	2334	1786
10706.10	1.35	797.76	1755.81	522.25	0.03	36.22	63.75	5454.84	298	10002	7794
31317.40	3.83	640.60	4750.74	1949.67	0.09	2569.18	3071.08	35088.13	223	7308	5574
1791.60	3.93	167.48	346.16	126.93	0.11	—	45.70	2404.10	18	418	392
2121.00	1.89	260.53	221.82	52.96	0.04	30.18	78.43	4556.95	96	1608	1292
480.40	1.86	51.14	95.05	40.32	0.05	—	253.00	462.19	15	283	250
295.10	3.69	241.17	27.41	14.91	0.27	—	—	91.00	2	98	76
7096.22	1.96	7708.29	1680.37	372.02	0.21	25.76	—	1244.92	321	13489	12250
22179.64	1.65	6852.40	2650.70	267.87	0.06	—	1799.40	—	605	14426	12379
290215.46	3.29	26218.01	37937.32	10521.29	0.07	3399.06	34856.83	175824.76	3104	104721	81914
267802.73	3.18	26122.52	36161.05	9612.09	0.07	290.82	37979.71	180375.20	3058	97949	79173
247026.67	3.06	25715.38	35130.26	8172.25	0.06	201.25	30137.62	194344.57	2865	90226	69687
242279.27	3.17	22342.70	34541.80	8037.43	0.06	717.73	16303.89	220089.38	2650	84879	67382
169181.10	2.40	20847.62	24302.54	6763.07	0.07	11248.48	11051.51	150187.76	2335	74193	59343

Harvest Ingathering Campaign 1927 in the European Division.

Date	Raised 1926	Raised 1927	Amount per Capita 1927	No. of Papers Ordered	Languages	
Baltic Union.....	October 1 — November 15	\$ 4917.41	\$ 4822.59	\$ 1.33	35800	German, Lettish, Esthonian, Russian, Yiddish
British Union.....	September — October.....	\$ 32357.87	\$ 36057.36	\$ 8.11	66200 (and 279000 Leaflets)	English
Cen. Europ. Union	September — October.....	\$ 15911.81	\$ 17518.16	\$ 1.90	83500	German
East German Union	August — October.....	\$ 24047.41	\$ 24874.58	\$ 1.68	160000	German
West Germ. Union	September — October.....	\$ 26007.34	\$ 27715.21	\$ 2.30	147000	German, Dutch
Czechoslov. Union	October 1 — November 30	\$ 3296.18	\$ 3699.76	\$ 1.71	33100	German, Czechish, Polish, Hungarian, Slovakian
Latin Union.....	September 1 — December 31	\$ 15448.30	\$ 20533.38	\$ 7.24	95570	French, German, Italian, Flemish, English, Spanish
Polish Union.....	October — December.....	\$ 1547.72	\$ 1841.77	\$ 0.97	19000	Polish, Russian, Ruthenian, German
Rumanian Union..	September 5 — November 30	\$ 1076.13	\$ 2393.21	\$ 0.32	33000	Rumanian, Hungarian, German, Russian
Scandinav. Union..	September 1 — November 1	\$ 20689.74	\$ 24021.52	\$ 3.01	91500	Danish, Norwegian, Swedish, Finnish
Bulgarian Union....	September — December.....	\$ 514.40	\$ 513.90	\$ 1.95	6700	Bulgarian, German
Hungarian Union....	November — December.....	\$ 4065.09	\$ 3174.82	\$ 2.10	10300	Hungarian, German
Iberian Un. Miss.		—	\$ 1020.92	\$ 2.29	6000	Spanish, Portuguese
Jugoslav. Un. Miss.		\$ 61.87	\$ 694.44	\$ 0.66	1650	Serbian, German, Rumanian, Hungarian
Missions .....		\$ 2395.75	\$ 2468.46	\$ 0.72	—	
Division Goal 1926.....		\$ 150000.—		Raised .....	\$ 152337.02	
Division Goal 1927.....		\$ 160000.—		Raised .....	\$ 171350.08	
Total Cost of Papers in 1926....		\$ 32283.55		Net Gain.....	\$ 120053.47	
Total Cost of Papers in 1927....		\$ 34716.46		Net Gain.....	\$ 136633.62	

## Report of the Home Missionary

	Baltic Union	British Union	Bulgarian Mission	Gen. Europ. Union	East German Union	West German Union	Czechoslov. Union	Greek Mission
1. No. of Churches and Comp.	67	99	15	193	376	310	88	2
2. Tot. numb. of Church Memb.	3614	4551	262	9354	14938	12045	2227	83
3. No. of Persons Reporting	1274	988	101	3744	8046	6389	1046	—
4. Perc. of Members Report.	35 %	22 %	39 %	40 %	53 %	53 %	47 %	—
<b>Report of Missionary Work:</b>								
a) Missionary Visits.....	6632	5751	943	18138	28062	24955	7338	127
b) Bible Readings.....	5185	1415	813	12195	25312	17341	8735	102
c) No of Persons tak. to Serv.	2337	644	309	709	1570	—	930	—
d) Hours of Christ. Help Work	5225	16263	413	7382	—	6020	1022	—
e) Treatments given.....	1486	795	253	2134	4542	1923	580	5
f) Periodicals distributed.....	10481	145594	634	82395	156941	156333	7085	—
g) Tracts distributed.....	1868	23957	117	2234	2658	1718	556	41
h) New Subs. to Periodicals..	331	338	151	243	305	168	192	—
i) Books distributed.....	1095	3137	33	1206	716	919	1080	13
j) Missionary Letters written	1190	2212	106	2149	3413	2327	2042	12
k) Missionary Letters received	571	1090	73	1122	1597	1103	765	5
SOULS WON.....	—	11	—	32	110	50	38	10

### Report of the Missionary Volunteer Department of the European Division for the First Quarter 1928.

	Baltic Union	British Union	Centr. Europ. Union	East German Union	West German Union	Czechoslov. Union	Hungarian Union	Iberian Union Miss.	Jugoslavian Union Miss.	Latin Union	Polish Union	Rumanian Union	Russian Unions	Scandinavian Union	Missions	Totals for the First Quarter 1928	Totals for the First Quarter 1927
No. of Societies.....	36	65	110	363	289	24	26	7	4	56	25	78	—	62	16	1161	974
Tot. M'bership of Soc.	871	1543	2605	5106	4458	424	416	84	70	807	472	1942	1245	1417	322	21782	19628
Members Reporting.....	388	423	815	2114	1492	220	199	60	—	356	252	1129	689	427	70	8634	7242
Perc. of Memb. Rep.	45 %	28 %	31 %	41 %	33 %	52 %	48 %	71 %	—	44 %	53 %	58 %	55 %	30 %	—	41 %	37 %
<b>Report of Miss. Work:</b>																	
1. Miss. and Sick Vis.	2511	1701	1632	5305	6771	921	2030	226	—	1372	1307	6308	754	1594	248	32680	29329
2. Bible Readings.....	1859	409	1212	3909	2041	938	3157	202	—	854	1823	7259	660	1018	316	25657	24938
3. Hours of Chr. H. W'k.	2895	8458	682	—	912	214	1623	81	—	613	16	6047	—	685	1087	23313	18884
4. Treatments Given.	665	304	262	783	307	43	313	10	—	96	28	679	—	126	8	3624	4735
5. Subscr. to Period.	103	112	67	89	—	30	10	11	—	119	—	47	—	524	12	1124	602
6. Pap. and Mag. Distr.	3696	54325	20008	37801	34752	1637	867	206	—	4612	801	1133	—	10929	98	170865	156815
7. Books Distributed.	386	1197	61	77	145	106	140	70	—	249	14	376	—	685	23	3529	4260
8. Tracts Distributed.	840	8369	130	265	101	59	595	1169	—	626	178	639	—	4203	60	17234	17746
9. Letters Written.....	707	861	307	799	443	511	396	45	—	398	109	515	78	728	67	5964	6302
10. Letters Received....	387	417	185	422	243	292	226	25	—	211	58	294	60	268	9	3097	3288
11. SOULS WON.....	—	5	6	47	19	3	8	—	—	7	—	16	—	7	10	128	139

§ No report.

(Continued from page 13.)

In all rivers of the Niger delta it was customary to make human sacrifices for all kinds of purposes. These were regulated by the ju-ju-man. At Bonny and Calabar, for instance, sacrifices were made to the god of the bar, i. e. the sandbank at the mouth of the river, where navigation was dangerous. An Albino woman, progeny of black parents, quite frequent on the Coast, was brought to the town and allowed free access to the houses for some time, where she was given rest and food as the purpose of her presence was generally known. On a certain day she would be taken in a canoe to the mouth of the river, tied hands and feet, upon which her back was broken across the beam of the canoe and then thrown into the water to the sharks which infested the place. This sacrifice was believed to propitiate the god of the

bar, who would thus allow ships to pass through safely. "This and other practices", the writer says, "were of frequent occurrence, and notwithstanding that strong remonstrances were made against them by the Europeans, they were continued for many years, either openly or in secret, until through missionary influences they were ultimately abandoned."

The late Bishop Crowther, a native, rescued by a British cruiser with several hundred slaves from a ship en route to Cuba, with his ministers has been instrumental, the writer says, for all these evil practices to come into disrepute. Also the ju-ju-house that was filled with human skulls and bones was no longer shown and finally destroyed, "as the people, which had gradually turned to Christianity, were ashamed of their former heathen customs."



Department for the First Quarter 1928.

Iberian Un. Miss.	Hungar. Union	Jugosl. Un. Miss.	Latin Union	Polish Union	Russian Unions	Ruman. Union	Scand. Union	Miss.	Tot. for the 1st Qu. 1928	Tot. for the 1st Qu. 1927
17	61	71	103	86	—	250	255	10	2003	1932
457	1591	1154	2996	2019	—	7944	8071	190	71496	69288
—	942	625	956	946	—	3953	1835	190	31235	30347
—	50 %	54 %	32 %	46 %	—	40 %	23 %	—	44 %	44 %
786	8515	2403	6212	4240	4035	29067	7433	484	155124	141781
660	12542	3590	4229	6896	6431	41449	4317	1110	152322	147000
77	2320	173	360	242	—	7876	701	50	18298	13474
304	3605	627	2367	401	—	22696	3732	1282	71359	50621
66	1361	318	827	183	—	4122	1184	117	19896	20156
1335	3394	695	15980	2195	—	6366	6134	607	651349	594603
6492	1445	1103	3233	472	—	3273	22998	141	72306	84739
16	14	—	300	—	—	833	3371	19	6281	4293
166	506	389	1290	84	—	1083	2680	64	14461	16718
410	1061	436	1296	327	446	1635	2173	124	21359	19764
132	685	266	678	174	287	804	1004	21	10397	10191
—	28	—	9	—	—	70	13	10	381	405

Our Native Workers and Schools in Heathen Africa, 4th Quarter 1927.

Name of Conference or Mission	Native Workers							Number in Baptismal Classes	Train. Schools		Station Schools		Out-Schools		Girls Schools		Medical M. Work.	
	Ord. Ministers	Lic. Ministers	Lic. Missionar.	Teachers	Colporteurs	Other Workers	Total		Number of	Enrolment	Number of	Enrolment	Number of	Enrolment	Number of	Enrolment	No. of Pers. grv. treatm.	No. of treat-ments given
1	2	3	4	5	6	7	8	9	10	11	12	13	14	15	16	17	18	19
<b>East African Union Mission..</b>	—	—	—	—	—	—	—	—	—	—	—	—	—	—	—	—	—	—
Kenya.....	—	—	—	176	—	—	176	191	1	39	4	295	162	5975	2	55	3	3781
Mwanza.....	—	—	—	57	—	—	57	251	1	26	4	180	38	981	1	4	4	4781
Pare.....	—	—	15	28	—	—	43	250	1	23	1	113	26	2271	1	19	—	—
Ruanda-Urundi.....	—	—	—	20	—	—	20	121	2	67	2	550	23	1138	1	31	6	8158
Uganda.....	—	—	—	4	—	—	4	20	—	—	1	38	—	—	—	—	—	—
	—	—	15	285	—	—	300	833	5	155	11	1176	249	10365	5	109	13	16720
<b>Ethiopian Union Mission.....</b>	—	—	—	—	—	—	—	—	—	—	—	—	—	—	—	—	—	—
Central Abyssinia.....	—	—	—	5	1	—	6	13	—	—	2	50	1	3	1	6	1	165
Eastern Abyssinia.....	—	—	—	—	—	—	—	—	—	—	1	16	—	—	—	—	—	290
Western Abyssinia.....	—	—	—	5	—	—	5	4	—	—	1	38	1	4	—	—	1	203
Eritrea.....	—	—	—	7	—	—	7	—	—	—	—	—	1	25	—	—	—	—
	—	—	—	17	1	—	18	17	—	—	4	104	3	32	1	6	3	658
<b>West African Missions.....</b>	—	—	—	—	—	—	—	—	—	—	—	—	—	—	—	—	—	—
Sierra Leone.....	1	5	9	—	—	9	24	95	1	27	—	—	15	343	1	4	2	405
Liberia.....	—	—	—	—	—	—	—	130	—	—	1	65	1	26	—	—	2	825
Gold Coast.....	1	2	6	2	—	—	11	160	—	—	2	142	2	52	—	—	—	820
Nigeria.....	—	4	4	—	—	15	23	—	—	—	—	—	—	—	—	—	—	—
	2	11	19	2	—	24	58	385	1	27	3	207	18	421	1	4	7	2050
<b>Totals</b>	<b>2</b>	<b>11</b>	<b>34</b>	<b>304</b>	<b>1</b>	<b>24</b>	<b>376</b>	<b>1235</b>	<b>6</b>	<b>182</b>	<b>18</b>	<b>1437</b>	<b>270</b>	<b>10818</b>	<b>7</b>	<b>119</b>	<b>23</b>	<b>19428</b>

We thank God for the power of the Gospel which to-day changes even vilest men into new creatures as in days of old, forming them after the image of our great Master.

W. K. I.

THE HOME MISSIONARY AND MISSIONARY VOLUNTEER DEPARTMENT REPORTS.

Knowing of the interest with which our fellow labourers read the *Quarterly Review* and study the many interesting tables of figures which it

contains, telling of the ever onward march of the work of God in our large Division, we take this opportunity to call attention to the Home Missionary and Missionary Volunteer Reports for the first quarter.

It will be noticed that nearly 1,000 more of our believers reported missionary work done the past quarter than during the corresponding quarter of 1927. The West German Union has the highest percentage of reporting members, viz., 55, closely followed, however, by Jugoslavia with 54, and the East German Union with 53.

(Continued on page 20.)

## Financial Report of the European Division

Name of Conference or Mission	Tithe		Sabbath School Offerings		13th Sabbath Offerings		Weekly Offerings		Harvest Ingathering	
	Loc.	Dollars	Loc.	Doll.	Loc.	Doll.	Loc.	\$	Loc.	Doll.
	1		2		3		4		5	
<b>Arabic Union Mission</b>										
Egypt.....	£ 80.14. 2	394.00	£ 18.10. 0	90.36	£ 1.14. 3	8.40	£ 5. 8. 2	26.40	£128. 6. 7	626.60
Syria.....	£ 62.16. 8	307.10	£ 6. 9. 1	31.52	£ 1. 3. 6	5.70	£ 0. 1. 7	0.40	£ 18. 4. 6	89.20
Mesopotamia.....	Rs. 410.10	154.10	Rs. 201.01	73.45	Rs. 16.02	5.86	---	---	Rs. 99.04	36.47
		855.20		195.33		19.96		26.80		752.27
<b>East African Union Mission</b>										
Kenya.....	£ 174.11. 8	852.10	£ 58. 0. 1	283.30	£ 12.17. 4	62.85	---	---	£ 34. 9. 4	168.20
Mwanza.....	£ 81. 1. 8	396.60	£ 25.12. 9	125.28	£ 5.19. 2	29.10	---	---	£ 55.11. 2	271.50
Pare.....	£ 36.15.10	179.80	£ 17.14.10	86.60	£ 6.18.10	33.88	---	---	£ 2. 3. 0	10.50
Ruanda-Urundi.....	BFr. 5891.00	164.40	BFr.1578.40	44.06	BFr.654.35	18.27	---	---	BFr. 7.50	0.22
Uganda.....	£ 9. 6. 8	45.50	£ 3. 9. 0	16.84	£ 0.15.11	3.89	---	---	---	---
		1638.40		556.08		147.99		---		450.42
<b>Ethiopian Union Mission</b>										
Central Abyssinia.....	Th. 380.90	186.00	Th. 104.49	51.00	Th. 10.45	5.10	Th. 37.00	18.09	---	---
Eastern Abyssinia.....	Th. 73.00	35.60	Th. 20.00	9.78	Th. 3.00	1.46	Th. 7.80	3.80	---	---
Western Abyssinia*.....	Th. 176.00	85.80	Th. 33.00	16.12	Th. 20.00	9.78	Th. 18.00	8.78	---	---
Eritrea.....	Lire 119.40	61.60	Lire 201.00	11.15	Lire 23.00	1.28	Lire 38.00	2.11	---	---
		369.00		88.05		17.62		32.78		---
<b>West African Missions</b>										
Sierra Leone**.....	£ 137.17. 6	673.40	£ 44. 1. 0	215.15	---	---	---	---	£ 14.19. 2	73.06
Liberia.....	£ 9.10. 0	46.40	£ 1.10. 0	7.32	£ 0. 6. 0	1.46	---	---	---	---
Gold Coast.....	£ 132.10.10	647.40	£ 29. 6.10	143.31	£ 8. 3. 2	39.85	---	---	£ 259.10. 2	1267.48
Nigeria.....	£ 83.10. 0	407.80	£ 26. 1. 2	127.27	£ 6. 3.11	30.26	---	---	£ 34.12.10	169.19
		1775.00		493.05		71.57		---		1509.73
<b>Miscellaneous Missions</b>										
Faroe Islands.....	DKr. 151.00	40.52	DKr. 129.30	34.70	DKr. 41.23	11.06	DKr. 27.00	7.24	DKr. 737.00	197.76
Iceland.....	IKr. 2949.00	654.50	IKr. 737.12	163.62	IKr. 185.00	41.02	---	---	IKr. 3163.39	703.32
Madagascar.....	FFr. 3341.50	148.40	FFr. 415.10	18.41	FFr. 121.85	5.39	---	---	---	---
Mauritius.....	Rs. 3230.80	1151.80	Rs. 200.14	69.94	Rs. 108.08	39.93	---	---	Rs. 1706.15	608.26
Persia.....	Krs. 1814.50	197.00	Krs. 187.55	20.35	Krs. 35.70	3.87	---	---	---	---
Persia.....	Ltq. 478.50	266.40	Ltq. 73.36	40.84	Ltq. 24.45	13.61	Ltq. 8.06	4.50	---	---
		\$ 2458.62		\$ 347.86		\$ 114.88		\$ 11.74		\$ 1509.34
<b>Grand Totals for Missions:</b>		\$ 7096.22		\$ 1680.37		\$ 372.02		\$ 71.32		\$ 4221.76

\* Includes 3rd and 4th quarters.

\*\* Includes 2nd, 3rd and 4th quarters.

## European Division of the General Conference of S. D. A.

Name	Address	No. of Buildings	No. of Acres	Capacity
1. Baltic Union School.....	Brivibas iela 11, Riga, Latvia.....	13	275	150
2. Czechoslovakian Mission School..	Lodenice, Prague, Czechoslovakia.....	3	44	70
3. Finland Mission School.....	Hameenlinna as Suomi (Finland).....	1	1	25
4. Friedensau Missionary Seminary..	Post Grabow, Bez. Magdeburg, Germany..	14	200	195
5. Latin Union Missionary Seminary	Collonges sous Salève, Hte. Savoie, France	7	707	115
6. Marienhöhe Missionary Seminary...	near Darmstadt, Germany.....	6	25	250
7. Naerum Mission School.....	Naerum, Denmark.....	2	4	80
8. Neandertal Missionary Seminary..	Post Mettmann, Rhineland, Germany.....	2	33	150
9. Norway Mission School.....	Onsrud, Algarheim, Norway.....	7	225	50
10. Poland Mission School.....	Bielsko Kamienica 230, Slask, Poland.....	1	14	25
11. Rumanian Mission School.....	Inst. Bibl., Str. Viilor 53, Dicosanmart, Rum.	3	10	60
12. Stanborough College.....	Stanborough Park, Watford, Herts, England	4	101	75
13. Swedish Mission School.....	Nyhyttan, Järnboas, Sweden.....	6	625	65
	Totals for 1927:	69	1627	1310
	Totals for 1926:	67	1622.7	1346
	Totals for 1925:	56	1569	1456
	Totals for 1924:	43	1622	1415
	Totals for 1923:	41	1661	1230

Missions for the fourth Quarter 1927 specified.

Annual Offerings		Miscellaneous Offerings		Self Denial Week		Total Offerings to Foreign Missions		Percentage of Offer. of Tithe	"Big Week" Fund	
Loc. Curr'y	Doll.	Loc. Curr'y	Doll.	Loc. Curr'y	Doll.	Loc. Curr'y	Dollars		Loc. Curr'y	Doll.
6		7		8		9		10	11	
£ 26. 1. 0	127.20	£ 0.12. 4	3.00	£ 17. 1. 4	83.33	£ 197.13. 8	965.29	244.9 %	---	---
£ 1. 0. 6	5.04	---	---	£ 3. 5. 0	15.90	£ 30. 4. 2	147.76	48.1 %	---	---
Rs. 250.00	91.50	Rs. 128.00	46.93	---	---	Rs. 694.07	254.21	164.9 %	---	---
223.74		49.93		99.23		1367.26		159.8 %	---	
£ 226. 1. 8	1104.28	---	---	---	---	£ 331. 8. 5	1618.63	193.0 %	£ 5. 3. 6	25.76
£ 55. 0. 9	268.72	£ 1.16. 3	8.85	---	---	£ 144. 0. 1	703.45	177.3 %	---	---
£ 114.15. 0	560.50	---	---	---	---	£ 141.11. 8	691.48	384.5 %	---	---
BFr.3705.35	103.42	BFr. 556.00	15.51	---	---	BFr. 6501.60	181.48	110.3 %	---	---
£ 15. 0. 2	73.30	£ 0. 5. 0	1.22	---	---	£ 19.10. 1	95.25	209.3 %	---	---
2110.22		25.58		---		3290.29		200.8 %	25.76	
Th. 103.00	50.29	---	---	Th. 53.75	26.25	Th. 308.69	150.73	81.0 %	---	---
Th. 30.00	14.65	---	---	---	---	Th. 60.80	29.69	83.4 %	---	---
Th. 32.34	15.80	---	---	Th. 52.00	25.40	Th. 155.34	75.88	88.4 %	---	---
Lire 350.00	19.43	Lire 63.00	3.46	---	---	Lire 675.00	37.43	60.7 %	---	---
100.17		3.46		51.65		293.73		79.6 %	---	
£ 1. 0. 9	5.07	---	---	£ 4.14. 0	22.95	£ 64.14.11	316.23	46.9 %	---	---
£ 7. 0. 0	34.19	---	---	---	---	£ 8.16. 0	42.97	92.6 %	---	---
£ 0.10. 0	2.44	---	---	£ 5. 0. 6	24.54	£ 302.10. 8	1477.62	228.2 %	---	---
£ 7.13.10	37.57	---	---	£ 8.19. 2	43.75	£ 83.10.11	408.04	100.0 %	---	---
79.27		---		91.24		2244.86		126.4 %	---	
DKr. 55.75	14.96	---	---	---	---	DKr. 990.28	265.72	655.7 %	---	---
IKr. 399.37	87.91	---	---	IKr. 445.00	98.82	IKr. 4929.88	1094.69	167.2 %	---	---
FFr.1337.85	59.38	---	---	---	---	FFr. 1874.80	83.18	56.0 %	---	---
Rs. 369.31	131.67	Rs. 64.47	22.98	---	---	Rs. 2448.15	872.78	75.7 %	---	---
Krs. 150.00	16.28	Krs. 8.10	0.87	Krs. 539.15	58.51	Krs. 920.50	99.88	50.7 %	---	---
Ltq. 150.00	83.54	Ltq. 10.42	5.80	---	---	Ltq. 266.29	148.29	55.6 %	---	---
\$ 393.74		\$ 29.65		\$ 157.33		\$ 2564.54		104.3 %	---	
\$ 2907.14		\$ 108.62		\$ 399.45		\$ 9760.68		137.5 %	\$ 25.76	

Report of the Educational Institutions for the Year 1927.

Grades			Teach-ers	Grades done	Library	Laboratory	Manual Tr. Fac.	Stud. Grad.	12 gr.	Graduated		Studs. entered Work
1-8	9-12	13-16								14 gr.	16 gr.	
---	107	---	10	9-12	800	yes	yes	8	8	---	---	35
---	28	---	3	9-12	450	yes	yes	6	6	---	---	28
---	19	---	3	9-11	250	some	none	4	---	---	---	8
---	156	27	11	9-14	3550	yes	yes	16	8	8	---	25
---	36	98	12	9-14	1750	yes	some	3	1	2	---	56
---	150	48	12	8-14	2000	yes	yes	20	20	---	---	10
---	41	---	4	9-12	500	some	Garden	7	7	---	---	18
---	112	---	7	---	1500	none	yes	19	---	---	---	13
---	33	---	4	9-12	325	yes	none	7	7	---	---	12
---	25	---	2	9-12	150	some	none	---	---	---	---	8
---	30	---	5	9-12	160	none	some	---	---	---	---	9
---	96	36	14	9-14	1000	yes	yes	13	---	7	---	9
---	72	---	6	9-12	950	yes	yes	16	---	---	---	44
---	905	209	93	---	13385	---	---	119	57	17	---	275
101	1041	116	79	---	11385	---	---	72	29	12	5	270
105	1096	104	89	---	12955	---	---	98	72	26	---	334
132	750	310	89	---	9940	---	---	94	56	8	26	267
236	525	306	81	---	8170	---	---	170	95	40	---	162

## Report of S. D. A. Church Schools in the European Division for the Year 1927.

Place:	No. of Teachers	Enrollment	Building	Estimated Value of Equipment	Expense of Annual Maintenance
<b>British Union:</b>					
Plymouth .....	2	26	—	£ 30. 0. 0	£ 298. 0. 0
Stanborough Park .....	4	92	—	£ 50. 0. 0	£ 450. 0. 0
Walthamstow .....	2	26	—	£ 35. 0. 0	£ 326. 0. 0
West London .....	2	42	—	£ 50. 0. 0	£ 302. 0. 0
<b>East German Union:</b>					
Friedensau, Post Grabow, Bez. Magdeburg .....	1	12	—	—	—
<b>Latin Union:</b>					
La Lignière, Gland, Switzerl. Chaux-de-Fonds, Temple Allemand .....	1	10	—	—	SFr. 3300.—
Allemand .....	1	12	—	—	SFr. 4000.—
<b>Scandinavian Union:</b>					
Stockholm, Tunnelgatan 25.	3	30	—	SKr. 1600.—	SKr. 5598.—
Oslo, Kingogate 1.....	2	36	—	NKr. 700.—	NKr. 7000.—
Copenhagen, Suomisvej 5, V.	3	40	—	DKr. 2000.—	DKr. 4610.—
Aarhus, Nørre Allee 30....	3	50	—	DKr. 1000.—	DKr. 6400.—
Skodsborg, Badesanatoriet..	2	33	—	DKr. 800.—	DKr. 6180.—
Gredstedbro .....	1	10	—	DKr. 360.—	DKr. 1370.—
Jerslev, Pr. Brønderslev .....	1	15	DKr. 6000.—	DKr. 400.—	DKr. 2000.—
Frederikshavn "Salem" Allee	1	12	DKr. 3500.—	DKr. 500.—	DKr. 1700.—
Esbjerg, Finlandsgade 28....	1	13	—	DKr. 300.—	DKr. 1600.—
<b>Totals:</b> 16 Schools	30	459	\$ 2554.—	\$ 2856.—	\$ 17866.30

## European Division of the General Conference of S. D. A. Report of the Sanitariums for the Year 1927.

Name	Address	No. of Buildings	No. of Acres	Capacity	Persons Treated	Charity Work	Physicians	Nurses	Other Empl.	Total Empl.
1. Skodsborg Sanitarium.....	Skodsborg, Denmark.....	22	8½	340	1400	\$ 21377.40	5	96	143	244
2. Sanitarium "Waldriede"....	Berlin-Zehlendorf-West, Germ.	4	8	120	1297	\$ 1816.15	4	46	23	73
3. "The Stanboroughs" (G. H. A. Ltd.).....	Watford, Herts. England....	3	17	65	556	\$ 5493.40	2	25	29	56
4. Lake Geneva Sanitarium....	Gland, Ct. Vaud, Switzerland	2	90	70	475	\$ 440.40	2	10	51	63
5. Aibling Sanitarium.....	Kurhaus Wittelsbach, Oberb., Germany .....	2	—	138	22	\$ 773.80	—	2	16	18
6. Oslo Health Home.....	Akersgatan 74, Oslo, Norway	1	—	20	900	\$ 1000.00	—	20	16	36
7. Kendu Mission Hospital....	Gendia, P. O. Kisumu, Kenya Colony .....	4	10	35	7870	—	1	2	9	12
8. Hultafors, Sanitarium.....	Hultafors, Sweden.....	5	172	100	700	—	1	6	43	50
<b>Totals for 1927:</b>		43	305½	888	13220	\$ 30901.15	15	207	330	552
<b>Totals for 1926:</b>		40	203¼	870	20589	\$ 31642.28	15	188	319	518
<b>Totals for 1925:</b>		34	136½	794	6290	\$ 27109.63	14	186	276	476
<b>Totals for 1924:</b>		38	151	691	5201	\$ 20497.03	13	201	274	488
<b>Totals for 1923:</b>		40	157	730	4762	\$ 17758.80	15	195	275	485

(Continued from page 17.)

A glance at the items of Missionary work will reveal an encouraging growth practically all the way through. We are particularly pleased to notice the faithfulness of our people in doing gospel and Bible work. 13,500 more missionary visits were made, and 5,000 Bible readings more given during the past quarter. There is also a decided increase in the number of periodicals distributed, viz. 57,000.

Reflecting upon the Missionary Volunteer Report, it will readily be noticed that there has been an increase of 187 new societies in our Division and a membership increase of 2,160, comparing the two quarters of 1927 and 1928. Our young people have also shown great faithfulness in reporting and there has been a 4% increase in reporting members for the quarter. The Iberian Union heads

(Continued on page 22.)

Report of the Treatment Rooms for the Year 1927.

Name	Address	Capacity	Persons Treated	Charity Work	Physicians	Nurses	Other Empl.	Total Empl.
1. Bergen Treatment Rooms:	Kurbadet, V. Torvgate, 11 Bergen, Norway.....	45	140	\$ 39.50	—	4	—	4
2. Nyhyttan Health Home....	Järnboas, Sweden.....	90	185	\$ 93.84	1	7	18	26
3. Stockholm Treatment Rooms	Humlegardsgatan 18, Stockholm, Sweden.....	100	700	\$ 220.65	—	9	5	14
4. Helsingfors Fysikaliska Inst.	Annegatan 7, Helsingfors, Finland.....	50	457	—	1	4	—	5
5. Charlottenbad .....	Charlottenstr. 22—24, Hamburg, Germany.....	250	23560	\$ 119.00	—	9	1	10
6. Coloniabad .....	Pantalconswall 42—44, Cologne, Germany.....	50	1680	\$ 11.90	—	2	—	2
Totals for 1927:		585	26712	\$ 484.89	2	35	24	61
Totals for 1926:		285	1140	\$ 318.85	2	39	23	64
Totals for 1925:		230	1050	\$ 1060.83	1	23	26	50
Totals for 1924:		220	1050	\$ 1164.47	1	26	25	52
Totals for 1923:		215	1050	\$ 824.45	1	26	23	50

European Division of the General Conference of S. D. A.  
Report of the Publishing Houses for the Year 1927.

Name	Address	Book Sales	Periodical Sales	Total Value Literature Sold	Buildings	Employees	Periodic's	Languages
1. Hamburg Publ. House *	Hamburg, Grindelberg 15 a, Germany.....	\$ 395465.80	\$ 217568.18	\$ 613033.98	9	135	14	3
2. Stanborough Press Ltd.	Watford, Herts, England....	\$ 97981.22	\$ 50301.00	\$ 148282.22	1	32	3	2
3. Norway Publish. House	Akersgaten 74, Oslo, Norway	\$ 29729.54	\$ 29553.00	\$ 59282.54	1	16	3	1
4. Denmark Publish. House	Suomisvej 5, Copenhagen, Denmark.....	\$ 27813.73	\$ 18861.01	\$ 46674.74	—	4	2	1
5. France Publishing House	Dammarie-les-Lys, (S. & M.) France.....	\$ 22425.69	\$ 19537.85	\$ 41963.54	1	14	3	2
6. Sweden Publish. House	Tunnelgaten 25, Stockholm, Sweden.....	\$ 29402.00	\$ 11709.00	\$ 41111.00	—	6	3	1
7. Czechoslov. Publ. House	Brno 12, Kralovo Pole, Czechoslovakia.....	\$ 29734.05	\$ 5439.40	\$ 35173.45	1	6	2	7
8. Finland Publish. House	Annegatan 7, Helsingfors, Finland.....	\$ 29810.00	\$ 4130.00	\$ 33940.00	—	5	3	2
9. Rumania Publish. House	Strada Labirint 116, Bukarest, Rumania.....	\$ 13877.89	\$ 7413.91	\$ 21291.80	1	10	5	3
10. Latvia Publishing House	Brivibas iela 11, Riga, Latvia	\$ 13887.40	\$ 4789.80	\$ 18677.20	—	4	2	1
11. Jugoslavia Publ. House	Petra Zrinjskog 13, Novi Sad, Jugoslavia.....	\$ 15446.22	\$ 1071.00	\$ 16517.22	1	4	3	3
12. Poland Publishing House	Aleja Roz 9, Warsaw, Poland	\$ 7269.97	\$ 3172.93	\$ 10442.90	1	2	3	6
13. Italy Publishing House	Via Trieste 17, Florence, Italy	\$ 9392.08	\$ 663.59	\$ 10055.67	1	2	1	1
14. Spain Publishing House	Apartado 492, Barcelona, Spain.....	\$ 8664.34	\$ 587.56	\$ 9251.90	—	3	2	1
15. Esthonia Publish. House	Merepuistee 14 a, Tallinna, Esthonia.....	\$ 6408.73	\$ 1082.58	\$ 7491.31	1	2	1	1
16. Iceland Depository.....	P. B. 262, Reykjavik, Iceland	\$ 5786.19	—	\$ 5786.19	—	—	1	1
17. Portugal Publish. House	Rua Joaquim Bonifacio, M. A. Lisbon, Portugal	\$ 4772.46	—	\$ 4772.46	—	1	—	1
18. Bulgaria Publish. House	Solunska 49, Sofia, Bulgaria	\$ 1327.38	\$ 1622.10	\$ 2949.48	1	1	1	1
19. South Kavirondo Press..	Gendia Mission, P. O. Kisumu Kenya, B. E. A.	\$ 910.16	—	\$ 910.16	2	2	—	6
20. Arabic Literature Society	Mataria, Cairo, Egypt.....	\$ 848.83	—	\$ 848.83	—	1	—	1
21. Turkey Depository.....	Box 109, Galata, Constantinople.....	\$ 452.37	—	\$ 452.37	1	1	—	2
22. Lithuanian Depository..	Maironio gve 22, Kaunas, Lithuania.....	\$ 346.98	—	\$ 346.98	—	1	—	1
Grand Totals for the Year 1927:		\$ 751753.03	\$ 377502.91	\$ 1129255.94	22	252	52	—
Grand Totals for the Year 1926:		\$ 834359.75	\$ 377564.09	\$ 1211923.84	22	247	48	—
Grand Totals for the Year 1925:		\$ 866892.18	\$ 330262.68	\$ 1197154.86	21	260	45	—
Grand Totals for the Year 1924:		\$ 776323.35	\$ 271975.65	\$ 1148299.00	17	245	44	—
Grand Totals for the Year 1923:		\$ 476947.04	\$ 178247.11	\$ 655194.15	21	231	42	—
Grand Totals for the Year 1922:		\$ 487078.33	\$ 93457.95	\$ 580536.28	20	250	39	—

\* Includes Holland, Austrian, Hungarian and Swiss Branches.

(Continued from page 20.)

the list with 71%, followed by Rumania with 58, and Czechoslovakia with 52. A corresponding growth in the amount of missionary work revealed in the Home Missionary Department is also noticed among the young people.

A letter recently received from the Suji Mission in the Tanganyika Territory in Africa tells of the organization of the missionary volunteer work even down in that far-away field. The report states that the 54 senior and 36 junior volunteers of a certain society "helped other people" 4,682 times. This is the way they express Christian help work. They paid a number of visits to the sick and wrote quite a few missionary letters, besides carrying 1,874 stones for the construction of our new church-building. Sister Winifred Clifford, in sending us this splendid report, adds: "It is quite hard work to carry these stones from a distance to the place required, and I would like our young people in the homeland to see our natives marching along the narrow path single-file, each carrying on his or her head a huge stone blasted from the place of rocks and singing weird but inspiring songs."

We look forward with real courage and greater expectations to the future when we think of the soul-saving and soul-conserving work carried on by our church-members and our young people throughout our Division. Steen Rasmussen.

## NOTES ON THE STATISTICAL REPORT.

88,671 is our membership at the end of the first quarter of 1928. This means a net gain of 482 souls, whereas 1858 were added to the church by baptism and vote.

Those of our readers that are interested in comparisons we refer to page 14 where at the end of the recapitulation by unions the totals of the corresponding quarters of the four previous years are given.

Greece is now a detached field like Bulgaria, i. e. directly under the European Division. Beginning with next quarter it will no longer be necessary to report for Greece a quarter late as we have to in the case of the far away fields.

The report of our Foreign Missions has also undergone a reconstruction. The former Egypto-Syrian Mission now includes Mesopotamia and has become the Arabic Union Mission. — Eritrea is connected with the Ethiopian Union Mission.

A few months ago when studying the yearly reports we rejoiced over the growth of the membership in our missions, for never before had

the net gain within a year reached 642. The present report shows a net gain of 352 for one quarter only, or 54.8% of last year's gain! Had Greece not been disconnected our foreign missions would have now passed the 4000 mark in membership. At present it stands at 3976.

Attention should be called to the Harvest Ingathering results in the mission fields. These are more than double that of previous years. — Heretofore Russia has not been able to report Harvest Ingathering Offerings, but now a beginning is made and the equivalent to \$ 1,556.70 was gathered.

At the last winter council in Vienna it was decided that 50% of the weekly offerings should remain in the field and be used as a fund for our poor people. Consequently in this report the weekly offerings (with the exception of Russia and the Missions where 100% is given) represent only 50% of the total receipts. But not all the unions have reported the other 50% in column 27 (Contributions for local church work). This should be adjusted in the second quarters' report.

Among other yearly reports of the various institutions a small survey of our church schools will be found on the pages of this "Quarterly". Our members know we have church schools although this is the first report published in our paper.

In closing an earnest request to all whom it may concern. Would it not be possible to send in to the Division the statistical report for the second quarter before August 1, say between July 20 and 25? This would enable us to have the "Quarterly" ready for distribution at our Division Summer Council August 15—22. The majority of the reports come in punctually, but one or two hold up the publication. This time it was Poland (May 9) and Rumania (May 18).

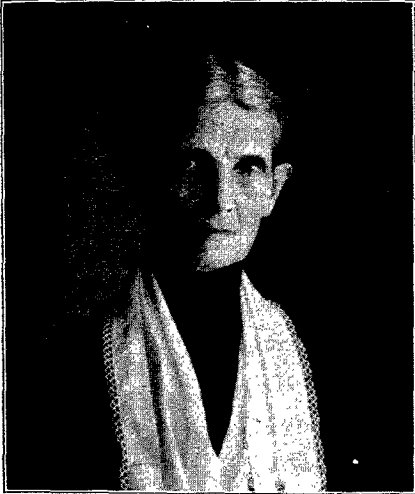
Berne, May 18, 1928.

E. Borm.

All who consecrate soul, body, and spirit to God, will be constantly receiving a new endowment of physical and mental power. The inexhaustible supplies of heaven are at their command. Christ gives them the breath of His own Spirit, the life of His own life. The Holy Spirit puts forth its highest energies to work in heart and mind. The grace of God enlarges and multiplies their faculties, and every perfection of the divine nature comes to their assistance in the work of saving souls. Through cooperation with Christ they are complete in Him, and in their human weakness they are enabled to do the deeds of Omnipotence." — "The Desire of Ages," p. 827.

## MISCELLANEOUS.

When the last number of the "Quarterly" was already in print we learned of the death, February 17, of Sister Conradi, the faithful companion of Elder L. R. Conradi, at their home in Hamburg. Though belated we pass on this word to the family of our readers. Sister Conradi, née Wakeham, accepted the message together with the Wakeham family under the ministry of Elder E. W. Farnsworth following a series of meetings



Mrs. L. R. Conradi.

at Dennison, Ia, in 1876. She united in wedlock with Brother Conradi in 1882 and came over to Europe with him in 1886. For many years in poor health and of very delicate physique she has borne her lot with great fortitude especially in view of the fact that the duties of her husband took him away from their home the largest part of the year. As a true missionary she gave little thought to herself in her condition and has been a source of great encouragement to Brother Conradi by her quiet, cheerful Christian bearing. Those present at the celebration of Elder Conradi's seventieth anniversary, March 20, 1926, will remember his touching testimony as to how much he owed to his dear companion in life for the success that has attended his labours. Sister Conradi has been laid to rest and it can be truly said of her that "their works do follow them". We extend to Elder Conradi and Dr. and Mrs. Conradi, as well as to the members of the Wakeham family our heartfelt sympathy. In a letter Brother Conradi says: "The blow seems hard; yet the sun shines into her room which now serves as an office attached to my ever growing prophetic library, where the Advent hope continues to grow brighter through the grief caused by the loss."

W. K. I.

We are greatly grieved to announce the death of Sister O. Zimmermann, wife of Elder H. Zimmermann at the Hague, Holland, April 26. Brother and Sister Zimmermann had been sent out by the German Mission Society to the Dutch East Indies together with Brother and Sister Dittmar, and Brother and Sister Peter Drinhaus in 1921, where they have been working with good success. All these three families had come home on their first furlough last year. Sister Zimmermann was in rather failing health and it was hoped that she would fully recuperate in the homefield before returning to Java. Unfortunately her recovery made rather slow progress so that, when Brother Zimmermann in company with Brother Drinhaus left Holland for the Dutch East Indies early in April, the condition of her health caused some concern. It appeared that an operation became necessary to which she has succumbed. Brother Zimmermann was due to arrive at Singapore May 8. We deeply sympathize with him and his only son, who has been left behind in Holland, in their bereavement. May the Lord strengthen and comfort him with the assurance of a re-union at His soon return.

Our readers will be pleased to learn that Elder H. Bauer, formerly president of the Muntenia Conference in Rumania, who had been sentenced to one year's imprisonment because of a lantern lecture delivered in our own chapel at Bucharest, has been released under the general amnesty granted to political offenders some weeks before the expiration of his term. As we understand, his imprisonment has no influence at all on his continuing in service as this general amnesty involves the abolition of the original sentence. Brother Bauer is now president of the newly organized West Muntenia Conference and he is indeed happy to return to his former place of labour.

In a letter, dated May 1, Elder A. Thomas, superintendent of the Bulgarian Mission, briefly refers to the recent earthquake that has devastated quite a large section of the country, the city of Philippopol being especially involved. So far as Brother Thomas has been able to learn none of our own people have lost their lives, though their material loss is rather considerable. Some 50 villages have been totally destroyed, while some cities have been partially demolished and have become uninhabitable. The total loss is estimated at two billion lewa. Our mission, which is incorporated as a philanthropic association, has contributed 10,000 lewa to the relief fund that is being collected by the Minister of the Interior. Some of our brethren have lost their houses. Brother Thomas was just about to make a trip through the field in order to ascertain the needs of our own people, and he believed that a special appeal

for help would have to be made to the Division. We have reason to thank God for sparing the lives of our brethren in these calamities.

Word has come to us that Brother A. Koch, formerly editor at the Hamburg Publishing House and now connected with the work in Japan for several years, has been elected field missionary secretary of the Japan Union Mission. We wish him every success in the new work that he is taking up and have full confidence that with his excellent experience in publishing lines he will be a good help in promoting the interests of this important branch of the cause.

The congress of our Federation of S. D. A. in Russia is to convene at Moscow May 12-19. This is really their quadrennial session, as the last general meeting was held in 1924. Application has been made for the visit of Brethren L. R. Conradi and W. K. Ising, but at the time of this writing it seems doubtful whether permission will be granted. We know that all our people take a great interest in our work in Soviet Russia and we pray that the Lord may give our brethren there wisdom in so relating themselves to all questions that will come up for consideration at this important gathering as will promote the best interests of the work.

In a meeting of the Division Committee held at Frankfurt/Main, April 10, it was voted to change the place of our summer meetings from Friedensau to Darmstadt, where our school provides ample facilities. It was believed that this place is more centrally located and easier of approach than Friedensau.

As this "Quarterly" goes to press some of the general brethren from abroad are beginning to arrive in Europe. We learn that Elder Evans of the Far Eastern Division has safely arrived at Naples, Italy. Elder Beddoe, associate secretary of the General Conference, has reached England, and Elder O. Montgomery, general vice-president, is due in England May 11. These brethren will be attending various union sessions and other meetings in different parts of Europe before our Summer Council convenes. We welcome them in the European Division and hope that their visit will be one of mutual profit.

Our readers, we are sure, will give thoughtful study to the list of languages given in this issue in which the Message is proclaimed, either by the printed page or by word of mouth, in the territory of the European Division. The list last published in Vol. 10, No. 2, 1924, gave 75, which number, as will be seen, has since increased to 97. There are only a few letters left to complete the alphabet. This, certainly, is a remarkable accomplishment and an evidence of the fulfilment of Rev. 14, 6.

We read in the annual address delivered by the Governor of Nigeria that of their total customs revenues amounting to £ 2,719,933, £ 240,984 were contributed to this sum by customs on cigarettes; £ 397,249 on unmanufactured tobacco, and £ 613,563 on gin, so that these three articles aggregate 46 per cent of the sum total of their revenues. The following statement of the Governor relative to these items will be of interest:

"The consumption of cigarettes has now reached a point which it might almost be thought cannot be exceeded, and yet there is no doubt that it will increase by twenty-five per cent within the next few years. Some idea of the extent of that trade can be formed when it is realized that in the port of Lagos an average sum of £ 3,000.—in duty found its way to the Treasury every week of the year. It would not have been unreasonable to assume that the cigarette habit would have affected adversely the trade in leaf tobacco, but the quantity of the latter article imported last year was well above the average and cannot but be considered to point to a state of general prosperity. The same may be said of another luxury article, gin, which in spite of the almost prohibitive rate of duty shows importations above the average."

In a letter, dated Heliopolis, Egypt, May 4, Brother C. Rieckmann, missionary field secretary for the Arabic Union Mission, writes that he was planning to go to Assuan, the terminus of the Egyptian railway in the south, the following week to train a student colporteur who is to locate there. He anticipates quite a hot climate in view of the fact that, at Cairo, they recently had 45° C in the shade. He says that the prospects for the canvassing work are better than ever. Four additional student colporteurs will enter the work in Egypt this summer.

From the accompanying report of his first itinerary through the field, which has taken him to Palestine and Syria, it is interesting to see that the canvassing work is being strengthened, though many difficulties and opposition must be met, and the work carried on in a way to meet local conditions that, in many respects, are quite different from those in the home fields. At Beyrout, Syria, he has also worked in a colporteur, selling on the first day 19 of their smaller books in Turkish, Armenian, Arabic, English, and French, in all of which languages they must carry books to suit their customers. He had to give up his plan to visit Transjordan on receiving a telegram from Brother Steffen not to come, because of the incident that had recently occurred there when two representatives of another mission were badly beaten. One of them, an Englishman, being almost killed by the Mohammedans, so that great fears were entertained by all missionaries there because of the excitement caused among the population.