

# SOUTH EUROPEAN QUARTERLY REVIEW

VOL. 6

MARCH 1934

NUMBER 1

## Progress Under Difficulties

A. V. Olson.

THE Southern European Division began its existence as a Division organization January 1, 1929, or five years ago. From a human viewpoint, these five years have not been easy ones for this field. The financial depression, which began in 1929 and soon spread out over the whole world, has rested heavily upon southern Europe, and it has been especially cruel in south eastern Europe. This unfavorable economic situation has brought many hardships and difficulties to our work. Repeated reductions in the appropriations from the General Conference and heavy exchange losses have also added to our perplexities.

During these five years, there has been constant and persistent opposition from the enemy. Tremendous efforts have been made to hinder and destroy our work. In some fields, all of our foreign workers have been forced to leave the country. In two or three countries, our people have suffered bitter persecution. At times we have had as many as one hundred chapels closed by the authorities. Some of our chapels have been wrecked, and the members dragged off to prison after being unmercifully beaten and maltreated. Decrees have been issued against our colporteur work, and our dear colporteurs have been arrested thousands of times; their books have been taken from them; they have been beaten by the mob, haled before the courts, chained together and marched from village to village by policemen or soldiers, cast into filthy prison cells, and in many other ways tormented and persecuted. Our ministers in these same countries have likewise had to carry on their work under great difficulties; their meetings have been broken

up by angry mobs, and they themselves have been stoned, beaten, arrested and imprisoned. Two years ago, one of our best and most successful ministers was laid in a martyr's grave.

Notwithstanding all hardships and hindrances, our people have pressed forward with courage and confidence in God. With love for the Master and a burden for bloodbought perishing souls, the gospel seed has been sown by laymembers, colporteurs, and workers. At times, when government decrees have been issued against us and the police have broken up our lines, prospects have been rather dark; but with faith in God the brethren have reformed their lines and moved forward. The Lord has never forsaken us. When the difficulties have been the greatest, His presence has seemed the nearest, and also the most precious.

As we look back over the past five years, our hearts fill with praise and gratitude to God for the way He has led His people in the Southern European Division, and for the way He has blessed and prospered their labors. During this five-year period, 13,958 souls were won for Christ and added to our churches by baptism and vote, which is 8,058, or 76% more than the 7,900 won in the same territory during the previous five-year period. Existing churches have increased their membership, and scores of new churches have been established. The church membership for the Division at the close of 1933 was 23,172, and the Sabbath school membership 32,248.

Although funds have been limited, missionaries have been sent out to open up the work in at least two previously unentered fields: the Seychelles Is-

lands, and the Madeira Islands. In both of these island fields, the Lord has blessed the efforts put forth. Souls have been won, and churches organized. Thus new lighthouses have been erected on these little islands far out in the Atlantic and the Indian Ocean. Colporteur work has also been started in the Azores and the Cape Verde Islands out in the Atlantic, on Sardinia in the Mediterranean, and on Reunion in the Indian Ocean.

In spite of the hard times, persecution and other hindering causes, the colporteur work has made good progress during the last five years. In many countries the sales have increased from year to year. Much of the literature sold, we know, has been destroyed by enemies of the truth, but more of it has been read, and as a result thousands of people have accepted the third angel's message. Every year, hundreds of souls are converted and added to our churches as the result of reading our publications.

At the present we have no funds for building purposes, and consequently we are unable to answer the many pressing calls that come to our Division office from far and near for help for chapels, mission homes, schools etc. The Lord has helped us, however, during the past few years to erect quite a number of chapels and other much

needed buildings both at home and out in the mission fields. Of the more important projects, we might mention a beautiful new school in Rumania, and a large church and headquarters building in Paris.

To God we give praise and gratitude for what He has done through and for His people in this far-flung field. Without His help and blessing, all human efforts would have been in vain. We also thank God for the earnest, faithful workers who are toiling in these long neglected fields, and for the many sincere, self-sacrificing members in our churches who are cheerfully giving and laboring for the speedy finishing of the work of God.

In the world, conditions are constantly growing worse. Dark, threatening clouds hang over the earth. What the morrow may bring forth, God only knows. We realize that the work will have to be finished amidst the trials and difficulties of the last days. But this must not be permitted to bring fear and discouragement into our hearts. God has promised to be with us "even unto the end", and when He is with us, all is well. Under His guiding, prospering hand, the work in the Southern European Division, and in all other parts of the world, will move forward with ever increasing power until it is finished and Jesus comes.

## Our Annual Division Council

**A**LTHOUGH three months have rolled by since the 1933 Division Winter Council convened, we feel that a short reference to the same should be made in our Division paper. The last number of the *QUARTERLY REVIEW* had just been published when the council went into session, so this is our first opportunity, through its columns, to refer briefly to that excellent meeting.

Once a year the Division committee meets in full council. This last meeting was held in Gland, Switzerland, December 12—19. These gatherings are of special importance in the harmonious development of the work. Reports from all fields and by the departmental leaders are rendered. Plans of progress for the new year are discussed and acted upon, the budget for the coming year voted, policies and other features of organization considered, etc.

The reports brought in by the leaders from the various fields were indeed cheering. We were favored in having two of the leaders of our mission fields with us, Brother M. Raspal, of the Equatorial African Mission, and M. J. Bureaud, of the Madagascar Mission. We listened with much interest to their accounts of God's leading providences in these far away lands.

We shall not here print extracts from the reports rendered by the Division president, the Divi-

sion secretary and Division treasurer, as this number of the *QUARTERLY* contains the complete statistical and financial reports for the year 1933; neither shall we quote from the encouraging reports presented by the department secretaries, as short articles are found in this issue over their signatures.

One of the most difficult tasks at the council, yet in some ways a pleasant one, was the distribution of the funds available. Owing to the mission fund shortage of the General Conference, we have received smaller appropriations from the General Conference for the last few years. When we add to this the serious depreciation in the value of the dollar during 1933, it can easily be understood that reductions in appropriations had to be made. But the brethren accepted the inevitable cut with courage and good cheer. It was felt and expressed, however, that less money must not mean less work and smaller results. We must make our efforts with smaller means more productive in soul winning. As we look to God and go forward in faith, He will give success to His servants.

To assist in balancing the budget, the French publishing house came forward and offered a liberal gift from their 1933 profits, even promising to double the size of the gift for 1934.

We were especially favored in having Elder W. A. Spicer with us during the entire council.

Besides conducting a daily morning study, Brother Spicer gave us excellent help in the discussing and solving of the various problems under consideration. Out of his rich stores of knowledge and experience, the council was greatly benefited. His stirring studies were indeed timely, inspiring and helpful. The note of courage, good cheer and confidence sounded by Elder Spicer always strengthens and grips. His review of the thrilling experiences and the many and varied providences in the history of the Advent movement, made us all feel anew a deep gratitude to God for His marvelous leadings all the way. We are convinced that this valuable instruction will bear fruitage throughout the Division in coming days.

Considerable time was given to the study of greater soul winning efforts and results. In reviewing the financial situation, it was felt that renewed emphasis should be placed upon faithfulness in tithe paying.

As we have entered upon and travelled a considerable way already along the paths of a new year, it is with a conviction in our hearts that the Lord who has been our helper hitherto, will also help and bless in the days to come. In his concluding remarks to the council, the chairman, Elder Olson, stated: "We need to seek God for special wisdom to deal with the many perplexing questions which arise. We must plan in such a way that the work will be held intact. All that God requires of us is that we do our best. We must always keep in mind that we are here to finish the work of God. So let us sound a note of cheer and courage, and let us impress upon the minds of our people that the end is very near, and may we all have a brighter, stronger spiritual experience."

May the Lord grant that 1934 will prove to be a banner year in this cause throughout all parts of our Division.

Steen Rasmussen.

### "Enlarge the Place of Thy Tent"

**W**HY must the Lord's tent be enlarged? Because "I (the Lord) will say to the north, Give up; and to the south, Keep not back: bring my sons from far, and my daughters from the ends of the earth." Isa. 43:6. From the early days of the Advent movement, the voice of the Lord has been heard around the world, and the sons and daughters of many lands have come into the fold of safety, and so the tent has had to be enlarged. This is true not only as regards large continents like Europe, Asia and America, but also in the islands of the seas. "Listen, O isles, unto me; and hearken, ye people from far." Isa. 49:1.

Though Mahé, one of the islands forming the group of the Seychelles archipelago, is just a mere speck in the waters of the Indian Ocean, yet the Lord has His sons and daughters in this place.

It was on the 11th of September 1930 that the writer with his family, accompanied by Dr. A. J. Girou, the superintendent of the Mauritius Mission, landed here. The first Sabbath school ever held in this island was composed of Brother Girou, my wife, our baby and the writer. When after a five days' stay, Brother Girou left us on the 16th of the same month, to return to Mauritius, we felt a bit lonesome in the midst of an unknown people with somewhat different manners and customs from those prevailing in Mauritius from where we had come. But we had no time for loneliness. Already the following Sabbath, the Lord had brought four of the islanders into His tent.

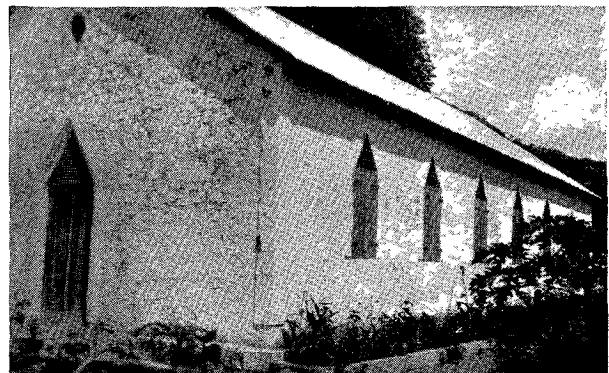
Just nine months after our arrival, twenty-one souls were baptized and a nice little church was organized. Ever since the Lord has been blessing our efforts in a wonderful way. The small Sabbath school of four members has grown up like a plant shooting forth branches, and now we have altogether 90 members enrolled in our Sabbath school. These faithful members, young and old, study the word of God most eagerly and do their best also to pass on to others of the precious truths which they have accepted.

I must add further that our members are faithful and generous in their gifts. For the year 1932 we have had a total income of Rs. 680.— in tithes and offerings. Our members also work earnestly in the missionary campaigns and joyfully take part in all church activities.

### Church Dedication on the Seychelles.

Sabbath, June 17th, will long be remembered by God's children in the Seychelles Islands, because of two services that were held that day in our church at Victoria — one a baptismal service, the other the dedication of our new church building.

We are sure that our believers around the world and especially our brethren and sisters in the Southern European Division will be much pleased to learn that the church for which they have given so generously, is now ready and has been dedicated to the Lord as above mentioned.



Our new church building at Victoria, Seychelles Islands



Believers and friends, Seychelles Islands

Early Sabbath morning, the baptismal candidates, the church members, many friends as well as a large host of curious onlookers, gathered at a place called Union Vale. After a stirring sermon by Elder Girou, 27 souls were hurried with their Lord in baptism to be raised again and to walk in the newness of life. After the baptismal service we proceeded to the church where we partook of the emblems of the bruised body and the spilt blood of our Lord.

In the afternoon at 2:30 p. m., the members reassembled in the church auditorium. After the Sabbath school was over, the hymn "The Church has one Foundation, 'Tis Jesus, Christ our Lord" marked the opening of the dedicatory service. The inspiring sermon preached by the superintendent, Elder Girou, was a clarion call to those present to reconsecrate themselves to the Lord. We all felt the presence of the Holy Spirit in our midst.

Just as the Sabbath stands as the memorial of creation, this chapel with its faithful Sabbath keepers stands as a memorial to the power of the gospel and a witness to the fact that God has precious souls everywhere to be won for His eternal kingdom.

The Seychelles is a promising field. We are of good courage. The Lord is blessing our efforts. The Saviour's statement, "Behold, I say unto you, Lift up your eyes, and look on the fields; for they are white already to harvest," is indeed applicable to our field. But it is further true that "the laborers are few." The writer is the only laborer in this island field. Brethren, "Pray ye therefore the Lord of the harvest, that He will send forth labourers into His harvest" here in the Seychelles.

L. D. Ignace.

---

"There are many places in which the voice of the minister cannot be heard, places which can be reached only by publications, — the books, papers, and tracts that are filled with the Bible truth that the people need. Our literature is to be distributed everywhere."

## Pioneers of the Message

**1933** will go down in the annals of history as a year of trouble and difficulties in our sin-sick world. For our publishing work, it has been a year of victory. Our colporteurs have fought many hard battles. In several sections of the field they have endured persecutions. In spite of all perplexities, our sales came within 480 dollars of reaching the totals for 1932. Were it not for some special difficulties during the month of December, we would undoubtedly have closed the year with a gain. But we have caught up during the first month of 1934. Our January report is showing an increase in sales of more than 3700 gold dollars over January of 1933. This is the largest gain that we have recorded for a single month in a number of years.

While thousands of business enterprises failed and went into bankruptcy during 1933, nearly all of our publishing houses in the Division closed the year with a gain; the French house heading the least with a net gain of 93,000 FFr. Several of the houses have been able to appropriate substantial amounts from their earnings, to assist in carrying on the work in the field.

In addition to the material prosperity and support given generally by our publishing houses, we particularly rejoice over the number of souls won by our colporteurs. The reports coming to us show that as a result of the distribution of the printed page, souls have been won in each field, not only in the home land, but also in mission territory, even in far-away Madagascar. In the course of three months, during the winter 1933, one colporteur in Rumania found twenty-seven interested persons, another one, nine.

Everywhere our colporteurs are pioneering the way for the message. They are visiting isolated sections not reached by the conference worker, thus opening new fields. During the past year, a colporteur entered for the first time the little republic of San Marino in central Italy. Two others went to the large island of Sardinia. In spite of the opposition from the priests and authorities, they scattered a large number of books, and interested several families in the truth. A Portuguese colporteur has done pioneer work in the Cape Verde Islands in the Atlantic Ocean.

Far out in the Indian Ocean, one of our courageous Mauritian young men has entered the island of Reunion with our literature. This island is a Catholic stronghold where no evangelical mission has as yet worked. Though the enemy has tried on three occasions to drive our colporteur out, he is still there sowing the seed of truth. Thus, with Jehovah at their head, the valiant army of bookmen in the Southern European Division is pressing the battle to the gates and conquering strong fortresses long held by the enemy.

F. Charpiot.

Statistical Report for the Southern Europ. Div. of S. D. A. for the Quarter Ending Dec. 31, 1933

Name of Conference or Mission	Number of Churches	Previous Membership	Baptism	Vote	Letter	Total Gains	Apostasy	Death	Letter	Total Losses	Net Gain	Present Membership	Ord. Ministers	Lic. Ministers	Miss. Licentiates	Other Workers	Canvassers	Total Workers	Number of Sab. Schools	Sab. School Members	Average Attendance													
1	2	3	4	5	6	7	8	9	10	11	12	13	14	15	16	17	18	19	20	21	22													
1. SOUTHERN EUROPEAN DIVISION													6	5	8	—	—	19																
2. FRANCO-BELGIAN U. C.																																		
3. Belgian Conference	11	516	11	2	21	34	2	2	22	26	8	524	3	1	2	1	—	7	15	571	447													
4. East France	16	423	—	—	4	4	10	1	2	13	—9	414	5	2	5	2	11	25	17	402	327													
5. North	12	483	17	1	2	20	11	—	3	14	6	489	3	2	10	—	13	28	14	428	308													
6. South	24	558	4	—	11	15	4	3	16	23	—8	550	6	3	3	—	13	25	30	410	380													
	63	1980	32	3	38	73	27	6	43	76	—3	1977	22	11	24	6	55	118	76	1811	1462													
7. JUGOSLAVIAN UNION CONF.																																		
8. Danube Conference	51	1186	20	4	12	36	9	3	9	21	15	1201	3	1	—	5	—	9	55	1709	1142													
9. Sava	30	525	2	3	12	17	15	1	4	20	—3	522	4	1	1	—	19	25	55	747	177													
10. Morava	19	583	21	1	—	22	5	—	10	15	7	590	3	—	3	—	18	24	27	682	590													
	100	2294	43	8	24	75	29	4	23	56	19	2313	14	3	5	5	50	77	111	3138	1909													
11. RUMANIAN UNION CONFERENCE																																		
12. West Muntanian Conference	110	3895	33	28	143	204	53	10	102	165	39	3934	11	2	5	1	20	39	108	6241	2854													
13. East	68	2074	12	8	32	52	24	6	60	90	—38	2036	9	2	2	1	12	26	68	2870	2370													
14. North Moldavian	72	2287	7	36	93	136	20	1	275	296	—160	2127	6	2	3	1	24	36	70	3100	2200													
15. South	48	1370	22	4	253	279	9	5	79	93	186	1556	8	2	1	1	16	28	55	2468	1619													
16. Transylvanian	114	3002	46	9	58	113	18	10	52	80	33	3035	11	—	2	2	23	38	131	3051	1900													
17. Banat	58	1494	22	6	58	86	11	8	55	74	12	1506	8	3	1	1	12	25	61	2020	1224													
	470	14122	142	91	637	870	135	40	623	798	72	14194	56	13	15	9	107	200	493	19750	12167													
18. SWISS UNION CONFERENCE																																		
19. German Swiss Conference	35	1412	17	3	4	24	11	1	11	23	1	1413	6	4	8	5	27	50	35	1290	960													
20. Leman	19	945	21	4	21	46	11	2	8	21	25	970	3	5	1	7	16	32	24	727	619													
	54	2357	38	7	25	70	22	3	19	44	26	2383	9	9	9	12	43	82	59	2017	1579													
21. IBERIAN UNION MISSION																																		
22. Spanish Mission	10	343	12	—	17	29	8	—	15	23	6	349	3	6	5	1	17	32	20	435	402													
23. Portuguese	6	285	5	—	23	28	2	—	28	30	—2	283	3	3	2	—	10	18	5	262	249													
	16	628	17	—	40	57	10	—	43	53	4	632	9	11	8	1	27	56	25	697	651													
24. ITALIAN UNION MISSION																																		
25. Central Italian Mission	8	165	5	—	8	13	2	—	9	11	2	167	1	3	1	—	11	16	9	178	164													
26. North	11	225	5	1	12	18	3	3	11	17	1	226	4	1	1	2	8	16	13	219	203													
27. South	10	222	1	—	2	3	1	2	1	4	—1	221	1	2	2	2	5	12	12	202	199													
	29	612	11	1	22	34	6	5	21	32	2	614	7	7	7	5	24	50	34	599	566													
28. NORTH AFRICAN UNION MISS.																																		
29. Algerian Mission	9	199	4	—	16	20	—	—	12	12	8	207	1	1	4	3	8	17	10	197	115													
30. Moroccan	3	55	—	—	2	2	1	—	2	3	—1	54	2	1	—	—	1	4	4	71	51													
	12	254	4	—	18	22	1	—	14	15	7	261	4	2	5	3	9	23	14	268	166													
31. FRENCH EQUAT. AFRIC. MISS. *)																																		
	2	96	—	—	—	—	—	1	—	1	—1	95	1	—	2	2	—	5	28	2356	2195													
32. MADAGASCAR MISSION *)																																		
	6	225	15	—	2	17	—	—	2	2	15	240	3	1	10	2	6	22	16	640	520													
33. MAURITIUS MISSION *)																																		
	8	437	27	—	—	27	—	1	—	1	26	463	2	—	12	—	1	15	38	972	629													
RECAPITULATION																																		
1. Southern European Division	63	1980	32	3	38	73	27	6	43	76	—3	1977	22	11	24	6	55	118	76	1811	1462													
2. Franco-Belgian Union Conference	100	2294	43	8	24	75	29	4	23	56	19	2313	14	3	5	5	50	77	111	3138	1909													
3. Jugoslavian	470	14122	142	91	637	870	135	40	623	798	72	14194	56	13	15	9	107	200	493	19750	12167													
4. Rumanian	54	2357	38	7	25	70	22	3	19	44	26	2383	9	9	9	12	43	82	59	2017	1579													
5. Swiss	16	628	17	—	40	57	10	—	43	53	4	632	9	11	8	1	27	56	25	697	651													
6. Iberian Union Mission	29	612	11	1	22	34	6	5	21	32	2	614	7	7	7	5	24	50	34	599	566													
7. Italian	12	254	4	—	18	22	1	—	14	15	7	261	4	2	5	3	9	23	14	268	166													
8. North African Union Mission	2	96	—	—	—	—	—	1	—	1	—1	95	1	—	2	2	—	5	28	2356	2195													
9. French Equat. African	6	225	15	—	2	17	—	—	2	2	15	240	3	1	10	2	6	22	16	640	520													
10. Madagascar	8	437	27	—	—	27	—	1	—	1	26	463	2	—	12	—	1	15	38	972	629													
11. Mauritius																																		
Totals 4th quarter 1933	760	23005	329	110	806	1245	230	60	788	1078	167	23172	133	62	105	45	322	667	894	32248	21844													
4th , 1932	740	21411	486	85	511	1082	255	59	521	835	247	21658	137	63	116	48	377	741	857	30289	22118													

\*) Report for the third quarter 1933.

## Financial Report of the Southern Europ. Division of S. D. A. for the Quarter Ending Dec. 31, 1933

Name of Conference or Mission:	Total Tithe	Total Offerings (incl. Special)	Contributions for Home Miss. Work	Contributions for Local Church Work	Colporteur Book Sales
1	2	3	4	5	6
1. SOUTHERN EUROPEAN DIVISION					
2. FRANCO-BELGIAN UNION CONF.					
3. Belgian Conference .....	F. Fr. 60,486.—	50,064.10	—.—	—.—	57,072.95
4. East France Conference .....	» Fr. 54,124.70	48,748.20	—.—	—.—	27,182.25
5. North » » .....	» Fr. 62,260.50	89,282.20	10,010.25	2,114.—	56,221.50
6. South » » .....	» Fr. 52,982.50	102,343.75	4,759.50	—.—	41,421.40
	F. Fr. 229,853.70	290,438.25	14,769.75	2,114.—	181,898.10
	\$ 9,085.10	11,479.75	583.78	83.55	7,189.64
7. JUGOSLAVIAN UNION CONF.					
8. Danube Conference .....	Dinar 70,502.40	47,061.—	—.—	—.—	33,837.—
9. Sava » .....	» 44,466.80	29,774.13	—.—	—.—	30,991.—
10. Morava » .....	» 49,771.40	38,434.25	—.—	—.—	28,044.—
	Dinar 164,740.60	115,269.38	—.—	—.—	92,872.—
	\$ 2,915.70	2,040.15	—.—	—.—	1,643.74
11. RUMANIAN UNION CONFERENCE					
12. West Muntenian Conference .....	Lei 857,497.—	367,638.75	—.—	—.—	160,952.—
13. East » .....	» 287,900.—	148,086.—	—.—	—.—	92,859.—
14. North Moldavian » .....	» 229,762.40	110,322.—	—.—	—.—	222,503.—
15. South » .....	» 177,672.—	104,608.50	—.—	—.—	92,152.—
16. Transylvanian » .....	» 331,897.70	151,485.25	—.—	—.—	135,446.—
17. Banat » .....	» 145,424.—	65,126.25	—.—	—.—	84,584.—
	Lei 2,030,153.10	947,266.75	—.—	—.—	788,496.—
	\$ 12,180.70	5,683.47	—.—	—.—	4,730.86
18. SWISS UNION CONFERENCE					
19. German Swiss Conference ..	Sw. Fr. 45,321.30	36,083.09	1,566.90	4,869.70	38,381.—
20. Lemman Conference .....	» 27,556.60	32,078.51	16,025.75	3,242.28	26,039.87
	Sw. Fr. 72,877.90	68,161.60	17,592.65	8,111.98	64,420.87
	\$ 14,151.10	13,235.26	3,416.04	1,575.14	12,508.90
21. IBERIAN UNION MISSION					
22. Spanish Mission .....	Pesetas 12,096.20	17,729.80	—.—	—.—	29,343.70
23. Portuguese Mission .....	» 8,476.50	15,170.42	—.—	—.—	5,627.20
	Pesetas 20,572.70	32,900.22	—.—	—.—	34,970.90
	\$ 2,057.20	3,290.02	—.—	—.—	3,497.08
24. ITALIAN UNION MISSION					
25. Central Italian Mission .....	Lire 8,457.90	11,852.95	330.55	24.10	17,705.10
26. North » .....	» 26,554.50	18,990.80	—.—	3,982.80	13,032.25
27. South » .....	» 5,236.80	12,611.65	56.70	—.—	6,765.60
	Lire 40,249.20	43,155.40	387.25	4,006.90	37,502.95
	\$ 2,088.70	2,239.49	20.09	207.93	1,946.17
28. NORTH AFRICAN UNION MISSION					
29. Algerian Mission .....	F. Fr. 19,333.—	48,917.78	3,838.25	838.25	31,365.50
30. Moroccan » .....	» 5,784.—	21,742.20	—.—	—.—	1,991.50
	F. Fr. 25,117.—	70,659.98	3,838.25	838.25	33,357.—
	\$ 993.—	2,792.89	151.70	33.13	1,318.45
31. FRENCH EQUATORIAL AFRICAN MISSION *)	F. Fr. 3,731.—	580.50	—.—	—.—	—.—
	\$ 147.50	22.94	—.—	—.—	—.—
32. MADAGASCAR MISSION *)	F. Fr. 10,668.50	11,393.45	—.—	—.—	4,869.45
	\$ 421.70	450.33	—.—	—.—	192.46
33. MAURITIUS MISSION *)	Rs. 3,818.30	426.60	10.57	100.28	430.88
	\$ 1,272.80	142.20	3.52	33.43	143.63

## RECAPITULATION

1. Southern European Division	\$	9,085.10	11,479.75	583.78	83.55	7,189.64
2. Franco-Belgian Union Conference	\$	2,915.70	2,040.15	—.—	—.—	1,643.74
3. Jugoslavian » »	\$	12,180.70	5,683.47	—.—	—.—	4,730.86
4. Rumanian » »	\$	14,151.10	13,235.26	3,416.04	1,575.14	12,508.90
5. Swiss » »	\$	2,057.20	3,290.02	—.—	—.—	3,497.08
6. Iberian » Mission	\$	2,088.70	2,239.49	20.09	207.93	1,946.17
7. Italian » »	\$	993.—	2,792.89	151.70	33.13	1,318.45
8. North African » »	\$	147.50	22.94	—.—	—.—	—.—
9. Fr. Equator. African Mission *)	\$	421.70	450.33	—.—	—.—	192.46
10. Madagascar » *)	\$	1,272.80	142.20	3.52	33.43	143.63
11. Mauritius » *)	\$					
TOTALS 4th quarter 1933	\$	45,313.50	41,376.50	4,175.13	1,933.18	33,170.93
» 4th » 1932	\$	48,097.07	46,617.45	2,015.58	2,660.41	33,976.36

\*) Report for the third quarter 1933.

Specification of Mission Offerings (Column No. 3)

	Sabbath School Offerings (exc. 13th Sabbath)	13th Sabbath Offering	Harvest Ingathering	Annual Offerings	Miscellaneous Offerings	Self Denial Offerings	Special Offer.		
							Big Week	Young People's Collection	(Relief Fund) Weekly Offerings
	7	8	9	10	11	12	13	14	15
1.									
2.	8,290.75	1,401.30	27,191.10	10,403.55	386.65	—	—	2,346.45	44.30
3.	6,319.85	3,666.95	31,443.80	6,996.40	—	192.00	—	50.00	79.20
4.	7,648.75	2,314.80	69,481.10	9,417.55	—	—	—	420.00	—
5.	6,783.05	3,092.40	79,197.70	11,915.20	1,000.00	—	—	355.40	—
6.	29,042.40	10,475.45	207,313.70	38,732.70	1,386.65	192.00	—	3,171.85	123.50
	1,147.92	414.05	8,194.21	1,530.94	54.81	7.58	—	125.36	4.88
7.									
8.	11,175.50	1,929.75	27,262.50	4,650.75	—	1,190.50	22.00	376.50	453.50
9.	6,337.00	1,550.50	17,315.25	3,691.00	—	396.00	5.00	220.25	259.13
10.	5,732.75	1,134.50	27,459.75	2,977.75	—	585.75	30.00	150.75	357.00
	23,245.25	4,614.75	72,037.50	11,319.50	—	2,172.25	57.00	753.50	1,069.63
	411.42	81.67	1,274.99	200.35	—	38.45	1.01	13.33	18.93
11.									
12.	111,663.75	25,814.75	127,222.00	87,126.00	—	1,735.00	5,342.50	2,035.00	6,699.75
13.	51,166.00	12,195.00	45,994.00	33,113.00	—	—	1,666.00	793.00	3,159.00
14.	45,444.50	8,605.25	40,707.00	11,539.00	—	—	1,840.00	169.00	2,017.25
15.	30,940.00	6,766.00	45,690.00	17,778.00	—	60.00	1,538.00	—	1,827.50
16.	47,602.25	10,848.50	67,649.50	20,012.50	—	140.00	3,220.00	530.00	1,482.50
17.	20,677.00	5,729.00	20,324.00	10,554.50	—	—	479.00	200.00	1,262.75
	307,502.50	69,958.50	353,586.50	180,123.00	—	1,935.00	14,085.50	3,727.00	16,348.75
	1,844.98	419.73	2,121.48	1,080.71	—	11.61	84.51	22.37	98.08
18.									
19.	5,075.00	1,117.09	17,837.95	11,310.00	270.00	—	—	290.00	183.05
20.	4,093.89	1,812.90	15,773.76	9,568.56	643.20	—	31.20	140.00	15.00
	9,168.89	2,929.99	33,611.71	20,878.56	913.20	—	31.20	430.00	198.05
	1,780.36	568.93	6,526.54	4,054.09	177.32	—	6.06	83.50	38.46
21.									
22.	2,827.45	816.30	12,583.95	1,315.85	—	110.00	76.25	—	—
23.	1,620.32	356.88	12,025.74	1,003.52	—	—	—	163.96	—
	4,447.77	1,173.18	24,609.69	2,319.37	—	110.00	76.25	163.96	—
	444.77	117.32	2,460.96	231.94	—	11.00	7.63	16.40	—
24.									
25.	1,677.15	487.25	5,940.10	2,739.75	—	605.75	—	398.45	4.50
26.	2,129.80	702.40	12,587.45	3,041.05	—	—	—	199.10	31.00
27.	1,086.80	307.25	10,336.90	660.70	—	—	—	215.00	5.00
	4,893.75	1,496.90	28,864.45	6,441.50	—	605.75	—	812.55	40.50
	253.96	77.68	1,497.89	334.26	—	31.43	—	42.17	2.10
28.									
29.	2,369.70	759.80	44,880.18	908.10	—	—	—	—	—
30.	643.65	321.30	20,125.00	652.25	—	—	—	—	—
	3,013.35	1,081.10	65,005.18	1,560.35	—	—	—	—	—
	119.11	42.73	2,569.38	61.67	—	—	—	—	—
31.									
	371.10	100.00	—	—	109.40	—	—	—	—
	14.67	3.95	—	—	4.32	—	—	—	—
32.									
	1,978.55	952.25	4,808.50	—	—	3,654.15	—	—	—
	78.20	37.64	190.06	—	—	144.43	—	—	—
33.									
	254.75	171.85	—	—	—	—	—	—	—
	84.92	57.28	—	—	—	—	—	—	—

RECAPITULATION

1.									
2.	1,147.92	414.05	8,194.21	1,530.94	54.81	7.58	—	125.36	4.88
3.	411.42	81.67	1,274.99	200.35	—	38.45	1.01	13.33	18.93
4.	1,844.98	419.73	2,121.48	1,080.71	—	11.61	84.51	22.37	98.08
5.	1,780.36	568.93	6,526.54	4,054.09	177.32	—	6.06	83.50	38.46
6.	444.77	117.32	2,460.96	231.94	—	11.00	7.63	16.40	—
7.	253.96	77.68	1,497.89	334.26	—	31.43	—	42.17	2.10
8.	119.11	42.73	2,569.38	61.67	—	—	—	—	—
9.	14.67	3.95	—	—	—	4.32	—	—	—
10.	78.20	37.64	190.06	—	—	144.43	—	—	—
11.	84.92	57.28	—	—	—	—	—	—	—
	6,180.31	1,820.98	24,835.51	7,493.96	236.45	244.50	99.21	303.13	162.45
	7,038.16	2,080.46	27,359.53	8,754.69	160.91	229.71	65.96	695.88	232.15

## Statistical Summary of the Southern European Division for the Year 1933

Name of Conference or Mission	Number of Churches	Previous Membership	Baptism	Vote	Letter	Total Gains	Apostasy	Death	Letter	Total Losses	Net Gain	Present Membership	Ord. Ministers	Lic. Ministers	Miss. Licentiates	Other Workers	Average No. of Canvassers	Total Workers	Number of Sab. Schools	Sab. School Members	Average Attendance	
1	2	3	4	5	6	7	8	9	10	11	12	13	14	15	16	17	18	19	20	21	22	
1. SOUTHERN EUROPEAN DIV.													6	5	8	—	—	19				
2. Franco-Belgian Un. Confer.	63	1915	163	15	96	274	63	23	126	212	62	1977	22	11	24	6	65	128	76	1811	1462	
3. Yugoslavian » »	100	2137	280	28	187	495	118	20	181	319	176	2313	14	3	5	5	50	77	111	3138	1909	
4. Rumanian » »	470	13199	1477	253	1367	3097	551	151	1400	2102	995	14194	56	13	15	9	106	199	493	19750	12167	
5. Swiss » »	54	2324	167	19	54	240	80	34	67	181	59	2383	9	9	12	44	83	59	2017	1579		
6. Iberian Union Mis.	16	569	85	2	57	144	15	6	60	81	63	632	9	11	8	1	30	59	25	697	651	
7. Italian » »	29	583	81	4	57	142	37	12	62	111	31	614	7	7	7	5	26	52	34	599	566	
8. North African » »	12	225	39	—	41	80	6	5	33	44	36	261	4	2	5	3	10	24	14	268	166	
9. Fr. Equatorial African Mis.	2	96	—	—	—	—	—	1	—	1	—	95	1	—	2	2	—	5	28	2356	2195	
10. Madagascar » »	6	198	51	—	6	57	4	7	4	15	42	240	3	1	10	2	9	25	16	640	520	
11. Mauritius » »	8	412	59	—	—	59	—	8	—	8	51	463	2	—	12	—	1	15	38	972	629	
Totals for the year 1933	760	21658	2402	321	1865	4588	874	267	1933	3074	1514	23172	133	62	105	45	341	686	894	32248	21844	
Totals for the year 1932	740	19925	2605	262	2006	4873	774	241	2125	3140	1733	21658	137	63	116	48	364	728	857	30289	21118	

## Activities of Our Laymen

ANOTHER year of missionary endeavor along various lines has closed. It has been a year of faithful, united effort both on the part of our courageous workers and our ever loyal lay forces. We are fully aware that the God of heaven has graciously showered His blessing upon the efforts of His devoted people, and we sincerely appreciate the true missionary spirit manifested by workers and laity in their hearty and enthusiastic co-operation which has resulted in a number of very encouraging increases in our statistical report covering various lines of missionary work.

In our Harvest Ingathering campaign over 300,000 papers in 27 different languages were used. It is safe to estimate that nearly a million people have been visited in this campaign in our Division, and many thousands have received our magazines. Besides, we definitely know of a few souls who have decided to accept the truth and to join God's remnant people as a direct result of the Harvest Ingathering campaign of 1933 in our Division. The total reached in dollars is 45,595.45. We may rightfully look upon last year's Harvest Ingathering campaign as a great victory won by the armies of the Lord in our Division. Two of our union conferences had a gain as compared to the previous year. The Franco-Belgian-Union had a gain of \$ 597.74, the Yugoslavian Union a gain of \$ 97.11. Two of our union mission fields also had a gain. The Iberian Union Mission had a gain of \$ 792.46 and North Africa closed its campaign with a gain of \$ 215.29. The total receipts of 1933 for the Division represent a decrease of \$ 916.61 as compared with 1932.

In the Big Week campaign the Franco-Belgian Union, the Iberian Union Mission, the Italian Union Mission, the French Equatorial African Mission

and the Mauritius Mission increased their receipts for 1933 above those of 1932. Other fields fell short a little so that for the Division there is a decrease for 1933 as compared with 1932 of \$ 539.81. However, we have reached the total of \$ 6,077.11, which stands as a monument of faithfulness and endurance in hard work. We wish to express our true and heartfelt appreciation to all our faithful leaders and workers, wherever stationed, and to our entire force of church officers and believers for their willing and cheerful co-operation.

There are a number of very encouraging increases in our Home Missionary report of 1933 as compared with 1932. We take first the number of souls won by our lay members. For 1932, our lay members reported 868 souls won, while for 1933 they reported 1,404, or an increase of 518. That is splendid! Think of 1,404 souls won by the laity in our Division in one year. What a fine record!

A very gratifying feature in the report is the increase in the number of persons reporting missionary work. In 1932, the number reporting stood at 12,135, while for 1933 this figure has increased to 13,350. Then consider the splendid increase in the number of Bible readings from 393,633 in 1932 to 515,887 in 1933. That is encouraging. Over half a million Bible readings in one year in our Division! That must rejoice the heart of angels. Along this line we must plan definitely to do still more. Soon the booklet on how to give Bible readings will be published in French and that will be a great help to our French-speaking constituency for this line of missionary work.

Another item which shows a fine increase is that of missionary visits. For 1932, 244,011 were reported, while for 1933 the report stands at 288,755. In the number of persons taken to Sabbath school or other services there is an increase of from 70,380 for 1932 to 84,139 for 1933.



Report of the Publishing Department of the Southern European Division  
For the Year 1933

	Average Number of Colporteurs	Number of Hours	Val. of Books in Dollars	Value of Periodicals in Dollars	Average No. of Hrs. p. week	Grand Total Value of Sales Local Currency	Grand Totals in Dollars 1933	Grand Totals in Dollars 1932
<b>1. FRANCO-BELGIAN UN. CONF.</b>								
2. Belgian Conference .....	21	14423			13.2	375,567.96 B. F.	10,558.40	10,994.43
3. East France » .....	12	9608			15.4	170,491.35 F. F.	6,738.79	8,180.76
4. North » .....	16	12919			15.5	269,265.75 »	10,642.94	11,453.35
5. South » .....	16	14136			17.0	251,545.90 »	9,942.50	11,208.83
Totals 1933 .....	65	51086	3,773.—	34,109.63	15.1	958,431.55 F. F.		
Totals 1932 .....	76	57128	6,173.35	35,664.02	14.5	1,058,553.20 »	37,882.63	41,837.37
<b>6. JUGOSLAVIAN UN. CONF.</b>								
7. Danube Conference .....	16	20915			25.1	115,076.— Din.	2,037.94	3,301.86
8. Sava » .....	17	21401			24.2	123,528.— »	2,187.49	3,542.97
9. Morava » .....	17	21800			24.7	110,920.— »	1,965.06	3,309.73
Totals 1933 .....	50	64116	4,405.30	1,785.19	24.7	349,524.— Din.		
Totals 1932 .....	65	84390	6,749.02	3,405.54	25.0	568,660.25 »	6,190.49	10,154.56
<b>10. RUMANIAN UN. CONF.</b>								
11. West Muntenian Conference	21	31659			29.0	671,158.— Lei	4,028.29	4,751.40
12. East » .....	10	12075			23.2	336,968.— »	2,022.40	2,503.18
13. North Moldavian » .....	24	38098			30.5	664,124.— »	3,985.83	2,772.91
14. South » .....	16	21178			25.5	378,929.— »	2,274.03	2,371.18
15. Transylvanian » .....	15	24418			31.3	385,419.— »	2,312.46	3,204.02
16. Banat » .....	14	19248			26.4	367,282.— »	2,204.87	2,475.32
17. School .....	6	1733			55.5	58,886.— »	353.32	—
Totals 1933 .....	106	148409	10,659.77	6,521.43	26.9	2,862,766.— Lei		
Totals 1932 .....	105	159037	10,164.42	7,913.59	29.1	3,000,972.— »	17,181.20	18,078.01
<b>18. SWISS UNION CONFERENCE.</b>								
19. German Swiss Conference ..	28	40300			27.7	151,660.— S. F.	29,452.42	29,788.47
20. Lemman » .....	16	19198			23.1	114,311.35 »	22,199.54	23,107.93
Totals 1933 .....	44	59498	11,305.87	40,346.09	26.0	265,971.35 S. F.		
Totals 1932 .....	45	55682	14,053.97	38,842.43	23.8	271,897.80 »	51,651.96	52,896.40
<b>21. IBERIAN UNION MISSION</b>								
22. Spanish Mission .....	17	20249			23.0	132,045.50 Pes.	13,269.61	6,274.62
23. Portuguese » .....	13	13349			20.0	107,227.70 Esc.	4,623.96	4,677.52
Totals 1933 .....	30	33598	17,893.57	—	21.5			
Totals 1932 .....	32	29701	10,952.14	—	17.8	178,935.90 Pes.	17,893.57	10,952.14
<b>24. ITALIAN UNION MISSION</b>								
25. Central Italian Mission ....	10	10488			20.2	60,964.70 Lire	3,163.85	1,422.88
26. North » .....	9	10399			22.2	49,467.35 »	2,567.24	2,572.50
27. South » .....	7	6775			18.6	32,694.65 »	1,696.80	1,901.27
Totals 1933 .....	26	27662	635.97	6,791.92	20.5	143,126.70 Lire		
Totals 1932 .....	22	22683	5,896.65	—	19.8	113,511.45 »	7,427.89	5,896.65
<b>28. NORTH-AFRICAN UNION MIS.</b>								
29. Algerian Mission .....	8	4879			11.7	103,158.50 F. F.	4,077.39	3,689.93
30. Moroccan » .....	2	2123			20.4	27,510.— »	1,087.34	157.48
Totals 1933 .....	10	7002	2,055.75	3,108.98	13.5	130,668.50 F. F.		
Totals 1932 .....	8	3514	2,715.85	1,131.56	8.4	97,339.75 »	5,164.73	3,847.41
<b>31. MADAGASCAR MISSION</b>								
Totals 1933 .....	9	5083	899.12	747.22	10.9	41,652.85 F. F.		
Totals 1932 .....	10	9746	705.15	1,269.90	18.7	50,969.30 »	1,664.34	1,975.05
<b>32. MAURITIUS MISSION</b>								
**Totals 1933 .....	1	82	95.63	48.—	20.5	430.88 Rs.		
*Totals 1932 .....	1	143	26.99	—	11.9	81.— »	143.63	26.99

RECAPITULATION

1. Franco-Belgian Union Conference	65	51086	3,773.—	34,109.63	15.1		37,882.63	41,837.37
2. Yugoslavian » .....	50	64116	4,405.30	1,785.19	24.7		6,190.49	10,154.56
3. Rumanian » .....	106	148409	10,659.77	6,521.43	26.9		17,181.20	18,078.01
4. Swiss » .....	44	59498	11,305.87	40,346.09	26.0		51,651.96	52,896.40
5. Iberian Union Mission .....	30	33598	17,893.57	—	21.5		17,893.57	10,952.14
6. Italian » .....	26	27662	635.97	6,791.92	20.5		7,427.89	5,896.65
7. North African Union Mission ...	10	7002	2,055.75	3,108.98	13.5		5,164.73	3,847.41
8. Madagascar Mission .....	9	5083	899.12	747.22	10.9		1,646.34	1,975.05
9. Mauritius » .....	1	82	95.63	48.—	20.5		143.63	26.99
Totals 1933 .....	341	396536	51,723.98	93,458.46	22.4		145,182.44	145,664.58
Totals 1932 .....	364	422024	57,437.54	88,227.04	22.2		145,664.58	
Gains .....				5,231.42	0.2			
Losses .....	23	25488	5,713.56				482.14	

\* This total for 1932 is for 3 months only.

\*\* This total for 1933 is for 1 month only.

**Report of the Missionary Volunteer Department of the Southern European Division**  
For the year 1933

	Franto- Belgian U. C.	Jugoslav. U. C.	Rumanian U. C.	Swiss U. C.	Iberian U. M.	Italian U. M.	N. African U. M.	Missions	Yearly Average and Totals 1933	Yearly Average and Totals 1932
Number of Societies .....	25	15	228	24	9	13	7	17	338	311
Number of Societies reporting .....	20	9	166	16	6	13	4	12	246	221
Total Membership (Including Associate and Junior Members) .....	430	580	5323	368	66	111	76	299	7253	6095
Total average attendance at Society meetings .....	351	442	2098	334	85	125	51	246	3732	3554
Number reporting .....	152	80	2699	282	50	96	22	164	3545	3057
Total of Senior and Junior young people baptized, regardless of who labored for them .....	18	3	249	26	48	7	5	29	385	395
Number baptized whom young people had a part in winning .....	9	1	42	12	—	10	—	14	88	98
Number belonging to missionary bands	11	15	1383	—	—	50	—	24	1483	1384
<b>REPORT OF MISSIONARY WORK:</b>										
Number of Bible readings or Gospel Meetings .....	1070	3197	66251	993	919	1159	604	1821	76014	64435
Number of missionary visits .....	1394	2258	40195	973	1004	936	653	1438	48851	45438
Number of persons taken to S. S. or other services .....	456	775	14408	174	196	297	57	11057	27420	14213
Number of persons given needed help	409	745	51684	458	567	190	11	1028	55092	30813
Number of treatments given .....	604	117	11365	168	113	139	42	988	13536	10135
Number of articles of clothing given to the needy .....	253	93	2123	355	72	130	—	806	3819	2128
Number of books, missionary periodicals or tracts distributed .....	14126	2892	14195	18923	10268	5266	7741	1010	74421	83739
Number of missionary letters written	511	226	3206	404	159	371	87	82	5046	4150
<b>DEVOTIONAL AND EDUCATIONAL:</b>										
Number observing the Morning Watch	68	107	1822	32	57	73	29	122	2310	1722
Number systematically reading Bible through .....	36	67	951	8	25	12	—	43	1142	451
Number taking Reading Course .....	22	8	1178	12	—	34	—	16	1270	792
No. studying for Stand. of Attainment	13	82	1977	1	16	26	—	36	2151	1625

**Report of the Home Missionary Department of the Southern European Division**  
For the year 1933

	Franto- Belgian U. C.	Jugoslav. U. C.	Rumanian U. C.	Swiss U. C.	Iberian U. M.	Italian U. M.	N. African U. M.	Missions	Totals for the Year 1933	Totals for the Year 1932
No. added to the union membership since last report as the result of missionary work of lay members .....	66	146	1082	20	19	29	—	42	1404	886
No. of churches and companies .....	63	101	499	58	15	34	12	30	812	740
Total church membership of Union .....	1,977	2,313	14,194	2,383	632	614	261	798	23,172	21,658
No. of churches and companies sending in a report .....	51	93	399	48	15	30	8	15	659	557
No. of conferences sending in a report .....	4	3	6	2	2	3	2	—	22	22
Membership of conference churches (isolated members) .....	58	202	79	39	59	103	53	115	708	366
No. of churches holding first Sabbath mission- ary service .....	14	51	301	23	8	23	3	12	435	489
No. of churches organized into working bands	25	28	208	13	8	14	3	7	306	247
How many of the following classes are operating in your union?										
Bible Training .....	8	45	224	1	—	13	—	7	298	223
Medical .....	2	21	152	1	—	—	—	—	176	107
Dorcas .....	15	18	43	13	—	7	—	2	98	82
Literature .....	5	23	175	9	—	11	—	7	230	184
Total amount of offerings during the year for local missionary work, incl. Missionary Volunteer .....	\$ 342.46	\$ —.57	\$ 487.07	\$ 840.20	\$ 66.61	\$ 118.07	\$ 65.87	\$ 6.44	\$ 1927.29	\$ 1329.15
No. of persons reporting missionary work	609	938	9,694	894	284	403	130	398	13,350	12,135
<b>REPORT OF MISSIONARY WORK:</b>										
No. of Bible readings or gospel meetings .....	7,162	56,544	419,900	6,331	6,767	7,721	2,935	8,421	515,781	393,693
No. of missionary visits .....	8,198	27,159	225,521	5,895	6,741	6,109	2,521	6,611	288,755	244,011
No. of persons taken to S. S. or other services	1,491	4,942	72,914	644	1,706	1,366	356	720	84,139	70,380
No. of persons given needed help .....	3,997	12,106	210,609	2,926	4,037	1,732	111	2,279	237,797	145,446
No. of treatments given .....	1,829	722	57,390	1,123	1,200	1,937	2,308	1,319	67,828	53,896
No. of articles of clothing given to the needy	3,790	1,267	10,221	2,068	903	1,044	34	640	19,967	14,693
No. of books, missionary periodicals, or tracts distributed .....	60,400	21,371	72,455	83,898	88,538	19,071	25,512	3,905	375,150	338,735
No. of missionary letters written .....	5,861	3,178	9,052	2,307	999	1,411	400	377	23,585	16,306

Financial Summary of the Southern European Division for the Year 1933

Name of Conference or Mission	1	2	3	4	5	6	7	8	9	10	11	12	13	14	15
	Total Tithes	Total Offerings (incl. Special)	Contributions for Home Miss. Work	Contributions for Local Church Work	Colporteur Book Sales	Sab. School Offerings (exc. 13th Sabbath)	13th Sabbath Offering	Harvest Ingathering	Annual Offerings	Miscellaneous Offerings	Self Denial Week	Big Week	Young People's Collection	Weekly Offerings	
1. SOUTHERN EUROPEAN DIVISION															
2. Franco-Belgian Union Conference	\$ 36,872.80	\$ 31,540.93	888.40	361.82	37,882.63	4,621.05	1,746.85	19,598.58	1,720.13	76.12	1,391.70	1,996.86	369.74	19.90	
3. Jugoslavian	\$ 10,374.60	\$ 4,910.20	—	—	6,190.49	1,544.66	301.71	1,740.06	207.90	—	684.37	287.43	58.21	75.86	
4. Rumanian	\$ 39,767.70	\$ 16,097.96	220.28	342.98	17,131.20	7,690.16	1,665.81	3,353.81	1,231.39	—	1,373.64	250.63	119.80	412.72	
5. Swiss	\$ 52,734.90	\$ 30,341.16	7,093.18	17,611.46	51,651.96	7,618.86	2,083.88	10,834.89	4,064.—	597.31	2,823.17	2,002.71	478.09	168.25	
6. Iberian Union Mission	\$ 6,895.60	\$ 6,712.24	—	—	17,893.87	1,621.68	399.94	3,433.28	232.09	15.73	424.60	549.22	35.70	—	
7. Italian	\$ 5,946.50	\$ 5,753.31	144.12	294.47	7,427.89	1,036.41	304.45	2,919.49	343.07	—	501.15	556.50	81.01	11.23	
8. North African Union Mission	\$ 4,018.—	\$ 3,795.87	569.30	74.17	5,164.73	455.38	130.77	2,685.80	64.24	—	220.46	230.22	8.70	—	
9. Fr. Equat. African Mission	\$ 598.70	\$ 320.55	—	—	—	93.27	3.95	—	102.95	—	87.32	10.57	—	—	
10. Madagascar	\$ 1,599.90	\$ 1,197.44	—	—	1,646.34	286.69	120.34	462.61	86.96	—	144.43	96.41	—	—	
11. Mauritius	\$ 4,999.60	\$ 1,651.69	23.59	184.67	143.63	450.50	210.25	566.93	143.46	9.14	184.85	86.56	—	—	
TOTALS FOR THE YEAR 1933	\$ 163,808.30	\$ 102,321.05	8,938.87	18,869.57	145,182.44	25,418.66	6,937.95	45,595.45	8,196.19	720.79	7,535.69	6,077.11	1,151.25	687.96	
TOTALS FOR THE YEAR 1932	\$ 173,353.17	\$ 108,040.90	6,099.16	8,408.96	145,664.85	26,518.51	7,785.42	46,512.06	9,452.31	483.11	8,016.32	6,616.92	1,750.95	905.30	

Then comes our welfare work with increases in every item. The number of persons given needed help in 1932 was 145,446, while the number for 1933 had increased to 237,797. The number of treatments given has increased from 53,896 in 1932 to 67,828 in 1933, and articles of clothing given to the needy have increased from 14,693 to 19,967.

Then we are very happy to take note of the increase in our literature ministry and of missionary correspondence. The number of books, periodicals or tracts distributed in 1932 was 338,735, while for 1933 the number was 375,150. The missionary letters written in 1932 numbered 16,306 and in 1933 they have increased to 23,585.

Another item to which we wish to call special attention is the number of churches organized into working bands. In 1932, according to the report, 247 churches were thus organized, while in 1933 their number had reached 306. We are glad for this increase, but we are not satisfied for we believe that a missionary band organization should be established in every church. But we are thankful to our heavenly Father for all that has been achieved in the past through His blessing, and we look into the future with courage, believing that wonderful victories are in store for God's people during 1934.

D. N. Wall.

Special Dates 1934

Christian Home Day	February 3
Missionary Volunteer Week	March 10 — 17
Big Week	April 7 — 14
Week of Sacrifice Offering	June 2
Educational Day	August 4
Harvest Ingathering Campaign	August 1 — December 1
Colporteur Day	October 6
Sabbath School Rally Day	Every 13th Sabbath
Week of Prayer	December 1 — 8

CONTENTS

Progress Under Difficulties, A. V. Olson
Our Annual Division Council, S. R.
"Enlarge the Place of Thy Tent", L. D. Ignace
Activities of our Laymen, D. N. Wall
Pioneers of the Message, F. Charpiot
A Father and Prince in Israel Fallen, S. R.

SOUTHERN EUROPEAN QUARTERLY REVIEW

Organ of the Southern European Division of Seventh-day Adventists published every quarter by

DURRENMATT-EGGER, BERNE

Subscription prices:

France	4 frs.
Other countries	6 frs.

Address of Editor (to whom all manuscripts should be sent):  
Höheweg 17, Berne, Switzerland.

STEEN RASMUSSEN ..... Editor

## A Father and Prince in Israel Fallen

ON Thursday, February 1, a telegram was received at Division headquarters from Skodsborg, Denmark, briefly stating that our well-known and highly esteemed fellow worker, Elder J. C. Raft, had passed away. The message came rather unexpectedly. While Brother Raft had had a severe attack of heart trouble about a year ago, he had gained considerably in strength of late. He seemed almost in his usual health when a new and sudden weakening of the heart in a few moments ended his life.

Brother Raft was born on the island of Lolland, Denmark, August 8, 1863. Already as a child he felt the working of God's Spirit upon his heart and in childhood he had a great longing to know the Saviour. As a young man of nineteen he left Denmark for America where he spent eleven years. Shortly after his arrival in the United States he accepted the message and was baptized by Elder O. A. Olsen.

Following his conversion, he felt a great longing to obtain a preparation for gospel and soul winning work and later enrolled as a student of the Danish-Norwegian department at Union College, Nebraska. Then in the year 1893, he accepted an invitation from the General Conference to return to Europe and take up evangelistic work in Denmark, and together with his devoted wife who faithfully stood by his side, he had the joy of reaping rich harvests of souls. The Lord truly blessed their self-sacrificing efforts through their more than 37 years of married life.

As the work grew, larger and heavier responsibilities were placed upon the strong shoulders of Elder Raft. Thus he was for several years president of the Danish Conference and for 14 years president of the Scandinavian Union. In 1922 he was invited to connect with the European Division as Field Secretary. He served in this capacity until 1928 when the European Division was reorganized and the four Divisions created. From 1928—1932 he was connected with the Southern European Division as Field Secretary and secretary of the Ministerial Association until he retired from active service at the end of 1932, when together with his family he moved to Skodsborg, Denmark. As president also of the "Scandinavian Philanthropic Society" for twenty years, and of the "Société Philanthropique de la Lignière" for several years, Brother Raft rendered most valuable service in fostering and developing



J. C. RAFT

our medical work. While the major part of his life was spent in the northern lands of Europe, yet not only there did he place his indelible stamp upon the work, but all through Europe and Africa his influence has been strongly felt.

Elder Raft was a strong and well-balanced leader, an excellent counsellor and true friend. He was a man of sterling character, simple in his ways, but with a keen sense of truth and justice, which he sought to exercise in all of his relations to others. He was blessed with the best gifts of leadership; he was farsighted, a splendid organizer, a good financier, aggressive yet safely conservative. He was firm and steady in times of crises, calm and trustful. On every post of duty and in every responsibility, whether large or small, he gave of his very best.

He was a warm and sympathetic friend of the youth, and few have done more than Elder Raft in Europe to encourage, to inspire and to help educate and train young men for gospel service. He lived, labored and died as a true evangelist, shepherd and apostle in the church of God, and with him a pioneer father and a prince in Israel has fallen. His unshakable faith in God, his untiring zeal and the inspiration of his life and example will long live in the memory of thousands. For more than 50 years Brother Raft was a member of the denomination, and during a period

of 40 years he gave of his best to the Master as a worker and leader. His passing is a great sorrow to us all. We render gratitude to God for his beautiful and inspirational life. He will be greatly missed.

The funeral services were held February 6th in the chapel and gymnasium of the Skodsborg Sanitarium where a very large congregation of fellow-laborers, church members and friends had gathered to pay their last tribute to a fallen comrade, father, friend and fellow worker. After a short sermon and a brief life sketch by the writer, Elder M. M. Olsen, one of our veteran ministers in Denmark, and Doctor Carl Ottosen, the medical superintendent of the sanitarium, spoke feelingly and most appreciatingly of Brother Raft's beautiful family life, of his faith, courage and many achievements. Interment took place at the Vedbaek cemetery, not far from the sanitarium. A. Wasli, chaplain of the Skodsborg Sanitarium, officiated at the grave.

Elder Raft leaves to mourn his wife, to whom his sudden death was a heart-breaking experience, yet Sister Raft bore up remarkably well during these trying days. The Lord surely sustained her and her son Jacob and strengthened them both in their great sorrow. There is also left to mourn a daughter, Mrs. Ingeborg Raft-Henriksen, married to H. L. Henriksen, secretary-treasurer and publishing house manager of the Madagascar Mission. With their three children, the Henriksen family left for Madagascar less than a year ago. The sacrifice thus made by both the Raft and the Henriksen families in their advanced age, in thus giving of their best to the needy mission fields, has been a real inspiration to other fathers and mothers in Europe who also are asked to place their sons and daughters upon the altar of missions. Then there is, as already mentioned, a son, Jacob, who is pursuing medical studies at the Copenhagen university, and other near relatives.

Concerning Elder Raft it can truthfully be said, "Blessed are the dead which die in the Lord from henceforth: Yea, saith the Spirit, that they may rest from their labours; and their works do follow them." We are comforted in the thought that our brother sleeps in Jesus and that soon the Life-Giver shall call him forth to everlasting life. We express to all members of the bereaved and sorrowing family our sincerest and deepest sympathy.

Steen Rasmussen.