

“Our God is Able”

By L. F. OSWALD

I AM at present in Tallinna, Esthonia, where a wonderfully good church convention is in progress. News has just come through from the Division office to the effect that we have reached our goal in the Ingathering Campaign. We do, indeed, rejoice over this wonderful victory. As we look back over the past year, we realize that God has done much for us. Comparing the results of this year's campaign, \$92,489.65, with the last, \$69,756.91, we find that there is an increase of almost \$23,000. Unusual efforts have been put forth by all our workers and lay-members, both young and old, to make the 1929 campaign the best ever held in our territory. We are living in an unusual time, and surely we can expect God to do unusual things for us.

Appalling conditions and hardships have had to be met in the various fields. In Poland our people are not allowed to sell, nor give away papers. Some were arrested while engaged in the campaign. Financial conditions in Great Britain have caused widespread unemployment. Still, our people went courageously forward, and, with the Lord's help, have done more than ever before. There is no crisis with God!

I have been much encouraged throughout the campaign with that wonderful text in Matthew 19:26: “But Jesus beheld them, and said unto

them, With men this is impossible; but with God all things are possible.

One of the reasons for this wonderful success is the fact that it has been the most spiritual campaign ever held in our territory. Reports from our brethren and sisters in all parts of the field testify to this.

We send our hearty thanks to all conference workers, lay-members, young people, and workers in our institutions, for their splendid co-operation not only in the Harvest Ingathering Campaign, but also in the Big Week. Are we satisfied with past achievements? No! Let us carry on the good work this year also. May our past

records encourage us to do still greater things for the advancement of the Lord's work in our territory, and throughout the whole world.



Confirming the Souls of the Disciples

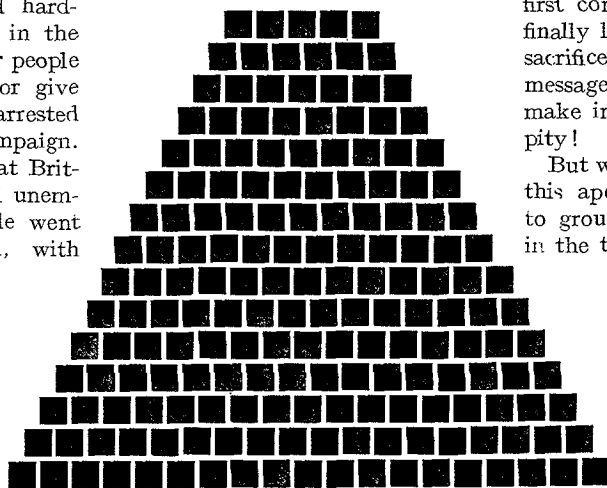
BY J. H. SCHILLING

THE question that has greatly stirred us of late and has called forth long and earnest articles in our periodicals is this: What can be done to “confirm the souls,” of our dear brethren and sisters in the churches, so that they will remain firm in the truth unto the end? It is really lamentable and heart-breaking to see so many dear souls, who were fervent and happy in the message when they were first converted, growing cold, and finally leaving the truth. What a sacrifice they made to accept the message, and what a sacrifice they make in leaving it again! What a pity!

But what can be done to prevent this apostasy? What can we do to ground our people more firmly in the truth? What can we do to tie them more firmly to the cause of God? These are very pertinent questions and should not be left unanswered.

In the first place we should obey and strictly carry out the commission of Christ to His apostles by carefully instructing

OUR ATTAINMENT \$92,489



OUR GOAL, \$90,000.

our converts *before* and *after* baptism. The commission of Christ is: "Go ye therefore, and teach all nations, baptizing them in the name of the Father, and of the Son, and of the Holy Ghost: teaching them to observe all things whatsoever I have commanded you." As indicated above, Christ's command to His apostles was that they should teach the newly-converted all that the Lord had taught, before they were baptized; and then after baptism, should continue to teach them to observe all things that the Lord had commanded.

This, I am very sorry to write, we are not carrying out very carefully. After baptism we often leave the new believers alone too early. We hurry our evangelists off to some other place of labour without having established the newly-born in the new life. We take the shepherd away and let the sheep fight the wolves alone. If greater wisdom were used in the transfer of workers to new places, we are sure that many apostasies could be avoided.

One fact is irrefutably true, and that is, that we evangelists do not work and pray for our people after baptism as much or as earnestly as we did before they were baptized. When souls manifest an interest, we walk, run, work, and pray untiringly for and with them, hoping to win them fully over. After they have been won and baptized we feel that our work is accomplished and we at once begin to slacken our pace, while, in fact, our work has only just begun. It takes as much earnest effort to keep the souls as to win them. This fact we have not yet fully comprehended. That is the way it seems, at least, and the sooner we understand it the more successful we shall be in holding our people.

The apostle Paul understood this and worked accordingly. He paid great attention to the churches he had raised up. When he and his companions had preached the Gospel in several cities and had raised up a church in each place, he visited them again "confirming the souls of the disciples," "exhorting them to continue in the faith," assuring them that they

would have to enter the kingdom of God "through much tribulation." While he stayed a short time in Miletus, he sent to Ephesus and called the elders of the church and had a meeting with them, partly to exhort them to perform their office faithfully, and also to inform them of what was coming, so that they might be ready to withstand the apostatizing influences and stand fast and immovable in the faith.

The apostle Paul was not only anxious to win souls for Christ, but just as anxious to keep them steadfast in the faith after he had brought them into the church. Judging by appearances it does sometimes seem that while we are just as anxious to win souls as he was, we are not quite so anxious to keep them. We never put forth the same strenuous efforts to keep our people as we do to get them. Is that not true, or am I wrong? Would I were wrong! Brethren, however the facts of the case may be, let us do all that lies in our power, all that our inventive minds can discover and plan to mould, fashion, fortify our churches and individual members in such a way as to keep them for ever strong and firm.

Let us as ministers, evangelists, and pastors carry a heavier burden, that is, feel the burden more keenly than we ever did before, to lead our people into a deeper Christian life, where they have been really "enlightened," where they have "tasted the heavenly gift," where they have been made "partakers of the Holy Ghost," and where they have tasted "the good Word of God and the power of the world to come." If we, in all our efforts of soul winning, strive to reach this depth, this height of spiritual life in all whom we lead to Christ, then I believe we shall lose fewer souls. Let us teach our people how to pray, how to bear testimony for Christ, how to be obedient to God, before we bury them with Christ in baptism.



Gideon's Band

BY C. E. WEAKS

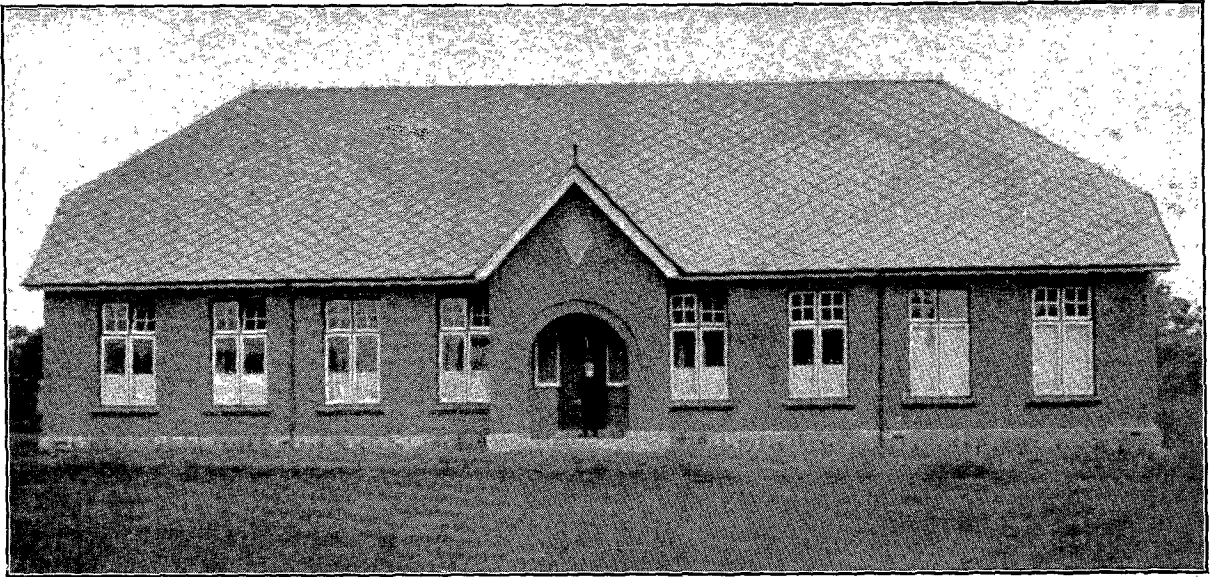
"GIDEON'S Band" seems a fitting title to choose for reporting the work of our colporteurs in the

Northern European Division for the year 1929, for there was an average of 302 colporteurs at work in our field throughout the past year—just two more in number than composed that victorious army of Gideon's so many years ago. And ours was a victorious army, too. While the unprecedented cold weather of February and March reduced our sales over the same months of 1928 by about \$9,000, this loss was soon made up during the following months, and we closed the year with a gain over 1928 of \$11,073.81. These 302 faithful workers reported sales to the value of \$282,970.70, or an average of \$937 per worker. Only the day of final reckoning will reveal the large amount of good accomplished by this noble band of 302 house-to-house literature evangelists.

During the past few weeks large colporteur institutes have been held in Denmark, Norway, Sweden, Finland, and England. It has been my privilege to attend many institutes since my first one twenty-nine years ago, but never have I attended more inspiring ones than those which it has been my privilege to attend this winter. As the colporteurs related their wonderful experiences of God's overruling providence in their work, we realized anew that the day of miracles has not passed. A new chapter to the book of Acts is being written to-day in the experiences of our colporteurs. It is good in these days of uncertainties in the world about us, when men's hearts are failing them for fear because of what is coming on the earth, to be connected with a work that will not, cannot fail. Some of our very best work to-day is being done in fields where economic conditions are so bad that it takes about one-half the average weekly wage of a man to purchase one of our larger books. Yet these are the books which are being sold in that very territory.

The sum of \$282,970.70 represents only the work of our regular reporting colporteurs. It is yet too early to give final figures of the entire output of our several publishing houses in this Division. But we know that our churchmem-

(Continued on page 9.)



Offices of the British Union Conference.

News from Our Union Presidents

The British Union—A Retrospect

BY W. H. MEREDITH

IT is with a little concern that we write this brief report to the ADVENT SURVEY. First, because we are passing through a very trying experience. The industrial condition of a large part of our field is making it very difficult for our conferences to keep within their income, this being particularly true of the year that has just closed. Second, the outlook for 1930 is not too promising.

In the southern part of our territory, however, it has not been quite the same. There they have at least been able to hold their own, and show some little gains in both tithes and offerings. Wales and Ireland also were able to show some progress in this respect, but the finances were in such a condition last year that they were only just able to balance. Furthermore the budgets for the year 1930 have been cut so badly that the workers will have to strain every nerve to reach success.

Scotland ran behind both in tithes and in offerings, but the outlook for that part of the field is a little better this year than last, so that as we look forward to the future it is only with hope and

with confidence in God that we can plan and work for the success we would like to see.

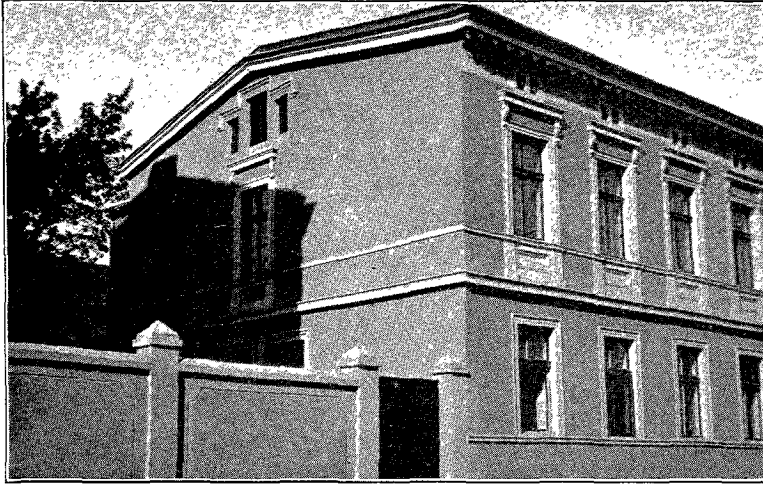
We are glad to be able to report a net gain in our membership for the year 1929 of seventy-two, and for the whole field some slight increases in tithes and offerings. There is one thing that we are all proud of, and that is the loyalty of our people throughout the field in the Harvest Ingathering Campaign. With a real struggle we have reached the £8,000 mark, this being nearly £800 more than the year before. When we remember that this money is collected from people who are passing through a real industrial crisis and taken largely in pence, by our churchmembers, it is certainly something to be proud of. We could not have reached this goal, however, without strenuous efforts on the part of all our workers, throughout the field. Not only do they encourage our churchmembers, but they also go out and gather large sums of money, some of them spending weeks in ardent work for this campaign. Only by such vigorous efforts were we able to accomplish so much.

In our outlook for the year 1930 we are hopeful that the evangelistic efforts that are being planned

will bring in a large number of souls. At the time of writing we are able to welcome one of the evangelists sent to us from America. Brother Johnston has already arrived and is locating in Bolton, Lancashire. From all I can learn he is of good courage as he views the situation there, and if we can supply him with the necessary budget he has every hope of making good success. We welcome this new worker to our field and pray that God will give him abundant success, even as He has done in his former field.

We have also heard that Brother Roy Anderson, recommended to us from Australia, has accepted the call and will soon be on his way to this field. From what we learn of Brother Roy Anderson he, too, will be a valuable asset to our work here, and we trust that the best possible plans will be laid for the work of these new brethren that they may meet with the best of success.

With all our difficulties and with our curtailed finances we have hope in God, and we pray that He Himself may give to the workers in this field His own abundant grace and help that better success may come this year than ever before.



Headquarters of the Polish Union.

Encouraging Word from the Baltic Union

BY T. T. BABIENCO

WE are very glad to be able to report progress in all departments of our Union during 1929. The Lord has indeed been with us. We are thankful for our heavenly Father's protecting care over the health of all our workers, and for the rich blessing He has bestowed upon our efforts to spread the message. It seems that during 1929 more strenuous efforts have been made than ever before. Not only have our evangelists and Bibleworkers been taking an active part in conducting efforts, but the presidents and secretaries are also leading out in series of meetings and are devoting every moment they can find apart from the executive work in endeavouring to win souls for Christ. Thus, more meetings have been held than at any other time in the Union. For the past four months the writer has been running two series of meetings, one in the German language and one in Russian. All our meetings are well attended. During the early days of the effort more than 130 names and addresses were handed in. These inquirers are being cared for and we are praying that the Lord will give us a rich harvest of souls when the meetings close.

The year 1929 closed with a membership of 4,028, which is a net gain of 260. There was an increase of \$2,661 in tithes, \$2,495 in Harvest Ingathering, and \$941 in Big Week, as well as an advance

in other offerings. Colporteur sales have increased by \$5,808. For all these things we give thanks to Him, whose work it is, the God of the impossible.



Success in Spite of Difficulties

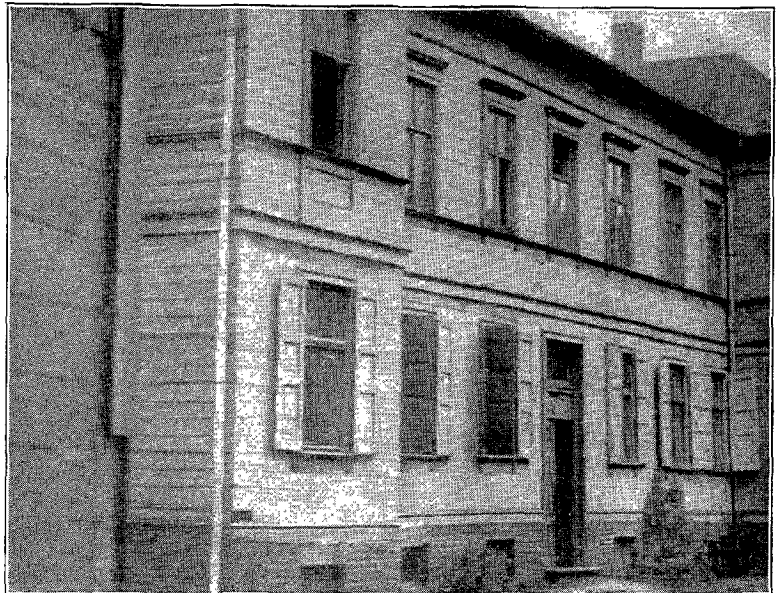
BY J. ISAAC

THE year 1929 has been one of progress in every department of the Polish Union. For this we are very grateful to our heavenly Father. Although the conditions under which the work has to be done in this field are forbidding, the Lord has greatly blessed the

workers and churches in their efforts to win souls for Christ, and has also given a liberal increase in the sale of our literature, as well as in tithes and offerings.

The hand of persecution has been active in different parts of the field, resulting in the imprisonment of several members, some for a term of one year, and in the loss of property by fire, which was the deliberate act of enemies. But these things do not discourage our people. We see that in our activities as the remnant church we are passing through the experiences of the churches in the days of the apostles. We read in the Word: "But call to remembrance the former days, in which, after ye were enlightened, ye endured a great conflict of sufferings; partly, being made a gazing stock both by reproaches and afflictions; and partly becoming partakers with them that were so used. For ye both had compassion on them that were in bonds, and took joyfully the spoiling of your possessions, knowing that ye have for yourselves a better possession and an abiding one."

During 1929, 318 members were baptized. A sad feature in the work is that some apostatized for one reason or another, so that our net gain for the year was 198. Our people are faithful and are working hard in the missionary efforts that are being put forth through-



Headquarters of the Baltic Union.

Statistical Report of the Northern European

		Tithe	Tithe (weekly per capita)	Total Offerings (Columns 29-35)	Sabbath-School Offerings 12 Sabbaths	18th Sabbath Offerings	Weekly Offerings	Harvest Ingathering Offering	
									25
Baltic Union									
Estonian Conference	1	E. Kr.	8580 14	0 45	12255 89	1454 32	396 97	87 44	8909 66
Riga	2	Ls	19553 16	1 10	8142 50	1165 53	322 19	4060 50
Courland	3	Ls	8010 58	0 82	6856 17	733 63	168 07	4729 55
Livonia	4	Ls	6337 91	0 69	7091 55	720 32	181 27	4839 47
Lithuania	5	Lt	3800 90	1 40	5406 94	616 18	179 80	4194 75
Total		Ls	40680 70	0 78	41790 89	4940 70	1228 24	120 66	28058 17
		\$	7860 90	0 15	8076 21	954 78	237 36	23 32	5422 36
British Union									
South England Conference	1	£	255 7 0	2 5	2854 1 3	449 12 3	171 4 8	1842 6 7
North England	2	£	3391 0 10	1 9	1868 17 9	252 13 10	77 5 6	1408 1 5
Welsh Mission	3	£	1768 5 1	1 11	565 18 1	64 16 11	25 2 2	435 0 6
Scottish	4	£	508 2 3	1 7	324 1 4	48 4 3	11 4 2	249 16 7
Irish	5	£	303 6 10	2 10	179 10 4	38 13 3	19 10 0	101 5 7
Total		£	6460 10 11	2 2½	5792 8 9	854 0 6	304 6 6	4036 10 8
		\$	31460 30	0 53	28209 17	4159 10	1482 06	19657 92
Polish Union									
Posanian Conference	1	Zl.	2260 98	1 84	640 25	1574 06	612 98	225 10	4709 51
Silesian	2	Zl.	8586 29	1 63	8876 76	2858 49	539 22	542 20	11467 94
Central Polish Conference	3	Zl.	16940 77	1 87	17587 97	1212 34	233 11	253 63	6886 41
East Polish	4	Zl.	5709 87	0 77	9067 44	1324 46	297 89	116 40	4920 63
North Polish Mission	5	Zl.	6161 34	0 81	2228 64	629 32	96 51	26 51	1425 16
Total		Zl.	42080 72	1 42	45562 03	7503 67	1779 71	1163 84	29849 90
		\$	4766 94	0 15	5160 13	849 84	201 57	131 81	3980 68
Scandinavian Union									
Danish Conference	1	S. Kr.	754 68	1 51	40656 89	7157 98	3129 86	257 70	18003 97
Norwegian	2	D. Kr.	57312 52	1 31	39907 93	6692 58	2146 64	55 68	21077 36
North Swedish Conference	3	N. Kr.	42888 91	1 01	18311 63	2620 56	1329 99	19 25	11393 61
South	4	S. Kr.	14819 13	1 49	17448 21	2780 81	890 03	2 75	9740 09
Swedish in Finland Conference	5	F. Mk.	15153 12	16 79	50341 55	4864 15	2938 05	29645 75
Finnish Conference	6	F. Mk.	70660 50	8 95	97923 75	16646 60	4726 15	48842 85
Total		S. Kr.	145992 76	1 30	129377 34	21109 78	8176 38	383 37	67210 98
		\$	39275 19	0 35	34810 38	5622 48	2199 94	89 71	18083 82
Totals for Unions 4th Quarter, 1929									
		\$	83368 34	0 33	76255 91	11586 21	4120 93	244 84	46544 77
East African Union Mission									
Kenya	1	£	43 11 8	2½	6 12 6	5 2 2	1 2 4	19 8 0
West Tanganyika	2	£	222 15 0	5½	264 7 9	191 18 5	51 7 6	19 1 10
East Tanganyika	3	£	91 7 6	7½	52 2 10	24 4 0	11 16 9	5 6 7
Uganda	4	£	44 11 8	2½	37 5 3	26 17 7	9 14 9	12 11
		£	10 9 2	7½	12 17 4	4 4 5	2 13 6
Total		£	412 15 0	3	373 5 8	252 6 7	76 14 10	25 9 4
		\$	2010 00	0 06	1817 89	1228 84	373 73	124 02
Ethiopian Union Mission									
Central Abyssinia	1	£	39 0 0	6½	11 4 1	9 4 11	1 2 2	17 0
Eastern	2	£	8 18 4	1 6½	7 10 8	1 13 6	4 2	18 0
Western	3	£
Eritrea	4	£	15 1 8	5½	2 11 6	1 2 2	1 9 4
Total		£	63 0 0	6½	21 6 3	12 0 7	2 15 8	1 15 0
		\$	306 80	0 13	103 78	58 58	13 55	8 52
West African Missions									
Sierra Leone	1	£	44 5 0	3½	2 16 0	9 13 6	3 2 6
Gold Coast	2	£
Nigeria	3	£	86 16 8	2½	53 7 1	30 18 4	7 12 9
Total		£	131 1 8	2	66 3 1	40 11 10	10 15 3
		\$	638 40	0 04	322 17	197 68	52 41
Iceland-Faroes Missions									
Iceland	1	Ice. Kr.	4925 70	1 06	2165 58	800 15	140 00	1225 48
Faroes	2	D. Kr.	268 30	0 07	147 44	87 44	30 00	30 00
Total		\$	1022 90	0 22	517 86	200 53	89 39	8 04	259 90
Totals for Missions 3rd Quarter, 1929									
		\$	3978 10	0 07	2761 70	1635 63	479 08	16 56	393 92
Grand Totals 4th Quarter, 1929									
		\$	87341 24	0 28	79017 61	13271 84	4609 01	261 40	48938 69
" " 3rd " 1929		\$	82202 30	0 25	64972 98	12898 36	4830 79	288 75	40939 79
" " 2nd " 1929		\$	81210 30	0 27	25527 58	12921 84	4819 78	288 27	373 21
" " 1st " 1929		\$	74541 40	0 25	25205 39	11600 37	4692 17	413 13	4187 96

*No report.

Division for the Quarter Ended December 31, 1929

Annual Offerings	Miscellaneous Offerings	Week of Sacrifice	Big Week Missions Extension Fund	Total Offerings (Columns 29-36 and Big Week)	Total Offerings Weekly per capita	Percentage of Offerings to Title	Special Offerings for Foreign Fields	Total Contributions for Home Missionary Work	Total Contributions for Local Church Work	Colporteur Sales	
33	34	35	36	37	38	39	40	41	42	43	
1434 50	28 00	5 00	12255 89	0 64	142 9%	112 25	3089 77	6192 69	1
2531 28	53 00	10 00	8142 50	0 77	64 8%	233 12	8511 79	3659 00	2
1260 92	4886 17	0 70	85 9%	102 50	3573 93	10446 00	3
1350 49	7091 55	0 78	111 8%	10 72	776 88	9723 00	4
416 21	5406 94	1 99	142 2%	5 65	571 97	3470 40	5
7334 58	91 64	16 90	41790 89	0 80	102 7%	1504 12	17335 39	31676 59	
1417 39	17 71	3 29	8076 21	0 15	97 32	3346 60	6598 42	
857 1 10	23 0 2	10 15 9	3 3 0	2857 4 3	2 0	34 2%	630 3 3	2211 10 10	1
105 14 4	18 6 5	6 16 3	1868 17 9	1 11	106 3%	2 9 10	194 6 7	2916 10 8	2
35 2 9	2 8 7	3 7 2	565 18 1	2 1	101 3%	2 10	39 14 1	473 14 11	3
14 16 4	324 1 4	1 8	103 8%	1 2 8	3 17 9	158 5 8	4
19 5 11	15 7	179 10 4	2 0	73 4%	130 18 4	113 11 11	5
532 1 2	44 10 9	20 19 2	3 3 0	5793 11 9	2 0	89 7%	3 15 4	1049 0 0	5872 14 0	
2591 12	216 89	102 07	15 34	28224 51	0 49	18 34	5108 63	28600 04	
1679 57	75 54	640 25	
2074 06	106 06	3876 76	1 91	103 8%	223 17	1110 28	4493 95	1
681 95	17587 97	1 69	103 8%	1161 83	3200 24	8629 30	2
432 99	68 60	9067 44	2 50	153 9%	218 93	338 48	5275 80	3
93 28	52 86	7165 97	0 78	116 3%	376 59	17 09	4917 25	4
4961 85	303 06	2223 64	0 56	91 6%	20 80	141 71	2216 40	5
562 16	34 07	45562 03	1 56	108 2%	2001 32	4807 80	25172 63	
11548 89	341 49	217 00	36 05	5160 13	0 16	224 11	538 33	2818 83	
9646 24	220 48	69 90	854 14	40892 94	1 14	75 7%	2410 73	2406 74	21649 50	1
2620 56	129 46	98 00	40782 07	1 23	95 7%	189 04	2525 00	34623 35	2
3657 53	367 00	10 00	39 25	18211 63	1 24	122 8%	2711 14	2947 03	16510 23	3
12843 60	200 00	17487 46	1 73	115 4%	4643 63	1316 50	17765 00	4
26534 35	823 80	400 00	8451 00	50541 55	12 11	72 1%	578 95	13774 10	131058 50	6
30956 24	1131 10	429 49	1727 87	106374 75	6 23	75 3%	
8337 17	361 68	115 53	494 89	131105 21	1 16	89 8%	9999 35	10842 80	87352 15	
12907 86	630 36	220 94	460 22	35275 27	0 31	2687 99	2314 73	23481 76	
.....	2 0 0	7 10 0	6 12 6	65 0 0	
2	10 15 4	16 2	271 17 9	2 3	122 0%	196 8 0	1
.....	3 7 3	52 19 0	3	57 9%	2
.....	5 19 5	40 13 6	2	91 0%	237 4 6	3
2	12 17 4	8 3	123 3%	4
0 04	18 14 9	11 13 5	384 19 1	3	93 2%	498 12 6	
.....	91 26	56 83	1374 72	0 06	2429 45	
.....	4 15 0	11 4 1	1 1/2	28 7%	1
.....	7 10 8	1 3	84 5%	2
.....	2 11 6	1 3/4	17 0%	3
.....	4 15 0	21 6 3	2	33 8%	4
.....	23 13	103 73	0 04	
.....	12 16 0	1	28 9%	1
8 3	14 7 9	53 7 1	1 1/2	61 4%	14 1 8	3
8 3	2
2 01	14 7 9	68 3 1	1	50 4%	14 1 8	
.....	70 07	322 17	0 02	68 58	
.....	191 00	2356 58	0 06	54 8%	14338 59	1
.....	147 44	0 29	55 0%	2
.....	43 04	560 90	0 12	54 8%	3161 48	
2 05	181 46	99 87	2861 57	0 05	71 9%	5659 51	
12909 91	630 36	405 40	580 09	79597 70	0 16	91 1%	3027 76	11908 34	67158 61	
101 50	494 57	5369 22	714 95	65717 93	0 21	83 8%	28 00	1768 19	5670 76	33997 96	
119 39	1199 61	5805 48	8637 97	34215 55	0 11	42 1%	2420 81	6055 67	72968 48	
2889 89	1005 73	316 42	354 42	25564 85	0 08	34 2%	3 90	2269 73	7355 51	58345 65	

†Includes 2nd Quarter

Home Missionary Report for Fourth Quarter, 1929

	Baltic Union	British Union	Polish Union	Scandinavian Union	Faroes Mission	Totals 4th Quarter, 1929	Totals 4th Quarter, 1928	Increase
Church Membership.....	4028	4545	2478	8645	19676	18881	795
No. Reporting	2255	1187	1465	1958	6863	4703	2160
Per Cent of Members Reporting	56%	26%	59%	23%	35%	25%	10%
Missionary Activities								
Missionary Visits	22415	5365	8919	5209	50	41958	22405	19553
Bible Readings	11258	1375	15960	4495	35	33123	19685	13438
Hours of Christian Help Work	10958	17484	1192	4307	33941	22734	11207
Treatments Given	2227	788	511	828	170	4524	3671	853
Periodicals Distributed	27902	75783	4465	87578	1100	196828	177798	19030
Tracts Distributed.....	7487	29975	258	10489	55	48264	39877	8387
New Subscriptions to Periodicals	302	303	7	1940	8	1960	2022	62
Books Distributed.....	2034	4904	106	1634	17	8695	9370	875
Missionary Letters Written.....	1813	4894	275	2027	9009	4926	4083
Missionary Letters Received	1040	1521	175	994	3730	2558	1172
SOULS WON	18	10	11	20	59	66	7

||Decrease

Success in Spite of Difficulties

(Continued from page 5.)

went from village to village for over two weeks, selling the Harvest Ingathering papers so that they might reach their goal before returning home.

In many places the work is greatly hindered by the obstacles that are in the way. We are not permitted to secure halls for public efforts, so our workers must go quietly from house to house. Some have been in prison and the lives of others have been threatened. The colporteurs, who are going to every house and hovel throughout the land with the message-filled literature, are in constant danger of falling into the hands of the ruthless officials. In one place the colporteur may be able to secure a written permission to sell our literature, but when he comes to another place the authorities will neither acknowledge nor accept that statement, and the colporteur is treated like an evil-doer. Repeatedly the people have been stirred up, which is easily done, and the colporteur has been in danger of violence from the mob. Two colporteurs were beaten on one occasion, and locked up overnight in a bare shed, where they suffered severely from cold. Our lay-members undergo similar treatment at times while engaged in missionary work. They have been maltreated, beaten, and stoned. But the work is being carried on in the best way

possible, and the Lord is adding to the church such as should be saved.

Our great need is more workers. Because of this we cannot answer many of the calls. Our hope for workers is largely in our mission school. Very good work has been done during the three years that the school has been running, and a number of the students are already in active service in the conferences. This year thirty-one have enrolled, and we are looking

for new recruits each year. The school is making good progress. A boys' dormitory and a greenhouse have been added, as well as other improvements made. Almost all the work has been done by the students. The colporteur work is a prominent feature of the school.

Although we wish we could report many more souls won to Christ, yet, when we consider the existing circumstances and the experiences that the workers and the

Our Native Work in Heathen

NAME OF CONFERENCE OR MISSION	Ordained Ministers	Licensed Ministers	Licensed Missionaries	Teachers	Colporteurs	Other Workers	Total	Number in Baptismal Class	Train. Sch.	
									Number of	Enrolment
1	2	3	4	5	6	7	8	9	10	11
East African Union Mission										
Kenya	4	1	289	8	42	344	1117	2	32
West Tanganyika.....	54	54	325
East Tanganyika.....	20	12	7	39	256	1	24
Uganda	6	3	2	1	12	24
Totals	4	7	366	22	50	449	1722	3	56
Ethiopian Union Mission										
Central Abyssinia.....	1	9	1	...	11	3
Eastern Abyssinia	1	1	4
Western Abyssinia	2	2
Eritrea	4	4
Totals	1	16	1	...	18	7
West African Missions										
Sierra Leone	1	5	10	10	26	122	1	20
Gold Coast	1	...	12	13	...	1	70
Nigeria	4	4	22	30	209	1	29
Totals	2	9	26	32	69	351	3	119
Totals for 3rd Quarter, 1929	3	13	33	382	23	82	536	2050	6	175
Totals for 2nd " 1929	3	14	32	396	3	64	510	2805	6	194

||No report. §Two schools closed.

Missionary Volunteer Report for Fourth Quarter, 1929

	Baltic Union	British Union	Polish Union	Scandinavian Union	Totals 4th Quarter, 1929	Totals 4th Quarter, 1928	Increase
No. of Societies	56	67	44	58	225	208	17
Total Membership	861	1444	654	1459	4418	4137	281
Number reporting	560	537	323	251	1691	1205	486
Per Cent of Members Reporting	55%	39%	49%	17%	38%	29%	9%
Financial							
Offerings for African Fund		\$ 199 43	\$ 80 38	\$ 250 55	\$ 480 37		
Harvest Ingathering, etc., raised	\$1723 37	2609 73		3901 26	8234 36		
Missionary Activities							
Missionary Visits	6458	1698	3000	724	11880	5549	6331
Bible Readings	3737	254	4943	680	96 4	3349	6265
Hours of Christian Help Work	5683	8964	129	686	15412	12641	2771
No. of Treatments Given	693	168	163	47	1071	988	83
Magazines Distributed	999 7	28594	673	8561	47321	36128	11693
Tracts Distributed	1672	13011	31	707	15721	12300	3091
New Subscriptions to Periodicals	92	135	1	74	302	807	4505
Books Distributed	696	1928	11	180	2815	2449	366
Missionary Letters Written	803	895	106	669	2473	2029	444
Missionary Letters Received	519	800	67	240	1626	1008	618
SOULS WON	18	3	10	9	40	25	15

†Decrease

churches have had, we rejoice and thank God that we are counted worthy to work and suffer with Christ, and that our labours have not been in vain. We trust that the Lord will increase our numbers as the days go by until the work shall be finished.

It will be interesting to note the very definite advancement revealed by the following figures:

Churches	1929	1928
Membership	108	98
Number baptized	2458	2260
S.S. Offerings	318	312
Big Week	\$ 3847	\$ 3317
Week of Sacrifice	902	650
Harvest Ingathering	750	419
Other Offerings to missions	4226	2267
Home missionary and church work	1395	897
Colporteur book sales	2279	1028
Tithe	10515	9095
	17512	15022

Gideon's Band

(Continued from page 2.)

bers have not been idle. They have sold thousands of our smaller books, magazines, papers, and tracts. We hope that when our reports are all in we will find that our sales have been at least \$400,000.

We have been happy to see our colporteur work definitely organized in the East African Union Mission during the past year. Brother Cuthbert, an experienced director of one of the mission fields of that Union, was released from his local work to lead out in the publishing department in that large field. God has abundantly blessed him, and to-day we have a group of native colporteurs carrying the message in printed form to the homes of the people. Steps are being taken to start colporteur work in our West African mission fields and in Abyssinia.

So we face the new year with faith and courage, believing that God has still better things in store for us in 1930.



THE superintendent of the Ethiopian Union sends word that they are now printing the Sabbath-school lessons in Amharic for the first time. They are also printing a two-thousand edition of *Steps to Christ* in this language.

Africa, Third Quarter, 1929

tationSch		Out-Schools		Girls' Sch.		Med. Miss W		European Tithe	Native Tithe	Per cent of Native to European Tithe
Number of	Enrolment	Number of	Enrolment	Number	Enrolment	No. Per. giving Treatments	No. Treatments given			
12	13	14	15	16	17	18	19	20	21	22
3	255	270	9810	2	51	17	7150	£ 43 11 8		
2	50	§16	87	7	6540	56 18 4	165 16 8	291 3%
1	145	1	17	2	500	60 14 2	30 13 4	50 5%
1	13	2	23	2	2500	16 11 8	28 0 0	168 8%
								5 10 0	4 19 2	90 2%
7	453	288	9825	3	69	28	16690	£183 5 10	229 9 2	125 2%
								\$ 892 53	1117 47	
2	42	1	4	1	7	6	3891	£ 35 5 0	3 15 0	10 6%
1	20	2	338	7 18 4	1 0 0	12 6%
1	6 13 4	8 8 4	126 4%
4	62	1	4	1	7	8	4229	£ 49 16 8	13 3 4	26 4%
								\$ 242 65	64 15	
...	23	850	£ 12 4 0	32 1 0	262 6%
1	20	2	900			
2	137	1	39	11	823	26 7 6	60 9 2	229 1%
3	157	1	39			36	2573	£ 38 11 6	92 10 2	239 7%
								\$ 187 89	450 51	
14	632	290	9808	4	78	72	8492	£271 14 0	385 2 8	123 3%
								\$ 1323 07	1632 13	
3	1318	301	11410	5	105	65	10353	\$ 1364 97	1657 23	121 4%

WITH OUR MISSIONARIES

Visiting Our West African Missions—The Journey (*Continued*)

By W. E. READ

IN the last number of the ADVENT SURVEY our readers followed us through the storm until we had passed the Bay of Biscay. Soon after, the clouds dispersed and the sun made its appearance. What a welcome change this made to everything!

We had bidden good-bye to the frost and wintry weather of the

north and could now feel the soft breezes coming from warmer climes. The sight of land was a very welcome picture, indeed, after the many days of tossing on the angry deep. Our first port of call was Las Palmas in the Canary Islands, and we stopped also at Teneriffe in the same group.

This was a pleasant diversion. Several of the passengers went ashore, but as it was the Sabbath we remained quietly on board and spent the time in study and meditation. Quite a good deal of cargo was discharged at both these ports and this, together with the taking on of new supplies of coal, occupied the best part of two days. The cargo carried on these steamers is very mixed. Besides the usual merchandise, such as foodstuffs and household goods, there are hundreds of monkeys which are being transported from India to Nigeria. Then again there are thousands of cases of gin being carried to various West African ports. More than one chief has requested that the importation of this "firewater" be prohibited, but still it goes on. It is really a sad thing to think of



Travelling difficulties in West Tanganyika. G. A. Ellingworth's car crossing a river with assistance.

what men will do if only they can make money. Here on this steamer are the messengers of the cross who carry salvation to the natives of Africa, and yet on the same boat is this accursed liquor which makes the African mad and drives him away from contact with the only means of help and deliverance. It was very aptly put by an African not so long ago when he said to a European, "You bring your God in a little black book, but you also bring your devil in a little black bottle." What wonderful progress might be seen in this great continent to-day if only the example of the European generally had been more in harmony with that of the missionary of the Gospel. Yet notwithstanding all these handicaps the results seen are remarkable.

Just sixteen days after leaving the shores of England we came within sight of the city of Freetown. This is the port of entry to Sierra Leone. By this time it was quite warm and it seemed good to revel in the sunshine once again. Soon after we dropped anchor we could see our brethren making their way from the shore

in a small boat. It was good to greet Brother Gronert, the superintendent of the field, and also Brother Berglund, who has charge of the training school. These brethren helped us with our luggage and it was not long before we were in Freetown making arrangements for the journey to Waterloo, the headquarters of

our work in this colony.

Freetown is a typical West African city. There are, of course, many good European buildings, but on the other hand there are the usual native structures. On several of the streets can be seen women sitting on the ground and in front of them baskets of oranges which they have for sale. Others have tapioca, nuts, or little calabashes of grain. Then in front of the shipping offices can be seen numbers of native boys waiting to be engaged for different kinds of work on the steamers which journey down the coast. The shipping firms are very glad of the services of these boys, as they are much cheaper than European labour and they are better able to stand the heat of the tropics. Mostly they handle the cargo and do the heavy work, especially when the ship is at the various ports.

After suitable arrangements had been made for our baggage we started on our journey to Waterloo. This we made by automobile, and it was about one hour's ride. What a wealth of vegetation there is in this part of Africa! Lining the road from Freetown to Water-

loo are to be seen orange and mango trees in abundance. There are also palm trees of various kinds, including those which bear nuts and those from which palm wine is made. Here also are banana trees, pawpaws, and bamboos, as well as smaller tropical bushes like the castor oil plant and others. Stretching before you are fields of tapioca and sweet potatoes, as well as large areas on which nuts are grown. Then what a profusion of blossom greets the eye! Most of the flowers are large and very pretty. In the main they grow on the larger trees. They are of the most magnificent colours, and in the brilliant sunshine are a blaze of glory. All too soon we reached Waterloo where we were welcomed by the wives of the faithful missionaries. Ere long our camp-beds were put up, and after some needed refreshment we were glad to seek repose. The next day was the Sabbath and we were pleased to meet once again with our African workers and believers.



Wanted—Those Missing Links

BY S. G. MAXWELL

ENGLISH statesmen have long dreamed of a Cape to Cairo railway. It is still a dream. However, travellers by means of rail, steamer, and motor-car can now make the journey from south to north Africa.

Some Adventists also visualize the day when there will be an Adventist Cape to Cairo route, a chain of missions stretching the length of the Dark Continent.

Our brethren in South Africa have now pushed far up into Central Africa and there are stations



Girls' School, Ntusu, in course of erection. Miss L. Clarke is taking charge.

from Cape Town to Northern Rhodesia and the Belgian Congo. In North Africa there is the Egyptian Mission. The vast territory in between belongs to the Northern European Division, who have the task of uniting these present links into one long chain. From Cairo to Northern Rhodesia is 3,000 miles.

The central links of this chain have now been in position for many years. They are our missions in East Africa. But we are slow in uniting the whole chain together. The two great gaps are in Southern Tanganyika and the Anglo-Egyptian Sudan. A few years ago we lengthened the chain when Uganda was entered. But from our station there to Egypt there are unentered fields for a distance of 2,000 miles.

As a Union we are especially interested in Tanganyika. Here is a gap of 600 miles without an Adventist missionary. For twenty-seven years we have concentrated our work in only two of the twenty-one districts. These fields were formerly known as the Pare and Mwanza Missions. However, with visions of something larger being accomplished in the near future, their names were changed to the East and West Tanganyika Missions.

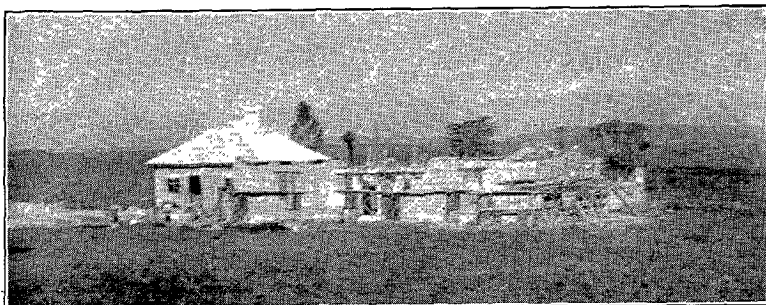
Tanganyika Territory is a vast block of country with an area of

350,000 square miles. The greater portion remains to be entered with the message. In this unentered area lives one of the largest tribes in the territory—the Wanyamwezi people. They have long been regarded as one of the best characterized tribes. Strong physically, they have earned the reputation of being exceptional carriers. They live in the Tabora district, which occupies the centre of Tanganyika. A mission planted among them would yield good results. It would link up with our present work among the Wasukuma people, 200 miles further north. It would be an important step towards bridging the large gap in our mission work towards the south. With two other stations in the Ufipa and Tukuyu areas we could join hands with our brethren in Northern Rhodesia.

Then if the Sudan could also be entered, we would soon read of a General Conference president doing the Cape to Cairo route through the long chain of Adventist missions stretching the length of the Dark Continent.



No gift could be imparted that equalled in value the gift of the Son of God, and every other gift that men receive, is an outflowing from this measureless gift. Eternity itself will not exhaust the treasure of the gift of God to the world.—*Ellen G. White.*



Children's home, Nakuru.

The Advent Survey

Organ of

The Northern European Division of the
General Conference of S.D.A.

Editor: Ella M. Eastcott

Published monthly on the 25th day of
the month. Price 2/6 per annum. Sub-
scriptions to be sent to your local Pub-
lishing House.

FROM THE OFFICE WINDOW

Vol. 2. No. 3.

March, 1930

THE Soviet war on religion continues. All foreign missionaries are to be expelled from Russia. The receipt of money or literature from foreign religious bodies is forbidden. "Church bells," it is said, "will soon be stilled in Russia." In 1928, 354 Christian churches were closed and in 1929, 1,200. Of these 551 were closed during the last two months of the year. The plan is that by 1935 no building shall be left in the length or breadth of Russia in which religionists may assemble for public worship. Workers in factories have been obliged to sign a declaration of hatred of God under penalty of losing their bread, clothing, and lodging tickets. The terrible results of any efforts of opposition to these decrees is well known.

NATURALLY you will be looking for the annual reports in this issue, as well as those of the fourth quarter of 1929. We have decided, however, not to burden you with so many pages of figures, but to print the annual statistics with the reports of the institutions in the April number of the SURVEY.

It is a pity that for some reason or other the president's report of the Scandinavian Union is not to hand. Mail bags seem to have been doing exploits recently, but we hope this write-up will find its way here for the next issue.

WE were very sad to learn of the fate which has befallen our publishing house in Seoul. This has been completely destroyed by fire. Let us remember our brethren there at this time.

WE have so many good things for this number, and it would be disappointing to leave anything out, so the remainder of this page is given over to general articles.



41 Manor Gardens, Edgware, Middlesex, England.

Transportation Notes

MR. AND MRS. C. A. BOYKIN, of the United States, arrived in England by the s.s. "Olympic" on January 11th and spent a few days in London before leaving for India on the s.s. "Rawalpindi." They will connect with the publishing work there.

MISS H. J. DAVIES, Associate Medical Secretary of the African Division, left for the United States by the s.s. "American Merchant," to take up further studies in medicine.

MR. AND MRS. C. H. MACKETT, and their son Walter, returned to India on the s.s. "Naldera," leaving Marseilles on January 17th.

MISS L. DELHOVE left Antwerp on January 22nd on the s.s. "Watussi" to connect with the work in Belgian Congo. Her parents are already there.

MR. AND MRS. F. MUDERSPACH, and their little daughter, left England on the s.s. "Usambaru," returning to their work in Tanganyika Territory. They have been spending their furlough in Denmark.

MR. F. MARSH, of the Stanborough Press, left for the United States on the s.s. "Aquitania."
C. H. ANSCOMBE.

Bringing in the Sheaves

BY A. LUEDTKE

WITH the help of the Lord we have finished our Harvest Ingathering Campaign. Our first goal we surpassed, for our brethren and sisters did good work and were blessed in their efforts. But the greatest success is in finding through this means honest souls, who hear and follow the message. Definite results are already seen in two churches, where four and two people respectively have been won for the Lord. This was the fruitage of work done by but a few members. If all had worked as faithfully, what results there would have been! Where to-day two or three take hold of the truth, there could be twenty or thirty. The Lord will give them to us. He will help us if we only let Him use us. He says to each one of us, "Go, work *to-day*, in my vineyard." The sincere help of every member is needed. The Spirit of God has already gone before us; we need only to gather the fruit. From various parts of our large field come calls for workers and requests for visits. Unseen and unnoticed the faithful colporteurs have been sowing the seed and now others can go in and reap the harvest.

There is a good prospect of a large harvest of souls. The workers are of good courage and the churchmembers are helping. The lack of suitable places in which to hold meetings still gives us much concern; we certainly need the means to solve this question.



"A WISE man has well reminded us that in any controversy the instant we feel anger, we have already ceased striving for the truth, and have begun striving for ourselves."

**Our next big effort is for Big Week, which is close upon us.
Let us pray and work for big results.**