

The Advent Survey

Organ of the
NORTHERN EUROPEAN
DIVISION
of the General Conference of
SEVENTH-DAY
ADVENTISTS

Itinerating in Nigeria

By W. E. READ

ON January 16th Elder Christian and the writer arrived at Lagos, in Nigeria. Here we were met by W. McClements, superintendent of the Nigerian mission field. After a brief period of counsel we journeyed to the north by train. There is an excellent railway service in the country, and we were able to go the distance of 704 miles from Lagos to Kano in 42 hours. The trains are well appointed, having excellent sleeping accommodation and also splendid facilities in the matter of meals.

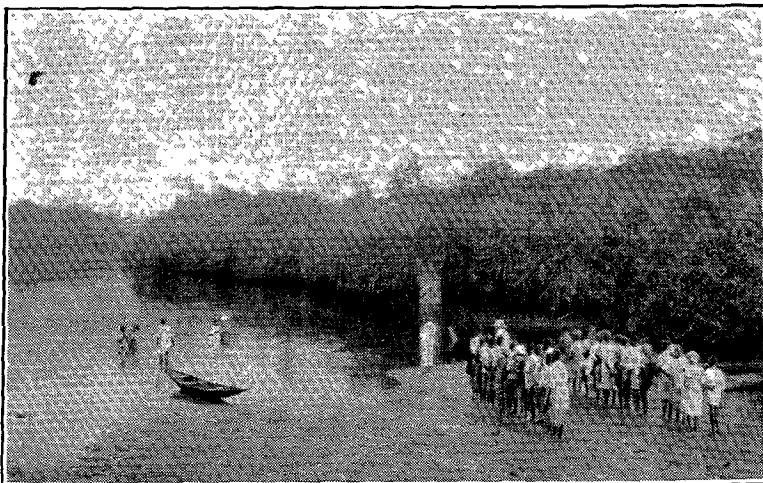
Nigeria is a country of many tribes of people, and it was particularly interesting to notice the different kinds of villages which could be seen from the railway line. The houses varied; sometimes they were of mud, sometimes of stone. As we journeyed north we saw villages surrounded by mud walls and the entrances to the houses more protected than in the south. Pagans inhabit the southern part of the country, while as one gets into the northern territory one is surrounded quite largely by Moslem believers.

From the coast northward for nearly 200 miles there is a dense forest belt. Then this gradually thins out until there are broad expanses of grass land. Still further north, and over the boundary of Nigeria into French territory, one meets with large areas of sandy desert.

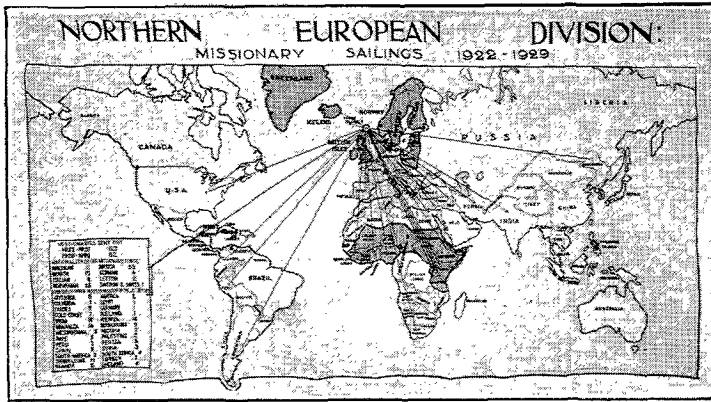
On arriving at Kano we made arrangements immediately for transportation to the north and east. We were fortunate in that a good Syrian family placed a motor-lorry at our disposal, and it was not long before we were on our way northward to Zinder. Zinder is in the French Military Territory of the Niger and is the centre of a very large population. We were well received by the French

officials and they did everything possible to make our brief stay comfortable and profitable. With their recommendation we went out some distance from Zinder to a village called Meerie. Here the chief gave us a splendid reception and pleaded with us to open up work amongst his people. There is a large population in this part of French territory and there are splendid prospects for strong, active missionary endeavour. After a brief visit we returned to Kano and, in order to save time, travelled rather late in the night. About 11 o'clock we came to a place called Doura not far from the Nigerian boundary. We ran into the gateway of the village and there parked the motor-lorry, cleared out all our baggage, put our mattresses down on the floor of the car, and were very soon soundly asleep. After a brief stay we resumed our journey and were soon back at Kano again.

After very little delay we started on our journey eastward. We had in mind to visit the territory around Lake Chad, This neigh-



Baptismal scene in Abua at the time of the camp meeting in Southern Nigeria.



(See note on last page)

lutely unentered with the Gospel message. This is an astounding fact, especially when one thinks of the many, many years of missionary effort. It is surely time for the loud cry to come and we should plead with the Lord for a mighty outpouring of His Spirit that the message of the Saviour's advent may soon be carried to all these millions of people.

This is a country of great need and we trust that our believers in the homeland will remember Brother McClements and his missionary associates in service, as well as our splendid group of African workers, at the throne of grace continually. They have a large task on hand, but with the help of God the walls of Jericho, which they face, will fall down before the advance of a triumphant faith and confidence in God.



God Loves Us All Alike

BY L. H. CHRISTIAN

THE Gospel is for the whole human family. It belongs to one nation, or one country, or one individual, just as much as to another. There is no difference with the Lord. Every human being to Him is a precious treasure. His heart of love yearns to save them all, whether they be rich or poor, white or coloured. We make a difference. We keep the most workers in the homeland and spend the larger share of our tithes and mission funds on ourselves and our country people. But that is not God's plan. If we catch His ideal, we will have a burning passion to save the lost in the darker sections of earth.

We must think of the unentered

fields. There are yet vast districts in that part of Africa which belong to the Northern European Division which have not been entered. We travelled last winter for hundreds and hundreds of miles through districts larger than half of Europe, where as yet there is not a single missionary. We have men ready to go into these needy and promising West African fields. We should at once begin not merely one, but several mission stations in the French Cameroons, in the Upper Volta, in the French Guinea or Sudan. Men are ready to go, but we lack the money. The Thirteenth Sabbath Offering this quarter goes to the Northern Division for East and West Africa. The purpose of it is to open up new work and new fields. We have been very grateful for the large Thirteenth Sabbath Offerings which have been given to other parts of the world. We hope and pray that the offering this quarter will be especially liberal.

Pictures

BY WINNIE D. CLIFFORD

How sweet and fair the radiant morn! From the mountain heights we hail the dawn, and in our hearts we breathe a prayer to Him Who made the morn so fair. How like the mighty sea below! The mists of dawn are hov'ring low, with here and there a mountain peak, like jagged sea-rocks—so to speak, dark'ning the silver of the sea, those billowy clouds, majestic, free. The morning skies are azure blue, while Afric's highest mount, in view, crown'd with eternal snow, now glistens in the sun-rise glow. The sight is worth a mint of gold? Nay more! the mere thought leaves us cold. The gold of Ophir cannot buy such pictures as now meet the eye. The Master Artist paints, and lo! the art of ages cannot show, in mirrored halls and galleries, rare priceless treasures such as these.

When cares are pressing heavily, and thoughts of home tug secretly; when hands are wearied and the feet have measured off' the daily beat; some baffling problems wrack the brain, some disappointment tends to strain and stress the seeming loneliness, which often one will not confess. How nice! we think, if for one day, from Mission cares our minds could stray, and find refreshment once again in visiting across the main. What would we give, we often say, for jollity which comes their way, as round the hearth the home-folk sit, regaling all with mirth and wit.



Group of workers in the Aba district in South-eastern Nigeria.

Statistical Report of the Northern European Division for the Quarter Ended March 31, 1930

NAME OF CONFERENCE OR MISSION	No. of Churches	Membership of previous report	GAINS					LOSSES					Total losses	Net gain	Present Membership	Ordained Ministers	Licensed Ministers	Missy's Credentials	Other Workers	Colporteurs	Total Workers	No. Sabbath-Schools	Membership	Average Attendance		
			By baptism	By vote	By letter from foreign fields	By let. from other fields in Union	Total gains	By apostasy	By death	By letter to America	By letter to other foreign fields	By letter to other fields in Union														
1	2	3	4	5	6	7	8	9	10	11	12	13	14	15	16	17	18	19	20	21	22	23	24	25		
Northern European Division																										
Baltic Union																										
Estonian Conference	7	21	1,474	5	1	...	6	12	2	14	-8	1,466	5	3	5	2	16	31	31	1,507	1,130	1	
Riga	2	8	883	40	...	7	47	5	4	13	34	917	2	...	6	1	7	16	8	839	605	2	
Courland	3	18	761	9	1	2	3	15	9	1	...	4	14	1	762	2	2	4	...	13	21	19	865	551	3	
Livonia	4	22	701	9	...	4	13	8	3	7	18	-5	696	3	2	6	...	9	20	32	835	595	4	
Lithuanian	5	11	209	1	...	3	4	-4	205	3	3	1	2	...	9	11	223	173	5	
	80	4,028	63	2	2	14	81	35	10	3	15	63	18	4,046	18	12	24	5	45	104	101	4,269	3,054			
British Union																										
North England Conference	6	28	2,189	8	7	2	10	27	8	5	...	7	7	27	...	2,189	7	4	11	3	37	72	48	2,236	1,789	6
South England	7	25	1,512	6	4	...	7	17	10	12	...	12	34	-17	1,495	10	7	8	3	32	60	50	1,562	1,227	7	
Welsh Mission	3	7	402	7	5	...	3	15	2	4	...	1	8	15	...	402	4	...	5	14	15	...	428	373	8	
Scottish	9	4	299	1	2	...	5	2	10	-10	289	2	1	4	...	7	8	...	255	175	9	
Irish	10	3	143	2	2	...	1	...	3	-3	140	2	1	...	4	9	5	...	141	117	10	
	67	4,545	21	16	2	20	59	21	25	14	29	89	-30	4,515	40	13	33	9	78	173	126	4,602	3,681			
Polish Union																										
Central Polish Conference	11	15	272	1	1	1	1	...	10	12	-11	261	1	1	4	1	13	20	15	...	287	186	11	
East Polish	12	37	706	...	3	...	213	216	3	3	...	168	177	39	745	3	1	3	2	13	22	59	801	666	12	
Posanian Conference	13	17	362	5	5	7	2	...	2	2	13	-8	354	3	1	7	1	12	24	21	311	275	13	
Silesian	14	27	814	56	3	...	21	80	11	2	...	16	29	51	865	1	3	10	1	15	30	54	1,027	921	14	
North Polish Mission	15	7	304	3	3	1	1	...	209	211	-208	96	1	...	2	...	3	6	19	...	353	332	15	
South Polish	16	8	161	161	2	...	9	2	13	148	148	2	...	3	...	2	7	16	
	111	2,458	65	6	395	466	25	9	12	2	407	455	11	2,469	14	6	30	7	58	115	168	2,779	2,379			
Scandinavian Union																										
Danish Conference	17	50	2,706	13	1	...	14	9	18	2	2	19	50	-36	2,670	10	2	11	2	22	47	75	2,601	1,999	17	
South Norwegian Conf.	18	34	1,825	3	2	1	8	14	16	1	...	3	15	35	-21	1,804	6	1	7	1	17	32	37	1,579	1,283	18
North Norwegian	19	19	704	5	...	2	7	3	4	...	8	15	-8	696	2	2	3	3	5	15	25	...	603	486	19	
North Swedish	20	26	1,092	1	2	4	7	9	3	...	3	8	23	-16	1,076	5	...	4	1	12	22	34	935	865	20	
South Swedish	21	22	598	13	1	...	15	29	9	6	2	5	22	7	805	2	1	8	2	8	21	26	690	552	21	
Swedish in Finland Conf.	22	10	321	1	...	2	3	12	2	...	1	...	15	-12	309	2	1	1	3	8	17	...	212	182	22	
Finnish Conference	23	20	1,199	13	3	1	...	1	18	-18	1,181	4	2	5	2	35	48	45	...	963	784	23	
	181	8,645	35	5	3	31	74	71	37	5	9	56	178	-104	8,541	34	9	39	14	102	198	259	7,583	6,141		
Iceland-Faroes Conference																										
Iceland	24	4	312	9	9	9	321	1	1	1	1	6	10	5	...	185	143	24	
Faroes	25	1	38	3	3	3	41	...	1	1	4	...	50	50	25		
	5	350	12	12	12	362	1	2	1	1	6	11	9	...	235	193			
Tot. for Unions 1st Qu'r 1930	444	20,026	196	29	7	460	692	152	81	20	25	507	785	-93	19,933	112	43	134	38	289	616	670	19,468	15,448		
Tot. for Unions 1st Qu'r 1929	436	18,881	90	28	34	210	362	165	116	9	21	207	518	-156	18,725	104	35	108	37	254	538	601	18,044	13,414		
East African Union																										
Kenya	26	17	1,959	410	5	...	2	417	12	7	...	8	27	390	2,349	2	1	4	2	...	9	165	7,222	6,271	26	
West Tanganyika	27	5	369	18	1	...	4	23	3	1	...	4	8	15	384	4	2	2	...	8	36	1,274	1,225	27		
East Tanganyika	28	4	347	...	1	...	1	...	1	1	...	347	2	...	1	1	...	3	8	772	569	28		
Uganda	29	2	42	42	1	...	2	3	8	160	170	29		
	28	2,723	428	7	6	441	15	9	12	36	405	3,128	11	3	12	3	28	218	9,439	8,246						
Ethiopian Union Mission																										
Central Abyssinia	30	4	137	1	1	1	138	2	1	3	...	6	3	68	81	30			
Eastern	31	1	8	8	...	1	1	1	8	14	31			
Western	32	1	10	10	2	19	16	32				
Eritrea	33	1	58	7	7	...	1	1	64	1	1	2	68	52	33			
	7	213	8	8	1	1	7	220	3	2	3	8	8	163	163											
West African Mission																										
Sierra Leone	34	4	231	231	1	1	2	...	4	18	584	500	34			
Gold Coast	35	5	453	9	9	5	5	4	457	1	1	1	...	3	19	675	460	35		
Nigeria	36	4	582	2	2	-2	530	2	2	2	...	6	36	1,847	1,471	36		
	13	1,266	9	9	7	7	2	1,268	4	4	5	13	73	3,106	2,431											
Tot. for Miss'ns 4th Qu'r 1929	48	4,202	445	7	6	453	15	17	12	44	414	4,616	18	9	20	3	49	299	12,709	10,840						
*Tot. for Miss'ns 4th Qu'r 1923	40	3,197	505	10	12	527	13	8	10	31	493	3,693	20	10	12	42	255	11,534	10,775							

*Iceland-Faroes not included

Ah! then, when dreams their charms have spent, and charged our spirits with content, we look across the Western sky, and see that purple shadows lie, where late the sun has gone to rest, with, pristine colours on his breast. There Kil'manjaros's spotless snow

is stained with sunset's crimson glow; the mountains veiled in amethyst, and valleys wrapped in silvery mist; the night-bird calling in her flight, her dark wings spread like wings of night.

Two pictures rare! one "Dawn," one "Eve." Both touch the slum-

bering soul, and weave garlands of quiet thoughts which rest within the sanctuary of the breast.

We wonder if in dear Home-land, at sunset hour the loved ones stand with us and share the peace which drives the sordid cares from mortal lives.

Statistical Report of the Northern European

		Tithe	Tithe (weekly per capita)	Total Offerings (Columns 29-36)	Sabbath-School Offerings 12 Sabbaths	18th Sabbath Offerings	Weekly Offerings	Harvest Ingathering Offering	Annual Offerings	
		26	27	28	29	30	31	32	33	
Baltic Union										
Estonian Conference.....	1	E. Kr	6,623.82	0.85	2,420.36	1,480.83	426.53	57.46	250.46	93.93
Riga ".....	2	Lats	9,958.85	0.87	1,552.48	1,109.23	345.16	10.46	47.63
Courland ".....	3	Lats	6,881.24	0.70	1,045.63	741.63	197.89	5.10	76.50
Livonia ".....	4	Lats	6,676.62	0.73	1,102.96	656.42	218.57	56.00
Lithuanian ".....	5	Lits	3,691.90	1.36	1,095.55	621.05	256.45	10.00	33.85
Total		Lats	34,586.29	0.66	7,607.55	4,871.90	1,482.81	79.29	422.36	271.26
		\$	6,680.00	0.13	1,470.13	941.53	286.56	15.30	81.58	52.41
British Union										
South England Conference.....	6	£	3,517 16 10	2 6	767 7 6	471 9 0	198 19 8	20 19 1	44 1 9
North ".....	7	£	1,753 1 2	1 9	356 14 1	245 11 9	81 10 3	8 14 1	2 17 3
Welsh Mission.....	8	£	395 7 5	1 6	108 15 8	74 6 9	25 9 1	3 6 10	3 6 4
Scottish ".....	9	£	225 12 6	1 2	64 1 8	45 10 8	10 15 7	4 0 5	3 15 0
Irish ".....	10	£	168 1 3	1 9	68 6 7	36 2 11	27 4 9	1 10 0	1 5 0
Total		£	6,059 19 2	2 1	1,365 5 6	873 1 1	343 19 4	38 10 5	55 5 4
		\$	29,511.30	0.50	6,648.88	4,251.77	1,675.12	187.59	269.15
Polish Union										
Central Polish Conference.....	11	Zl.	5,502.52	1.55	1,595.63	1,200.56	305.54	51.98	10.00	22.05
East Polish ".....	12	Zl.	3,713.96	0.40	1,921.87	1,034.60	229.98	31.25	521.10	33.55
Posanian Conference.....	13	Zl.	8,340.64	1.77	2,913.99	1,422.36	490.17	208.70	688.60	10.90
Silesian ".....	14	Zl.	15,230.88	1.44	3,517.12	2,851.73	581.49
North Polish Mission.....	15	Zl.	810.02	0.20	354.30	150.16	19.32	5.15	165.00
South Polish ".....	16	Zl.	1,319.67	0.69	443.91	308.21	64.77	28.43	35.50
Total		Zl.	34,917.69	1.09	10,746.82	6,967.62	1,691.27	325.51	1,400.20	66.50
		\$	3,954.60	0.12	1,217.08	789.12	191.55	38.85	158.58	7.52
Scandinavian Union										
Danish Conference.....	17	D. Kr	44,623.87	1.26	11,563.53	6,661.19	3,328.86	190.89	461.56	457.25
South Norwegian Conf.	18	N. Kr	31,446.63	1.33	7,635.30	4,705.57	1,629.87	104.85	217.20	325.71
North Norwegian ".....	19	N. Kr	5,107.47	0.54	2,520.81	1,282.16	383.05	200.60
North Swedish ".....	20	S. Kr	16,172.98	1.14	7,583.86	3,673.12	2,183.74	25.00	278.34	150.12
South Swedish ".....	21	S. Kr	17,029.55	1.64	3,510.71	2,294.11	895.85	5.50	171.25	108.00
Swedish in Finland Conf.	22	F. mk.	49,200.75	11.79	8,374.10	4,729.35	2,187.55	1,151.00	125.15
Finnish Conference.....	23	F. mk.	95,412.75	6.12	22,853.35	15,844.80	4,662.55	656.00	403.30
Total		S. Kr	127,240.09	1.17	35,545.77	20,434.66	8,976.61	324.04	1,290.39	1,282.95
		\$	34,235.30	0.30	9,564.02	5,498.17	2,415.23	87.20	347.20	345.19
Iceland-Faroes Conference										
Iceland.....	24	Ic. Kr	6,581.80	1.62	7,568.72	1,090.60	200.00	5,559.63	718.49
Faroes.....	25	D. Kr	225.00	0.45	2,256.18	79.59	38.45	35.00	2,050.14	55.00
Total		Ic. Kr	6,855.10	1.51	10,811.21	1,187.36	244.29	42.53	8,051.72	785.31
		\$	1,517.47	0.33	2,282.54	262.84	54.08	9.42	1,782.36	173.84
Totals for 1st Quarter 1930		\$	75,898.67	0.29	21,182.65	11,743.43	4,622.59	148.77	2,557.31	848.11
1929		\$	69,711.60	0.28	17,487.05	10,084.42	4,264.51	370.72	1,081.35	417.73
East African Union										
Kenya.....	26	£	43 15 0	11 3	87 17 6	5 0 6	11 10	68 7 2	13 18 0
West Tanganyika.....	27	£	256 14 2	2½	312 4 0	84 19 0	42 1 1	15 3 6	165 5 5
East Tanganyika.....	28	£	95 1 8	4½	136 12 11	27 8 3	18 12 9	32 0 1	61 19 4
Uganda.....	29	£	35 12 6	2	64 14 8	18 15 10	5 3 9	32 13 6	8 1 7
		£	21 4 2	9½	29 12 6	6 2 11	4 7 4	19 2 3
Total		£	452 7 6	3	631 1 7	142 6 6	65 16 9	148 4 3	268 6 7
		\$	2,203.00	0.06	3,073.35	693.12	320.63	721.79	1,306.76
Ethiopian Union Mission										
Central Abyssinia.....	30	£	92 3 3	10½	59 0 3	12 11 4	18 4	12 0	24 17 0
Eastern ".....	31	£	8 12 6	1 8	6 17 7	1 15 1	4 6	18 0	4 0 0
Western ".....	32	£	3 0 0	5½	2 2 4	1 18 0	4 4
Eritrea.....	33	£	12 4 2	4	2 18 0	1 1 4	1 16 8
Total		£	115 19 11	10	70 18 2	17 5 9	3 3 10	1 10 0	28 17 0
		\$	564.90	0.20	345.33	84.20	15.54	7.30	140.50
West African Missions										
Sierra Leone.....	34	£	50 2 8	4	92 17 10	15 8 4	2 4 6	72 2 6	3 2 6
Gold Coast.....	35	£	135 0 10	5½	50 8 10	45 9 2	2 1 0	2 18 8
Nigeria.....	36	£	97 12 6	3	154 15 1	30 19 3	7 14 11	104 16 4	2 10 0
Total		£	282 16 0	4	298 1 9	91 16 9	12 0 5	176 18 10	8 11 2
		\$	1,377.10	0.08	1,451.70	447.25	58.54	861.71	41.69
Totals for 4th Quarter 1929		\$	4,145.00	0.08	4,870.38	1,224.57	394.71	7.30	1,583.50	1,488.95
1928		\$	*3,453.20	0.08	6,014.72	1,249.28	387.61	31.16	1,829.57	2,284.84

*Iceland-Faroes not included.

Division for the Quarter Ended March 31, 1930

Miscellaneous Offerings	Week of Sacrifice	Young People's Offerings	Big Weel. Mis- sions Extension Fund	Total Offerings (Columns 29-36 and Special Offerings)	Total Offerings Weekly per Capita	Percentage of Offerings to Tithe	Special Offer- ings for Foreign Fields	Total Offerings for Home Missionary Work	Total Contribu- tions for Local Church Work	Colporteur Sales	
34	35	36	37	38	39	40	41	42	43	44	
.....	5.00	106.15	31.63	2,451.99	0.12	37.0%	32.72	1,445.69	2,754.42	1
.....	40.00	26.86	1,579.34	0.15	15.8%	180.70	3,397.51	5,116.00	2
.....	24.51	1,045.63	0.10	15.2%	66.00	1,458.00	8,398.00	3
.....	171.97	1,102.96	0.13	16.5%	76.10	56.74	5,452.00	4
.....	174.20	1,095.55	0.40	29.6%	55.87	339.99	5
.....	136.96	342.97	70.51	7,678.03	0.15	392.83	7,083.07	22,767.10	
.....	26.47	66.28	13.61	1,483.74	0.03	22.2%	75.83	1,367.39	1,098.45	
7 0 6	2 10 0	22 7 6	5 13 5	773 0 11	6	21.9%	507 1 6	2,391 3 7	6
2 5 6	3 6	15 11 9	12 6	357 6 7	4	20.4%	30 18 1	275 13 11	2,340 4 2	7
.....	2 6 8	7 2	109 2 10	5	27.6%	9 10 10	57 5 9	368 17 9	8
.....	64 1 8	4	28.4%	3 3 0	37 6 7	9
.....	2 3 11	1 0 0	69 6 7	9	41.2%	5 8 6	75 12 10	232 11 10	10
9 6 0	2 13 6	42 9 10	7 13 1	1,372 18 7	5	22.6%	49 0 5	953 0 7	5,332 17 4	
45.31	13.02	206.92	37.28	6,686.16	0.11	238.73	4,641.25	25,971.06	
.....	5.50	48.09	1,643.72	0.46	29.8%	124.95	962.40	1,363.80	11
.....	71.39	253.77	2,175.64	0.23	58.5%	90.80	34.19	5,492.57	12
83.36	29.90	136.37	3,050.36	0.65	36.5%	255.97	1,009.91	2,634.45	13
74.81	9.09	3,517.12	0.33	23.1%	1,353.14	2,109.70	5,678.21	14
5.53	9.14	354.30	0.09	44.3%	31.38	7,047.84	15
.....	7.00	443.91	0.23	33.6%	346.49	1,030.50	16
163.70	132.02	438.23	11,185.05	0.35	32.0%	1,824.86	4,494.07	23,832.62	
18.53	14.93	49.63	1,266.71	0.04	204.33	503.25	2,668.81	
269.23	140.25	54.30	5,289.84	16,853.37	0.47	37.7%	2,523.82	3,139.86	32,120.18	17
.....	110.60	541.50	2,598.06	10,233.36	0.43	32.5%	502.84	3,702.82	35,576.84	18
.....	700.00	607.90	3,128.71	0.34	61.2%	30.63	350.00	9,511.20	19
47.67	1,117.00	110.87	4,302.43	11,886.29	0.84	73.4%	1,029.66	2,247.62	20
36.00	1,609.14	5,119.85	0.49	30.0%	2,101.87	1,041.16	25,405.60	21
.....	90.05	91.00	6,179.60	14,553.70	3.48	29.5%	194.05	18,916.00	22
733.50	548.20	15,153.75	38,007.10	2.44	39.8%	426.95	8,410.25	190,799.00	23
420.13	1,374.24	1,442.75	16,337.10	51,882.87	0.46	40.7%	6,213.45	11,250.00	123,143.82	
113.10	369.76	388.12	4,395.67	13,959.69	0.12	1,670.28	3,024.19	33,103.18	
.....	100.00	7,668.72	1.89	116.5%	5,862.85	24
.....	2,255.18	4.56	100.9%	25
.....	100.00	10,411.21	2.29	151.8%	5,862.85	
.....	22.12	2,304.63	0.50	1,288.54	
176.94	409.25	676.25	4,518.31	25,700.96	0.10	33.8%	2,189.17	9,536.08	68,704.35	
1,205.73	62.60	290.16	17,777.22	0.07	25.5%	3.90	2,269.78	7,355.51	54,699.95	
.....	4 15 0	3 3 2	87 17 6	1 2 6	200.8%	39 2 6	
.....	1 12 6	315 7 2	3	122.8%	46 15 0	26
.....	136 12 11	7	143.7%	55 5 0	27
.....	64 15 5	3 3	181.8%	34 14 0	28
.....	29 12 6	1 1	139.6%	29
.....	6 7 6	3 3 11	634 5 6	4 3	140.2%	175 16 6	
.....	31.05	15.57	3,088.92	0.09	856.28	
.....	20 1 7	59 0 3	8	64.3%	30
.....	6 17 7	1 4	79.7%	31
.....	2 2 4	4	70.5%	32
.....	2 18 0	1	23.7%	33
.....	20 1 7	70 18 2	6	61.1%	
.....	97.79	345.33	0.12	
.....	92 17 10	7 1/2	185.3%	34
.....	50 8 10	2	37.3%	35
.....	8 14 7	5 7	155 0 8	5	158.8%	11 1 7	36
.....	8 14 7	5 7	298 7 4	4 1/2	105.5%	11 1 7	
.....	42.51	1.33	1,453.03	0.09	53.95	
.....	171.55	16.93	4,887.31	0.09	117.9%	910.23	
.....	239.26	36.33	6,051.05	0.14	175.2%	152.53	

Recapitulation for the Quarter

Name of Conference or Mission	No. Churches	Baptism and Votc	Apostasy	Death	Net Gain	Present Membership	Evangelistic Workers	Colporteurs	No. Sabbath-Schools	Membership	Average Attendance	Tithe	Tithe per capita	Sabbath-School Offerings	Weekly Offerings	
1	2	3	4	5	6	7	8	9	10	11	12	13	14	15	16	
N. E. Division	15	
Baltic Union	1	80	65	35	10	18	4,046	59	45	101	4,269	3,054	6,680.00	0.13	1,228.09	15.30
British "	2	67	37	21	25	-30	4,515	95	78	126	4,602	3,681	29,511.30	0.50	5,926.89	...
Polish "	3	111	71	25	9	11	2,469	57	58	175	2,779	2,379	3,954.60	0.12	980.67	36.85
Scand. "	4	181	40	71	37	-104	8,541	96	102	259	7,583	6,141	34,235.30	0.30	7,913.45	87.20
Iceland-Faroes Union	5	5	12	12	362	5	6	9	235	193	1,517.47	0.33	316.92	9.42
Totals for Unions	444	225	152	81	-93	19,933	327	289	670	19,468	15,448	\$ 75,898.67	0.29	16,366.02	148.77	
E. Afr'n Union Miss.	6	28	435	15	9	405	3,128	29	...	218	9,439	8,246	\$ 2,203.00	0.06	1,013.75	...
Ethiopian "	7	7	8	...	1	7	220	8	...	8	163	163	564.90	0.20	605.53	7.30
W. Afr'n "	8	13	9	...	7	2	1,268	13	...	73	3,107	2,431	1,377.10	0.08	505.79	...
Totals for Missions	48	452	15	17	414	4,616	50	299	12,709	10,840	\$ 4,145.00	0.03	1,619.23	7.30		
Grand Tot. 1st Q. 1930	492	677	167	98	321	24,549	377	289	969	32,177	26,288	\$ 80,043.67	0.25	17,985.30	156.02	
1929	481	638	178	125	344	22,764	332	260	864	29,821	24,385	\$ 74,541.40	0.25	16,192.54	413.17	

"Brethren, Pray for Us"

As we have read in the daily papers of the persecutions and sufferings of the Russian people, we have naturally wondered how it fares with our brethren and sisters in the faith there. It is, of course, impossible to secure very much in the way of information, but the following extracts from letters, which have been culled from a recent issue of the *Botschafter*, will serve to give a little idea of the anxiety and distress, which our people are suffering at this time.

"How beautiful is the thought that we as God's children throughout the whole earth are likened to the body of Christ, and when one member suffers, the whole body suffers. So we in our need here, and you there, where more freedom reigns, can unite in prayer to our Father for help. Like an express train the history of the world is hurrying to its end. Happy are those who realize this and make the most of the remaining time. It is verily precious. As long as you have the freedom, it calls for untiring activity, for such conditions cannot, even with you, last much longer. Only when it is past will many, with regret, say: When I could, I did not make use of the time and now it is gone."

"One of our ministers has been in prison for several weeks. His dear wife wanted to give him the Bible, but that was not allowed.

The Government does not want to use its power directly against religion, but seeks to do it in a round-about way, in which the believers are politically accused. This, of course, is even worse, but with them it is the most successful method. The sects become branded as opposers of the State, the preachers are banished, and where a few members continue to gather together, the place of meeting is taken away. We are frequently hearing of the arrest of our brethren. We are shouted at almost unceasingly that as a counter-revolutionary organization we are supported by foreign capital in order to work against the Soviet Government. That our aim is to witness for eternal things, they cannot at all understand. You have no idea how we have lived recently. We sometimes think our nerves cannot hold out longer."

"The State takes possession of all houses belonging to members of 'sects,' for as such they have lost their franchise, and the owner is turned on the street. They have taken our meeting place, and all we can now do is to read the Scriptures at home and pray. For the Sabbath-school lessons we simply read the epistle to the Hebrews. How wonderful it is that in these troublesome hours we can find comfort in the Saviour from Whom no one can separate us."

"When we heard that several hundred prisoners were to be sent

to the North, among whom were also our brethren, we went to the prison. The prisoners walked in the middle of the street, surrounded by soldiers: one of our brethren made us understand by finger signs that he was sentenced to three years' penal servitude. This was a terrible scene! We all wept and he wept also. We saw him enter the train and then he disappeared, perhaps for ever, from the eyes of his family and from us. So it goes everywhere, even in the main town. Think of us in your prayers."

What is happening in Russia today is but the fulfilment of what we have for years been expecting would come. It is, no doubt, but the beginning. Who knows how soon the dove of peace will leave our shores and the winds of strife be let loose upon our land. Let us therefore work while it is day, for the night cometh when no man can work.

Real Prayer

Look unto Jesus in simplicity and faith. Gaze upon Jesus until the spirit faints under excess of light. We do not half pray. We do not half believe . . . Pray as you never before prayed that the Lord will lay His hand upon you, that you may be able to comprehend . . . the love of Christ . . . that you may be filled with all the fullness of God.—"Testimonies," Vol. 7, page 214.

Ended March 31, 1930

Harvest Ingathering	Annual Offering	Miscellaneous and Young People	Self-Denial	Big Week and Special Offerings	Total Offerings (including Big Week and Special)	Total Offerings per capita	Percentage of Offerings to Tithe	Total Contributions for Home Missionary Work	Total Contributions for Local Church Work	Colporteur Sales	
17	18	19	20	21	22	23	24	25	26	27	
81.58	52.41	66.28	26.47	13.61	1,483.74	0.08	22.2%	75.83	1,367.39	1,098.45	1
187.59	269.15	252.23	13.02	37.28	6,686.16	0.11	22.6%	238.73	4,641.25	25,971.06	2
158.58	7.52	33.46	49.63	1,266.71	0.04	32.0%	204.33	503.25	2,668.81	3
347.20	345.19	501.22	369.76	4,395.67	0.12	40.7%	1,670.28	3,024.19	33,103.18	4
1,782.36	173.84	22.12	2,334.65	0.50	151.8%	5,862.55	5
2,557.31	848.11	853.19	409.25	4,518.31	25,700.96	0.10	33.8%	2,189.17	9,536.08	68,704.35	
721.79	1,306.76	31.05	15.57	3,088.92	0.09	140.2%	856.28	6
.....	140.50	97.79	345.33	0.12	61.1%	7
861.71	41.69	42.51	1.36	1,453.06	0.09	105.5%	53.95	8
1,583.50	1,488.95	171.35	16.93	4,887.31	0.09	117.9%	910.23	
4,140.81	2,387.06	853.19	580.60	4,585.24	30,588.27	0.10	38.2%	2,189.17	9,536.08	68,337.72	
4,187.96	2,889.62	316.42	359.46	25,564.85	0.03	34.2%	2,269.78	7,355.51	58,845.65	

Baptisms in the Baltic Union

BY T. T. BABIENCO

We are all of good courage and happy in the work. We have already seen some fruitage of the winter's work. In the Vidseme (Livonia) Conference thirteen souls have been baptized. Six of these are the results of a series of meetings held by the Departmental Secretary of that conference last winter. In the Riga Conference, we have baptized sixty-five souls, forty-three of whom are the fruitage of the series of meetings which the writer started in Riga last November. The meetings were held for the Latvians, Germans, and Russians. We have baptized eight Germans, ten Russians, and twenty-five Latvians. The meetings were just as strongly attended at the close as at the beginning. Another baptism took place on April 27th, after which the writer had to leave for the General Conference.

Many times this winter have we seen the power of God moving upon the hearts of the people bringing the backslider again to the church. One experience should be mentioned here: A man wanted to be baptized. He met with great opposition from his relatives. Together with the spiritual father, they declared him to be out of his mind and put him into an asylum for the insane. But our people prayed for him and he was released. He was baptized early this month and is now rejoicing in the Lord. "Oh, that men would praise the

Lord for His goodness, and for His wonderful works to the children of men."

We are very pleased with the progress made in the book work. A short time ago we had two very profitable colporteur institutes in our Union, one in Latvia and another in Estonia. Elder C. E. Weaks was with us, and led out in the institute work. All the colporteurs are of good courage and are working very hard, and we can say to the glory of God that our sales this past quarter show an increase of Lats 6,548 (\$1,264) over the same period in 1929. Our aim was to reach ten per cent increase, but we have, with the help of our heavenly Father, reached forty per cent, and we hope to keep this up throughout the year.



Transportation Notes

MR. AND MRS. J. G. SLATE arrived in Hamburg on March 15th and left on the 21st for the General Conference on s.s. "Albert Ballin." They are from South Africa.

DR. AND MRS. A. N. TONGE and two children, also from South Africa, arrived in England on March 17th and left on s.s. "Minnehada" for the General Conference.

MR. AND MRS. E. E. COSSENTINE, from Australia, arrived in England on the s.s. "Barradine" on March 22nd and sailed for the General Conference within a few days.

MR. AND MRS. B. M. HEALD and

one child, and Mr. and Mrs. J. V. Wilson and three children, arrived together from South Africa and left on the same boat from London for America on March 27th. They are taking furlough and attending the General Conference.

MR. C. JENSEN arrived in Marseilles on March 28th en route for Denmark, his native land, on furlough from Abyssinia. He was accompanied by Mr. and Mrs. Sorensen.

MISS G. A. CLARKE, from East Africa, arrived in England for furlough on April 4th, accompanied by Mr. and Mrs. S. G. Maxwell.

MR. W. H. BRANSON with his wife and daughter passed through England on his way to the General Conference, and left on the s.s. "Olympia" on April 9th. They were accompanied by one of our native evangelists, Brother James Malinki.

MR. AND MRS. J. S. JAMES arrived in England on April 12th on their way to America for furlough and the General Conference. They left on the s.s. "Majestic" on April 16th. Mr. James is from the Oriental Watchman Press in India.

MR. DIETEL and Mr. Holder, en route to America from Spain, left England on the s.s. "Penland" on April 26th.

MR. C. L. TORREY, the treasurer of the Southern Asia Division, with Mrs. Torrey, left for America on the s.s. "Berengaria" for furlough and the General Conference.

MR. A. W. CORMACK, also from the Southern Asia Division, sailed

Home Missionary Report for First Quarter 1930

	Baltic Union	British Union	Polish Union	Scandinavian Union	Iceland and Faroes	Totals, 1st Quarter, 1930	Totals, 1st Quarter, 1929	Increase
Church Membership	4,046	4,515	2,469	8,541	362	19,933	19,071	862
Number Reporting	2,328	1,580	1,347	1,727	6,982	4,734	2,248
Percentage Reporting	58%	35%	55%	20%	35%	25%	10%
Missionary Activities								
Missionary Visits	19,050	7,043	6,536	5,757	38,386	27,901	10,485
Bible Readings	13,884	1,824	11,155	5,228	32,091	17,228	14,863
Hours of Christian Help Work	11,951	19,909	1,345	4,769	37,974	26,205	11,769
Treatments Given	3,107	916	642	1,446	6,111	8,956	-2,845
Magazines Distributed	22,157	89,712	9,299	48,940	170,108	127,206	42,902
Tracts Distributed	7,878	30,166	218	9,851	48,113	53,203	-5,090
New Subscriptions	748	771	49	3,029	4,597	2,980	1,617
Books Distributed	2,233	5,649	101	2,405	10,388	6,199	4,189
Missionary Letters Written	2,115	3,104	310	2,053	7,582	5,852	1,730
Missionary Letters Received	972	1,167	206	822	3,167	2,620	547
SOULS WON	2	20	12	24	58	23	35

on the s.s. "Hamburg" on May 10th, en route for the General Conference.

DR. OTTOSEN, from Skodsborg, left on the s.s. "Berengaria," also for the General Conference.

MR. AND MRS. ERNENPUTSCH, from South America, arrived in England on the s.s. "Reliance" on May 3rd and left one week later on the s.s. "Hamburg" for the General Conference.

MR. DANIEL THEUNISSEN, a native evangelist from South Africa, arrived in England on the s.s. "Windsor Castle" and left a few days later on the s.s. "Majestic" to attend the General Conference.

DR. A. KUBE, and Messrs. J. Isaac and R. J. Cunitz, from Poland, left on the s.s. "Majestic" on April 16th. They are also attending the General Conference.

MR. AND MRS. G. B. HAINING and family, well known to many at Watford and Glasgow, sailed for America on s.s. "Majestic" on April 15th. They intend to make their home in America for the future.

MR. J. H. SCHILLING, of the Northern European Division, left for America on the s.s. "Europa" on April 17th.

DR. R. C. LINDHOLM, who has been studying for medical degrees in Edinburgh, passed his examinations successfully and left for work in India on the s.s. "Macedonia" on April 25th.

MR. BROUCHY, of the Buenos Aires Conference, sailed to America on May 3rd.

MR. E. BURROWS, formerly a student at Stanborough College, left to take up further studies in America on May 3rd.

DR. AND MRS. H. E. HARGREAVES, of Watford, left for Persia on May 8th. Dr. Hargreaves returns to his work, but this is Mrs. Hargreaves' first trip.

MR. AND MRS. SPROGE, who have

been staying in England for a short time studying the language, left for East Africa on May 9th.

DR. AND MRS. G. A. MADGWICK, who have been in England for a time for furlough and extra studies, returned to East Africa on May 9th. Dr. Madgwick is in charge of our medical work in East Africa.

MR. A. MATTER, who has been spending furlough in Switzerland, left for America to attend the General Conference, on May 14th.

Our Native Work in Heathen Africa

NAME OF CONFERENCE OR MISSION	1	2	3	4	5	6	7	8	9	10	11	Train. Schs		
												Number in Baptismal Class	Enrolment	
East African Union Mission														
Kenya	1	...	4	...	295	6	29	334	861	2	36			
West Tanganyika	2	52	12	...	54	315	1	6			
East Tanganyika	3	15	5	8	28	275	1	24			
Uganda	4	...	1	...	7	3	1	12	35			
Totals			5		369	16	38	428	1,486	4	66			
Ethiopian Union Mission														
Central Abyssinia	5	1	10	1	...	12			
Eastern "	6	1	2	4			
Western "	7	2			
Eritrea	8	4	4			
Totals		1			17	1		19	4					
West African Missions														
*Sierra Leone	9	1	5	8	10	24	122	1	20			
Gold Coast	10	1	...	12	13	...	1	...			
Nigeria	11	...	4	4	22	30	393	1	27			
Totals		2	9	24			32	67	515	3	47			
Grand Totals 4th Quarter 1929	3	14	24	386	17	70	514	2,005	7	113				
Grand Totals 4th Quarter 1928	3	9	58	410	2	19	501	1,477	8	322				

*No Report †Vacation ‡2nd Quarter

Missionary Volunteer Report for First Quarter 1930

	Baltic Union	British Union	Polish Union	Scandinavian Union	Totals, 1st Quarter, 1930	Totals, 1st Quarter, 1929	Increase
No. Societies.....	60	69	44	75	248	220	28
Membership.....	820	1,485	735	1,658	4,698	4,031	667
No. Reporting.....	595	732	334	441	2,102	1,542	560
Percentage Reporting.....	73%	49%	45%	27%	45%	38%	7%
Missionary Activities							
Missionary Visits.....	6,251	2,164	1,851	1,305	11,571	9,038	2,533
Bible Readings.....	3,253	306	3,428	1,014	8,206	5,490	2,716
Hours of Christian Help Work.....	3,796	11,682	275	1,055	16,808	13,154	3,654
Treatments Given.....	614	262	190	327	1,393	1,028	365
Magazines Distributed.....	7,981	37,391	6,785	10,454	62,591	54,807	7,784
Tracts Distributed.....	2,292	10,026	63	1,276	13,657	9,221	4,436
New Subscriptions.....	273	547	1,351	2,171	751	1,420
Books Distributed.....	670	3,080	27	661	4,418	2,310	2,108
Missionary Letters Written.....	915	1,349	127	837	3,228	2,298	930
Missionary Letters Received.....	438	561	71	241	1,311	1,095	216
SOULS WON	9	20	29	15	14

MR. AND MRS. A. W. ANDERSON, from Australia, who have been staying in London for some special study which Mr. Anderson is taking up, left England to attend the General Conference on May 14th. They left their sons in London, where they are connecting with the evangelical work.

DR. H. C. MENKEL passed through England on his way to the General Conference and left on the s.s. "Bremen" on April 24th.

The following, who are either missionaries whose homes are in

England, or workers resident in England, have left for the General Conference:

- A. H. Williams.
- W. H. Hurlow.
- O. M. Dorland.
- C. E. Weaks.
- W. H. Meredith.
- L. H. Christian.
- W. McClements.
- S. G. Maxwell.
- A. Carey.
- J. J. Annable.

C. H. ANSCOMBE.

THE GOOD HEALTH LEAGUE

BY F. W. GOODALL

On Wednesday, May 14th, at the New Holloway Hall, North London, a special health demonstration was held in connection with the Good Health League. This meeting was one of a series which have been held in the South England Conference during the past six months.

Lectures and demonstrations have been given in Walthamstow, Wimbledon, North London, North-west London, Stanborough Park, Plymouth, Brighton, and Cambridge. In addition, several Home Nursing classes have been held for the purpose of instructing members in first aid and home nursing, including the giving of simple treatments, etc. Nurse Clifford and later Nurse Handysides have given splendid help in teaching these classes. We are also indebted to our doctors and others who have rendered splendid service in promoting Good Health League principles.

This health demonstration, the first that we have attempted on such a large scale, was well attended by members and friends.

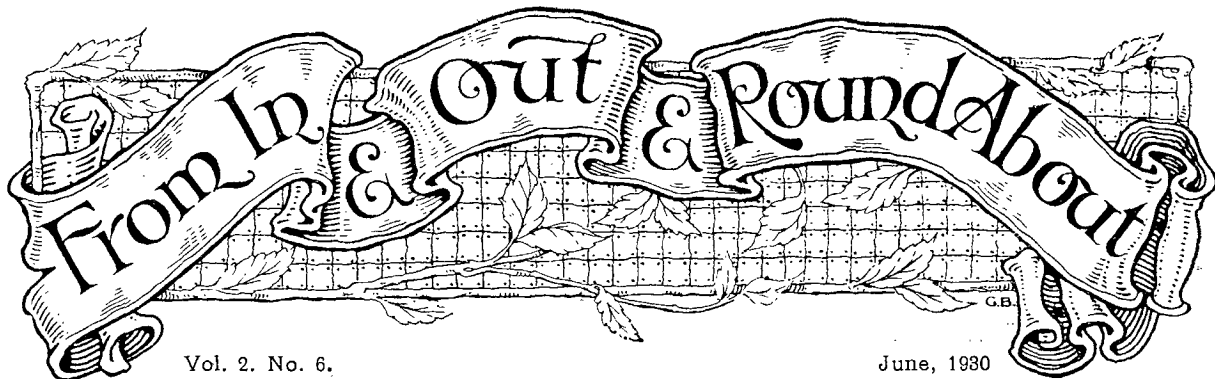
(Continued on page 12.)

for the 4th Quarter 1929

Stat. Scho's		Out-Schools		Girls' Schs		Med. Miss. W		European Tithe	Native Tithe	Per Cent of Native to Total Tithe	
Number of	Enrolment	Number of	Enrolment	Number of	Enrolment	No. Per. giving Treatments	No. Treatments given				
12	13	14	15	16	17	18	19	20	21	22	
3	260	282	10,020	2	51	15	6,618	£ 43 15 0	£ 198 4 2	77.2%	1
5	203	36	1,085	1	5	8	6,071	58 10 0	42 3 4	44.3%	2
3	205	4	100	1	13	2	600	16 15 0	18 17 6	52.9%	3
1	14	3	71	2	2,000	15 13 4	5 10 10	26.1%	4
12	682	325	11,276	4	69	27	15,289	£187 11 8	264 15 10	58.5%	
								\$ 913.51	1,289.49		
12	...	1	...	1	...	2	331	£ 92 3 3	5
11	2	277	8 12 6	6
1	8	1	6	1	85	2 14 0	6 0	7.9%	7
...	12 4 2	8
4	8	2	6	1	...	5	693	£115 13 11	6 0	0.2%	
								\$ 563.74	1.16		
...	23	£ 17 14 9	£ 32 7 11	64.6%	9
1	50	138 11 8	96 9 2	71.4%	10
2	132	1	39	15	2,600	40 14 2	56 18 4	58.2%	11
3	182	1	39	38	2,600	£ 97 0 7	185 15 5	65.6%	
								\$ 472.53	904.57		
19	872	328	12,236	5	69	70	18,582	£400 6 2	450 17 3	52.9%	
								\$ 1,949.78	2,195.22		
33	1,443	296	12,236	6	131	48	18,700	£302 7 1	406 14 7	57.3%	
								\$ 1,472.80	1,980.40		

The Advent Survey
Organ of
The Northern European Division of the
General Conference of S.D.A.
Editor: Ella M. Eastcott

Published monthly on the 25th day of the month. Price 2/6 per annum. Subscriptions to be sent to your local Publishing House.



Vol. 2. No. 6.

June, 1930

ABOUT the time this issue leaves the press the General Conference session will be opening in San Francisco. Let us pray earnestly and sincerely for this meeting, especially for those upon whom the heavy responsibility rests.

THE three pictures of maps in the foregoing pages are reduced photographs of the large wall maps which have been made for exhibition at the General Conference. The shaded parts indicate the territory belonging to the Northern European Division. By means of various coloured dots, information as to workers, churches, groups, Sabbath-schools, etc., etc., has been indicated on the original maps. These dots can hardly be seen in the photographs, but if you are blessed with good eyesight you will be able to read the different items in the panels at the side of the pictures.

WE have been glad to meet many of those who have passed through England on their way to San Francisco. We appreciate very much that Brother Toblassen, president of the South Norway Conference, was able to stay long enough to give us a very helpful talk at our weekly prayer meeting.

THE British Union College has just closed. There were fewer graduates this year than usual, although, in addition to those receiving the College diploma, quite a number carried away certificates for having been successful in certain examinations. These will no doubt continue their studies until they also graduate from one of the specified courses. Three from the Sanitarium were awarded the nurses' diploma, one had completed the ministerial course, and one the Bible-workers' course. All

five graduates will become workers in the cause. Brother Vine, with his wife, is under appointment for Nigeria; the others take up their duties in the home fields. Immediately following the close of the school thirty-five of the students went to various parts into the colporteur work; they hope, by this means, to gain scholarships for the coming school year. We wish all these young people abundant success in their different spheres of labour.

FOR the first time we are reporting the Young People's offerings in a special column. These have previously been included in Miscellaneous offerings. Inasmuch as the Young People's departments in the various unions have their definite goal, we thought it would be helpful to show exactly how the amounts come in each quarter. The Young People in the Northern European Division are working towards supplying the means for:

1. A dispensary in Abyssinia.
2. Advance missionary work in Nigeria.
3. Three native workers in Uganda.
4. Work amongst the native Christians in Northern Abyssinia.

SINCE the visit of Miss Katherine Jensen to Europe last year, stronger plans have been laid for the promulgation of our health principles. The British Union has appointed two of its most experienced nurses for this work. Miss E. Crooks, who for several years was matron at the Stanboroughs Sanitarium, Watford, will work in South England, while Miss J. Handysides will devote her time to the northern section. The children in our church schools will be

taught the general principles of hygiene and the importance of healthful living. Their progress in this will be directly supervised by the nurses. Parents and others will have the benefit of lectures on home nursing and other subjects, as well as cooking demonstrations. A report of one of these demonstrations will be seen elsewhere in this issue. Let us support these nurses as they seek to strengthen the right arm of our message.

The Good Health League (Continued from page 11.)

In the afternoon at 3 p.m. Nurse Handysides prepared and cooked a three-course dinner before an audience of over 150.

The public meeting in the evening at 7.30 was attended by an interested company of 250 or more.

Mr. D. M. Edmonds very ably filled the place of chairman, speaking words of appreciation and encouragement to those who had helped to make the demonstration a success.

After the evening meeting, all were invited to visit the adjoining hall where exhibits of foods were tastefully arranged. In this exhibit, Granose Foods Ltd., The Stanborough Press Ltd., the Sanitarium, The Health and Cleanliness Council, The Dental Board, as well as a number of other firms were well represented.

The Good Health League seeks to extend its good work to all parts of the South England field. Its aim is "A Health Centre in every Church." By this means it is hoped that not only will our own members secure help, but that a large number of people will be won to the truth through the health message.