



Vol. 11. No. 4

April, 1940

News from the East Nordic Union

BY G. A. LINDSAY

WE are glad that we can again share with the readers of the ADVENT SURVEY some of the things that we have experienced in our little corner of the world field. Times have changed since we last wrote. Part of our Union field is exposed to the terrible cruelty of war. It is a comfort to know that practically the whole world sympathizes with Finland in her sad plight and sends her so much help. The Advent believers are also encouraged at the thought that fellow-believers in all the world pray for them. They are being strengthened and kept by the sure hope of the soon coming of Jesus. The "black-outs," both in the cities and in the rural districts of Finland, teach the people of God many precious lessons. John 1:5 in their revised version reads as does the Moffatt version: "Amid the darkness the light shone, but the darkness did not master it." Thus it is for the Adventists. The darkest night is still light to those who have the lamp of God within. Darkness can never master it.

Evidences of the sure blessings of God in our field are numerous. While the baptisms were not as many as we had hoped for last year, the net gain in membership for the Union was 157. The total membership at the end of last year is 5,467. This is an increase of 1,823 since the Union was organized eight and a half years ago. We praise God for this increase.

Looking back over the results of the work last year, we see God's

leadings in several places. Both in Finland and in Sweden the evangelists relate how God mightily wrought for those who met difficulties in their work. Interested hearers travelled long ways in the cold winter to attend the meetings. In Dalcarlia, Sweden, a man and his wife spent ten kroner a week on travelling to attend the meetings. Another rode twenty miles or a double journey of forty miles four times a week to attend meetings. Last winter in Terijoki, Finland, a few miles from the Russian border, one of the brethren pleaded for a worker. As Pastor Seljavaara had an effort in Viborg, forty miles west of Teri-

joki, our brother promised the committee that he would defray the expenses for an effort in his town, including Brother Seljavaara's travelling as well as the wages for a Bible-worker. The committee accepted the offer. Last June more than thirty new converts joined the Advent movement in that place. This brother is now a happy man. He had owned a small factory, but when the invading army came he and his family, with all the other citizens of the town, had to flee, leaving everything behind. All his belongings, houses, machinery, are now gone, but that which he had invested in the salvation of souls is the best treasure he could take with him from the doomed town. It was also in the last hour that the message was preached in Terijoki.

Statistical Number

UNDER war conditions, we are not this year publishing a Special Statistical Number during the month of May, but are making this take the place of the usual monthly edition of the ADVENT SURVEY. This means that our regular readers will not receive the SURVEY during May. Those to whom the Statistical Report of the Division is usually sent will receive this instead. The next ordinary issue of the ADVENT SURVEY will bear the date, June, 1940. Please keep this notice in mind so that you will understand why the May issue of the ADVENT SURVEY does not come to you.

From a financial point of view we have also seen God's blessings. Although many churches in Finland were not able to send in their funds to the conference either for November or December before the books closed, due to the scattering of the membership that came as a result of the sudden blow on November 20th, the tithes for the Union is seven per cent better than in 1938. The mission offerings were eight per cent better than the previous year's total.

It was a real joy to see the excellent spirit of co-operation that was manifested in the missions campaigns. Especially was it noticed in the Harvest Ingathering Campaign. The campaign brought

in Kr.122,803, an increase of eleven per cent over the previous year's result.

What this year shall bring us we do not know, but we are confident that "all things work together for good to them that love God." Having just returned from a sixteen-days' itinerary in Finland I can

say that God has wonderfully protected His children in the midst of bomb raids. A few have received smaller injuries. But it is nothing less than miraculous that they have escaped from houses that have been smashed to pieces. Continue to pray for Finland and especially for God's people in that land.

service tell in their letters of wonderful experiences in witnessing to their comrades. May God bless and protect these faithful witnesses. God is doing a new work in the hearts of His children. We have long prayed for such an experience and now indeed God is answering these prayers. He is deepening our spirituality, which has been too superficial. God has led many to search their hearts. The Bible has truly become God's word to us. Salvation is now a personal necessity for His people. Salvation and preparation to meet Christ is become more to us than ever before. May God make of us real Adventists and true Christians.

Finland in Wartime

THE European war which began last September did already to some degree affect our work. The government of Finland decided to take measures for the protection of the young republic in case the neutrality of our country should be threatened by some great power. Therefore a great number of men were called to preparatory service. This arrangement naturally caused difficulties in finding meeting halls for the evangelists. Most buildings were taken for military purposes. However, our ministers succeeded in getting suitable meeting places, and in October public efforts began in twelve or more different places, from Salla in the north to Helsingfors in the south, and from Outokumpu and Värtsilä in the east to Vasa in the west.

Then Soviet Russia requested a council between their leaders and some delegates of our little country. The outcome was very uncertain. Thus the field work began under unfavourable circumstances. Nevertheless the beginning of public efforts was very promising. Then suddenly the war burst forth. The efforts stopped immediately in Helsingfors and in Lappeenranta near Viborg. Soon the younger workers were called to serve the country in various ways. At present there are only three ministers who are doing some evangelistic work. It is very difficult to gather people to the public meetings even in those cities where it is still permitted to hold public meetings. A great part of the inhabitants have, through the general evacuation, or voluntarily, moved to safer places. Factories are working mostly during the evening hours or at night. Due to the "black-out," the many air-raid alarms and bombardments, the people stay at home. The work

is thus limited almost wholly to personal contacts or pastoral work in the churches. Our Bible-workers are holding cottage and family meetings. The need is very great everywhere. A few workers are very busy finding the hundreds of churchmembers who are now scattered throughout the country. Many are suffering and in need of food and clothes. We are all helping as well as we can.

This serious time has spoken to innumerable souls, leading many to think about their Creator and their own salvation. There has never been a time when so many have asked, "What shall I do to be saved?" Hundreds have now been scattered where previously only our faithful colporteurs have been. Much free literature is being distributed to many by these Adventist believers and by the brethren who are in service. We have never seen people pray as they do to-day. It is more important to them than their daily bread. Our workers in

There are at present 2,500 Seventh-Day Adventists in Finland, scattered in every city and dozens of other places, but so far as we know to date, none of them has suffered death due to air-raids. God has wonderfully protected all. Many of them, especially from East Finland, have lost their homes and all the material things they had in this life. They are all of good courage, praising their God and Saviour for all His goodness toward them. God is wonderfully leading His people forward and upward in these trying times.

We do thank you all for the help that we have received and are receiving still. We send our very heartiest Christian greeting to all the leaders and workers in our Division and to all readers of the ADVENT SURVEY. Pray for us.

Finland's Awakening

BY JOHN LARSSON

UP to the time of writing, four and a half months have passed since the conflict between Finland and the Soviet Union began. During the time mentioned the appearance of Finland has been altered in many respects, not the least in its spiritual aspects.

For a long time before the outbreak of war, the people of Finland seemed to have become entirely indifferent to any interest in the Word of God. Religiously the people seemed to be controlled by a spirit of lethargy. The conscious need of God was growing less and

less. The fight against sin, and seeking to escape from soul-destroying influences, aroused little concern. The Cross was preached about, but the power of the crucifixion no one wanted to know. The externals of divine service, a "form of godliness," was enough. The soul was contented with material luxury and the manifold pleasures of existence.

Many who were looking for a new world through political changes, new social reforms, a revised religious outlook, have now cast away their confidence since

they have witnessed the grim overthrow of liberty-loving nations. They have lost faith in their dreams of a new order of things. These have collapsed like a pack of cards. One enthusiastic communist expressed the thoughts of thousands to-day: "Only one thing is certain, and that is that all things are uncertain." Multitudes from all classes of society in Finland are in this situation.

Many are looking to-day for something stable to fasten to in this time of change. Religion is attracting the thoughts of many. Just before the war broke out, a communist wrote a letter to the president in which he told how he had lost faith in communism, given it up, and been converted to God, and received faith to live a new life in Jesus Christ. He sees no hope from any other source. Infidelity is on the run in Finland because with their own eyes the people have seen the fruits of godlessness in the Soviet brutal attack on unprotected women and children, in demolished cities, burning towns, and ruined homes. The war has delivered mammon-lovers and devotees of pleasure from their bondage. Despair of material good has weakened hope and trust in the uncertain riches. In its place a longing after eternal treasures grows stronger. Souls that earlier had no longing after good are now seeking the word of truth, and ask prayers for themselves and those dear to them.

Gladdening news comes from the front. Soldiers write home and report their conversions and experience of salvation. Prayer meetings are held in the trenches, and the spirit of prayer is carried into the front lines. Many young men go down on their knees and commend themselves to God before they go forward to the fighting positions. There is indeed an awakening at the front.

At the home base, among the civil population, God has inclined many hearts to Himself. People are now more accessible to God's Word than before. They ask more seriously after God and inquire more after light. We expect that a genuine revival will take place in the country, and our prayer is that God will cause this break-

away to develop into a flood of spiritual blessing, also that the Advent people will be ready to

carry the truth of the Advent message into all the cities and towns of Finland.

Literature Work in Finland

BY YRJO MIETTENEN

THE literature work in Finland began the year 1939 very promisingly. During the first quarter of the year the sales went up by fifty per cent compared with the same period in 1938, which has been the best so far. The total for 1939 was twenty-four per cent better than for the same period in 1938, and went beyond the best we have ever had in Finland. The total sales exceeded two million marks (Mks 2,107,731). We can never with words sufficiently express our gratitude to God for this result.

Our health paper, which is three years old, had at the close of the year 26,000 subscribers. The average edition during the first part of the year was 30,000 monthly.

The larger part of the year 1939 our work seemed to be in a favourable condition. When the harvest-time came, clouds appeared in the hitherto clear sky. On November 20th the storm burst suddenly. It came not as a friendly shower, but as a violent hail of bombs which soon destroyed in the beautiful city of Helsingfors many large residences. Beautiful Finland had become an object of cruel war in which a people less than 4,000,000 were violently attacked by one of 180,000,000. Under these conditions people were compelled

to use their little means to procure for themselves the necessities of life, and this naturally worked against the sale of our literature. Our sales came down to ten to twenty per cent of what they had been the year before. Most of the colporteurs were obliged to drop their book work, but some continued, notwithstanding difficulties.

Many work in the cities where they are often bombed, breaking off their work and fleeing to shelters when the enemy comes with flying machines to drop death and destruction. At these times our office staff have often been obliged to flee for safety, but in spite of all, the workers in the publishing house have stuck to their posts. God has wonderfully protected our lives in the centre of the city where we were especially exposed to danger.

These are trying days for Finland, but we trust that God will help us and that the work of the Lord will be duly finished in this land. May the love of souls burn in our hearts even more strongly than does the fire that the bombs have kindled in many a Finnish home. May God make us worthy of that city in the kingdom of God where war and sorrow are for ever ended.

Book Sales in Norway in 1939

BY L. A. NILSEN

WE stood before a new year as we faced 1939. The year just passed away had been a good one, in that we had not only kept the position we reached in 1937, but had even gone beyond it to the amount of Kr.27,500, so that our sales in 1938 reached Kr.290,509. It was therefore with some nervousness that we stepped into 1939, and the trepidation took on the character of a well-grounded fear that our sales would go down. Why were we afraid? Because we

were compelled to build up our sales on the literature we had in store, without the addition of anything new, and it was with that task before us that we entered 1939. True, we might get out one or two trifles in the course of the year, but otherwise there was nothing new provided for 1939.

Our satisfaction may be imagined then when at the close of the year we found that the sales had kept up to within Kr.2,000. We are very thankful to God for this

result, and we would also thank our faithful colporteurs for their loyalty during the year.

In 1939 we have sold the following books and tracts:

Books of a religious character	6,650
Books dealing with youth, home, and health ...	21,900
Tracts	38,000
Periodicals: <i>Tidens Tale</i>	80,500
Health papers: <i>Sundhedsbladet</i>	171,000

One hundred and nine persons have had part in these sales during 1939, of whom forty to fifty are full-time workers, while others have worked for shorter periods. Twenty-seven students from the

mission school did colporteur work during the summer, and seventeen of these won between them a total of twenty-three scholarships, or an average of one and a third scholarships each.

For 1940 we have a new book in hand: A. S. Maxwell's *Our Wonderful Bible*. We anticipate great things from this book, especially in these unquiet days when men are perturbed with wars and rumours of wars, and their hearts are more drawn toward the eternal riches. We know not what the future has in store for our colporteur work in Norway, but God is in command and He will take care of His own work if we only relate ourselves loyally to His service.

A Word from the Far North

BY T. T. TOBIASSEN

MANY think, even as I myself did once, that the folk who dwell and get their living in the regions around the Polar circle are slow, silent, and exclusive people, but that is an entire mistake. It is a lively and wide-awake disposition that we meet in those parts, an alive, alert race that inhabits the provinces of the Northland and Finmark. They are also religious and more free from prejudice than we find in many places, so that the possibilities for the spread of the threefold message are good.

From the headquarters of the North Norway Conference, Trondheim, we have a journey of four days to Kirkenes. There we find ourselves close up against the Finnish border, and the events of the war are very near to the lives of the people. Brother O. Frenning has his field of labour there. First as a colporteur and then as an evangelist, he has carried on good work in that country. He and his faithful wife proclaim the truth and let the light shine out, not letting themselves be discouraged by the sometimes alarming tidings.

In the world's farthest north, but not our most distant city, Hammerfest, Brother J. A. Tillgren is at work. That is all we are able this year to send into Finmark. Otherwise we have no evangelistic efforts in progress till we come to

Trondheim, where the writer is preaching the message. In addition, we have two smaller efforts in the neighbourhood of Trondheim. Beyond those mentioned, the conference has two Bible-workers in its employ, and one departmental secretary. Altogether we have three ministers, two licentiates, of whom one has the departmental work (for the time, the work of treasurer as well), and two Bible-workers. The North Norway Conference has its field missionary secretary and colporteurs in common with the South Norway Conference, in whose territory the publishing house lies.

The conference has about 1,000 members divided among twenty-three churches. The population consists of hard-working people, who for the most part have to get their living out of the depths of the sea, or from occupations that are in some way associated with fish. The tithe per capita is therefore lower than in the South Norwegian Conference, but it was a joy to learn, in the last Union report, that the North Conference had been able to contribute to the work of the denomination outside North Norway, Kr.40,000; that is to say, the conference had been able to send to the Union and the Division Kr.40,000 more than they received.

Our field embraces the greater

part of Norway. The area of the whole country is 320,000 sq. kilometres, and the surface of North Norway covers 168,415 sq. kilometres. But while the south has the lesser half of Norway, it has two and a quarter millions of people to work among, while the North, spread out over a larger area, has only 773,720 inhabitants in its territory. When we remember also that the territory of the North Conference is much worse supplied with means of communication, so that practically all travel has to be done by ship, it can be seen how in other respects we are faced with greater difficulties than other conferences; indeed, I should not wonder if we had the most difficult field of all.

To the twenty-three churches in the North Conference is to be added a large number of isolated members. They dwell in the deep fjords, in steep valleys, and on islands reaching far into the North Sea and the Arctic Ocean.

For colporteurs North Norway is a trying field. So thinly populated is the country that often it means a day's march to go from one dwelling-place to another. In the territory of Finmark it is impossible to get the work of colportage done by the customary methods.

Up by the Finnish border is a large settlement of Finns. Many of these speak the Finnish language as well as the Norwegian. Then we have in Finmark many Samms, or Lapps. "Samms" is the name they give themselves, but "Lapps" is the Swedish designation.* They are a hardy people, living under primitive conditions. The majority of them live by keeping reindeer. From these they get almost everything, both food and clothing. These people constitute an uncultivated mission field. Individuals among them have accepted the truth, but only a very few. To do anything for them we must have an extra grant in aid. It is to be hoped that the General Conference, for the sake of the many other requests that come to them, will not overlook the Lapp mission.

North Norway is an interesting field of labour, with a responsive people. Other denominations have, in a higher degree than ourselves,

learned how to make use of the possibilities there to be found. We have done altogether too little and, on the ground of our too-small resources, have not bought up the favourable opportunity. It de-

mands workers with good health, people who can endure the severe winter and the long dark nights, also who are able to stand without too great strain the oft-times exhausting sea journeys.

lack of fuel has in some cases hindered our evangelistic work. Public assembly halls have had to close and others are so inadequately heated that people cannot endure remaining throughout a meeting. To make matters worse, Sweden has not for fifty years or more had such a siege of winter as this year.

Evangelism in Sweden

BY A. BLOMSTEDT

President, South Swedish Conference

WHILE "wars and rumours of war" have filled the air all around us during the last six months, we are thankful to God that He thus far has spared us the experience of an open conflict. During the past year we have worked both under omens of prosperity and omens of gloom and fear. In either case God has given us victories. To Him be all the glory!

A good year in soul winning in all of Sweden has just closed. One hundred and eleven souls took their stand for the truth in North Sweden and 123 in the southern conference, a total of 234 for the whole country. There were no large efforts, but wherever our workers preached the message for this time, souls were gathered out for the kingdom. In the North Conference some of the work was done in country districts and with success. One of the younger workers, a new licentiate, saw a company of sixteen people take their stand as a result of his meetings in such a district.

In southern Sweden the work has been almost wholly confined to the cities. Of these there are still several where we, perhaps, have never preached this truth. Among these are Alingsas, Falkenberg, Varberg, Falköping, Mariestad, Ulricehamn, and others. Still others have only an isolated sister or two as representatives of this cause. Surely "the harvest truly is plenteous, but the labourers are few" even in this "enlightened Sweden."

Since the outbreak of hostilities there have not been the same possibilities as before of gathering steady audiences into our meetings. A striking subject about the war and Bible prophecy may bring the people out once, but fails to interest most people enough for further

search after truth. Even our best evangelists find it necessary to continue a taxing advertising campaign to get new people out to fill, at least partly, the vacancies left by the mass of transient or irregular visitors.

Such seems to be the psychological effect of the war. People at large find themselves occupied wholly with their battle for bread and listening to or reading the latest news of war and all its tragedies. We are beginning to realize a little more the truth expressed by the Spirit of prophecy that "character is never formed in a crisis!" Instead it is being tested. The "war psychology" is sweeping the country. Even religious noncombatants relinquish with their leaders their former stand, or, perhaps, now show their real colours. Everything is in a stir of emotions aroused by the tragedies of war and by the possibility of their spread even to these tranquil shores. In such times few people have the ability to think soberly and trustingly obey God.

We must also acknowledge that

In spite of all this our evangelists are carrying on. One brother has had record audiences for a few meetings. Several of the workers are seeing a good interest and new people are already at this writing beginning to attend our Sabbath services. We are of good courage, for now is the time when we, according to *Early Writings*, "were filled with the Holy Ghost as we went forth and proclaimed the Sabbath more fully." The press of war and hard times is at the same time having a tendency to cause an open landslide to the side of the enemy. Thus the true followers of Jesus will be revealed, united and prepared for His coming.

"For such a time as this" we are burdened to plead with God for both the early and the latter rain, that we may proclaim with forceful clarity the truth "as it is in Jesus," showing the honest in heart the only way of salvation. Will you not, dear SURVEY family, also pray for us, as we here in Sweden seek to reach "the Lord's standard for His people" in life and in evangelism before probation closes?

Possibilities for Lay-Evangelism

BY ALFRED ANDERSON

FOR many years we have, in the North Swedish Conference, had our attention called to the question of lay-evangelism. We see and understand that this way of giving the last message to a lost world is very important. Our churches must be centres for soul winning. We have had many interesting experiences especially in Västerbotten which lies in the northern part of the conference. We have seen that there are great possibilities for a church to win souls if

only the members can be encouraged to make a start.

Nine years ago the Advent message came to Västerbotten. In two years about sixty persons took their stand with the Lord. When our minister moved to another place, our churchmembers resolved—with the first love burning in their hearts—that they would do what they could to bring others to the truth. Two of our brethren began to have cottage meetings in different places. The other mem-

Report of the Northern European Division

Name of Conference or Mission	No. Churches	Baptism and Vote	Apostasy	Death	Net Gain	Present Membership	Evangelistic Writers	Colporteurs	No. Sabbath-Schools	Membership	Average Attendance	Tithe	Tithe per capita	Sabbath-School Offerings	Weekly Offerings
1	2	3	4	5	6	7	8	9	10	11	12	13	14	15	16
N. E. Division							13								
Baltic Union	1	80	55	46	31	-29	5,223	63	19	99	5,366	3,864	\$ 1,819.50	0.06	283.01
British	2	94	151	190	41	-64	5,966	116	85	168	5,677	4,422	\$ 39,447.55	0.54	6,827.96
E. Nordic	3	97	40	12	13	15	5,469	70	53	197	4,777	3,507	\$ 20,011.50	0.30	3,883.19
Polish	4	161	4,427	63	...	249	4,964	3,888	\$
W. Nordic	5	141	45	30	25	-3	7,087	63	60	178	6,094	4,863	\$ 31,805.13	0.36	5,554.59
Union Totals, 4th qtr.	573	291	278	110	-81	28,172	388	217	891	26,878	20,544	\$ 93,083.68	0.36	16,548.75	7.53
French Equa. Miss.	6	1	28	8	...	5	223	310	\$ 31.70	0.11	16.98
Gold Coast Union	7	12	75	10	2	64	1,167	46	1	80	4,138	2,956	\$ 636.50	0.05	245.75
Kenya	8	37	531	79	9	424	5,855	274	12	247	16,152	15,739	\$ 670.60	0.01	659.17
Liberian Mission	9	2	14	...	2	12	104	17	...	18	279	222	\$ 134.50	0.20	47.31
Nigerian Union	10	28	92	2	8	84	3,153	129	18	180	15,021	12,142	\$ 898.10	0.04	546.78
Sierra Leone Miss.	11	13	501	26	...	32	1,674	973	\$ 223.40	0.04	84.45
Upper Nile Union	12	12	...	2	2	-3	421	37	2	41	1,051	828	\$ 236.90	0.06	110.70
Mission Totals, 3rd qtr.	105	712	93	23	581	11,229	537	33	603	38,538	33,170	\$ 2,831.70	0.03	1,711.14	...
Grand Totals, 4th qtr.	678	1,003	371	133	500	39,401	925	250	1,494	65,416	53,714	\$ 95,915.38	0.26	18,259.89	7.59

bers joined in praying for the work and many worked by selling papers and tracts. Every opportunity was used to talk with friends and relatives. After a few months there was such an interest that the conference president was sent for. As a result many souls were brought into the church. When I looked the figures over I was astonished to find that not less than forty-two persons have joined the church during the last seven years, an average of six souls each year. Last year has been very successful. We have baptized nine persons, and during the last week of prayer one man was converted and is now asking for baptism. That man had been persecuting his wife, who joined the church several years ago. One time when I was there visiting the church he came to the hall to take his wife away from the meeting. He was very angry. He threatened that she would be driven from home if she would not do as he said. This sister has lived out her religion in her home. One day she succeeded in persuading him to come to a meeting, and now he has given his heart to God. The church has used special means to reach the goal. They have "prayed him into heaven." They have found that this is the best way. They take one after another and go on every day with their prayers until the one they are praying for becomes converted, then they take the next. This is a wonderful way in which

every one can participate in lay-evangelism.

At present we have three brethren in other churches who are planning to begin with cottage meetings. We hope that many souls will be added to the church through their work. These churches also go on with their "lay-evangelism" by prayer. I am convinced that we shall see good results when we have our camp-meeting in August. The possibilities for lay-evangelism are to be found in every church; if there

are only a few old sisters they can win souls by prayer.

Here in Stockholm our members go into the homes and give Bible readings. We have started with the General Conference course and not less than ninety-five persons are enrolled. They take part in the course with real enthusiasm which we hope will give big results. We trust that they may be among the hundreds and thousands whom Sister White saw going into the homes to open the Word of God to men.

From the Home Missionary Front

BY S. E. JONASSON

THE blessings of God have abundantly rested upon the Home Missionary work in the East Nordic Union during the year 1939. Because of the war in Finland reports are only fragments of what really has been done there during these last three months. More than half our fellow-believers there have been evacuated from their homes since the beginning of October. However, we are rejoiced to see the results of the first three quarters in Finland and of the whole year in Sweden, in comparison with a year ago.

The will to partake in work has grown manifold. Fifty-one per cent of the members have reported. That is 748 members more than a year ago. The system of weekly

reporting has been welcomed with great interest at annual meetings and conventions. Every line of work in the Home Missionary Department shows advance. Stronger efforts have been put forth in soul-winning lines. The number of Bible readings is 4,282 more, in all 16,311. Believers have made 18,472 missionary visits, an increase of 1,767. Literature distributed reaches 214,615 pieces, or 31,449 more than for the same time in 1938. The missionary letters came up to a number of 7,121, which is 1,126 to the good over 1938. In these lines the increase was strong also the year before.

There are 1,408 more persons helped than the year before, in all 8,279. The number of free treat-

for the Quarter Ended December 31, 1939

Harvest Ingathering	Annual Offering	Miscellaneous Offerings	Week of Sacrifice	Young People's Offerings	Other Gifts	Big Week	Total Offerings	Total Offerings per capita	Percentage of Offerings to Tithe	Total Contributions for Home Missionary Work	Total Contributions for Local Church Work	Colporteur Sales
17	18	19	20	21	22	23	24	25	26	27	28	29
1,075.71	50.44	4.63	1,413.79	0.05	77.7	18.52	315.28	2,096.71
25,661.96	2,511.55	1.22	456.62	230.64	5,488.50	162.56	41,341.01	0.56	104.8	164.28	5,080.75	24,355.92
7,140.40	3,173.17	76.42	20.92	.12	2,915.47	2.33	17,212.02	0.26	86.0	1,604.43	660.05	8,861.19
11,527.98	5,654.43	266.89	59.01	801.16	2.36	23,873.95	0.27	75.1	803.97	1,956.82	16,378.07
45,406.05	11,389.59	77.64	744.43	289.77	9,205.13	171.88	83,840.77	0.32	90.1	2,591.20	8,012.90	51,691.89
.....	16.98	0.06	53.6
37.34	5.62	288.71	0.02	45.4	170.94
41.11	1,219.25	257.89	1.60	2,179.02	0.04	324.9	668.40
36.57	3.65	4.38	2.94	94.85	0.14	70.5
22.98	8.75	335.75	19.46	933.12	0.04	103.9	902.72
3.65	27.70	22.85	138.65	0.03	62.1
83.11	.24	84.12	31.27	309.44	0.08	130.6	45.96
224.16	1,231.89	715.46	78.12	3,960.77	0.04	139.9	1,788.02
45,630.21	12,621.48	77.64	1,459.89	289.77	9,205.13	250.00	87,801.54	0.24	91.5	2,591.20	8,012.90	53,479.91

ments is 3,911, thus 712 more than earlier. The number of garments given was 11,964, an increase of 1,141. Two new Dorcas Societies were started, so the number of them is now fifty-three. Our sisters seem to become more and more interested in this line. Victuals have been given to great amounts. The State trusts our help work and sustains it without hesitancy.

The missions campaigns have given good results. The Big Week brought Kr.10,506. In the Harvest Ingathering there came in Kr.122,803, or Kr.12,677 more than the year before. The goal was surpassed by some forty-five per cent. The Finland Swedish Conference reached its goal in four weeks and the Finnish and South Swedish Conferences in six. The North Swedish Conference had its goal as soon as the Mission School was able to take part in the Ingathering. In less than one week the family at Ekebyholm gathered nearly Kr.7,000. Two believers at Hultafors gathered Kr.1,200 each and another one Kr.900. The sanitarium as a whole harvested Kr.8,450. The health institutions in North Sweden gathered Kr.2,015. In one little church in the South Swedish Conference eleven out of twenty-eight members were honoured with six minute-man buttons. For a period of six years they had gathered at least fifty kroner a year.

In the Harvest Ingathering

Campaign it was seen that God has power to forward His work in difficult times. Ekebyholm and Hultafors had to do the Ingathering without permission to use their own motor-cars. Still they reached higher goals than ever before. Soon after the crisis had begun in Finland, a local secretary, at the close of a meeting which was held in a private home, appealed to the members for just a few efforts in order to reach a certain overflow in the Ingathering. Before we parted the overflow was reached. Russian bombs have destroyed the home where we were gathered, but the spirit of work and willingness to sacrifice for the kingdom of Christ cannot be broken by force.

A great number of conventions have been held. There is a live work in the Home Bible Study League this winter, working with our new Swedish tract-paper, *The Present Truth*. Already we have seen one soul won as a result of this effort, and some forty others are interested. Every year the department gathers a rich harvest of souls. In three years, just before 1939, more than 250 precious souls were reported. The result for 1939 was seventy-three. For this we thank God and pray for a still better harvest. We hope that the numerous evacuations in Finland will give results in souls won, as did the evacuation of the first Christians in Jerusalem.

M. V. Studies in the East Nordic Union

BY D. CARLSSON, Y. P. SECRETARY

THE Advent youth in our Union have inherited from their Viking fathers a spirit of eagerness and fearlessness when it comes to grappling with a task. This equipment needs at the present moment to be brought into practical use in the Master's service. The progress made in study courses has shown that many have made good use of this inherited quality, and that it has proved a blessing for themselves and for others.

The great variation in language

between Finland and Sweden has naturally produced certain difficulties to effective co-operation in the Union in respect of studies. However, this hindrance has not been so great as one might suppose. Especially have the Finnish youth, through visiting the mission school and other institutions in Sweden, commendably done their part toward overcoming the difficulties in respect of language. Moreover, the Young People's Congresses, in establishing intim-

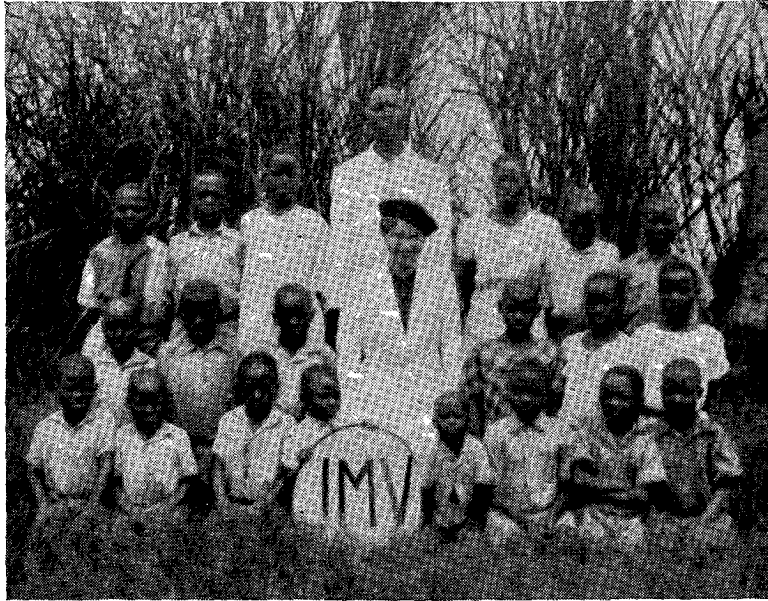
ate relations, have made the bond stronger between the two peoples, and also made possible a more general profit through the means of the study courses.

Of course, when compared with the English-speaking Unions, our Union is at a disadvantage. We are often sorely handicapped in the matter of special literature and handbooks. It is necessarily a very expensive proposition to publish literature for about 800 young people who are divided into two language groups. However, it is encouraging to see with what zeal and energy the plans looking toward practical progress are embraced.

It was with specially lively interest that the young people's study circles were taken up. On account of certain difficulties connected with the making available of this course, there came a halt in the work. During this pause the Progressive Courses for the juniors were set in operation. It was just the work that our people, youth, and juniors, were waiting for. We had recognized for a long time the crying need that the junior army should come to our help. When therefore this work made its appearance, many took hold quickly. Fathers and mothers forty years of age, children and youth, conference presidents and mission workers began goal-mindedly to work, that they might in due course become trained Master Comrades. In our Union we have not yet as many as we wish with this qualification, but, judging from the indications, this year will bring with it many investiture services for those who have prepared themselves to receive the grade.

Of those who studied at the mission schools or who, in the

churches, received the progressive training, many have attempted to put into practice what they have learned. In this way youth have in a number of places carried on lay preaching. Some have tried to gather juniors together to study with them in the junior classes, and youth in the M.V. societies. In addition to this a part of the youth have begun systematic literature work, both by post and from



Miss Saks, leader of J.M.V. at Kireka.

house to house. This work has been taken up with great interest, and forms one branch of the Win One Soul movement which now is going forward strongly in our Union.

Notwithstanding earlier favourable economic conditions, and the remarkably large number of literature evangelists who earned scholarships, there still remain many of our youth who have not yet been able to attend our mission schools. In order to help these young people if possible in some way, it is our plan as soon as possible to establish correspondence courses in certain subjects. These courses, together with the Young People's Study circles, or the Advanced Study and Service League, will in some measure serve to meet the thirst for knowledge which is characteristic of these youth.

Through the war which Finland is now fighting direct work among

the Finnish Advent youth is almost paralysed. Since most of the young people dwell in the larger cities, and these are now evacuated, the organized M.V. work is largely broken up. Certainly these are working faithfully for their Saviour in the places where they now are, but the conditions are entirely changed when the fatherland in great extremity lays demands on time and strength. The experience through which our young people are going during these months in Finland, and the loyalty they manifest, show that the Advent youth can be depended on. We thank God for this. It says to us that God's help is never far away, and that the Advent youth have a place to fill not only in the work of God, but also in the community when it comes to neighbourly help and contributing to the public good.

We look to the future with tranquil assurance. We believe that God will still watch over and forward the plans that are laid for the continuous development of the youth and the salvation of souls.

SISTER SAKS, who went from Estonia to Uganda to take up duty there as secretary-treasurer, has found some additional work already. The photo shows her surrounded by members of the J.M.V., Kireka society, of which she is the leader.

The Advent Survey

Organ of
The Northern European Division of
the General Conference of S.D.A.

Editor: W. T. Bartlett

Published monthly on the 25th day of
the month. Price 2/6 per annum.
Subscriptions to be sent to the Division
Office, 41 Hazel Gardens, Edg-
ware, Middlesex, England.

Annual Statistical Report

Northern European Division
of the General Conference
of Seventh-Day Adventists

Containing Statistical, Financial, and
Institutional Reports for the Year Ended
December 31, 1939

COMPILED BY A. SCHMIDT, STATISTICAL SECRETARY

The Annual Reports

THE year 1939 brought to the Northern European Division two devastating wars involving directly three of our countries in Europe and indirectly all our territory. But in spite of wars and rumours of wars we are glad to note that the Lord's work has been onward in almost every department.

The year has marked a good advance in both the home and mission fields. These cold figures may seem lifeless and dull, but they record the results of days and weeks of faithful service on the part of our 624 evangelical, office, and mission workers, 301 colporteurs, 401 teachers, 795 workers in medical institutions, and 112 publishing house employees. Eternity alone will reveal the full fruitage of these 2,223 workers in the Northern European Division.

We are glad to report that associated with these workers is a faithful constituency of 39,401 believers in the Advent message who are giving their whole-hearted support to the cause of God. During 1939 they paid into the treasury \$371,817.18 in tithes and \$234,524.27 in mission offerings. This total of \$606,341.45 represents an average of \$15.39 for every believer in the Division both at home and in the mission fields.

Our Sabbath-school membership now stands at 65,416, which is a gain of 415 members over 1938. In offerings our Sabbath-schools gave \$75,995.41 to missions or an average of 3.7 cents per week per capita.

The net increase in church membership in 1939 was 1,528, but this includes only two quarters' report

for Poland and three quarters for the mission fields. Full reports would no doubt have brought this figure up to 2,000. The mission fields still lead in membership gains, showing a net increase of 11.1 per cent, while the home unions show only 1.4 per cent increase.

We face another year with courage in spite of wars and perplexity.

We have greatly appreciated the whole-hearted co-operation and the willing service of all our workers and lay brethren during the past year, and we take this opportunity of expressing to them our sincere thanks. Some day the last report will be compiled and we will then be called home.

J. I. ROBISON, *Secretary*.

Membership Summary for Seven Years

	1933	1934	1935	1936	1937	1938	1939
Unions	23,882	24,635	25,639	26,222	26,735	27,771	28,172
Net Gain	802	753	1,004	583	513	1,036*	401*
% of Gain	3.4%	3.1%	4.1%	2.2%	1.9%	3.8%	1.4%
Missions	5,783	6,155	6,784	7,706	8,895	10,102	11,229
Net Gain	585	372	629	922	1,189	1,207	1,127
% of Gain	11.2%	6.4%	10.2%	13.6%	15.4%	13.5%	11.1%
Division	29,665	30,790	32,423	33,928	35,630	37,873	39,401
Net Gain	1,387	1,125	1,633	1,505	1,702	2,243	1,528
% of Gain	4.7%	3.7%	5.3%	4.6%	5%	6.3%	4%

* Listed in gains and losses in this report are 669 members transferred to Polish Union from Central Europe in 1938 and 172 members from Lithuania transferred back to Central Europe in 1939.

Report of Church Schools for the Year 1939

PLACE	No. Teachers	Enrollment	Building	Estimated Value of Equipment	Expense of Annual Maintenance
British Union					
Plymouth, North Road	2	32	\$ 243.50	\$ 1,498.76
Stanborough Park, Watford, Herts.	3	65	713.45	2,566.12
Walthamstow, Grove Road	1	30	487.00	1,475.57
East Nordic Union					
Stockholm, Tunnelgatan 25, Sweden	3	28	403.23	1,897.47
West Nordic Union					
Aarhus, Norre Alle 30, Denmark	2	26	268.82	1,129.03
Copenhagen, Suomisvej 5, Denmark	1	15	134.41	806.45
Frederikshavn, Haabets Alle, Denmark	1	13	161.29	510.75
Iceland, Westmann Islands	2	60	666.66	166.66	654.44
Jerslev, Friskolen, Denmark	1	19	134.41	268.82
Narum, Konkordievej, Denmark	2	22	268.82	1,236.66
Onsrud skole, Algarheim, Norway	1	4	161.29
Oslo, Kingosgt 1, Norway	2	40	2,016.12
Vejlefirrd Højskole, Denmark	2	13	645.16
Totals 1939	23	387	\$ 666.66	2,981.59	14,863.54
" 1938	24	364	\$ 888.88	2,854.81	14,964.98
" 1937	25	377	\$ 888.88	3,230.81	14,094.89
" 1936	24	401	\$ 888.88	3,113.16	14,269.18

**Publishing Department of the Northern European Division
Report of Colporteur Work for Year 1939**

	Book Sales Including Helps				Sales of Magazines				Grand Totals in Doll.	T'l Value B'ks and Mags. D't'd	Total Sales 1938
	Aver. No. of Colp's	No. of Hours	Value of Books and Helps	No. of Sub'ns	No. of Single Copies	Value of Sub'ns and Singles	Value of Mag. Sales				
Baltic Union											
Estonian Conference	8	14,007	EKr. 6,888.28	3,241	7,720	EKr. 6,162.30	EKr. 13,050.58	\$ 3,530.91	Ekr. 13,570.37	\$10,399.61	
Latvian Conference	9	12,495	Ls. 12,229.00	2,795	11,756	Ls. 2,573.00	Ls. 14,802.00	2,883.48	Ls. 13,754.00	2,454.10	
Lithuanian Mission	5	8,383	Lt. 2,893.60	140	12,077	Lt. 11,567.05	Lt. 14,460.65	2,428.37	Lt. 14,460.65	1,636.68	
Totals	22	34,885	Sh. 19,432.71	6,176	31,553	Sh. 16,882.66	Sh. 36,315.37	8,842.76	Sh. 36,054.41	14,490.39	
British Union											
South England Conference	34	48,151	Sh. 131,520.81	Sh. 29,969.22	Sh. 161,490.03	39,322.82	Sh. 153,931.30	46,191.24	
North England Conference	35	50,656	Sh. 109,590.32	Sh. 45,776.56	Sh. 155,366.88	37,831.83	Sh. 142,366.98	47,888.84	
Welsh Mission	4	5,882	Sh. 12,244.50	Sh. 8,992.49	Sh. 21,236.99	5,171.21	Sh. 19,050.97	6,373.91	
Scottish Mission	4	6,116	Sh. 20,123.66	Sh. 889.91	Sh. 21,013.57	5,116.80	Sh. 17,716.57	5,651.07	
Irish Mission	2	4,121	Sh. 11,852.66	Sh. 1,161.14	Sh. 13,013.80	3,168.86	Sh. 10,417.13	2,605.97	
Totals	79	114,926	Sh. 285,331.95	Sh. 86,789.32	Sh. 372,121.27	90,611.52	Sh. 343,482.95	108,711.03	
East Nordic Union											
South Swedish Conference	19	24,590	SKr. 101,465.90	1,698	SKr. 13,011.46	SKr. 114,477.36	28,589.99	SKr. 103,094.98	29,017.68	
North " "	18	25,934	SKr. 81,121.68	2,581	SKr. 16,963.58	SKr. 98,085.26	24,496.18	SKr. 79,602.44	30,764.14	
Finnish Swedish " "	2	3,147	FMk. 56,159.00	494	FMk. 25,026.00	FMk. 81,185.00	1,749.41	FMk. 79,979.00	2,954.85	
Finnish " "	42	54,358	FMk. 237,784.00	20,631	FMk. 888,700.00	FMk. 1,126,484.00	24,291.28	FMk. 1,230,194.00	24,532.99	
Totals	81	108,029	Sh. 213,351.95	25,404	Sh. 1,111,604.44	Sh. 324,958.39	79,126.86	Sh. 303,431.73	87,269.66	
Polish Union (Seven months only)											
East Polish Conference	3	4,564	Zl. 2,288.00	138	2,713	Zl. 1,050.00	Zl. 3,338.00	625.22	Zl. 2,518.00	1,536.97	
North " "	3	2,500	Zl. 2,335.00	22	2,283	Zl. 853.00	Zl. 3,188.00	597.12	Zl. 1,890.00	899.90	
Silesian " "	6	9,007	Zl. 6,889.00	1,570	7,720	Zl. 10,012.00	Zl. 16,991.00	3,165.67	Zl. 11,593.00	3,417.23	
South Polish " "	3	2,963	Zl. 250.00	29	3,206	Zl. 1,488.00	Zl. 1,738.00	325.55	Zl. 1,643.00	1,099.86	
West " "	6	7,977	Zl. 769.00	58	27,265	Zl. 10,606.00	Zl. 11,375.00	2,130.62	Zl. 11,578.00	2,999.50	
Totals	21	27,011	Sh. 9,639.33	1,817	43,187	Sh. 18,468.17	Sh. 28,107.50	6,844.18	Sh. 22,632.26	9,953.46	
West Nordic Union											
East Danish Conference	12	11,255	DKr. 34,995.07	2,388	DKr. 19,104.00	DKr. 54,099.07	11,761.69	DKr. 42,332.88	16,161.40	
West " "	21	25,597	DKr. 65,449.93	3,670	DKr. 29,360.00	DKr. 94,809.93	20,612.68	DKr. 85,492.02	17,478.41	
South Norweg'n Conf'ce	25	34,014	NKr. 117,796.60	5,788	NKr. 46,304.00	NKr. 164,100.60	39,958.49	NKr. 144,786.73	44,531.41	
North " "	10	14,825	NKr. 45,629.51	2,476	NKr. 19,808.00	NKr. 65,437.51	15,934.02	NKr. 59,951.51	16,998.83	
Iceland-Faroes " "	1	2,493	IKr. 8,188.83	IKr. 8,188.83	IKr. 1,424.25	1KR.	8,188.83	2,429.80	
Totals	69	88,184	Sh. 258,958.27	14,322	Sh. 109,383.37	Sh. 368,341.64	89,691.13	Sh. 324,716.64	97,559.65	
Fr. Cameroons Mission	Sh.	Sh.	Sh.	Sh.	
Gold Coast Union	1	Sh. 3,598.33	Sh. 617.75	Sh. 4,216.08	1,026.62	Sh. 4,216.08	1,020.47	
Kenya Union	8	21,959	Sh. 5,235.00	Sh.	Sh. 5,235.00	1,274.71	Sh. 5,235.00	600.96	
Liberian Mission	Sh.	Sh.	Sh.	Sh.	
Nigerian Union											
South Western Mission	1	Sh. 1,909.24	Sh.	Sh. 1,909.24	464.89	Sh. 1,909.24	789.67	
South Eastern " "	14	Sh. 15,389.49	Sh. 51.00	Sh. 15,390.49	3,747.57	Sh. 15,390.49	2,947.26	
Totals	15	Sh. 17,248.73	Sh. 51.00	Sh. 17,299.73	4,212.46	Sh. 17,299.73	3,736.93	
Sierra Leone Mission	Sh.	Sh.	Sh.	Sh.	
Upper Nile Union	5	10,305	Sh. 1,756.00	Sh.	Sh. 1,756.00	427.58	Sh. 1,756.00	406.55	
Grand Totals for 1939	301	405,299	Sh. 814,552.27	47,719	74,740	Sh. 343,796.71	Sh. 1,158,348.98	282,057.82	Sh. 1,058,824.80	323,789.10	
Grand Totals for 1938	326	459,669	Sh. 936,078.23	60,596	96,178	Sh. 393,651.10	Sh. 1,329,729.33	323,789.10	Sh. 1,208,071.62	

Report of the Publishing Houses for the year 1939

NAME	ADDRESS	Book Sales	Periodical Sales	Total Value Literature Sold	Buildings	Employees	Periodicals	Languages
1. The Advent Press	Gendia, P.O. Kisumu, Kenya E. Africa	\$ 2,640.45	2,640.45	1	9	4
2. The Advent Press	P.O. Box 19, Ibadan, Nigeria W. Af.	\$ 464.89	464.89	2	4	2
3. Advent Publishing Ass'n	Waterloo, Sierra Leone, West Africa	\$ 146.10	146.10	292.20
4. Aikain Vartija	Annegatan 7, Helsingfors, Finland	\$ 12,105.26	43,361.34	55,466.60	1	12	4	1
5.*Dansk Bogforlag	Suomisvej 5, Copenhagen, V. Denmark	\$ 29,000.00	23,000.00	52,000.00	5	4	1
6. Estonian Publishing House	Merepuistee 14a, Tallinn, Estonia	\$ 2,806.46	6,331.70	9,138.16	4	3	1
7. Gold Coast Depository	P.O. Box 45, Bekwai, via Takoradi, Gold Coast, West Africa	\$ 1,026.62	1,026.62	2	2	1
8. Iceland Publish. House	P.O. Box 262, Reykjavik, Iceland	\$ 2,842.12	78.88	2,921.00	1	1	2	1
9. Latvian Publish. House	Brivibas iela 11, Riga, Latvia	\$ 4,720.08	1,541.99	6,262.07	2	1	2
10. Lithuanian Depository	Kestucio 9, Kaunas, Lithuania	\$ 763.16	317.60	1,080.76	2
11. Polish Publish. House	Ul. Turecka 1, Warsaw, Poland	\$ 6,844.18	6,844.18	3	6	3
12. Scandinavian Pub. Hse.	Akersgaten 74, Oslo, Norway	\$ 43,032.94	34,499.78	77,532.72	19	4	3
13. S.E. Nigerian Depository	P.O. Box 41, Aba, S. Nigeria, W. Af.	\$ 3,747.57	3,747.57
14. Stanborough Press Ltd.	Stanborough Park, Watford, England	\$ 99,254.62	41,067.41	140,322.03	1	39	5	1
15. Swedish Publish. House	Tunnelgatan 25, Stockholm, Sweden	\$ 52,570.43	24,969.89	77,540.32	11	5	1
*No report 17 months only	Totals for 1939	\$ 261,964.88	175,314.69	437,279.57	8	112	34	22
	Totals for 1938	\$ 258,269.20	168,651.26	426,920.46	6	115	36	22
	Totals for 1937	\$ 261,381.26	151,090.83	412,472.09	4	110	33	25
	Totals for 1936	\$ 272,380.17	131,799.32	404,179.49	6	106	32	26

Statistical Report of the Northern European Division for the Year Ended December 31, 1939

NAME OF CONFERENCE OR MISSION	No. of Churches	Membership of previous report	GAINS					LOSSES										Total losses	Net gain	Present Membership	Ordained Minist's	Licensed Minist's	Miss'y Credentials	Other Workers	Colporteurs	Total Workers	No. Sabbath-Schools	Membership	Average Attendance						
			By baptism	By vote	By letter from foreign fields	By let. from other fields in Union	Total gains	By apostasy	By death	By letter to America	By letter to other foreign fields	By letter to other fields in Union	1	2	3	4	5													6	7	8	9	10	11
Northern European Division																																			
Baltic Union Conference																																			
Estonian Conference	1	39	1,955	141	30		15	186	53	38		7	28	126	60	2,015	7	6	9	3	8	33	56	1,977	1,516	1									
Latvian	2	28	2,971	141	23	171	8	343	86	42		170	1	299	44	3,015	16	3	7	7	9	42	30	3,199	2,216	2									
Lithuanian Mission	3	13	378	7		4		11	16	5		175		196	-185	193	1	1	2	1	5	10	13	190	132	3									
Totals	80	5,304	289	53	175	23	540	155	85	352	29	621	-81	5,223	24	10	18	11	22	85	99	5,366	3,864												
British Union Conference																																			
South England Conf.	4	43	3,108	214	29	28	46	317	161	63	10	16	45	295	22	3,130	13	20	11	3	84	81	68	2,917	2,208	4									
North England	5	34	1,856	145	29	5	47	226	143	41	9	9	36	238	-12	1,844	10	14	10	2	35	71	58	1,763	1,424	5									
Welsh Mission	6	9	466	16	6		4	26	7	10	1		10	28	-2	464	4	2	2		4	12	23	512	384	6									
Scottish	7	5	288	22	9	1	5	37	8	3			10	21	16	304	3	2	3		4	12	10	252	214	7									
Irish Mission	8	3	203	19	2	3	8	32	4	4		3		11	21	224	3	2	2		2	9	9	283	192	8									
Totals	94	5,921	416	75	37	110	638	323	121	20	28	101	593	45	5,966	36	40	30	10	1	79	195	168	5,677	4,422										
East Nordic Union Conf.																																			
North Swedish Conf.	9	28	1,477	98	13	8	11	130	38	28		6	19	91	29	1,516	5	4	6	3	18	36	53	1,375	998	9									
South Swedish	10	26	1,317	116	7	6	20	149	44	16		2	11	73	76	1,393	8	3	1	19	38	50	1,300	1,122	10										
Finland Swedish Conf.	11	14	452	20	1			21	4	3			1	8	13	465	2	1	3	1	2	9	24	348	111	11									
Finland Conference	12	29	2,064	87	23			110	57	18		1	3	79	31	2,095	6	3	10	1	42	62	70	1,754	1,276	12									
Totals	97	5,310	321	44	14	31	410	143	65	9	34	251	159	5,469	24	12	17	7	81	151	197	4,777	3,507												
Polish Union Conference																																			
East Polish Conf.	13	54	1,343	106	2		21	129	13	9	6		23	51	78	1,421	3	3	4		3	13	54	1,699	1,400	13									
Silesian	14	51	1,650	65	7	11	53	136	16	14		28	53	111	25	1,675	8	2	4		6	20	63	1,897	1,345	14									
South Polish	15	20	411	32	4	5	10	48	8	2		5	14	29	19	430	3	2	5		3	13	20	445	321	15									
West Polish	16	27	668	28	4	1	28	61	1	6		3	17	27	34	702	4	5	7		6	22	97	731	630	16									
North Polish	17	9	196	8			13	21					18	18	3	199	1	1	2	1	3	8	15	192	192	17									
Totals†	161	4,268	239	14	17	125	395	38	31	6	36	125	236	159	4,427	21	16	25	1	21	84	249	4,964	3,888											
West Nordic Union Conf.																																			
East Danish Conf.	18	28	1,671	77	16	10	48	151	58	23		6	41	128	23	1,694	5	3	4	2	12	26	38	1,461	1,275	18									
West	19	37	1,502	83	17	12	21	133	28	24	2	4	46	104	29	1,531	5	2	5	1	21	34	46	1,387	1,051	19									
South Norway Conf.	20	40	2,363	115	17	3	24	159	45	19		1	10	75	84	2,447	9	2	7	2	25	45	47	2,158	1,569	20									
North	21	28	1,001	20	2		9	31	13	18		6	29	66	-35	966	3	2	1	1	10	17	38	743	678	21									
Iceland-Faroes	22	8	431	18	2	1		21		3			3	18	449	1	4				1	6	9	345	290	22									
Totals	141	6,968	313	54	26	102	495	144	87	2	17	126	376	119	7,087	24	13	19	7	69	132	178	6,094	4,863											
Tot. for Unions Year 1939	578	27,771	1,578	240	269	391	2,478	803	389	28	442	415	2,077	401	28,172	134	92	125	37	272	660	891	26,878	20,544											
Tot. for Unions Year 1938	610	26,735	1,554	235	736	531	3,056	858	447	31	132	552	2,020	1,036	27,771	142	69	145	33	309	698	816	27,155	20,269											
Tot. for Unions Year 1937	584	26,222	1,451	214	61	637	2,363	725	381	36	61	647	1,850	513	26,785	127	69	137	29	306	668	825	25,432	18,653											
Tot. for Unions Year 1936	584	25,639	1,583	234	68	608	2,493	825	385	35	58	607	1,910	583	26,222	127	61	135	38	305	666	819	25,162	18,706											
French Equa'l Afr'n Mis.	23	1	25	4				4	1					1	3	28			1	1	6		8	5	223	310	23								
Gold Coast Union	24	12	1,096	97			11	108	23	6			8	37	71	1,167	5	4	9	28	1	47	80	4,138	2,956	24									
Kenya Union																																			
West Kenya Mission	25	25	4,071	328	28		91	447	155	21			50	226	221	4,292	6	15	10	134		165	122	9,292	7,693	25									
South	26	8	1,211	186	7		9	202	42	2			51	95	107	1,318	3	6	3	64		76	94	5,707	7,078	26									
Central	27	2	147	14			8	22	11	1			5	17	5	152	2		3	6</															

Report of the Northern European Division

		Tithe	Tithe (weekly per capita)	Total Offerings (Columns 29-33)	Sabbath-School Offerings 12 Sabbaths	13th Sabbath Offerings	Weekly Offerings	Harvest Ingathering	Annual Offering
		26	27	28	29	30	31	32	33
Baltic Union Conference									
Estonian Conference	1	E. Kr. 34,102.10	0.34	14,325.12	5,148.61	778.01		6,298.28	43.40
Latvian	2	Ls.							
Lithuanian Mission	3	Lt. 9,229.16	0.48	4,273.12	1,173.86	212.33	22.00	1,927.72	316.94
Totals		£ 2,212 16 8	0 48	943 3 11	326 10 2	50 10 10	15 2	416 7 8	13 6 9
		\$ 10 776.30	0.09	4,593.32	1,590.07	246.14	3.68	2,027.81	64.95
British Union Conference									
South England Conference	4	£ 18,193 6 3	2 5	8,862 9 5	2,223 2 5	876 19 8		4,803 12 1	330 3 1
North England	5	£ 9,141 8 10	1 11	5,541 9 11	1,280 13 6	342 3 9		3,536 18 8	103 1 11
Welsh Mission	6	£ 1,867 17 11	1 7	1,524 0 4	288 1 8	104 18 0		1,066 0 10	33 6 11
Scottish	7	£ 1,405 7 4	1 11½	1,003 10 6	209 19 11	73 18 3		662 5 6	18 1 0
Irish	8	£ 908 6 7	2 2	882 15 1	165 14 10	40 7 7		575 0 1	44 6 5
Totals		£ 31,740 10 8	2 2	18,896 5 3	4,167 12 4	1,438 7 3		10,693 17 2	528 19 4
		\$ 154,576.15	0.53	92,024.84	20,296.28	7,004.83		52,079.14	2,576.07
East Nordic Union Conference									
North Swedish	9	S. Kr.		79,722.15	17,020.83	5,599.47		42,707.85	4,998.49
South	10	S. Kr. 114,198.75	1.75	93,878.84	17,398.45	7,223.57		50,724.96	4,308.80
Finland Swedish	11	F. Mk. 242,489.65	10.84	195,545.95	38,896.30	15,400.00		115,135.90	9,006.50
Finland	12	F. Mk. 741,374.35	7.12	459,043.70	124,047.40	29,296.25		226,385.90	36,168.05
Totals		S. Kr. 302,808.99	1.14	230,081.10	48,478.62	16,679.64		122,900.37	13,204.99
		\$ 75,624.90	0.29	57,461.30	12,107.22	4,165.64		30,693.59	3,297.85
Polish Union Conference									
East Polish Conference	13	Zl. 6,539.83	0.17	2,831.23	1,815.29	310.88		14.19	21.65
Silesian	14	Zl. 35,712.00	1.24	10,346.43	6,810.92	1,089.53		115.45	42.21
South Polish	15	Zl. 3,804.87	0.34	1,434.14	848.41	138.21		2.70	
West Polish	16	Zl. 22,165.17	1.13	6,273.99	3,440.79	617.67		217.00	29.45
North Polish	17	Zl. 2,519.90	0.48	1,137.87	550.04	61.67		33.70	2.00
Totals (7 months only)		Zl. 70,741.77	0.69	22,023.66	13,465.45	2,217.96		383.04	95.31
		\$ 13,250.80	0.13	4,125.14	2,522.14	415.44		71.74	17.82
West Nordic Union Conference									
East Danish Conference	18	N. Kr. 138,036.67	1.56	72,663.44	23,147.71	7,797.52		26,077.60	8,910.17
West	19	D. Kr. 102,270.09	1.30	64,879.76	19,038.70	5,746.57	17.50	27,576.98	6,879.81
South Norway Conference	20	N. Kr. 169,670.86	1.39	90,471.18	22,893.43	7,151.14	32.16	47,025.30	8,170.67
North	21	N. Kr. 42,695.77	0.88	27,508.09	7,089.53	1,695.63	16.24	15,370.00	1,910.33
Iceland-Faroes	22	I. Kr. 17,189.20	0.83	4,787.42	2,533.96	698.74		1,108.16	438.62
Totals		N. Kr. 444,428.21	1.24	244,474.20	69,537.40	21,460.66	64.00	111,206.43	24,100.15
		\$ 108,218.33	0.30	59,529.55	16,932.34	5,225.67	15.58	27,078.82	5,868.41
Totals for Unions for year 1939		\$ 362,446.48	0.31	217,734.15	53,448.05	17,057.72	19.26	111,951.10	11,825.10
French Equatorial Af'n Mis.									
	23	£ 22 19 2	0 6½	13 3 10	7 12 3	1 0 6			
		\$ 111.80	0.13	64.24	37.08	4.98			
Gold Coast Union									
	24	£ 447 16 0	0 3	215 1 5	107 4 4	38 17 6		18 10 4	1 15 5
		\$ 2,180.70	0.06	1,047.39	522.14	189.32		90.18	8.62
Kenya Union									
West Kenya Mission	25	£ 497 17 6		72 13 6	187 17 7	30 9 9		11 4 9	59 12 1
South	26	£		315 12 8	97 17 7	109 18 0		2 15 0	200 10 0
Central	27	£		484 14 4	93 15 8	6 19 1		1 9 6	4 11 4
N.W.	28	£		38 17 0	23 18 0	7 2 2		18 4	7
Coast Mission	29	£		10 12 9	7 2 2	3 13 4		17 10	1 11
Totals		£ 497 17 6	0 0½	889 18 0	330 7 8	151 18 6		16 7 1	264 15 11
		\$ 2,424.50	0.01	4,333.82	1,608.96	739.87		79.65	1,289.56
Liberian Mission									
	30	£ 78 2 6	0 8½	47 0 7	18 19 10			18 17 8	2 3 1
		\$ 356.10	0.18	229.04	92.50			91.97	10.49
Nigerian Union									
Southwest Nigerian Mission	31	£ 129 16 8		105 0 2	73 5 11	13 0 7		1 5 1	3 7 11
Northwest	32	£ 57 11 8	0 1½	93 14 4	63 12 3	9 4 0		14 10	5 14 5
Southeast	33	£ 79 10 0	0 1½	318 3 3	162 0 5	19 1 6		93 15 4	7 8 1
Northeast	34	£ 306 7 6	0 1½	12 7 9	4 15 5	2 3 3		12 10	
Totals		£ 587 9 2	0 1½	529 5 6	303 14 0	43 9 4		96 8 1	16 10 5
		\$ 2,860.90	0.04	2,577.56	1,479.02	211.68		469.48	80.46
Sierra Leone Mission									
	35	£ 138 15 0	0 2½	117 1 2	42 15 9	25 12 6		17 7 8	6 15 3
		\$ 675.70	0.05	570.07	208.36	124.82		84.65	32.93
Upper Nile Union									
Central Uganda Mission	36	£ 156 5 0	0 3½	136 4 6	49 0 1	6 12 5		49 11 9	14 3
Eastern Uganda Mission	37	£							
Nchwanga Mis'n Station	38	£							
Totals		£ 156 5 0	0 3½	136 4 6	49 0 1	6 12 5		49 11 9	14 3
		\$ 761.00	0.07	663.41	238.66	32.25		241.48	3.47
Totals for Missions (three quarters only)		£ 1,924 4 4	0 1½	1,947 15 0	859 13 11	267 10 9		217 2 7	292 14 4
		\$ 9,370.70	0.03	9,485.53	4,186.72	1,302.92		1,057.41	1,425.53

for the Year Ended December 31, 1939

Miscellaneous Offerings	Week of Sacrifice	Young People's Offerings	Other Gifts	Big Week Missions Extension Fund	Total Offerings Including Big Week	Total Offerings Weekly per Capita	Percentage of Offerings to Tithe	Total Contributions for Home Missionary Work	Total Contributions for Local Church Work	Colporteur Sales	
34	35	36	37	38	39	40	41	42	43	44	
.....	1,998.95	57.87	2,279.15	16,604.27	0.17	48.7	666.73	3,787.46	13,050.58	1
.....	602.96	17.31	221.30	4,494.42	0.23	48.7	142.09	14,802.00	2
.....	131 17 1	3 16 3	134 4 11	1,077 8 10	0 2 $\frac{1}{2}$	48.7	36 10 2	210 6 0	1,815 15 5	3
.....	642.11	18.56	653.79	5,247.11	0.04	177.80	1,024.19	8,842.76	
5 0 0	1,077 0 0	1,082 0 0	
26 10 0	449 1 6	100 10 8	52 10 0	231 6 11	9,093 16 4	1 2 $\frac{1}{2}$	50.0	99 15 5	2,814 17 5	8,074 10 1	4
.....	176 10 6	52 1 7	100 15 5	5,642 5 4	1 2 $\frac{1}{2}$	61.7	31 14 11	999 2 7	7,768 6 11	5
.....	26 16 8	4 16 3	22 0 6	1,546 0 10	1 3 $\frac{1}{2}$	82.8	52 4 7	219 0 11	1,061 17 0	6
4 4 0	29 12 10	5 9 0	23 1 0	1,026 11 6	1 5	73.0	1 8	176 7 3	1,050 13 7	7
5 0 0	49 14 5	7 6 9	32 13 0	915 8 1	2 2 $\frac{1}{2}$	100.8	4 15 1	122 10 0	650 13 10	8
35 19 0	731 15 11	170 4 3	1,129 10 0	409 16 10	19,306 2 1	1 3 $\frac{1}{2}$	69.8	188 11 8	4,331 18 2	18,606 1 5	
175.08	3,563.83	828.93	5,500.68	1,995.93	94,020.77	0.32	918.40	21,096.40	90,611.52	
621.00	4,232.64	92.24	4,449.63	1,818.44	81,540.59	1.11	78.6	14,423.23	6,937.28	98,085.26	9
198.32	6,496.25	299.37	7,229.12	1,873.14	95,751.98	1.47	83.8	12,840.99	7,679.67	114,477.36	10
1,000.00	15,139.65	967.60	7,390.25	202,936.20	9.08	83.7	1,021.65	38,219.15	81,185.00	11
50.00	40,533.45	2,562.65	21,966.70	481,010.40	4.62	64.9	27,691.00	18,090.50	1,126,484.00	12
904.97	15,532.54	696.22	11,678.75	6,224.60	236,305.70	0.89	78.0	29,854.49	19,544.80	294,351.92	
227.23	3,879.17	173.89	2,916.71	1,554.53	59,015.83	0.22	8,025.40	5,253.98	79,126.86	
.....	604.97	64.25	809.13	3,640.36	0.10	55.7	178.03	210.30	3,338.00	13
.....	2,167.75	120.57	1,895.28	12,241.71	0.42	34.3	455.06	3,825.29	16,901.00	14
.....	411.86	32.96	476.79	1,910.93	0.17	50.2	20.85	5.38	1,738.00	15
.....	1,851.32	117.76	1,353.86	7,627.85	0.39	34.4	324.40	2,810.53	11,375.00	16
210.00	271.24	9.22	240.04	1,377.91	0.26	54.7	18.84	173.16	3,188.00	17
210.00	5,307 14	344.76	4,775.10	26,798.76	0.26	37.9	997.18	6,524.66	36,540.00	
39.33	994 08	64.59	894.41	5,019.55	0.05	111.67	730.64	6,844.18	
250.00	5,682.72	466.56	331.16	2,808.67	75,472.11	0.85	54.7	8,216.79	9,555.69	54,099.07	18
100.00	3,468.35	426.16	2,125.69	2,611.94	67,491.70	0.86	66.0	593.44	3,803.30	94,903.93	19
.....	3,865.89	564.76	767.83	2,109.94	92,581.12	0.76	54.6	3,712.06	7,420.00	164,100.60	20
15.00	841.27	141.31	428.73	747.84	28,255.93	0.58	66.2	34.05	2,084.18	65,437.51	21
.....	7.94	290.86	5,078.28	0.24	29.5	8,188.83	22
327.50	12,877.73	1,510.17	3,390.16	7,908.85	252,383.05	0.70	56.8	11,612.40	21,431.84	333,651.00	
79.75	3,135.75	367.72	825.51	1,925.79	61,455.34	0.17	3,121.61	5,761.25	89,691.13	
521.39	12,214.94	1,453.69	9,242.90	7,024.45	224,758.60	0.19	62.0	12,354.88	33,866.46	275,116.45	
.....	4 11 1	13 5	13 17 3	0 4	60.4	210 16 1	23
.....	22.18	3.27	67.51	0.08	1,026.62	24
.....	48 13 10	15 3 7	230 5 0	0 1 $\frac{1}{2}$	51.4	261 15 0	25
.....	237.13	73 92	1,121.31	0.03	26
.....	72 13 6	10 7 7	83 1 1	27
.....	26 8 6	4 1 2	319 13 10	0 0 $\frac{1}{2}$	28
.....	21 15 8	1 13 9	436 8 1	0 2 $\frac{1}{2}$	29
.....	1 19 1	10 5	39 7 5	0 3 $\frac{1}{2}$	
.....	1 13 10	1 0 4	11 13 1	0 2 $\frac{1}{2}$	
.....	1 18 3	5 11	17 13 8	0 6	
.....	126 8 10	17 19 2	907 17 2	0 1 $\frac{1}{2}$	182.4	261 15 0	
.....	615.78	87.46	4,421.28	0.02	1,274.71	
.....	7 0 0	1 4 7	48 5 2	0 5 $\frac{1}{2}$	66.0	30
.....	34.08	5.98	235.02	0.12	
.....	14 0 8	3 3 0	108 3 2	0 2 $\frac{1}{2}$	187.8	95 9 3	31
.....	14 8 10	3 17 1	97 11 5	0 1 $\frac{1}{2}$	122.7	32
.....	35 17 11	4 0 11	322 4 2	0 1 $\frac{1}{2}$	105.2	769 10 6	33
.....	4 16 3	12 7 9	0 4 $\frac{1}{2}$	87.4	34
.....	69 8 8	11 1 0	540 6 6	0 1 $\frac{1}{2}$	92.0	864 19 9	
.....	336.92	53.81	2,631.37	0.03	4,212.46	
.....	24 10 0	4 13 10	121 15 0	0 2	87.7	35
.....	119.31	22.85	592 92	0.04	
.....	30 6 0	6 14 11	142 19 5	0 3	91.5	87 16 0	36
.....	37
.....	38
.....	30 6 0	6 14 11	142 19 5	0 3	91.5	37 16 0	
.....	147.55	32.85	696.26	0.06	427.58	
.....	310 13 5	57 10 6	2,005 5 6	0 1 $\frac{1}{2}$	104.2	1,425 6 10	
.....	1,512.95	280.14	3,765.67	0.03	6,941.37	

Recapitulation for

Name of Conference or Mission	No. Churches	Baptism and Vote	Apostasy	Death	Net Gain	Present Membership	Evangelistic Workers	Colporteurs	No. Sabbath-Schools	Membership	Average Attendance	Tithe	Tithe per capita	Sabbath-School Offerings	Weekly Offerings
1	2	3	4	5	6	7	8	9	10	11	12	13	14	15	16
N. E. Division							13								
Baltic Union	80	342	155	85	-81	5,223	63	22	99	5,366	3,864	10,776.30*	0.09	1,836.21	3.68
British	94	491	323	121	45	5,966	116	79	168	5,677	4,422	154,576.15	0.53	27,301.11	
E. Nordic	97	365	143	65	159	5,469	70	81	197	4,777	3,507	75,624.90	0.29	16,272.86	
Polish	161	253	38	31	159	4,427	63	21	249	4,964	3,888	13,250.80	0.13	2,937.58	
W. Nordic	141	367	144	87	119	7,087	63	69	178	6,094	4,863	108,218.33	0.30	22,158.01	15.58
Union Totals	573	1,818	803	389	401	28,172	388	272	891	26,878	20,544	\$ 362,446.48	0.31	70,505.77	19.26
French Equa. Miss.	6	4	1		3	28	8		5	223	310	\$ 111.80	0.13	42.06	
Gold Coast Union	12	97	23	6	71	1,167	46	1	80	4,138	2,956	\$ 2,180.70	0.06	711.46	
Kenya	37	573	211	25	339	5,855	274	8	247	16,152	15,739	\$ 2,424.50	0.01	2,348.83	
Liberian Mission	9	2	14	2	12	104	17		18	279	222	\$ 356.10	0.18	92.50	
Nigerian Union	10	28	730	19	21	692	3,153	129	15	180	15,021	\$ 2,860.90	0.04	1,690.70	
Sierra Leone Miss.	11	13				501	26		32	1,674	973	\$ 675.70	0.05	333.18	
Upper Nile Union	12	28	15	4	10	421	37	5	41	1,051	828	\$ 761.00	0.07	270.91	
Mission Totals	105	1,446	269	58	1,127	11,229	537	29	603	38,538	33,170	\$ 9,370.70	0.03	5,489.64	19.26
Grand Totals	678	3,264	1,072	447	1,528	39,401	925	301	1,494	65,416	53,714	\$ 371,817.18	0.23	75,995.41	19.26

*Latvia not included. Polish Union seven months only. Missions three quarters only.

Missionary Volunteer Report for Year Ended December 31, 1939

	Baltic Union	British Union	East Nordic Union	Polish Union	West Nordic Union	North Cameroons Mission	Gold Coast Union Mission	Kenya Union Mission	Liberia Mission	Nigerian Union Mission	Sierra Leone Mission	Upper Nile Union Mission	Totals, 1939	Totals, 1938	Increase
No. Societies	72	85	36	96	81	1	12	81	3	32	13	14	526	493	33
Membership	784	1,483	791	1,147	1,876	18	145	1,927	72	1,201	339	347	10,190	9,787	403
Average Attendance	301	1,112	842	808	1,668	18	145	1,728	72	444	269	365	7,555	6,220	1,335
No. Reporting	308	576	275	519	380	11	126	1,267	28	307	275	275	4,171	4,257	86*
Missionary Work															
No. Y. P. Baptized	4	38	62	98	23			222					447	613	166*
Bible Readings	8,649	2,210	3,559	13,396	3,167	1,933	60	31,917	60	6,977	3,558	4,047	78,633	101,790	23,157*
Missionary Visits	10,169	4,359	3,561	5,957	4,890			25,949	112	570	3,944	4,026	63,537	97,875	34,338*
No. taken to Services	2,794	1,031	593	1,291	342	256		21,433	146	609	1,708	604	30,807	49,030	18,223*
People Helped	5,329	18,276	883	3,880	306	33	259	40,822	295	7,479	2,327	1,957	81,846	128,798	46,952*
Treatments Given	2,032	2,160	609	1,454	396	46			331	6,214	744	1,433	15,449	18,609	3,160*
Articles of Clothing Given	467	1,709	1,041	962	233				130		262		4,804	5,800	996*
Books, Papers, etc., Dist.	16,576	93,673	25,676	4,128	39,165			6,830	3	2,008	231	2,153	190,443	267,938	77,495*
Missionary Letters Written	1,043	2,312	2,461	363	2,101			6,579	8	389	128	475	15,859	19,821	3,962*

Note.—Figures for Mission Fields are for nine months only, figures for Poland are for six months only, as compared with twelve months in 1938. *Decrease

Report of the Educational Institutions for the Year 1939

NAME	ADDRESS	No. of Buildings	No. of Acres	Capacity	Enrolment in Grades		Teachers	Other Employees	Grades Done	Library No. of Vols.	Laboratory	Manual Tr. Pac.	Graduated			Stud. entered work	
					1-8	9-12							12	14	16		
EUROPEAN																	
1. Advent Missions-seminar	Post Box 440, Riga, Latvia	15	270	150	...	44	...	11	6	9-12	1,935	Yes	Yes	9	9	...	1
2. Estonian Mission School	Merepuistee 14a, Tallinn, Estonia	1	...	29	...	29	...	5	...	9-12	1,100	Yes	No	8
3. Finnish Mission School	Piikkiö, Finland	10	123	34	...	34	...	6	6	9-12	500	Yes	Yes	2	22
4. Newbold Missionary College	Near Rugby, England	17	320	120	...	70	30	9	6	9-14	2,500	Yes	Yes	13	...	13	50
5.*Norway Mission School	Algarheim, Jessheim, Norway	7	300	95	...	85	10	6	4	9-14	1,300	Yes	Yes
6.*Polish Union Missionschule	Pensjonat J. Schwital, Kamienica 230, na Slasku, Poland	3	...	21	Closed Temporarily		848
7. Swedish Missionary School	Ekebyholm, Rimbo, Sweden	7	1,800	72	...	60	12	6	5	9-14	1,650	Yes	Yes	22	17	5	...
8. Vejlefjord Mission School	Daugaard Station, Denmark	12	80	80	13	68	...	7	5	1-12	1,300	Yes	Yes	10	10	...	20
Totals		72	2,893	601	13	390	52	50	32	11,133				64	36	18	93
AFRICAN																	
9. Agona Training School	Agona, Ashanti, Gold Coast, West Africa	3	5	16	7	1	...	7-9	12	No	Yes	1	1
10.*Ibadan Training School	P.O. Box 19, Ibadan, Nigeria, West Africa	5	8	120	...	12	...	2	...	5-12	120	No	Yes
11. Kamagambo Training School	P.O. Kisii, Kenya Col., B.E.A.	30	25	300	210	33	...	14	...	1-12	350	No	Yes	22	20
12. Upper Nile Union Training School	P.O. Mubende, Uganda, East Africa	10	640	70	58	5	2	1-8	...	No	Yes	12	12
13. Waterloo Training School	Waterloo, Sierra Leone West Africa	5	5	150	218	12	...	5	2	1-10	350	No	Yes	7
Totals		53	683	856	493	57	...	27	4	...	832			42	39
*No Report		Totals for 1939		125	3,576	1,257	506	447	52	77	36	11,965		106	36	18	126
		Totals for 1938		125	3,584	1,161	515	439	58	73	95	11,640		102	43	21	186
		Totals for 1937		128	3,706	1,123	510	402	52	71	33	10,480		91	59	2	143
		Totals for 1936		110	3,101	1,102	409	446	49	71	43	10,439		85	41	21	124

Year Ended December 31, 1939

Harvest Ingathering	Annual Offering	Miscellaneous Offerings	Week of Sacrifice	Young People's Offerings	Other Gifts	Big Week	Total Offerings	Total Offerings per capita	Percentage of Offerings to Tithe	Total Contribu- tions for Home- Missionary Work	Total Contribu- tions for Local Church Work	Colporteur Sales
17	18	19	20	21	22	23	24	25	26	27	28	29
2,027.81	64.95	642.11	18.56	653.79	5,247.11*	0.04	48.7	177.80	1,024.19	8,842.76
52,079.14	2,576.07	175.08	3,563.83	828.93	5,500.68	1,995.93	94,020.77	0.32	80.8	918.40	21,096.40	90,611.52
30,693.59	3,297.85	227.23	3,879.17	173.89	2,916.71	1,554.53	59,015.83	0.22	78.0	3,025.40	5,253.98	79,126.86
71.74	17.82	39.83	994.08	64.59	894.41	5,019.55	0.05	37.9	111.67	730.64	6,844.18
27,078.82	5,868.41	79.75	3,135.75	367.72	825.51	1,925.79	61,455.34	0.17	56.8	3,121.61	5,761.25	89,691.18
111,951.10	11,825.10	521.39	12,214.94	1,453.69	9,242.90	7,024.45	224,758.60	0.19	62.0	12,354.88	33,866.46	275,116.45
.....	22.18	3.27	67.51	0.08	60.4
90.18	8.62	237.13	73.92	1,121.31	0.03	51.4	1,026.62
79.65	1,289.56	615.78	87.46	4,421.28	0.02	182.4	1,274.71
91.97	10.49	34.08	5.98	235.02	0.12	66.0
469.48	80.46	336.92	53.81	2,631.37	0.03	92.0	4,212.46
84.65	32.93	119.31	22.85	592.92	0.04	87.7	427.58
241.48	3.47	147.55	32.88	696.26	0.06	91.5
1,057.41	1,425.53	1,512.95	280.14	9,765.67	0.03	104.2	6,941.37
113,008.51	13,250.63	521.39	13,727.89	1,453.69	9,242.90	7,304.59	234,524.27	0.15	63.1	12,354.88	33,866.46	282,057.82

Home Missionary Report for Year Ended December 31, 1939

	Baltic Union	British Union	East Nordic Union	Polish Union	West Nordic Union	French Cape Mission	Gold Coast	Kenya Union Mission	Liberian Mission	Nigerian Union	Sierra Leone Mission	Upper Nile Union	Totals, 1939	Totals, 1938	Increase*
Church Membership	5,223	5,966	5,469	4,427	7,087	28	1,167	5,855	104	3,153	501	421	39,401	37,873	1,528
Number Reporting	2,160	1,641	1,528	1,190	1,930	8	2,058	21	231	206	210	11,183	13,219	2,036*
Per Cent Reporting	41%	28%	28%	27%	27%	25%	35%	19%	7%	41%	48%	28%	35%	7%
Missionary Activities															
Bible Readings	61,096	9,138	17,417	45,613	21,129	1,294	60	61,304	309	6,977	3,558	5,615	233,510	252,036	18,526*
Missionary Visits	58,194	26,785	18,755	18,894	19,882	100	47,839	415	570	3,944	5,906	201,284	234,675	33,391*
No. taken to Services	17,847	4,326	3,187	3,358	2,672	485	36,758	353	609	1,708	783	72,086	93,854	21,768*
No. People Helped	39,247	39,194	9,321	12,898	824	103	259	75,823	1,233	7,479	2,327	3,139	191,347	245,472	53,625*
Treatments given	14,258	5,413	4,231	6,056	2,588	50	1,387	6,244	744	1,433	42,404	42,567	163*
Articles of clothing given	5,947	8,836	12,945	1,901	6,462	47	349	262	191	36,940	31,486	5,454
Books, Tracts, etc., distributed	108,360	469,566	220,470	13,514	293,556	62	11,932	67	2,008	231	3,242	1,123,008	1,093,951	29,057*
Missionary Letters written	3,185	111,199	7,551	1,236	5,791	12	11,585	76	389	128	1,047	42,199	48,660	6,461*
SOULS WON	15	31	53	11	59	14	185	323	138*

*Decrease The reports from the Mission Fields include three quarters only

Report of the Sanitariums for the Year 1939

NAME	ADDRESS	No. of Buildings	No. of Acres	Capacity	Persons Treated	Charity Work	Physicians	Nurses	Other Employees	Total Employees
1. Hultafors Sanatorium	Hultafors, Sweden	10	250	125	971	\$ 1,155.91	2	27	79	108
2.*Kendu Hospital	Gendia, P.O. Kisumu, Kenya E. Af.	5	10	43	10,139	\$ 3,963.69	1	3	24	28
3. Skodsborg Badesanatorium	Skodsborg, Denmark	25	12	315	2,431	\$ 16,700.80	6	113	196	315
4. Stanboroughs Hydro	Watford, Herts, England	5	60	100	800	\$ 246.28	2	32	52	86
	Totals for 1939	45	332	583	14,341	\$ 22,066.68	11	175	351	537
	Totals for 1938	45	332	608	14,908	\$ 24,834.13	11	172	349	532
	Totals for 1937	45	332	608	15,387	\$ 25,055.55	11	169	318	498
	Totals for 1936	42	254	606	17,722	\$ 24,370.28	11	172	317	500

*No Report

Report of the Treatment Rooms for the Year 1939

NAME	ADDRESS	Capacity	Persons Treated	Charity Work	Physicians	Nurses	Other Employees	Total Employees
1. Ekebyholm Badsanatorium	Rimbo, Sweden	65	200	\$ 107.53	1	5	44	50
2.*Fysisk Kuranstalt	St. Kongensgade 36-38, Copenhagen, Den- mark	200	21,683	\$ 1,012.34	4	5	18	27
3. Helsingfors Fysikaliska Institut	Annegatan 7, Helsingfors, Finland	50	602	\$ 2,613.80	1	5	38	44
4. Kurbadet	Akersgaten 74, O lo, Norway	225	45,865	\$ 776.61	1	20	42	58
5. Nyhyttans Badanstalt	Järnboas, Sweden	90	735	\$ 528.02	1	5	4	13
6. Stockholm Fysikaliska Kuranstalt	Humlegårdsgatan 18, Stockholm, Sweden	75	1,250	\$ 121.05	1	5	30	38
7. Toivonlinnan Kylpyparantola	Piikkiö, Finland	60	242	\$	1	5	1	1
8. Treatment and Bathroom "SUZI"	Post Box 440, Riga, Latvia	20	50	\$	1	1	14	15
9. Veileford Sommerpensionat	Daugaard Station, Denmark	20	30	\$	1	1	14	15
	Totals for 1939	805	70,657	\$ 5,159.35	9	59	190	258
	Totals for 1938	805	72,859	\$ 5,119.79	9	61	185	255
	Totals for 1937	730	63,834	\$ 5,458.68	4	77	150	231
	Totals for 1936	745	24,378	\$ 4,284.00	5	82	164	251

*No Report

Report of African Work for the Year Ended December 31, 1939

Printed in Great Britain for the publishers, the Northern European Division of the General Conference of S.D.A., by The Stanborough Press Ltd., Watford, Herts., England.

NAME OF MISSION	Ordained	Licensed	Licensed	Teachers	Colporteurs	Other Workers	Total	Number in	Train. Schs	Stat. Scho's	Out-Schools	Girls' Schs	Med. Miss. W	European Tithe	African Tithe	Total Tithe	Per Cent of African to Total Tithe						
	Ministers	Ministers	Missionaries				Baptismal Class	Number of	Enrolment	Number of	Enrolment	Number of	Enrolment					No. Per. giving Treatments	No. Treatments given				
1	2	3	4	5	6	7	8	9	10	11	12	13	14	15	16	17	18	19	20	21	22	23	
French Equatorial A. Miss.	1	4	...	2	6	88	1	28	1	12	2	1,778	£ 16 2 3	6 16 11	22 19 2	29.8	
Gold Coast Union	2	2	3	34	1	3	43	618	1	7	2	188	22	610	2	1,120	£ 92 3 3	355 12 9	447 16 0	79.4	
Kenya Union	8	1	9	£ 110 16 8	387 0 10	497 17 6	77.7	
West Kenya Mission	3	4	12	3	108	...	26	153	823	1	243	3	498	61	2,696	1	40	1	362	3
South " "	4	2	6	2	62	...	2	74	144	...	1	120	48	1,765	1	24	4
Central " "	5	1	3	6	10	98	...	1	94	2	70	5
Northwest " "	6	10	...	2	12	28	...	1	58	7	259	6
Coast Mission	7	1	...	6	7	27	...	1	44	4	98	7
Totals	8	18	8	192	8	31	265	1,120	1	243	7	814	122	4,888	2	64	1	362	£ 110 16 8	387 0 10	497 17 6	77.7	
Liberian Mission	8	2	...	3	6	...	4	15	21	...	3	92	1	66	1	9	5	3,531	£ 35 13 4	37 9 2	73 2 6	51.2	
Nigerian Union	£ 129 16 8	...	129 16 8
Southwestern Nigerian Miss.	9	2	1	5	12	1	1	22	150	1	12	1	72	3	173	...	1	4,203	£ 5 18 4	51 13 4	57 11 8	89.7	
Northwestern " "	10	1	...	10	11	...	5	27	247	7	211	...	1	3,122	£ 6 11 8	72 18 4	79 10 0	91.7	
Southeastern " "	11	3	3	28	13	14	17	78	2,224	...	2	346	4	211	1	29	1	1,894	£ 18 4 2	288 3 4	306 7 6	94.1	
Northeastern " "	12	2	2	10	1	1,640	£ 7 1 8	7 1 8	14 3 4	50.0	
Totals	6	4	45	36	15	23	129	2,631	1	12	3	418	14	595	1	29	4	10,859	£ 167 12 6	419 16 8	587 9 2	71.5	
Sierra Leone Mission	13	3	...	20	23	756	1	230	13	626	1	11	5	523	£ 50 10 0	88 5 0	138 15 0	63.6	
Upper Nile Union	5	5	£ 84 15 10	71 9 2	156 5 0	45.7	
Central Uganda Mission	14	...	3	9	2	...	14	152	...	1	18	8	170	1	...	£ 42	14
Eastern Uganda Mission	15	...	1	5	2	...	8	133	...	1	52	2	36	1	42	£ 635	15
Nchwanga Mission	16	...	1	5	6	126	1	58	1	15	1	42	2	635	£ 84 15 10	71 9 2	156 5 0	45.7	
Totals	5	14	9	5	33	411	1	58	3	85	11	248	3	677	£ 84 15 10	71 9 2	156 5 0	45.7	
Grand Totals for the year 1939*	21	30	70	301	29	63	514	5,645	5	550	19	1,625	184	7,045	5	113	22	18,850	£ 557 13 10	1,366 10 6	1,924 4 4	71.0	
" " " " " 1938	18	38	91	294	17	54	512	5,979	5	548	17	1,309	171	6,839	5	106	17	26,559	£ 2,715.96	6,654.74	9,370.70	...	
" " " " " 1937	14	36	81	290	18	62	501	6,212	5	514	30	1,908	191	7,051	7	103	51	81,995	
" " " " " 1936	15	31	78	209	17	65	415	4,698	2	140	18	1,424	155	5,659	4	30	46	77,313	

*Missions 1939 three quarters only