

QUARTERLY REVIEW

of the

European Division of the General Conference of Seventh-Day Adventists

Vol. 13

No. 3

Statistical Report of Conferences and Mission Fields
for the
Third Quarter 1927

Issued by the European Division of Seventh-Day Adventists
17 Höheweg, Berne, Switzerland

Gleanings From the Minutes of the Fall Council.

Here are a few items we notice in the minutes of the recent Fall Council of the General Conference.

The budget voted to the world field for 1928 amounts to \$ 4,429,561, which falls short of the calls by about \$ 433,000.—, but is still \$ 304,103.09 above the appropriations for 1927. Of this \$ 739,409.49 goes to the European Division, of which, however, only \$160,000.— comes from the General Conference, while \$ 579,409.49 are the estimated receipts in the European Division itself. Apart from this, \$ 10,000.— have been appropriated from the Church Extension Fund to the East German Union towards their Berlin church property, and \$ 5,000.— as a special help to provide a meeting hall for the church at Basel, which has recently celebrated its Fortieth Anniversary.

A sum of \$ 28, 384.—, gross amount, has been allotted to Europe from the Missions Extension Fund, of which the larger amount will be raised in Europe during the Big Week Campaign of next year.

H. E. Rogers, statistical secretary, presented an operating statement for the institutions in North America for the period of 1926—27, which showed a decrease in liabilities to the amount of \$ 352,914.38. Special efforts are to be made to further reduce the heavy indebtedness on our various institutions.

The next General Conference Session is to be held May 29 — June 16, 1930, in the Auditorium at San Francisco where it convened in 1922. It was voted to hold the Biennial Council of the General Conference September 25 — October 5, 1928, at Springfield, Mass. This will be preceded by an officers' council at some place in Europe not yet determined, which will be attended by the officers of the General Conference and the presidents of other Divisions who will come by way of Europe en route to the Biennial Council with but little extra expense.

The European Division has now been definitely asked to supply two missionary couples for the work in China. These had been contemplated some time ago, but the plan was held in suspense until more satisfactory developments of conditions in China justified such steps. Elder Evans, who attended the Fall Council, gave a touching account of the situation in that large field, how civil-war has involved great loss of mission property and restriction of our evangelical activities. Our native

brethren were bravely facing these perplexities that bring so much hardship and suffering to the rank and file of our people. The sending of two families from Germany is an indication of the courage and hope of those responsible for the work in China. We must continue our work in good faith in spite of all the difficulties that beset us. All our churches in Europe have whole-heartedly joined in the day of fasting and prayer that had been appointed for October 22, and we confidently believe that the Lord will answer the united petitions of His people the world over.

Economy in Promotion Material and Administration.

A very timely recommendation has been adopted at the Autumn Council of the General Conference, relating to the production and circulation of printed matter in connexion with promotion work in our various lines of endeavour. The recommendation reads as follows:

“With full recognition that our ever enlarging program in all the world lays upon the leaders in General, Division, union and local fields, both at home and abroad, the necessity of strong promotion work; and, — —

“Recognizing that the real purpose of this promotion work may be defeated, and the money employed in doing it largely wasted, when the field is flooded with circular and mimeographed material issuing from all departments; and, — —

“Believing the time has come when in the interests of economy of valuable time and of money some check should be placed upon the output of this material which is being sent out,

“We recommend, That all field leaders and departmental secretaries, both home and foreign, give earnest study and make diligent effort, to reduce the size and number of the circulars, programs, reports, letters, and other mimeograph or printed material which they send out.”

Various other resolutions were passed enjoining the necessity of exercising greater economy in all our administration. The budget system, already largely in practice in our general organization, is to be adopted by all conferences and made operative beginning January 1928. Monthly financial reports showing the budget allowance and

the actual operating expenses to date, will enable those in charge to check irregularities, and to take steps necessary to effect all economies possible in operating, and thus place the work on a safe financial footing.

Here is another recommendation on general economy: "That economy in office and field expense be carried out in every possible way consistent with progressive plans."

Ministerial Standards.

"Whereas, The standards of the ministry in all things should be maintained on an irreproachable basis in order that the ministry be not blamed,"

"We recommend, 1. That our conference and institutional workers refrain from all side lines of business and give themselves wholly to the denominational work and the ministry of the gospel.

2. "We counsel our workers to arrange their personal financial budgets so as to live within their regular income, and where they do not succeed in so doing that they be advised to take up some remunerative line of business outside of denominational employment.

3. "Believing that every worker should be a faithful tithe-payer, we reaffirm the action of the Des Moines Autumn Council of 1925, not to employ any worker who is not a faithful tithe-payer. Further, that workers who are known to be unfaithful in tithe paying shall not be transferred to another conference without proper consideration of this standing of the worker.

4. "That workers who continually neglect or refuse to pay their just obligations be advised to take up some other line of work.

5. "And further, that proper and satisfactory arrangements be made by workers for all financial obligations before transference to another conference.

6. "While desiring to encourage every worker to make continuous effort for self-improvement, especially through correspondence courses, we recommend that full time conference workers, or other denominational employees, do not take residence school work, or any line of study that would make inroads upon time that should be given to their regular duties, without first making proper arrangements with those in charge of their work." *From the minutes of the Autumn Council of the General Conference September 28 to October 4, 1927.*

Leadership in the Colporteur Work.

The following resolutions were voted at the Autumn Council of the General Conference to be

incorporated in the recommendations of the Publishing Department, which we pass on as being of general interest:

"That in the selection of leaders, we recognize as essential the following:

1. "The need of a vision of the colporteur work as a soul-saving agency.

2. "A definite conviction of the call of the Lord to leadership in the colporteur work.

3. "An unreserved consecration to this line of work as a sole aim.

4. "A practical experience that is kept fresh by personally engaging in colporteur work.

5. "A sense of responsibility for the success of the work."

A Visit to Bulgaria and Greece.

September 29 to October 2, the general meeting was held for the Bulgarian Mission in the city of Rustchuck. 130 members of the 260 in the field attended the conference. Brother H. Bõx of the Publishing Department, who held an institute for the colporteurs, and also Brother P. Paulini from Rumania, were present, and it gave us great joy to see the live interest manifested by all our believers, and their appreciation of the spiritual help given them in the studies. Also the public meetings, held every evening in a large cinema, were well attended by outside visitors. Four special meetings were devoted to business matters in which our brethren took an active part. During the last twenty-one months some ninety souls have been added to the flock. The field now has ten gospel workers with sixteen book-evangelists. There has also been an increase in the tithe and offerings, and the activities in the Sabbath school and general missionary work are encouraging. There are two groups of the Young People's Society with twenty-six members, who also seem to take an active part in all missionary endeavour. Elder A. Thomas was elected superintendent of the field. A good beginning of the new conference year has been made by the baptism of eight souls in the river Danube during the days of the meeting. Our brethren returned to their homes with new courage and determination to do their best in promoting the work.

From Bulgaria I proceeded to Greece, where our brethren had long been waiting for a visit from the Division. Greece, with its seven and-a-half million inhabitants, is at present the smallest and newest mission in our European territory. Of the eighty-two members, thirty are found at Salonica, the former Thessalonica, thirty also at Athens, and fourteen at Volas. Then there is a little company of six at Janina, and two on the Island of Syra. Salonica has thus far been the center of our work,

where we own a small building that formerly served as a home and school for the orphans and children of our fugitive brethren and sisters of Asia Minor. On the groundfloor there is a meeting hall seating about one hundred. Most of our brethren are Armenian fugitives, who are living in rather poor circumstances. It was my privilege to have a number of meetings with them, and to address also friends of our work. During my stay I was vividly reminded of the time when the apostle Paul first preached the message to the people of Thessalonica, where he raised a church of which he bore such a good testimony. Brother Hennecke, the superintendent, has now been in Greece some eighteen months, and has made good progress in learning the language. He must, of course, still speak through an interpreter, and as the Armenians speak only Turkish or Armenian, he is obliged to use two translators in his meetings; that is, his German lecture must be translated into Greek, and then from this language into the Turkish. I was also greatly pleased to meet our brethren at Athens and to hold meetings with them, which again brought to my mind the experience of Paul as recorded in the seventeenth chapter of Acts, with the difference, however, that my audience were not philosophers, but simple fugitives. Generally the population is still under the sway of the Greek Orthodox Church, which controls everything, and hence superstition still prevails. In northern Macedonia there is a little more liberty, yet in Greece proper it is difficult to carry on evangelistic work and the circulation of literature without coming into conflict with the Greek Church. We hope that a new impetus will be given to the work in this country which should certainly enlist our sympathy and prayers.

H. F. Schubert.

Czecho-Slovakia, Rumania, France.

During the autumn months I have been spending some time in the above fields in study with the publishing department leaders as to how we can bring greater efficiency and success to this department. The large union institute with the colporteurs of the Czecho-Slovakian union was preceded by a three days' meeting with the depart-

ment leaders of that field. One of the problems that complicate the question of self-support for the publishing house is the great mixture of languages. In our institute with sixty colporteurs present, five languages were in constant use. Our publishing house in Brünn must stock literature in six languages, and much of this is produced locally. Yet, despite this handicap, manager Ludwig reports a prosperous house. The field problems are many owing to persecution, illiteracy and poverty. The new school established near the city of Prague about two years ago has drawn heavily on our colporteur force as most of the students have been chosen from our best colporteurs. Eleven



Colporteur Institute in the Czecho-Slovakian Union.

more of the successful colporteurs were invited to enter school this year.

Until about a year ago it had been some time since Rumania had had a union field secretary. At the time of my visit in the autumn of 1926, a man was appointed to this position, and God has richly blessed his efforts. With the exception of two months, each month of 1927 had shown a substantial gain in colporteur sales over the corresponding months of 1926. Institutes were held this autumn in each of the four local conferences of the union, and these were preceded by a convention with the field and publishing house leaders. Rumania also has its language difficulties. With eighteen present at our Bucharest institute, seven languages were represented. Then other problems here are similar to those of Czecho-Slovakia. But God is blessing, and many souls are learning of the message through the efforts of our colporteurs.

The Latin union is one of the most populous of union fields, nearly 100,000,000 people living

within its territory. And it is not an easy field for the colporteur. We had a convention with our department leaders there on a little different plan than that usually followed. First the field secretaries, tract society secretaries and publishing house workers spent a few days studying real field problems. During the day these workers would spend the time going two and two from house to house with the books, studying new methods of approach and how best to meet the objection raised. In the evening, all would come together to discuss the problems of the day, and how to bring greater efficiency into the work. After several days of this kind of practical work, the conference presidents and other members of the union conference committee joined us for a few more days of intensive study of our problems. Such cooperation between committees and department workers must result in much good to the work, and this spirit of cooperation is doubtless responsible in part for the fact that each field secretary when rendering his report could report such excellent gains over 1926. While the different fields had set high goals for 1927, they could report goals reached in eight or nine months, and in one conference they expect to sell an amount equal to twice the goal set.

C. E. Weeks.

Manual for Ministers.

Foot-Washing and Communion Service.

(The ordinances are to be conducted by an ordained minister or church elder. The deacons who assist in passing the bread and wine should have been previously ordained.)

The opening service may be as usual, — hymns, Scripture reading, and prayer, — after which a suitable address should be given, dealing with the ordinance of humility and the significance of the communion service. The congregation then separates for the ordinance of humility, the men together in one place, the women in another. Where but one room is available, a curtain strung across on a wire readily provides the two rooms.

Previous to the meeting, all arrangements should be made by the deacon and deaconess for the water, basins, and towels. In cold weather the water should be warmed. A sufficient number of towels should be provided so that each person may have the use of a clean one. The feet of those who participate should be laved with the water and carefully dried. A separate basin and towel and a piece of soap should be reserved, so that after the ceremony each person may wash and dry his hands.

Care should be taken to render the ordinance of humility a solemn procedure. If a kiss is exchanged, let it be confined to those who serve each other. Occasional hymns may be sung during its progress, and such conversation as may be carried on should be of a devotional and religious

character and in a subdued voice. Carelessness or levity in connexion with any of the ordinances of the Lord's house is an offense to God.

When the brethren and sisters reassemble after having separated for the ordinance of humility, the minister takes his place behind the table on which the bread and wine are placed, covered with a clean linen cloth. After the hymn, the minister removes the covering from the bread, carefully folding it and laying it to one side, and says, "I have received of the Lord that which also I delivered unto you, That the Lord Jesus the same night in which He was betrayed took bread, and when He had given thanks, He brake it," 1 Cor. 11:23, 24. A prayer of intercession and thanksgiving should then be offered, referring to the death of Christ on the cross and the blessings His sacrifice has brought to repentant sinners.

The officiating minister should then break the bread into convenient portions, and while doing this may repeat suitable scriptures or make timely remarks. The broken bread should then be given to the deacons to pass to the congregation, each person retaining his portion of bread until the officiating minister is served, so that all may partake together. When the deacons return from serving the congregation, the minister serves them, and one of them, taking the plate, serves the minister. If two ministers are officiating, they serve each other. The leader then partakes of the bread, all following.

Then follows an interval of silent prayer. The remnant of the bread should then be covered with linen, the wine uncovered, and the minister repeats, "After the same manner also He took the cup, when He had supped, saying, This cup is the new testament in My blood: this do ye, as oft as ye drink it, in remembrance of Me, for as often as ye eat this bread, and drink this cup, ye do show the Lord's death till He come." 1 Cor. 11:25, 26. (Math. 26:29 might also be repeated.)

Then follows a prayer, asking the blessing of God on the emblem of His blood spilled for us. It is well to remember in prayer the absent, the sick, and the aged. The minister then gives to the deacons the cups to serve to the congregation; on their return, they are served, and in turn serve the minister. Where the small individual cups are used, all may wait until the minister is served, and so all partake together. After an interval of silent prayer, the deacons gather the cups from the congregation, and the emblems are entirely covered with linen.

The closing hymn is sung, during which an offering for the poor or some other object may be taken; the congregation is then dismissed with the benediction.

The deacons or deaconesses should see to it that the unused remainder of the broken bread and

Statistical Report of the European Division of the General

Name of Conference or Mission	No. of Churches	Previous Membership	By baptism	By vote	By letter	Total gains	By apostasy	By death	By letter	Total losses	Net gain	Present Membership	Ordained Ministers	Licensed Ministers	Lic. Missionaries	Other Workers	Colporteurs	Total Workers
1	2	3	4	5	6	7	8	9	10	11	12	13	14	15	16	17	18	19
European Division	12	17	..	27
Baltic Union	4	1	..	1	..	6
Latvian Conference	40	2099	40	1	2	43	24	5	—	29	14	2113	6	4	6	1	21	38
Esthonian "	18	1874	20	3	1	24	8	3	—	11	13	1387	5	3	2	2	23	35
Lithuanian Mission	10	160	6	—	—	6	1	—	1	2	4	164	2	3	1	—	—	6
Total	68	3633	66	4	3	73	33	8	1	42	31	3664	17	11	9	4	44	85
British Union Conference	5	2	..	2	..	9
South British Conference	36	2628	96	21	18	135	14	10	13	37	98	2726	21	5	22	6	60	114
North British "	28	1814	11	1	11	23	14	8	14	36	-13	1801	11	6	13	1	58	89
Total	64	4442	107	22	29	158	28	18	27	73	85	4527	37	13	35	9	118	212
Central European Union	3	4	..	7
German Swiss Conference	29	1085	..	6	..	12	11	2	6	19	-7	1078	4	5	4	2	22	37
Wurtemberg "	45	1554	18	3	10	31	18	5	9	32	-1	1558	7	1	9	2	29	48
Baden "	21	950	9	1	7	17	8	2	7	17	—	950	3	4	5	2	18	32
North Bavarian "	23	1224	13	1	9	23	7	3	11	21	2	1226	6	2	3	2	19	32
South Bavarian "	33	1826	36	1	12	49	21	5	21	47	2	1828	6	2	6	2	22	38
Main-Neckar "	22	1442	14	3	13	30	18	6	8	32	-2	1440	4	1	8	2	28	43
Austrian "	23	961	16	—	1	17	8	4	3	15	2	963	7	—	8	2	23	40
School Church	1	171	—	—	8	—	—	—	17	17	-9	162	2	1	—	18	—	16
Total	197	9213	106	15	66	187	91	27	82	200	-13	9200	42	16	43	31	161	293
Czechoslovakian Union	1	1	..	3	..	5
Moravia-Silesian Conference	28	888	29	3	2	34	14	3	16	33	1	889	3	2	1	2	14	22
North Bohemian "	27	598	7	—	3	10	3	1	3	7	3	601	6	—	2	1	13	22
Central Bohemian Mission	12	295	6	—	8	14	—	—	8	8	6	301	1	—	1	3	21	26
Slovakian Mission	15	381	9	—	4	13	6	2	1	9	4	385	2	2	1	2	14	21
Total	82	2162	51	3	17	71	23	6	28	57	14	2176	13	5	5	11	62	96
East German Union	3	7	..	10
Berlin Conference	30	2351	34	8	107	149	41	10	107	158	-9	2342	10	6	6	2	23	47
Brandenburg "	58	1998	46	5	207	258	19	—	69	89	169	2167	11	10	1	3	23	48
Lower Silesian "	38	1216	12	4	21	37	22	—	34	56	-19	1197	6	6	—	2	18	32
North E. Saxonian "	42	2080	36	2	59	97	15	4	64	83	14	2094	10	6	5	3	30	54
Upper Silesian "	32	1266	16	1	16	33	11	4	16	31	2	1268	6	6	1	2	22	37
East Prussian "	64	2039	34	1	39	74	37	5	39	81	-7	2032	10	6	—	2	26	44
Pomeranian "	46	1560	13	1	32	46	21	5	157	183	-137	1423	8	5	3	2	18	36
West Saxonian "	66	2325	30	3	28	61	9	—	42	51	10	2335	10	4	7	3	22	46
Total	376	14835	221	25	509	755	175	29	528	732	23	14858	74	49	23	26	182	354
Hungarian Union	2	1	..	3	..	6
East Hungarian Conference	27	730	7	—	7	14	15	2	3	20	-6	724	3	2	2	3	19	29
Central Hungarian "	20	622	21	9	3	33	7	3	8	18	15	637	2	—	6	1	24	33
West Hungarian Mission	13	156	5	1	2	8	12	—	3	15	-7	149	1	1	2	2	14	20
Total	60	1508	33	10	12	55	34	5	14	53	2	1510	8	4	10	9	57	88
Latin Union	11	1	2	14
Leman Conference	19	915	27	1	10	38	3	4	7	14	24	939	2	3	13	1	19	38
South France "	18	482	9	—	9	—	—	—	2	2	7	499	5	1	8	—	7	21
Belgian "	10	400	19	2	2	23	2	3	5	10	13	413	5	3	4	—	9	21
East France "	11	369	14	—	5	19	29	2	6	37	-18	351	3	2	5	1	10	21
North France "	10	292	35	5	3	43	—	1	3	4	80	331	4	3	6	—	12	25
Italian Mission	12	378	19	—	—	19	9	—	1	10	9	387	6	3	12	1	14	36
Algerian "	5	123	3	—	3	6	2	2	2	6	—	123	2	—	5	—	1	8
Total	85	2959	126	8	23	157	45	12	26	88	74	3033	38	16	55	3	72	184

Conference of S. D. A. for the Quarter Ending September 30, 1927.

Tithe	Tithe per Capita	Offerings to Mission (except Sabbath Sch. Off.)	Sabbath School Offerings (12 Sabbaths)	13th Sabbath School Offerings	Mission Offerings per Capita and per Week	Special Offerings (Big Week)	Contributions for Local Church Work	Books and Periodical Sales	No. of Sabbath-Schools	Membership	Average Attendance
20	21	22	23	24	25	26	27	28	29	30	31
Ls. 21527.08 Emk. 712240.00 Lt. 3090.00	10.25 518.00 18.84	5167.25 92773.50 6466.87	1859.60 128742.27 543.11	482.28 37273.12 117.70	0.27 14.88 3.14	66.00 6044.00 15.00	1690.91 232786.00 162.11	12215.00 334955.00 —	68 25 10	1707 1265 183	1040 885 180
Ls. 82981.93 \$ 6355.90	9.06 1.75	9745.65 1880.97	3913.22 755.26	1056.59 208.92	0.31 0.06	157.05 30.81	4986.04 968.16	28737.98 4584.64	108	3155	2055
£ 3642.19. 5 " 1978. 8. 3	1. 7. 9 1. 1. 9	1888.13. 9 1581.14. 0	546.14. 0 827.19.11	215. 0. 5 107. 0. 8	0. 1. 7 0. 1. 7	8. 1. 2 7. 7. 2	881. 7. 2 177. 2. 1	2808. 4. 2 2347.15. 0	61 57	2759 1777	2045 1373
£ 5621. 7. 8 \$ 27875.90	1. 5. 3 6.16	3470. 7. 9 16906.65	874.13.11 4259.76	322. 1. 1 1569.23	0. 1. 7 0.89	15. 8. 4 75.03	558. 9. 3 2714.12	5155.19. 2 25109.51	118	4536	3418
SFr. 28101.27 Rmk. 26224.49 " 16185.64 " 17983.73 " 30467.24 " 23240.41 Sh. 21989.86 Rmk. 2862.80	26.97 16.87 17.08 14.68 16.68 16.12 23.00 16.74	27538.00 16726.99 10797.21 7563.23 12209.73 11062.35 5047.80 1198.60	3880.69 3789.28 2857.76 2569.40 4173.85 2910.52 2596.74 210.62	1111.46 988.25 491.40 390.49 1220.14 401.48 417.41 51.54	2.05 1.06 1.10 0.67 0.74 0.77 0.65 0.65	— —	8573.35 5151.65 3007.78 3977.93 5490.44 3723.56 2042.31 64.60	34881.00 24962.00 11438.00 16326.00 16833.00 21905.00 21241.00 1954.00	29 45 21 23 33 22 28 1	969 1767 1018 1302 1953 1505 893 182	650 1845 685 794 1371 900 618 184
Rmk. 152650.71 \$ 86855.00	16.55 3.94	81775.37 19480.76	20686.35 4926.68	4689.80 1117.81	0.89 0.21	— — — — — —	25515.33 6075.08	133303.30 31428.50	197	9589	6447
Kč. 67704.85 " 77526.44 " 27764.80 " 16854.90	76.24 129.64 94.12 44.24	32315.85 59556.34 17639.05 10034.75	9893.75 8098.17 2361.82 2537.00	3143.55 1968.40 963.20 623.65	3.93 8.96 5.44 2.66	— — — — — — — — — — — —	7203.90 10951.18 2560.75 2412.90	33128.50 37545.80 74313.50 35893.60	28 27 12 15	960 635 304 370	850 472 241 280
Kč. 189851.02 \$ 5642.80	87.81 2.61	119545.99 3553.34	23390.74 695.22	6693.80 198.95	5.32 0.16	— — — — — —	23128.73 685.30	135881.40 5548.70	82	2269	1843
Rmk. 47019.57 " 33240.29 " 17966.01 " 42442.98 " 17625.63 " 12131.47 " 19154.24 " 49122.24	20.00 15.69 14.79 20.41 13.91 10.44 13.80 21.13	19570.30 10840.47 11639.46 20501.06 11361.36 10668.11 9605.77 19151.07	3855.10 3181.71 2421.10 5168.91 2326.92 2980.98 1997.85 5773.48	841.05 608.58 481.60 1282.32 463.61 616.14 348.37 1061.29	0.79 0.54 0.92 1.02 0.85 0.54 0.64 0.86	33.35 145.85 3.00 553.40 30.50 44.13 60.15 90.10	10520.89 4035.77 2069.47 6162.98 2923.46 2766.91 2553.20 6669.73	16373.00 18280.00 10333.00 18353.00 10748.00 11400.00 9610.00 14767.00	30 57 38 41 32 64 46 65	2467 2102 1339 2308 1353 2191 1501 2917	1667 1527 1042 1698 1013 1503 1065 2157
Rmk. 247822.43 \$ 59020.00	16.71 3.98	113387.60 27015.16	27706.05 6599.07	5702.96 1359.16	0.77 0.18	960.48 228.62	37701.91 8976.65	110069.00 26206.91	373	16178	11532
Pengö 9894.76 " 11521.29 " 2215.34	13.58 18.08 14.88	1963.42 3606.52 862.40	1393.99 1636.64 481.19	368.95 445.45 124.17	0.39 0.29 0.72	— — — — — — — — —	1891.19 3659.78 323.83	9155.70 12928.21 9602.47	26 20 13	684 558 150	539 512 123
Pengö 23571.39 \$ 4114.10	15.63 2.73	6432.34 1124.35	3511.82 612.91	938.57 163.88	0.59 0.10	— — — — — —	5374.80 933.12	31686.33 5539.57	59	1392	1224
SFr. 35254.67 FFr. 37432.90 BFr. 68773.02 FFr. 37314.50 " 45125.40 Lire 28075.45 FFr. 4882.55	38.53 77.66 166.98 101.12 154.54 61.05 39.70	13440.33 44941.85 29628.10 34522.05 36547.05 11446.60 4516.25	5467.45 6545.00 5435.75 4573.45 4593.80 3251.65 1407.85	1599.88 1313.85 1923.30 3139.45 2323.45 899.65 744.40	1.73 8.53 7.11 8.85 11.67 3.13 4.17	112.65 253.45 — — — 210.75 537.00 46.50 — — —	31450.76 — — — — — — — — — — — — 1303.65 — — —	39538.66 45303.75 57276.35 63418.95 56807.50 49964.65 3451.50	23 23 11 12 10 26 13	603 416 374 262 217 371 135	538 345 354 262 217 333 108
SFr. 77136.70 \$ 14837.40	26.07 5.03	45554.00 8791.92	10745.95 2073.96	3769.47 727.45	1.57 0.30	331.06 63.90	31817.73 6142.42	96756.28 13678.82	118	2499	2157

Statistical Report of the European Division of the

Name of Conference or Mission	No. of Churches	Previous Membership	By baptism	By vote	By letter	Total gain	By apostasy	By death	By letter	Total losses	Net gain	Present Membership	Ordained Ministers	Licensed Ministers	Lic. Missionaries	Other Workers	Colporteurs	Total Workers
1	2	3	4	5	6	7	8	9	10	11	12	13	14	15	16	17	18	19
Polish Union	1	2	..	3
Posanian Conference	15	359	3	..	4	7	1	..	2	3	4	363	4	1	4	1	12	22
Silesian "	20	723	32	32	32	760	1	3	6	1	5	16
Warsaw Mission "	38	815	36	3	2	41	4	..	10	14	27	842	5	3	7	1	12	28
Total	73	1902	71	3	6	80	5	..	12	17	63	1965	11	7	17	5	29	69
Rumanian Union	3	2	3	4	..	12
Muntanian Conference	79	2785	178	3	63	244	31	10	57	98	146	2931	9	4	15	2	9	39
Moldavian "	48	1748	96	5	12	113	35	6	17	58	55	1803	5	2	11	2	8	27
Transylvanian "	85	1995	94	9	9	112	8	5	17	30	82	2077	4	2	9	2	5	23
Banat-Crisana "	35	916	65	1	18	84	14	2	21	37	47	963	4	1	5	3	9	22
Total	247	7444	433	18	102	553	88	23	112	223	330	7774	25	11	43	13	31	123
Scandinavian Union	4	2	..	6
Danish Conference	44	2587	71	6	3	80	15	13	9	37	43	2630	7	3	9	2	28	49
Norwegian "	49	2265	47	7	1	55	9	9	8	26	29	2294	9	1	6	1	33	50
Swedish "	45	1808	41	17	3	61	12	10	1	23	33	1846	6	2	6	1	31	46
Finnish "	25	1313	124	7	..	131	..	7	1	8	123	1436	4	2	2	2	52	62
Total	163	7973	283	37	7	327	36	39	19	94	233	8206	30	8	23	8	144	213
West German Union	2	24	..	26
Hanover Conference	56	2171	31	4	18	53	32	5	14	51	2	2173	9	4	6	1	39	59
Hansa "	52	2284	35	4	17	56	29	6	16	51	5	2239	7	2	10	1	32	52
Hess. Westphal. "	54	1776	21	4	19	44	43	5	19	67	23	1753	7	1	8	1	34	51
Rhenish "	57	2313	38	9	38	85	36	6	38	80	5	2318	8	1	11	1	46	67
Thuringian "	60	2206	32	3	14	49	15	3	16	34	15	2221	9	1	11	1	40	62
Holland "	26	800	12	1	3	16	7	1	3	11	5	805	3	3	5	..	19	30
Total	305	12050	169	25	109	303	162	26	106	294	9	12059	45	12	51	29	210	347
Iberian Union Mission
West Spanish Mission	3	78	4	..	2	6	3	3	3	81	2	2	2	1	7	14
East Spanish "	4	186	2	2	2	1	..	3	..	185	3	1	4	..	6	14
Portuguese "	4	181	11	..	4	15	2	1	7	10	5	186	2	4	9	15
Total	11	445	15	..	8	23	7	2	7	16	7	452	7	7	6	1	22	43
Jugoslavian Union Mission
Adriatic Mission	22	380	23	2	16	41	12	1	7	20	21	401	2	..	3	..	19	24
Voivodina "	36	483	33	2	8	43	9	..	9	18	25	508	2	..	2	..	26	30
Sava "	10	180	3	..	1	4	4	180	1	1	1	..	11	14
Total	68	1043	59	4	25	88	21	1	20	42	46	1089	5	1	6	..	56	68
Bulgarian Mission	13	264	7	..	9	16	3	1	13	17	..	263	2	6	..	2	14	24

the outpoured wine is decently disposed of. In no case should these be distributed for consumption on private tables.

Note. — Only unfermented wine and unleavened bread should be used in the Lord's Supper. The wine can usually be purchased without difficulty. The following recipes for making the wine and the unleavened bread may be of service to some churches:

Recipe for Unfermented Wine.

Secure good grapes. The small wine grape is preferable. Strip the grapes from the stem, and stew them in an enameled saucepan till brought to a boiling heat. Strain through a coarse cloth. Then boil the juice for fifteen minutes. Just before it boils, skim off all the scum that rises. When at boiling heat, pour into strong bottles, which have been thoroughly cleansed and kept warm that they

may receive the hot wine without breaking. Fill to within half an inch of the cork, and cork immediately with good solid corks. Cut off the cork close to the bottle, and seal with sealing wax. Then set away in a dark place, and do not move the bottles about unnecessarily.

Unleavened Bread.

(Sufficient for a small church)

Ingredients. — Three cups of white flour, half a cup of thick cream, a pinch of salt, and a little water.

Put the flour into a dish, add the salt, and rub in the cream thoroughly; then wet with water as cold as possible, till it is of the consistency of stiff pie crust. Knead and roll well with the hand for fifteen minutes, roll into cakes about four inches square, and a quarter of an inch in thickness. Mark the cakes into half-inch squares with a knife, so that they can be easily broken,

General Conference of S. D. A. for the Quarter Ending September 30, 1927.

Tithe	Tithe per Capita	Offerings to Mission (except Sabbath Sch. Off.)	Sabbath School Offerings (12 Sabbaths)	13th Sabbath School Offerings	Mission Offerings per Capita and per Week	Special Offerings	Contributions for Local Church Work	Books and Periodical Sales	No. of Sabbath Schools	Membership	Average Attendance
20	21	22	23	24	25	26	27	28	29	30	31
Zl. 7091.13	19.75	285.12	1864.56	194.85	0.93	32.80	---	4763.02	25	359	256
" 11476.23	15.76	2653.14	1948.92	337.73	0.44	88.06	---	1908.55	48	866	693
" 10053.80	12.34	1825.08	2147.73	448.75	0.45	86.55	---	5547.90	53	1065	829
Zl. 28621.16	15.05	6885.05	5461.21	1031.33	0.55	207.41	---	12219.47	121	2290	1778
\$ 3203.20	1.68	770.70	611.35	115.44	0.06	23.22	---	1368.36			
Lei 1264813.65	454.15	229795.10	151344.50	57291.75	12.57	16548.00	153628.25	199024.00	186	4427	3229
" 466261.30	266.74	32586.25	57858.25	19651.25	4.85	180.00	38838.00	107736.00	48	1901	1468
" 469974.99	235.57	46718.60	50622.20	17060.25	4.49	2304.00	---	85919.00	114	1856	1300
" 283678.25	309.69	38623.50	25447.25	11060.00	6.51	2400.00	31705.90	102461.00	34	1002	830
Lei 2484728.19	333.79	347723.45	285272.20	105063.25	7.85	21332.00	224232.15	495140.00	382	9186	6827
\$ 15346.30	2.06	2147.55	1761.84	648.87	0.05	131.75	1319.00	2993.83			
D. Kr. 48089.86	18.58	12331.86	6682.44	3542.60	0.84	2675.57	1576.18	33316.32	71	2369	1824
N. Kr. 36709.90	16.21	7140.81	6168.51	2132.06	0.60	2133.90	2764.87	51433.40	55	1844	1200
Sw. Kr. 24228.13	13.40	9629.96	4479.10	1533.31	0.76	2166.53	1002.33	37855.43	52	1536	1146
F. Mk. 128438.83	97.82	48531.85	17641.73	6973.97	4.70	7002.75	6630.90	415895.50	46	1134	1002
Sw. Kr. 120099.00	15.06	33487.30	18333.54	7906.86	0.65	7615.96	5887.13	161953.77	224	6883	5172
\$ 32219.00	4.04	8983.63	5052.48	2121.17	0.17	2043.13	1578.30	43419.24			
Rmk. 37322.01	17.19	22706.83	5244.59	855.87	1.02	166.80	4330.66	32423.00	56	2431	1710
" 45945.42	19.24	22633.78	4721.36	1106.56	0.97	474.50	5710.37	24491.00	52	2434	1759
" 28402.16	15.99	16292.35	4082.27	756.20	0.92	115.33	4900.99	23537.00	53	1857	1329
" 48705.43	17.31	22733.53	5416.32	823.10	0.80	147.33	6097.45	32473.00	56	2967	1986
" 36851.09	16.70	24039.74	5226.46	1067.47	1.06	157.67	5013.88	27958.00	60	2592	1331
hil 9045.10	11.30	3640.23	1047.86	166.16	0.46	---	---	7500.00	25	935	645
Rmk. 210418.56	17.46	114403.87	26452.20	4893.35	0.93	1061.93	25358.85	155733.00	302	13316	9260
\$ 50112.40	4.15	27260.93	6299.97	1166.32	0.22	252.96	6037.70	37055.66			
Pes. 2670.90	34.24	493.65	440.69	211.25	1.20	81.02	---	16602.70	6	67	64
" 6174.35	33.19	664.70	1135.00	378.50	0.92	41.15	---	7033.65	9	161	133
" Esc. 9616.96	53.14	2268.00	1666.20	414.60	1.85	---	---	Pes 9967.16	4	154	134
Pes. 11778.45	26.47	1850.10	2083.89	716.20	0.83	122.17	---	33653.51	19	382	381
\$ 2023.60	4.54	317.71	353.11	122.96	0.14	20.96	---	5674.33			
Dinar 43402.00	114.21	3569.50	2226.00	859.70	1.35	---	---	92321.00	30	464	415
" 67906.60	140.59	6344.70	5195.85	1683.80	2.10	---	---	65960.00	40	644	510
" 23189.40	128.33	1959.50	2018.65	416.35	2.03	---	---	44492.00	14	231	200
Dinar 134498.00	128.95	11373.70	9440.50	2964.35	1.79	---	---	202773.00	84	1339	1125
\$ 2362.20	2.26	208.54	165.80	52.08	0.03	---	---	3620.95			
Leva 59143.15	224.02	13955.50	10783.60	5430.10	8.79	---	5181.35	87010.00	24	309	260
\$ 428.10	1.62	101.00	73.05	39.30	0.06	---	37.54	625.97			

and prick each square to prevent blistering. Lay on baking tin previously floured, and bake in a quick oven taking care not to scorch or burn.

Receiving members into the church.

On the occasion of members' being received into the church, either by baptism or by letter, the following plan may be carried out:

The applicants for membership should be called to the front of the church, and the vote taken for their reception. The minister or elder should then step down from the rostrum, and give each new member the right hand of fellowship on behalf of the church, expressing to each in order the

gladness of the church in receiving them into its fellowship, and wishing them every blessing and prosperity in their new relationship, also pledging to them the interest and prayers of their fellow believers.

The marriage service.

Note. — Among Seventh-day Adventists, only ordained ministers are authorized to perform the marriage ceremony. Every minister should ascertain the law of the State or country where he may reside, making certain that he is properly registered and legally empowered to perform marriages before officiating. He must also have in hand the license from the marriage license clerk, authorizing the parties to be married.

Statistical Report of the European Division of the General

Name of Conference or Mission	No. of Churches	Previous Membership	By baptism	By vote	By letter	Total gains	By apostasy	By death	By letter	Total losses	Net gain	Present Membership	Ordained Ministers	Licensed Ministers	Lic. Missionaries	Other Workers	Colporteurs	Total Workers
	2	3	4	5	6	7	8	9	10	11	12	13	14	15	16	17	18	19
*ALLRUSSIAN UNION													2	—	—	13	—	15
Allrussian Union District	5	305	45	—	3	48	3	—	9	12	36	341	2	—	6	—	—	8
North Russian Union													1	1	..	1	..	3
Neva Conference	22	403	26	4	16	46	3	3	9	15	31	434	3	1	2	—	—	6
North West Russ. Conf.	15	259	17	2	—	19	—	—	12	12	7	266	2	1	—	—	—	3
Upper Volga Conference	13	267	12	—	3	15	2	—	1	3	12	279	2	—	3	—	—	5
White Sea Mission	4	23	—	—	—	—	—	—	—	—	—	23	—	—	—	—	—	—
Total	54	952	55	6	19	80	5	3	22	30	50	1002	8	3	5	1	—	17
All Ukrainian Union													1	4	..	5
Black Sea Conference	32	563	29	6	6	41	13	2	11	26	15	578	2	4	1	—	—	7
Central Dniepr Conference	58	1202	62	4	11	77	35	2	12	49	28	1230	3	3	3	—	—	9
Podol Conference	56	1246	48	4	26	78	13	4	20	37	41	1237	3	1	3	—	—	7
Volhynian Conference	30	472	11	6	18	35	8	—	16	24	11	433	2	—	2	—	—	4
Asow Conference	30	536	5	2	15	22	13	—	6	19	3	539	2	3	1	—	—	6
Lower Dniepr Mission	11	317	5	1	3	9	7	—	6	13	-4	313	1	1	2	—	—	4
Upper Dniepr Mission	10	122	20	2	—	22	2	1	2	5	17	139	1	2	1	—	—	4
Kiev District	14	341	2	2	15	19	3	—	17	20	-1	340	1	2	2	—	—	5
Total	241	4799	182	27	94	303	94	9	90	193	110	4909	16	16	15	4	—	51
South East Russian Union													1	3	..	4
Cuban Black Sea Conference	27	524	56	10	9	75	35	—	7	42	33	557	1	1	3	—	—	5
Central Caucasian Confer.	29	697	17	4	13	34	28	1	21	50	-16	631	3	1	1	—	—	5
Transcaucasian Mission	12	304	21	11	3	35	7	—	10	17	18	322	1	1	3	—	—	5
Don Mission	25	597	26	6	10	42	1	—	6	7	35	632	5	1	2	—	—	8
Crimean Mission	8	208	9	1	1	11	—	3	—	3	8	216	3	1	1	—	—	5
Total	101	2330	129	32	36	197	71	4	44	119	78	2408	14	5	10	3	—	32
East Russian Union													1	2	..	3
German Volga Conference	29	641	43	3	7	53	1	3	3	7	46	637	2	—	—	—	—	3
Lower Volga Conference	13	319	18	4	4	26	2	1	3	6	20	339	2	1	1	—	—	4
Central Volga Mission	5	104	2	1	5	8	2	—	—	2	6	110	—	1	2	—	—	3
Central Asiatic "	10	262	10	5	5	20	5	—	5	10	10	272	1	1	1	—	—	3
Total	57	1326	73	13	21	107	10	4	11	25	82	1408	6	3	5	2	—	16
Siberian Union													1	2	..	3
Omsk District	7	193	13	—	—	13	1	—	3	4	9	202	—	1	—	—	—	1
Central Siberian Conference	37	666	—	3	1	4	8	—	13	21	-17	649	3	1	—	—	—	4
Irtysk Conference	30	563	14	12	11	37	6	—	15	21	16	579	2	1	1	—	—	4
West Siberian Conference	19	513	12	3	2	17	31	2	4	37	-20	493	2	—	2	—	—	4
North Siberian Mission	8	229	8	2	4	14	4	—	7	11	3	232	1	—	2	—	—	3
East "	6	149	11	—	—	11	2	1	—	3	8	157	1	1	—	—	—	2
Total	107	2313	58	20	18	96	52	3	42	97	-1	2312	10	4	5	2	—	21
Dalne Wostotschn. Un. Miss.													1	1	..	2
Coastal Region	23	444	15	3	15	33	3	—	9	13	20	464	1	1	3	—	—	5
Amur Mission	2	33	—	—	—	—	—	—	—	—	—	33	—	—	1	—	—	1
Transbaikalian Mission	3	19	4	—	—	4	—	—	2	2	2	21	1	—	—	—	—	1
Total	28	496	19	3	15	37	3	1	11	15	22	518	3	1	4	1	—	9
• Grand Totals for Russia	598	12521	561	101	206	868	238	24	229	491	377	12898	61	32	50	26	—	169

* Report for the second quarter of 1927.

Conference of S. D. A. for the Third Quarter 1927.

Tithe	Tithe per Capita	Offerings to Mission (except Sabbath-Sch. Off.)	Sabbath School Offerings (12 Sabbaths)	13th Sabbath School Offerings	Mission Offerings per Capita and per Week	Special Offerings	Local Church Work	Book Sales	No. of Sabbath Schools	Membership	Average Attendance
20	21	22	23	24	25	26	27	28	29	30	31
Rbl. 3576.97 \$ 1843.80	11.78 6.04	79.24 40.84	390.98 201.51	28.92 14.90	0.12 0.06	— — — —	298.60 158.90	— — — —	5	370	354
Rbl. 2050.26 797.65 1301.42 86.00	5.09 3.08 4.87 3.70	78.13 30.06 33.02 1.50	227.53 95.47 123.15 1.50	16.97 6.75 12.62 1.00	0.06 0.04 0.05 0.01	— — — — — — — —	107.00 80.90 68.20 —	— — — — — — — —	22 15 13 4	486 282 325 25	508 269 305 27
Rbl. 4285.33 \$ 2138.16	4.45 2.29	142.71 78.56	447.65 230.75	37.84 19.24	0.05 0.02	— — — —	256.10 132.00	— — — —	54	1118	1109
Rbl. 1810.32 1797.75 1745.05 990.61 1376.88 675.14 471.91 1167.49	3.21 1.49 1.40 1.97 2.57 2.13 3.86 3.42	49.93 37.13 53.29 25.50 43.31 13.67 6.84 33.09	251.58 289.81 375.38 123.21 209.84 104.07 78.53 158.72	21.77 24.14 71.04 14.11 22.69 4.66 8.50 13.66	0.04 0.02 0.03 0.02 0.04 0.03 0.05 0.04	— — — — — — — — — — — — — — — —	336.00 166.00 292.50 68.90 165.00 76.70 47.60 121.60	— — — — — — — — — — — — — — — —	32 58 56 30 30 11 10 14	666 1457 1234 582 593 367 149 432	652 1458 1258 464 284 299 112 363
Rbl. 9975.10 \$ 5141.80	2.08 1.07	267.76 138.02	1586.14 817.60	180.57 93.07	0.03 0.01	— — — —	1274.30 656.80	— — — —	241	5430	4890
Rbl. 664.13 858.10 1020.63 1545.29 789.65	1.26 1.23 3.36 2.58 3.79	16.37 21.90 29.03 123.21 49.41	120.74 106.88 156.13 247.35 109.12	5.63 10.66 11.17 19.50 9.63	0.02 0.01 0.05 0.05 0.06	— — — — — — — — — —	100.40 83.40 69.00 148.10 35.90	— — — — — — — — — —	27 29 12 25 8	611 750 857 743 239	629 793 339 738 251
Rbl. 4877.80 \$ 2514.33	2.09 1.07	289.92 123.67	740.22 381.55	56.59 29.17	0.03 0.01	— — — —	436.80 225.10	— — — —	101	2700	2800
Rbl. 999.75 774.13 469.87 978.94	1.56 2.42 4.51 3.73	18.61 21.53 16.19 16.88	113.15 31.53 52.82 188.47	14.01 5.88 1.95 4.91	0.02 0.02 0.05 0.05	— — — — — — — —	131.30 36.80 52.20 60.60	— — — — — — — —	29 13 5 10	763 395 124 335	600 281 38 271
Rbl. 3222.69 \$ 1661.19	2.43 1.25	73.21 37.73	385.97 198.95	26.25 13.53	0.03 0.01	— — — —	280.90 144.80	— — — —	57	1617	1240
Rbl. 597.23 787.99 743.82 555.28 519.95 401.44	3.09 1.11 1.32 1.08 2.27 2.69	17.35 25.36 17.26 23.36 9.18 9.25	98.07 136.15 104.79 102.78 33.55 52.59	4.32 14.65 9.33 6.57 6.70 4.58	0.05 0.02 0.02 0.02 0.03 0.03	— — — — — — — — — — — —	81.30 112.00 60.80 125.50 36.60 20.20	— — — — — — — — — — — —	7 37 30 19 8 6	225 680 604 524 256 179	215 304 235 213 176 79
Rbl. 3555.71 \$ 1882.84	1.54 0.79	101.76 52.45	577.93 297.90	46.15 23.78	0.03 0.01	— — — —	436.40 224.90	— — — —	107	2468	1222
Rbl. 1606.03 179.35 194.35	3.61 5.43 10.22	41.32 3.01 1.81	297.25 17.02 17.10	25.36 1.47 2.01	0.06 0.05 0.08	— — — — — —	131.90 6.00 5.90	— — — — — —	23 2 3	510 43 24	440 39 20
Rbl. 1979.73 \$ 1020.48	4.00 2.05	46.14 23.78	331.37 170.81	28.34 14.36	0.06 0.03	— — — —	193.80 100.00	— — — —	28	577	499
Rbl. 31423.33 \$ 16197.60	2.51 1.29	950.74 490.05	4460.21 2299.07	404.66 208.55	0.03 0.01	— — — —	3176.90 1637.50	— — — —	593	14280	12114

Statistical Report of the European Division

Name of Conference or Mission	No. of Churches	Previous Membership	By baptism	By vote	By letter	Total gains	By apostasy	By death	By letter	Total losses	Net gain	Present Membership	Ordained Minist.	Licensed Minist.	Lic. Missionaries	Other Workers	Colporteurs	Total Workers	
	2	3	4	5	6	7	8	9	10	11	12	13	14	15	16	17	18	19	
East African Union Mission																			
Kenya	6	823	26	1	7	34	2	2	7	11	28	846	2	2	4	2	—	10	7
Mwanza	5	231	16	—	1	17	2	—	—	2	15	246	3	1	2	—	—	3	3
Pare	4	259	—	—	16	16	1	1	14	16	—	259	—	1	1	—	—	—	3
Ruanda-Urundi	4	88	22	—	10	32	—	—	10	10	22	110	2	2	1	—	—	4	4
Uganda	1	6	—	—	—	—	—	—	—	—	—	6	1	1	—	—	—	—	1
Ethiopian Union Mission																			
* Central Abyssinia	2	44	2	—	—	2	—	—	—	—	2	46	1	2	1	1	—	—	5
* Eastern Abyssinia	1	2	—	—	—	—	—	—	—	—	—	2	1	—	—	—	—	—	1
* Western Abyssinia	1	4	5	—	—	5	—	—	—	—	5	9	2	1	—	—	—	—	3
West African Missions																			
+ Sierra Leone	4	150	—	—	—	—	—	—	—	—	—	150	1	1	2	—	—	—	4
Gold Coast	4	397	—	—	—	—	—	—	—	—	—	397	1	2	2	—	—	—	3
+ Nigeria	4	469	45	—	3	48	—	2	—	2	46	515	1	2	2	—	—	—	5
+ Liberia	—	—	—	—	2	2	—	—	—	—	2	2	—	1	1	—	—	—	2
Egypto-Syrian Mission																			
Egypt	3	90	—	—	—	—	—	—	—	—	—	90	1	1	6	1	2	—	11
Syria	2	84	—	—	1	1	—	—	—	—	1	85	1	1	4	1	—	—	7
Miscellaneous Missions																			
† Eritrea	1	21	—	—	—	—	—	—	—	—	—	21	1	—	—	—	—	—	1
Faroe Islands	1	28	—	—	—	—	—	—	2	2	—	26	—	1	—	—	—	—	1
Greece	2	67	3	2	1	6	—	—	1	5	—	72	2	2	—	—	—	—	5
Iceland	4	255	25	—	—	25	—	—	2	2	23	278	1	1	1	1	—	—	11
Madagascar	1	5	—	—	—	—	—	—	2	2	—	3	1	—	—	—	—	—	2
Mauritius	6	180	—	—	—	—	—	—	1	1	—	179	1	—	—	4	3	—	12
" Mesopotamia	1	19	2	—	—	2	—	—	—	—	—	21	1	—	2	—	—	—	3
Persia	7	140	8	—	—	8	—	—	—	—	8	148	2	—	1	—	—	—	3
Turkey	1	63	—	—	—	—	—	—	—	—	—	63	1	—	1	1	—	—	4
Totals	65	3425	154	3	41	198	5	7	37	49	149	3574	26	19	35	11	13	104	

* The financial report includes the fourth quarter 1926 and the second quarter of 1927. + No financial report received.
 † The financial report includes first and second quarters 1927. * Difference in financial report for the third quarter of 1926 added.

Recapitulation for Quarter

Name of Conference or Mission	No. of Churches	Previous Membership	By baptism	By vote	By letter	Total gains	By apostasy	By death	By letter	Total losses	Net gain	Present Membership	Ordained Ministers	Licensed Ministers	Lic. Missionaries	Other Workers	Colporteurs	Total Workers	
	1	2	3	4	5	6	7	8	9	10	11	12	13	14	15	16	17	18	19
1. European Division																			
2. Baltic Union	68	3633	66	4	3	73	33	8	—	42	31	3664	12	—	—	15	—	—	27
3. British Union	64	4442	107	22	29	158	28	18	27	73	85	4527	37	13	35	9	44	118	212
4. Central European Union	197	9213	106	15	66	187	91	27	82	200	—13	9200	42	16	43	31	161	293	
5. Czechoslovakian Union	82	2162	51	3	17	71	23	6	28	57	14	2176	13	5	5	11	62	96	
6. East German Union	376	14835	231	25	509	755	175	29	528	732	23	14858	74	49	23	26	182	354	
7. Hungarian Union	60	1508	33	10	12	55	34	5	14	53	2	1510	8	4	10	9	57	88	
8. Latin Union	85	2959	126	8	23	157	45	12	26	83	74	3033	38	16	55	3	72	184	
9. Polish Union	73	1902	71	3	6	80	5	—	12	17	63	1965	11	7	17	5	29	69	
10. Rumanian Union	247	7444	433	13	102	538	88	23	112	223	330	7774	25	11	43	13	31	123	
11. Scandinavian Union	163	7973	283	37	7	327	36	39	19	94	233	8206	30	8	28	8	144	213	
12. West German Union	305	12050	169	25	109	303	162	26	106	294	9	12059	45	12	51	29	210	347	
13. Iberian Union Mission	11	445	15	—	8	23	7	2	7	16	7	452	7	7	6	1	22	43	
14. Jugoslavian Union Mission	68	1043	59	4	25	88	21	1	20	42	46	1089	5	1	6	—	56	68	
15. Bulgarian Mission	15	264	7	—	9	16	3	1	13	17	—1	263	2	6	—	2	14	24	
16. Missions*	65	3425	154	3	41	198	5	7	37	49	149	3574	26	19	35	11	13	104	
17. Russian Unions*	593	12521	561	101	206	868	238	24	229	491	377	12898	61	32	50	26	—	169	
Totals 3rd Quarter 1927:	2472	85819	2462	278	1172	3912	994	228	1261	2483	1429	87248	453	217	411	203	1215	2499	
„ 3rd „ 1926:	2428	82435	2526	287	1050	3863	1043	190	1250	2483	1380	83815	429	197	382	195	1318	2521	
„ 3rd „ 1925:	2247	77613	2469	311	1421	4201	1030	206	1195	2431	1770	79388	409	190	414	169	1334	2516	
„ 3rd „ 1924:	2063	72602	2841	333	739	3913	632	146	862	1930	1933	74585	387	176	307	237	1266	2378	

* Report for the second quarter 1927.

Missions for the Second Quarter 1927.

Tithe	Tithe per Capita	Offerings to Mission (except Sabb.-Sch. Off.)	Sabbath School Offerings (12 Sabbaths)	13th Sabb. School Offerings	Mission Offerings per Capita and per Week	Special Offering	Local Church Work	Books Sales	S. S.	Membership	Average Attendance
20	21	22	23	24	25	26	27	28	29	30	31
\$ 898.00	1.09	4.25	330.98	40.44	0.08	— —	— —	— —	97	6208	5988
885.80	1.66	— —	102.08	46.48	0.05	— —	— —	— —	33	1149	1841
195.40	0.75	50.55	99.90	26.08	0.05	— —	— —	— —	15	740	760
158.50	1.80	21.33	59.85	50.29	0.11	— —	— —	— —	14	1938	1680
35.40	5.90	— —	— —	— —	— —	— —	— —	— —	1	10	50
583.90	10.67	196.08	122.57	20.94	0.54	14.55	— —	— —	2 1 1	66 33 16	54 30 14
— —	— —	— —	— —	— —	— —	— —	— —	— —	16	414	311
381.90	0.96	— —	137.49	28.03	0.03	— —	— —	— —	24	986	766
— —	— —	— —	— —	— —	— —	— —	— —	— —	23	1095	783
— —	— —	— —	— —	— —	— —	— —	— —	— —	— —	— —	— —
248.00	2.75	65.92	70.95	6.96	0.15	30.62	— —	226.55	5	100	101
231.80	2.75	3.66	29.79	5.75	0.04	14.38	— —	— —	4	88	77
100.30	4.77	11.96	19.80	2.32	0.07	8.09	— —	— —	3	21	45
51.24	1.83	13.96	21.57	4.25	0.11	— —	— —	— —	4	40	38
393.20	5.87	13.76	19.11	12.02	0.09	36.89	— —	— —	2	90	80
953.50	3.74	— —	168.18	15.48	0.05	— —	— —	1746.85	3	245	229
72.50	14.50	5.10	26.65	3.32	0.58	3.22	— —	— —	4	320	150
1354.20	7.52	181.15	46.80	22.80	0.10	— —	— —	119.97	54	711	313
350.40	18.44	88.42	59.85	12.79	0.65	— —	— —	— —	1	32	31
252.10	1.80	42.95	38.62	16.13	0.05	— —	— —	— —	4	144	161
207.20	3.28	16.24	45.24	10.89	0.10	14.35	— —	112.66	3	80	70
\$ 6802.84	1.98	715.33	1399.43	324.97	0.05	122.10	— —	2246.69	314	14476	13527

Ending September 30, 1927.

Tithe	Tithe per Capita	Offerings to Mission (except Sabbath Sch. Off.)	Sabbath School Offerings (12 Sabbaths)	13th Sabbath School Offerings	Mission Offerings per Capita and per Week	Special Offerings	Contributions for Local Church Work	Book and Periodical Sales	No. of Sabbath Schools	Membership	Average Attendance
20	21	22	23	24	25	26	27	28	29	30	31
6355.90	1.75	1880.97	755.26	203.92	0.06	30.31	968.16	4584.64	103	3155	2055
27375.90	6.16	16906.65	4259.76	1569.23	0.39	75.03	2714.12	25109.51	113	4536	3418
36355.00	3.94	19480.76	4926.63	1117.81	0.21	— —	6075.08	31428.50	197	9539	6447
5642.80	2.61	3553.34	695.22	198.95	0.16	— —	685.30	5548.70	82	2269	1843
59020.00	3.98	27015.16	6599.07	1359.16	0.18	228.62	8976.65	26206.91	373	16178	11582
4114.10	2.73	1124.35	612.91	163.88	0.10	— —	933.12	5589.57	59	1392	1224
14887.40	5.03	8791.92	2073.96	727.45	0.30	63.90	6142.42	18678.82	118	2499	2157
3203.20	1.68	770.70	611.85	115.44	0.06	23.22	— —	1368.36	121	2290	1778
15846.30	2.06	2147.55	1761.84	648.87	0.05	131.75	1319.00	2993.83	382	9186	6727
32219.00	4.04	8983.63	5052.48	2121.17	0.17	2043.13	1578.30	48419.24	224	6833	5172
50112.40	4.15	27260.93	6299.97	1166.32	0.22	252.96	6037.70	37055.66	302	13316	9260
2023.60	4.54	317.71	358.11	122.96	0.14	20.96	— —	5674.33	19	322	331
2862.20	2.26	208.54	165.30	52.03	0.03	— —	— —	3620.95	84	1339	1125
428.10	1.62	101.00	78.05	39.30	0.06	— —	— —	625.97	24	309	260
6302.84	1.98	715.33	1399.43	324.97	0.05	122.10	— —	2246.69	314	14476	13527
16197.60	1.29	490.05	2299.07	208.55	0.01	— —	1637.50	— —	593	14280	12114
\$ 282446.34	3.29	119748.64	37948.91	10140.06	0.15	2991.98	37104.89	214101.68	3113	102079	79170
251378.24	2.80	109303.44	37801.02	9427.66	0.15	2096.38	26152.08	213353.67	2948	98525	70113
251685.00	3.24	110813.27	37749.50	8723.74	0.16	4693.75	18247.08	262546.36	2737	87207	66664
213531.10	2.87	112327.01	33900.72	7082.72	0.17	4984.32	7319.46	244637.24	2468	78098	59990

Financial Report of the European Division

	T i t h e		Sabbath School Offerings		13th Sabbath Offerings		Weekly Offerings		Harvest Ingathering	
	Loc.	Curr'y Dollars	Loc.	Curr'y Dollars	Loc.	Curr'y Dollars	Loc.	Curr'y Dollars	Loc.	Curr'y Dollars
	1		2		3		4		5	
East African Union Mission										
Kenya	£ 184.11. 8	\$ 898.00	£ 68. 0.10	\$ 330.98	£ 8. 6. 4	\$ 40.44	—	—	—	—
Mwanza	" 79. 1. 8	" 385.80	" 20.19. 6	" 102.08	" 9.10.11	" 46.48	—	—	—	—
Pare	" 40. 5.10	" 195.40	" 20.10. 9	" 99.90	" 5. 7. 4	" 26.08	—	—	£ 10. 0.10	\$ 48.58
Ruanda-Urundi	" 32.11. 8	" 158.50	" 12. 6. 0	" 59.85	" 10. 6. 8	" 50.29	—	—	" 1.14. 8	" 8.33
Uganda	" 7. 5.10	" 35.40	—	—	—	—	—	—	—	—
Ethiopian Union Mission										
* Central Abyssinia	} 109.15. 0	" 583.90	" 25. 3.11	" 122.57	" 4. 6. 1	" 20.94	£ 8. 0. 7	\$ 39.06	—	—
* Eastern Abyssinia									—	—
* Western Abyssinia									—	—
West African Missions										
** Sierra Leone	" — — —	" — — —	" — — —	" — — —	" — — —	" — — —	—	—	—	—
Gold Coast	" 78.10. 0	" 381.90	" 28. 5. 8	" 137.49	" 5.15. 3	" 28.03	—	—	—	—
** Nigeria	" — — —	" — — —	" — — —	" — — —	" — — —	" — — —	—	—	—	—
** Liberia	" — — —	" — — —	" — — —	" — — —	" — — —	" — — —	—	—	—	—
Egypto Syrian Mission										
Egypt	" 50.17. 6	" 248.00	" 14.11. 8	" 70.95	" 1. 8. 8	" 6.96	£ 4. 2.10	" 20.14	£ 3. 1. 1	\$ 14.85
Syria	" 47.15. 0	" 281.80	" 6. 2. 6	" 29.79	" 1. 8. 7	" 5.75	" 0.15. 0	" 3.66	—	—
Miscellaneous Missions										
+ Eritrea	Lira 1935.00	" 100.30	Lira 881.60	" 19.80	Lira 44.50	" 2.82	Lira 42.00	" 2.23	—	—
Faroe Islands	DKr. 190.97	" 51.24	DKr. 80.39	" 21.57	DKr. 15.85	" 4.25	DKr. 12.00	" 8.23	DKr. 40.00	" 10.73
Greece	Dr. 24210.00	" 393.20	Dr. 1177.65	" 19.11	Dr. 740.85	" 12.02	Dr. 847.50	" 13.76	—	—
Iceland	IKr. 4309.90	" 958.50	IKr. 760.62	" 168.18	IKr. 70.00	" 15.48	—	—	—	—
Madagascar	FFr. 1644.50	" 72.50	FFr. 602.70	" 26.65	FFr. 74.65	" 3.82	—	—	—	—
Mauritius	Rs. 3989.20	" 1354.20	Rs. 181.80	" 46.80	Rs. 64.23	" 22.80	—	—	—	—
++ Mesopotamia	£ 72. 0.10	" 350.40	£ 12. 6. 0	" 59.85	£ 1. 7.10	" 12.79	—	—	—	—
Persia	Krs. 2381.50	" 252.10	Krs. 857.70	" 83.62	Krs. 149.20	" 16.13	—	—	—	—
Turkey	£ 42.11. 8	" 207.20	£ 9. 6. 0	" 45.24	£ 2. 4. 9	" 10.89	£ 1.18. 0	" 8.02	—	—
		\$ 6802.84		\$ 1399.43		\$ 324.97		\$ 90.10		\$ 82.76

* Includes fourth quarter of 1926 and second quarter of 1927. ** No report received.
 + Includes first and second quarters of 1927. ++ Includes an omission in third quarter's report of 1926.

Report of the Home Missionary

	Baltic Union		British Union		Bulgarian Mission		Central Eu-rop. Union		East Ger-man Union		West German Union		Czechoslo-vak. Union		Faroe Isl. Mission	
	Adult	Y. P.	Adult	Y. P.	Adult	Y. P.	Adult	Y. P.	Adult	Y. P.	Adult	Y. P.	Adult	Y. P.	Adult	Y. P.
No. of Church. & Comp.	67		100		14		191		374		305		77		—	
" " " Reporting	46		59		13		176		370		289		—		—	
Total " Members	3664		4527		263		9200		14858		12059		2176		26	
Membs. of Y. P. Soc. (incl. in Church Memb.)	463		887		26		1171		2852		1756		378		11	
No. of Church. observing Miss. Sabbath	36		57		18		—		870		—		77		—	
Hold. weekly prayer meet.	32		46		11		95		—		—		—		—	
% of Members Reporting	28 %		14 %		49 %		44 %		63 %		60 %		85 %		25 %	
Report of Missionary Work:																
1) No. of Pers. Reporting	809	214	365	286	112	16	8189	885	7459	1951	5648	1551	687	119	3	4
2) " " Doing Bible or Gosp. Meet. Work	690	—	45	60	64	9	888	116	2548	574	—	—	107	42	1	2
3) " " Report. Med. Miss. Work	295	—	56	7	31	9	104	29	1121	284	—	—	127	18	—	2
4) " " Liter. Work	752	—	223	30	55	14	8712	769	6741	1945	—	—	573	59	—	1
5) Souls Won	13	—	19	18	2	3	19	5	54	23	32	15	19	6	—	—
a) No. of Miss. Visits	8529	1248	2279	955	687	31	17225	1560	24367	7167	20775	4961	7383	881	—	60
b) " " Bible Readings	2708	709	684	812	713	8	9979	1309	19401	4098	15912	2245	6987	1087	24	22
c) " " Pers. tak. to Serv.	681	194	255	136	176	3	285	49	672	133	—	—	542	92	—	—
d) Hours of Christ. Help. Work	1687	845	4551	7505	237	10	3475	391	—	—	—	—	910	222	—	—
e) Treatments Given	754	148	275	324	155	5	1749	104	2831	601	1043	212	410	22	—	—
f) Bouquets Given	—	—	599	309	54	3	—	—	—	—	—	—	—	4	—	—
g) Periodicals Distributed	5978	2516	43011	11186	447	143	85730	24212	210725	59287	176869	45694	8753	2485	35	54
h) Tracts	645	320	17533	15342	9	—	2049	269	3964	499	922	113	4805	68	159	185
i) New Subscriptions to Periodicals	153	46	89	20	5	—	85	12	189	30	—	—	37	10	10	1
j) Books Distributed	309	109	2089	515	9	—	617	98	486	78	560	51	247	34	20	160
k) Miss. Letters Written	343	251	586	623	58	9	1471	351	2153	837	1676	445	553	155	5	—
l) " " Received	107	119	309	351	86	1	793	152	1007	408	684	222	340	89	2	—
Offerings for Home Miss. Work	\$ 53.23		\$ 70.10		\$ 56.72		\$ 611.60		—		\$ 971.98		—		—	

* Report for the 2nd Quarter 1927.
 No Reports have been received from Iceland and the Iberian Union Mission.

Missions for the Second Quarter 1927 specified.

Annual Offerings		Miscellaneous Off.		Week of Sacrifice		Y. P.'s Collection for West Africa		Total Offerings to Foreign Miss.		Percentage of Offer. of Title		'Big Week'-Fund	
Loc. Curr'y	Dollars	Loc. Curr'y	Dollars	Loc. Curr'y	Dollars	Loc. Curr'y	Dollars	Loc. Curr'y	Dollars			Loc. Curr'y	Dollars
6		7		8		9		10		11		12	
£ 0.17. 6	\$ 4.25	—	—	—	—	—	—	£ 77. 4. 8	\$ 375.67	41,8%	—	—	—
0. 7. 0	1.70	—	—	—	—	—	—	80.10. 5	148.56	38,5	—	—	—
—	—	£ 2.18. 5	\$ 13.00	—	—	—	—	86. 5.11	176.58	90,3	—	—	—
—	—	—	—	—	—	—	—	27. 0. 4	131.47	82,9	—	—	—
26. 1. 3	126.80	—	—	£ 6. 4. 3	\$ 30.22	—	—	69.16. 1	339.59	66,3	£ 2. 19. 9	\$ 14.55	—
—	—	—	—	—	—	—	—	84. 0. 6	165.52	43,3	—	—	—
—	—	—	—	—	—	—	—	—	—	—	—	—	—
—	—	£ 6. 7. 2	\$ 80.93	—	—	—	—	29.11. 5	143.83	70,3	£ 6. 6. 0	\$ 30.62	—
—	—	—	—	—	—	—	—	8. 1. 1	39.20	23,1	2.19. 2	14.38	—
—	—	—	—	Lir. 176.05	\$ 9.73	—	—	Lir. 644.15	34.08	42,0	Lir. 166.50	\$ 8.09	—
—	—	—	—	—	—	—	—	DKr. 148.24	39.78	77,6	—	—	—
—	—	—	—	—	—	—	—	Dr 2766.00	44.89	20,8	Dr. 2272.20	\$ 36.89	—
—	—	—	—	—	—	—	—	lKr 830.62	133.66	19,2	—	—	—
—	—	—	—	—	—	—	—	FFr. 792.35	35.07	52,8	FFr. 72.85	\$ 3.22	—
FFr. 115.00	\$ 5.10	—	—	—	—	—	—	Rs. 692.55	250.75	18,5	—	—	—
18. 3. 6	88.42	Rs. 115.93	\$ 41.15	Rs. 380.59	\$ 140.00	—	—	£ 31.17. 4	161.06	45,9	—	—	—
—	—	Krs. 397.25	\$ 42.95	—	—	—	—	Krs. 904.15	97.70	38,7	—	—	—
—	—	£ 2. 1. 10	\$ 8.22	—	—	—	—	£ 15. 5. 7	72.37	41,3	£ 2.19. 0	\$ 14.85	—
\$ 226.27		\$ 136.25		\$ 179.95				\$ 2439.73		37,6 %			\$ 122.10

Department for the Third Quarter 1927.

* Greek Mission	Hungarian Union	Jugoslav. Un. Miss.	Latin Union	* Mauritius Mission	Polish Union	Rumanian Union	Scandinavian Union	Turkish Mission	Totals	Grand Totals	3rd Qu. 1926
Adult Y.P.	Adult Y.P.	Adult Y.P.	Adult Y.P.	Adult Y.P.	Adult Y.P.	Adult Y.P.	Adult Y.P.	Adult Y.P.	Adult Y. P.	both	both
—	60	68	102	10	73	246	275	2	—	—	—
—	56	57	54	6	—	170	145	—	—	—	—
—	1510	1089	3033	179	1965	7774	8206	63	—	—	—
—	252	—	—	—	389	—	981	20	—	—	—
—	60	—	26	6	—	146	143	—	—	—	—
—	2	—	7	3	—	123	—	—	—	—	—
—	58 %	52 %	33 %	90 %	34 %	52 %	19 %	40 %	—	45 %	49 %
—	709 175	570	829 169	121 42	487 177	3191 829	1310 232	16 10	25450 6610	32060	33588
—	549 135	—	81 15	121 42	—	2309 490	464	2	7869 1435	9354	6962
—	274 76	—	36 6	—	—	1506 405	299	—	3849 831	4680	3476
—	314 72	—	77 6	121 9	—	1380 257	1135	—	15034 3212	18296	8532
—	16 1	—	5	—	8 8	225 22	18 4	2	432 105	537	628
340 223	5602 1313	2904	5206 1027	375 31	2313 1267	22073 5322	3325 725	142 44	118974 26815	145789	138810
418 443	8093 2433	4381	2538 656	813 136	3902 1371	27355 7975	3342 427	166 99	107361 23780	131141	141016
—	857 266	—	174 8	13 17	1 46	4371 2041	226 30	18 2	8271 3017	11238	9733
—	1250 637	549	720 349	102 327	5	16376 6604	1773 151	110 56	32245 16597	43842	32275
42 3	1407 169	—	740 77	82 69	70 12	2560 370	659 149	13 4	12790 2769	15559	11144
—	254 96	—	133 47	—	3 19	318 165	538 90	—	1899 733	2632	2466
170 9	2410 631	321 633	12949 5364	1624 6	722 327	3099 1061	63789 13464	—	621632 167127	738759	699819
98 145	495 243	638	1437 759	33 9	438 33	2419 631	39066 5693	57 45	74822 24399	99221	56178
—	20 25	—	127 11	—	—	92 51	194 38	—	1001 244	1245	1902
55 34	139 101	279	537 232	45 8	63 42	959 275	2050 3742	35 14	3559 5493	14052	10723
16 30	545 355	301	673 212	13 18	133 27	653 309	1094 245	10 4	10293 3921	14219	15069
8 7	383 175	158	475 176	7 17	43 16	602 166	477 115	5 1	5441 2015	7456	7800
—	—	—	\$ 802.17	—	\$ 173.30	\$ 238.16	\$ 1575.64	—	\$ 4557.90	—	—

* Report for the 2nd Quarter 1927.

Specification of Mission Offerings for the Third Quarter 1927.

	Sabb. Sch. Off. (12 Sabbaths)	13th Sabbath Off.	Weekly Off.	Harvest Ing. Offerings	Annual Off.	Miscell. Off.	Week of Sacrif. Offerings	V. P.'s Coll. for West Africa	Total Off. for Foreign Missions	Percentage of Off. of Tithe	"Big Week" Fund	Europ. Relief Fund
	1	2	3	4	5	6	7	8	9	10	11	12
1. Baltic Un. Conf.	\$ 755.26	203.92	809.08	859.80	16.29	59.06	636.74	—	2840.15	44.6%	30.81	—
2. British "	4259.76	1569.23	—	13536.15	—	459.14	2911.36	—	22735.64	88.0	75.03	—
3. Ctr. Eur. Un. "	4926.63	1117.81	1580.09	12504.36	—	545.55	4850.76	—	25525.20	70.2	—	—
4. Czechosl. "	695.22	198.95	189.19	1957.95	—	—	1406.20	—	4447.51	78.8	—	—
5. East Germ. "	6599.07	1359.16	2673.76	18636.88	6.43	754.73	4943.36	—	34973.39	59.2	228.62	—
6. Hungarian "	612.91	163.88	80.30	—	—	91.49	952.56	—	1901.14	46.2	—	—
7. Latin "	2073.96	727.45	224.99	7843.65	—	66.16	1157.12	—	11593.33	77.8	63.90	—
8. Polish "	611.35	115.44	112.43	160.91	—	35.10	462.26	—	1497.49	46.7	23.22	—
9. Rumanian "	1761.84	648.87	429.18	154.60	4.60	25.08	1534.09	—	4558.26	29.7	131.75	—
10. Scandinavian "	5052.48	2121.17	182.33	8885.05	2.00	1.48	412.77	—	16157.28	50.1	2045.13	—
11. West Germ. "	6299.97	1166.32	1833.98	20516.29	10.78	706.76	4193.22	—	34727.27	69.2	252.96	—
12. Iberian U.-M. "	358.11	122.96	1.72	1.98	—	42.99	271.02	—	798.78	39.4	20.96	—
13. Jugoslav. U.-M. "	165.80	52.08	50.44	—	—	—	158.10	—	426.42	18.0	—	—
14. Bulgarian Miss. "	78.05	39.30	7.99	—	0.72	—	92.29	—	218.35	51.0	—	—
15. Missions	1399.43	324.97	90.10	82.76	236.27	136.25	179.95	—	2439.73	37.6	122.10	—
16. Russian Unions	2299.07	208.55	—	—	—	490.05	—	—	2997.67	18.5	—	—
Totals	\$ 37948.91	10140.06	7765.58	84140.88	267.04	3418.84	24161.80	—	167837.61	59.4%	2991.98	—

Report of the Missionary Volunteer Department of the European Division for the Third Quarter 1927.

	Baltic Union	British Union	Bulg. Mission	Central Europ. Union	Czecho-slov. Un.	East German Union	Hungar. Union	Iberian Union	Jugosl. Mission	Latin Union	Polish Union	Ruman. Union	Russian Unions	Scand. Union	West German Union	Miss-ions	Tot. for the 3rd Qtr. 1927	Tot. for the 3rd Qtr. 1926
No. of Societies	80	62	2	116	25	378	25	6	4	58	25	93	—	55	286	12	1177	1096
Tot. M'bership of Soc.	624	1899	26	2136	379	4895	361	59	70	764	339	1656	1027	1348	3877	164	19124	19675
Members Reporting	287	286	16	885	119	2412	175	43	—	119	117	718	844	232	1599	49	7911	7444
Report of Miss. Work:																		
1. Miss. and Sick Vis.	1248	956	31	1560	892	7167	1313	716	—	1197	1267	5461	440	725	4961	68	28002	27964
2. Bible Readings	709	302	8	1309	1043	4098	2433	374	—	783	1871	8874	779	427	2245	232	25442	29843
3. Hours of Chr. H. W'k	345	7505	10	391	221	—	637	58	—	384	—	6724	—	151	—	827	16758	11279
4. Treatments Given	148	324	5	104	22	601	169	4	—	79	12	875	—	149	211	319	3022	1686
5. Subscr. to Period.	46	20	—	12	10	30	25	2	—	19	—	68	—	38	—	46	311	427
6. Pap. & Mag. Distr.	2516	11186	143	24212	2485	59287	704	447	—	3161	327	1095	—	13464	45694	210	169931	163244
7. Books Distributed	109	515	—	98	29	78	101	113	—	577	42	277	—	3742	51	26	5758	2296
8. Tracts Distributed	320	15842	—	269	63	499	243	2474	—	389	33	853	—	5693	113	121	26462	8359
9. Letters Written	251	623	9	351	155	387	355	48	—	241	27	330	94	245	445	17	4079	4481
01. Letters Received	119	351	1	152	89	408	175	33	—	199	16	178	76	115	222	17	2151	2438
11. SOULS WON	5	19	3	5	6	23	1	—	—	24	8	42	—	49	15	—	204	156

* No report.

(Continued from page 9.)

For the marriage service the bride should stand on the left hand of the bridegroom, as they face the minister.

Then the minister says:

Dearly beloved, we are gathered here in the sight of God, and in the presence of this company, to join together this man and this woman in the sacred estate of matrimony. In Eden this ordinance was instituted by the loving Creator, who saw that it was not good that man should be alone, and therefore made the woman to be a helpmeet for him. In God's design each new home is to be a place where the love and peace and purity of Eden

shall abide. To this end are the exhortations of Holy Scriptures:

"Wives, submit yourselves unto your own husbands, as unto the Lord. For the husband is the head of the wife, even as Christ is the head of the church: ... therefore as the church is subject unto Christ, so let the wives be to their own husbands in everything. Husbands, love your wives, even as Christ also loved the church, and gave Himself for it; that He might sanctify and cleanse it with the washing of water and by the word, that He might present it to Himself a glorious church, not having

spot, or wrinkle, or any such thing; but that it should be holy and without blemish. So ought men to love their wives as their own bodies. He that loveth his wife loveth himself. For no man ever yet hated his own flesh; but nourisheth and cherisheth it, even as the Lord the church: for we are members of His body, of His flesh, and of His bones. For this cause shall a man leave his father and mother, and shall be joined to his wife, and they two shall be one flesh." Eph. 5:22—31.

This institution of marriage Christ blessed and adorned by His presence at the marriage feast in Cana of Galilee, honouring it by the first miracle that He wrought. Marriage is further commended to us by the apostle Paul as worthy of all honour, each party to this solemn covenant being required of God to keep inviolate its sacred obligations so long as both shall live; and it is therefore not by any to be contemplated nor entered into unadvisedly or lightly, but reverently, soberly, and in the fear of God; duly considering that matrimony was divinely ordained for the mutual help and comfort that the one needs from the other and should receive, both in prosperity and adversity.

Into this holy estate these two persons here present come now to be joined. Therefore, if any man can show just cause why they may not lawfully be joined together, let him now speak, or else hereafter forever hold his peace.

If no objection is offered, the minister shall address the bride and bridegroom:

I require and charge you both, as ye shall answer in the day of judgment, when the secrets of all hearts shall be disclosed, that if either of you knows any cause or impediment why ye may not be lawfully joined together in matrimony, ye do now confess it; for be ye well assured that any who be coupled together otherwise than as God's Word doth allow, are not joined together by God; neither is their marriage lawful.

If circumstances make it desirable, the minister then asks:

Who giveth this woman to be married to this man?

The father or other friend will signify his assent, saying, "I do."

The bridegroom and bride shall then clasp their right hands, while the marriage declarations are made.

The minister asks the bridegroom:

And now, solemnly promising before God, and in the presence of these witnesses, wilt thou, — (full name), have this woman, — (full name), to be thy wedded wife, to live together after God's ordinance in the sacred estate of matrimony? Wilt thou love her, comfort her, honour her, cherish her, in sickness and in health, in prosperity or adversity; and, forsaking all other, keep thee only unto her so long as ye both shall live? Do you so declare?

The bridegroom answers:

I do.

Then the minister asks the bride:

Wilt thou, — (full name), have this man, — (full name), to be thy wedded husband, to live together after God's ordinance in the sacred estate of matrimony? Wilt thou love, honour, and cherish him, in sickness and in health, in prosperity or adversity; and, forsaking all other, keep thee only unto him, so long as ye both shall live? Do you so declare?

The bride answers:

I do.

Then the minister says, putting his hand on the joined hands of the man and woman:

Forasmuch as — (full name) and — (full name) have consented together in holy wedlock, and have witnessed the same before God and this company, and thereto have given and pledged their troth, each to the other, and have declared the same by joining hands, I, as a minister of the gospel and by authority of the law of —, do pronounce that they are husband and wife. What God hath joined together let no man put asunder. Amen.

The bride and bridegroom, unclasping hands, kneel or stand with bowed heads while a benediction is spoken:

The Lord bless you, and keep you; the Lord make His face to shine upon you, and be gracious unto you. The Lord lift up His countenance upon you, and give you peace, now and evermore. Amen.

It is generally fitting for the minister now to introduce the newly wedded pair to those assembled, to receive the greetings of friends.

Before leaving the place of the ceremony, the signatures of bride and groom and the officiating minister, or any witnesses should be affixed to any necessary papers as required by local civil regulations.)

"Manual for Ministers", pp. 16—26.

Miscellaneous.

For some time several of our brethren in Italy have experienced great difficulty in securing a passport to travel abroad. A brother who was under appointment to the Foreign Missions has now finally succeeded after two years. Another brother who holds an official position in our administrative work in Italy had been refused a passport several times to attend certain conventions that were held abroad. We have learned of the rather interesting way in which he succeeded to persuade the authorities in connection with a Publishers' Convention recently held in France.

After a number of futile endeavours in which it was argued that, as he was coming from former Austrian territory, his whole history would first have to be carefully looked into and proved at hand of various documents difficult to be obtained. As a final effort, shortly before his last opportunity of departing for the meeting, he again appealed to the respective officials, and when he was about to fail, he was impressed to read to these gentlemen the 13th chapter of Romans, emphasizing that he

believed just what the apostle here said, we should be loyal citizens and subject to the powers that be. He assured them that also during his stay abroad, he would do nothing that was contrary to the principles herein outlined. This rather unique way of arguing made such an impression on the superior official that he gave instructions to issue a passport to our brother immediately, though the discussion had detained them long after office hours in the evening.

Writing from Tokyo, Japan, Brother A. Koch reports that a physician and his wife, who was formerly in imperial service, was among those recently baptized, and that he was one of the most enthusiastic church members. The comparatively small membership of 502 in Japan has succeeded in raising some \$ 44,000.— in tithes and offerings, etc. during the last two years. This certainly is a striking illustration of what some of these foreign fields are doing towards meeting their operating cost.

Brother K. Kaltenhäuser of Brusque, St. Catharina, reports that he himself had collected about \$ 375.— during the Harvest Ingathering Campaign in the small district assigned to him and this in spite of the hard times of which everybody was complaining.

In the little church school they are operating near-by, they have children of Catholic and Protestant parentage, and it is of interest to note that they prefer to stay with us though a small tuition fee is charged, when it was contemplated to open up a government school in this district. This is a good recommendation for the influence that is being exercised.

In a recent letter Brother Fanselau who was sent out from Germany to Honduras writes that among the company received into church fellowship on their recent missionary tour with Brother Lorntz, the superintendent of the mission, there was also a former general who made the covenant.

In a letter from Elder John Isaac, President of the Polish Union, he refers to peculiar difficulties they are having to meet in connexion with their Harvest Ingathering work. A very strong counter-propaganda has been started by the state church both from the pulpit and by the press. Their Harvest Ingathering paper has been fully described as to its appearance and contents, naming also the editor. The purchase of the paper is forbidden. This is an illustration of how the work must be carried on in some of our fields.

The Italian "Tribuna" in a recent issue strongly opposes the establishment of Protestant Educational Institutions in the city of Rome, for the Eternal City, and all Italy were Catholic, and should remain so. Every attempt at reforming would be madness and an insult to the nation in its religious unity. It was regretted that there are still Protestants who ignor this fact and continue their propaganda. The paper goes on to say, that just recently a building has been purchased near the Piazza Barberini, for the purpose of establishing a Protestant Educational Institution. The government, they say, should not tolerate such a form of propaganda. Another paper entitled "Italia" even attacks the work done by the British Bible Society in the province.

According to the 1920 census report, there are over eight million people in North America who speak the German language. The Home Missionary Department of the General Conference has been requested to make a special effort during January 1928 on behalf of German readers, by promoting the circulation of the paper "Der Hausfreund".

From the notes accompanying the Financial Statement of the denomination for the year 1925 prepared by H. E. Rogers, Statistical Secretary, we cull the following interesting items:

"The total income of all the organizations during 1925 was \$ 36,865,275.14, or \$ 70.14 for every minute during the entire year. The expenditure was \$ 35,407,044.97, or \$ 67.36 per minute, leaving as the net gain, \$ 1,458,230.17, or \$ 2.78 per minute. Average per capita income during 1925 \$ 146.88.

The resources of the 705 organizations stand at \$ 37,600,774.93, and including the value of the 2,277 church buildings, and the equipment of the 1,413 church schools, the total denominational investment stands at \$ 45,648,299.24, or \$ 181.87 for each of the 250,988 members throughout the world. Of the total investment 63.38 per cent is invested in North America, and 36.62 per cent outside this country; while North America has 43.35 per cent of the total membership, and outside this country there is 56.65 per cent of total members throughout the world. Ten years ago the denominational investment was \$ 14,254,615.45, the ten-year increase being \$ 31,393,683.79, or 220.24 per cent. During the same term the membership has increased 83.36 per cent. ... The total ten-year income amounts to \$ 244,812,360.47, and the expenditures \$ 228,887,419.58, leaving as net gain for the ten-year term \$ 15,924,940.89, the per cent of increase to total income being 6.50; that is, of every \$ 100 received, \$ 93.50 was expended, leaving \$ 6.50 to increase present worth."

We see from reports of the General Conference Sabbath School Department for 1926 that the world field had 8277 Sabbath schools with a membership of 311,476, while the total donations amounted to \$ 1,787,034.05, which is \$ 112,587.65 above 1925. The corresponding figures for the first quarter of 1927 are 8344 schools with a membership of 315,755, while the gifts for the first quarter amounted to \$ 424,644.—, of which \$ 111,498.71 are offerings given on the 13th Sabbath, which is more than one fourth of the total gifts.

Brother C. Jensen who proceeded from Denmark to India two years ago, writes that they are making good progress in their work. While in the initial stage the health of Mrs. Jensen was rather frail, they were glad to report that she now is in a very good state. Being a qualified nurse from the Skodsborg Sanitarium she is devoting part of her time to the treatment of varied diseases, besides caring for the girls' school. Brother Jensen says: "I do not think that anybody should be sent to the mission fields before he has had at least some medical training." He greatly deplores this lack in his own preparation for service, but appreciates the fact that this is made good by his companion.

Brother Jensen has very successfully passed the two years' language course in the Hindi, and has begun to preach in this native tongue. When writing he had just started touring the near-by Hindu and Mohammedan villages with one of our Indian workers.

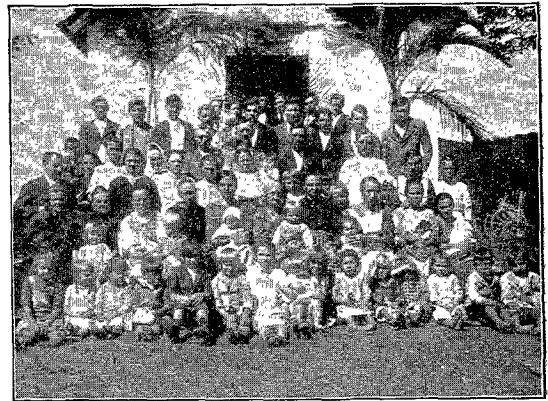
In a report received from A. Minck, President of the Hungarian Union, he refers to some of the difficulties they have to meet in the field in the following words: —

"Not only does the circulation of our literature by our colporteurs and the missionary work of our church members meet with opposition, also the preaching of the message by our ministry is greatly handicapped by measures of the authorities. With but rare exceptions we are permitted to hold public meetings and religious services only in places of worship owned by our people or dedicated to this purpose. At 15 different places in our Union the meetings of our churches are forbidden wholly or in part, or at least greatly restricted. Even in our own chapel at Miskolc meetings are prohibited and only one Sabbath meeting is allowed fortnightly by special permission of the Minister of the Interior."

In a recent letter dated November 10, Brother Minck further states that according to word received from Bro. L., district superintendent in eastern Hungary, there are but three or four places where he can move about with some amount of liberty,

while at all other places, which are enumerated, our church meetings are forbidden. He then quotes him as follows: "In F. our brethren had to meet at an isolated out-of-the-way farm, where in all haste I had to administer the ordinances of the Lord. The gendarmes are everywhere on our heels. At N. I had to visit our people during the night, for it is dangerous to visit these places in daytime. Some of our people came to see me in the neighbourhood the day before cautioning me to be very careful in making this visit."

Brother Minck adds that, though similar conditions obtain in other parts of the country, the workers were not discouraged and the work was nevertheless onward.



A group of German church members at Lageado, Brazil. Elder Kaltenhäuser standing in the middle row at the left.

In another letter Brother Kaltenhäuser who, it will be remembered, left Germany for Brazil February 1924, passes on to us a rather interesting note on the dedication service, August 14, 1927, of a meeting hall at Lageado, some hours distant from Brusque. We here give a few data on the history connected with this place:

In 1869 a certain August Fuckner emigrated with his family from Oberhausen in Germany to Brazil, where at Lageado, near Brusque, in the state of Sa. Catharina, he purchased a whole colony of some hundred acres for the price of 187 Milreis which, at present, would represent about \$ 22.—, which he gradually paid off. He had the good luck of securing an abandoned colony where two bachelors, each of whom owned fifty acres, had done some pioneer work of which Fuckner could reap an early harvest. His two sons, Robert and Reinhold, who were of the age of seven and seventeen respectively at the time of emigration, later married and with their numerous

family accepted the Advent message in 1910. Brother Fuckner died in 1925 when his son Oswald was elected leader of the company. As it had long proved rather inconvenient for them to attend the services at Brusque, a little church building has now been erected on their property at his initiative and mainly with the help of the other brethren. Thus another memorial has been established and, it may be noted, on the same spot where one of the earlier settlers had pitched his little hut of palm leaves. At the same time this building will also serve as a church school for the considerable company of children of their own as well as of neighbouring families.

According to a letter received from Elder Nils Zerne, director of the Syrian Mission, a number of candidates were awaiting baptism. Brother Zerne further says: "There is every reason to be hopeful for a good addition to our membership this year for God is blessing the efforts of our workers, who are all of good courage."

We were glad to learn that M. Couperus and Klaas Tilstra both with their companions have passed through Holland, their native country, visiting their parents en route to the Malaysian Union Mission to which they have been appointed for missionary work by the General Conference. These two brethren had graduated from our Neandertal seminary a few years ago and then proceeded to America for post-graduate work at Emmanuel Missionary College, Berrien Springs, from which we understand they have also graduated. Both have married before their departure from the States and it is of interest that Mrs. Tilstra is a daughter of Elder R. G. Klingbeil who has spent many years of faithful service in our work in Holland and later also in Belgium. We are certainly pleased that Holland can thus supply two additional promising young workers, who still retain their Dutch citizenship, to the mission work in the large Netherlands colony in Malaysia, after they have received the finishing touch in their preparation in the States. We wish them God-speed as they take up their evangelistic work which, we are sure, will add to the missionary inspiration in the home field.

As this "Quarterly" goes to the press the Division Committee is meeting in its Winter Council at Vienna, Austria, November 22—30. This is rather earlier than in previous years which renders it more convenient for the unions and mission fields to adjust their work in harmony with budget appropriations settled at this meeting.

F. Kessel, president of the Transylvanian Conference in Rumania, reports of a most encouraging general young people's meeting they have had, November 11—13 at Diciosanmartin, their training school. Some three hundred had come partly in auto trucks from a number of places, chiefly those who had not received the notice calling off the rally at the last moment. This was a rather unique experience for Diciosanmartin, but all proceeded in such a good order that an excellent impression has been made on the public. Never before have so many of our young people in that country met at one place. They brought blankets, pillows, linen and other material as special gifts for the school. Five thousand lei was given in cash and twelve thousand in pledges and a wonderful spirit of enthusiasm prevailed that will mean much for the school. Never before, says Brother Kessel, did they have such a "feast" of their young people and Brother Gaede, the school principal, may well be delighted at the prospects of future developments.

Our Statistical Report.

The recapitulation table of the different reports reveals anew the fact that the work of God cannot come to a stand-still. 2740 souls have been added to the church, which is more than in either of the two previous quarters of the year. Our net gain amounts to 1429 — almost as much as that of the first half of this year and 49 more than in the corresponding quarter of 1926. Decided progress is shown in the mission field. In

Kenya and Mwanza	43	souls	have	been	baptized,
in Nigeria	45	"	"	"	"
in Ruanda	22	"	"	"	"
in Iceland	25	"	"	"	"
in Persia	8	"	"	"	"

Our membership now stands at 87,248.

As to finances, the recapitulation shows not only an increase in the total tithe, but also in the per capita rate.

The third quarter of the year is truly the harvest quarter for souls and for offerings. For offerings particularly, because the Harvest Ingathering campaign falls in this period.

While the weekly per capita for the first and second quarters was only 7 cents, thanks to the Harvest Ingathering it is, in this quarter, raised to 15 cents — the same as for the third quarter of last year. A fuller comparison will be made next quarter when the final figures from the fields are in.

We have to give the banner to the Sabbath School Department for having passed its goal of 100,000 members (102,079). E. Borm.